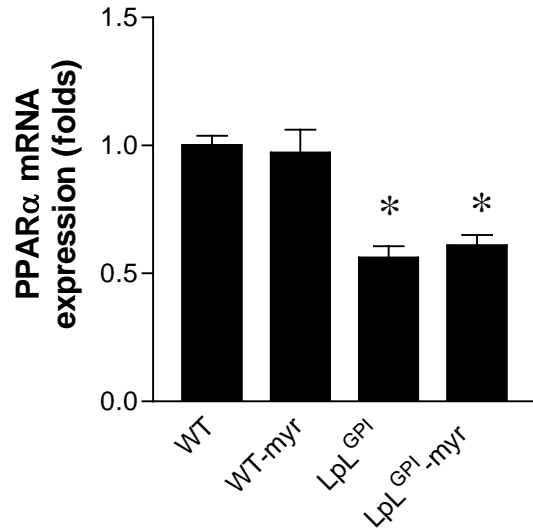
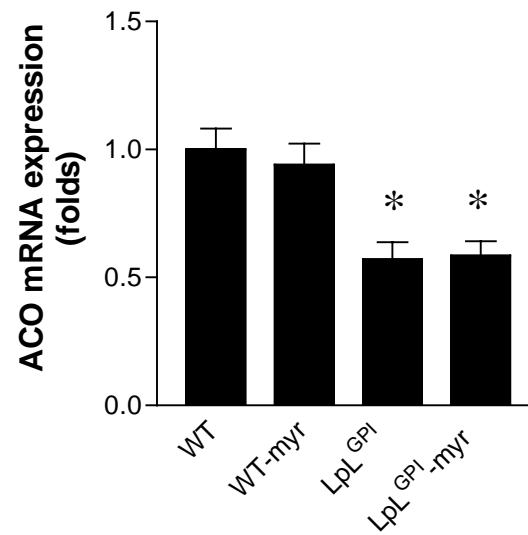


Supplemental Figure 1

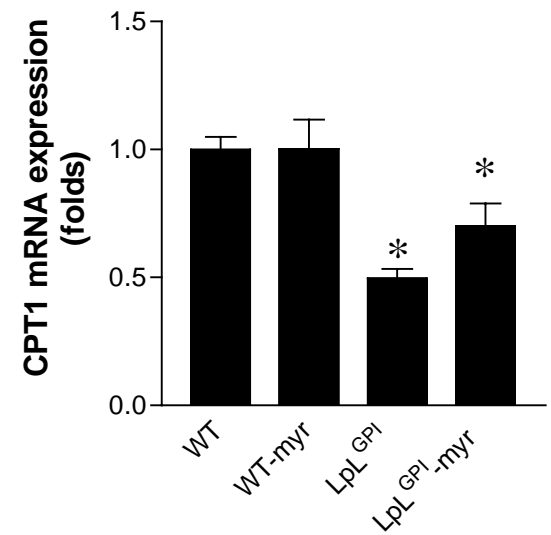
A



B

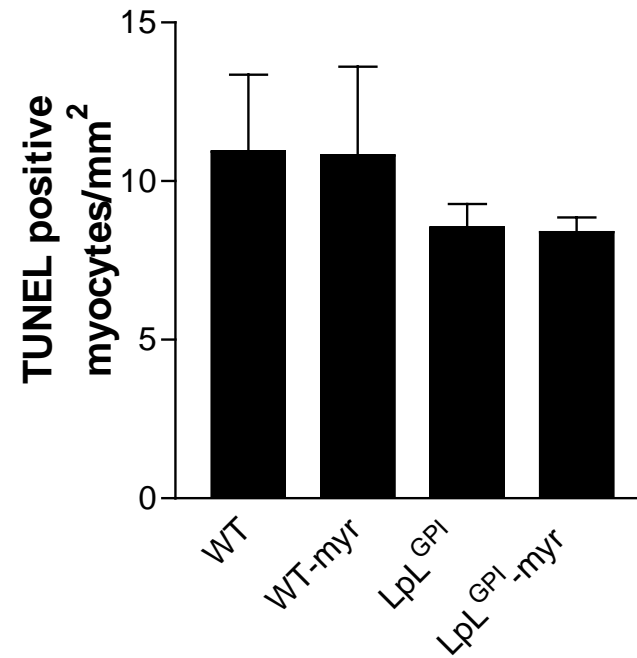


C



mRNA expression of PPAR α , ACO, and CPT1 in the heart was measured by RT-PCR as described in *Experiment Procedures*. n=5-6. Mean \pm SEM. * p <0.05 vs WT.

Supplemental Figure 2



Sectioned heart tissues were stained for DNA fragmentation by a TUNEL staining. n=3. Mean \pm SEM.

Supplemental Table 1. Primers for RT-PCR used in the Study

Gene	Direction	Sequence
GLUT1	sense	5'-TCGTAACGAGGAGAACCG-3'
	anti-sense	5'-GGCCGTGTTGACGATA-3'
GLUT4	sense	5'-AGAGTCTAAAGCGCCT-3'
	anti-sense	5'-CCGAGACCAACGTGAA-3'
PDK4	sense	5'-GACCGCTTAGTGAACAC-3'
	antisense	5'-GTAACGGGGTCCACTG-3'
ANF	sense	5'-CTTGTGGTGTGTACAG-3'
	antisense	5'-CCTTGGTGCTGAAGTT-3'
BNP	sense	5'-ATGCTACCCTTAGAGGC-3'
	antisense	5'-GTAAAGTGGGTTGGGC-3'
β -actin	sense	5'-GACGTTGACATCCGTAAAG-3'
	antisense	5'-CAGTAACAGTCCGCCT-3'
CD-36	sense	5'-ATTGGTCAAGCCAGCT-3'
	antisense	5'-TGTAGGCTCATCCACTAC-3'
ACS1	sense	5'-CTACGGACAGACCGAG-3'
	antisense	5'-GTCCCCCGTGTGTAAC-3'
FATP1	sense	5'-GGTCGTTTCTCCATTAATTCTCAT-3'
	antisense	5'-CTAGAACTTTCCAGAAATGTTCC-3'
LCB1	sense	5'-AGTGGTGGGAGAGTCCCTTT-3'
	antisense	5'-CAGTGACCACAACCCTGATG-3'
LCB2	sense	5'-GGATACATCGGAGGCAAGAA-3'
	antisense	5'-ACCTGGTGTTCTCAGCCAAC-3'