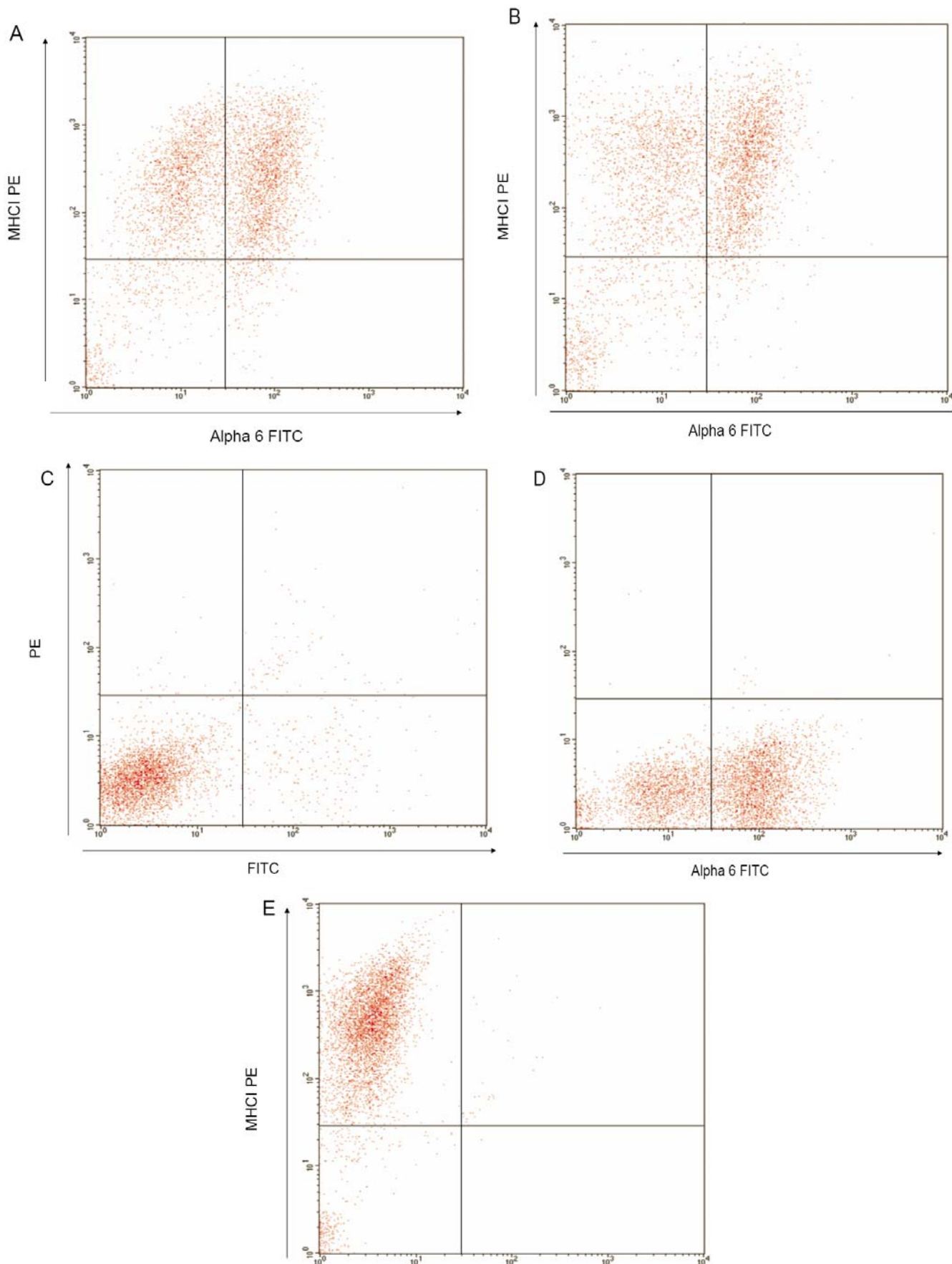


Flow cytometry data of sorted cells that donated RNA for microarray experiments.



Gates in A & B were set using isotype control and single color positive controls (C-E). (A) Figure showing flow cytometry analysis of the expression of MHC I and $\alpha 6$ integrin on keratinocytes sorted by FACS and used in the first microarray. (B) Figure showing flow cytometry analysis of the expression of MHC I and $\alpha 6$ integrin on keratinocytes sorted by FACS and used in the second microarray. Cells in the lower right quadrant are $\alpha 6^+/\text{MHC I}^-$. Cells in the upper right quadrant are $\alpha 6^+/\text{MHC I}^+$. (C) Representative isotype control. (D) Representative single color positive control for FITC. (E) Representative single color positive control for PE.