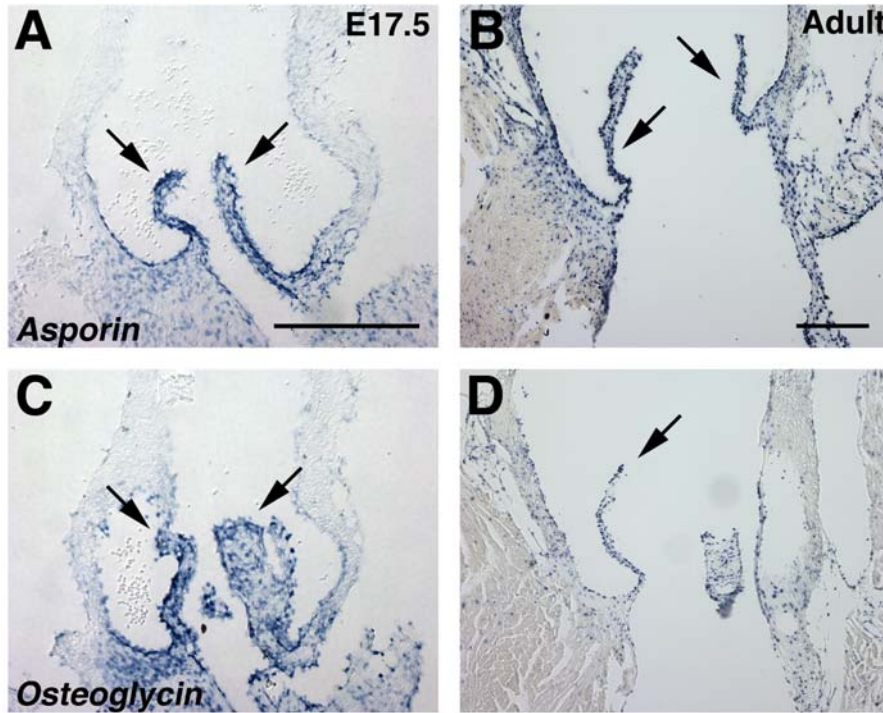
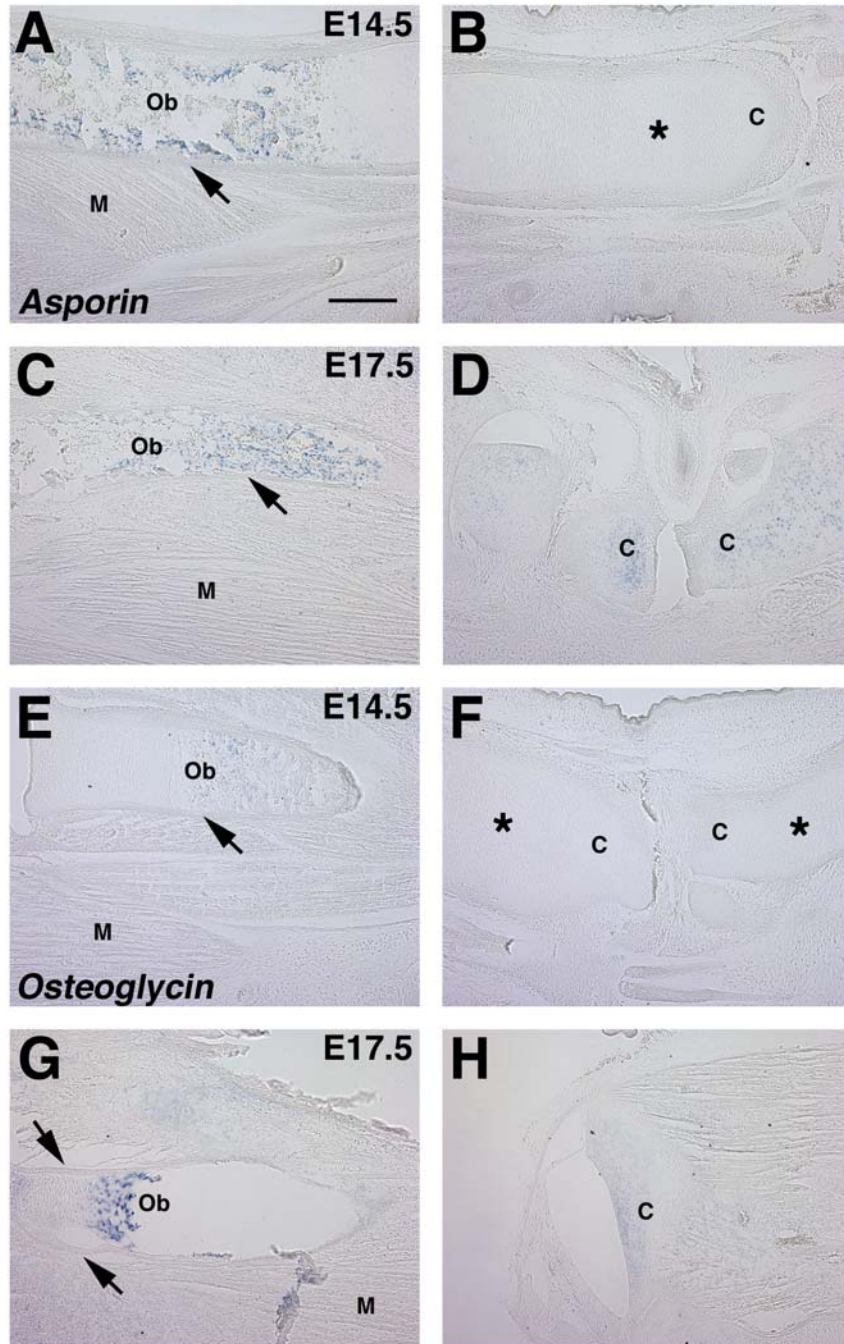


Supplemental Figure 1 PG-090212-2008R2



Supplemental Figure 1: Expression of mouse *Asporin* and *Osteoglycin* in embryonic and adult aortic valves. *In situ* hybridization on 14 μ m paraffin sections of embryonic day (E) 17.5 and adult mouse hearts using probes specific for *Aspn* (A and B) and *Ogn* (C and D). Strong expression of *Aspn* (A and B) and *Ogn* (C and D) are demonstrated in late embryonic (E17.5) and adult aortic valve leaflets (as indicated by arrows in A, B, C and D). Scale bars represent 200 nm.

Supplemental Figure 2



Supplemental Figure 2: Expression of mouse *Asporin* and *Osteoglycin* in developing cartilage and bone. *In situ* hybridization on 14µm paraffin sections of embryonic day (E) 14.5 and E17.5 mouse limbs with probes specific for *Aspn* (A-D) and *Ogn* (E-H). Expression of *Aspn* and *Ogn* is apparent in E14.5 (A, E) and E17.5 (C, G) osteoblasts (Ob), but no expression was detected in mineralized bone of the periosteum (arrows). Expression was detected in differentiated articular cartilage (labeled as C) in (D, H) at E17.5 but was not apparent in hypertrophic chondrocytes (indicated by *) or in E14.5 cartilage progenitors (B, F). Relatively little expression was observed in E14.5 or E17.5 skeletal muscle (labeled as M). Scale bar represents 200µm.