

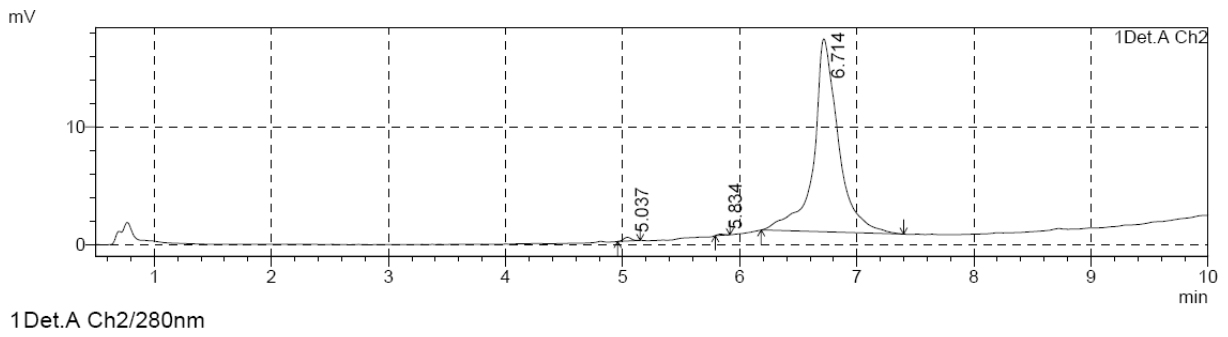
Supplementary Data

The agonist-antagonist dilemma in molecular imaging: Evaluation of a monomolecular multimodal imaging agent for the somatostatin receptor

W. Barry Edwards, Baogang Xu, Walter Akers, Phillip P. Cheney, Kexian Liang, Buck E. Rogers, Carolyn J. Anderson, Samuel Achilefu[†]

Table of contents

Figure 1 RP-HPLC LS172.....	2
Figure 2 ES/MS LS172	3
Figure 3 Radiochromatogram of ⁶⁴ Cu-LS172	4
Figure 4 Radiochromatogram of ¹⁷⁷ Lu-LS172	5
Figure 5 RP-HPLC ^{nat} Cu-LS172.....	6
Figure 6 ESMS ^{nat} Cu-LS172.....	6
Figure 7RP-HPLC ^{nat} Lu-LS172.....	7
Figure 8 ESMS ^{nat} Lu-LS172.....	7



PeakTable

Detector A Ch2 280nm

Peak#	Ret. Time	Area	Height	Area %	Height %
1	5.037	1450	317	0.595	1.888
2	5.834	363	97	0.149	0.577
3	6.714	241949	16396	99.256	97.534
Total		243762	16811	100.000	100.000

Figure 1 RP-HPLC LS172

Ret. Time: 6.717(Scan#:747)

BG Mode: ?

Mass Peaks: 1128 Base Peak: 723.70(138166) Polarity: Pos Segment1 - Event1

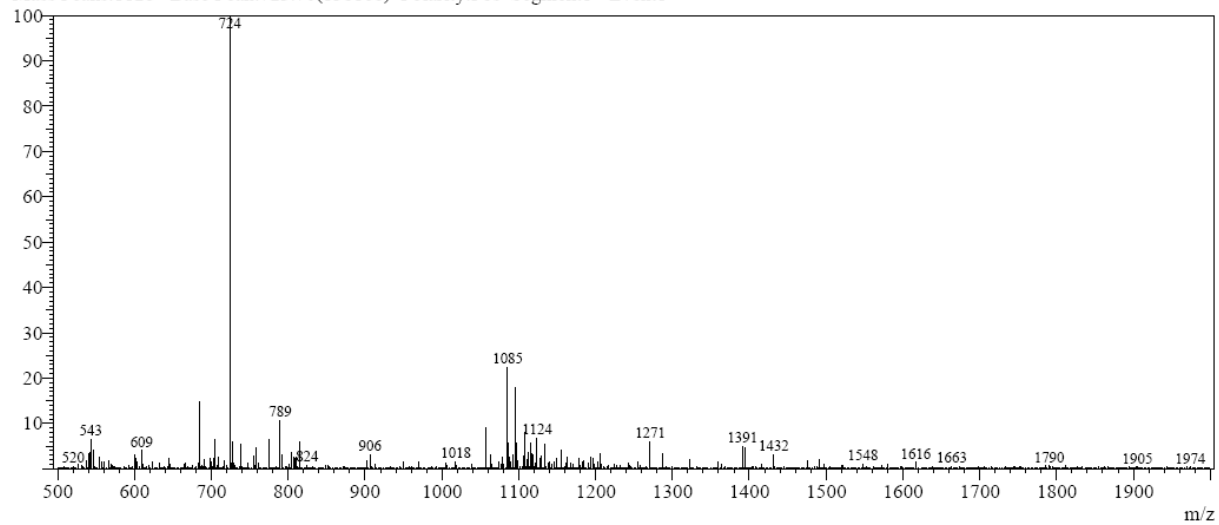


Figure 2 ES/MS LS172

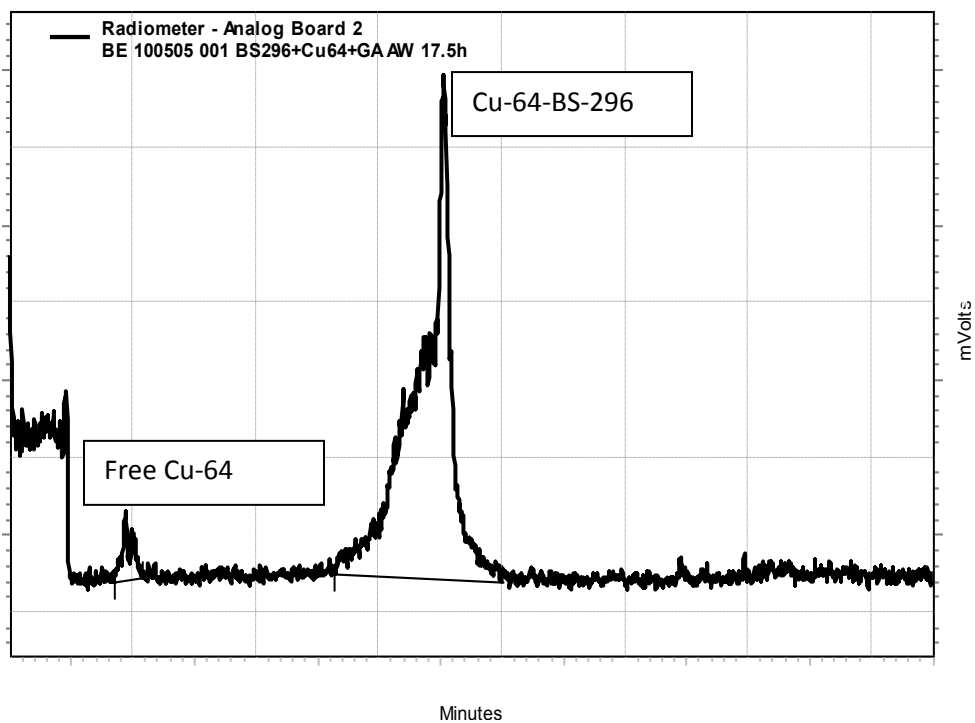


Figure 3 Radiochromatogram of ^{64}Cu -LS172

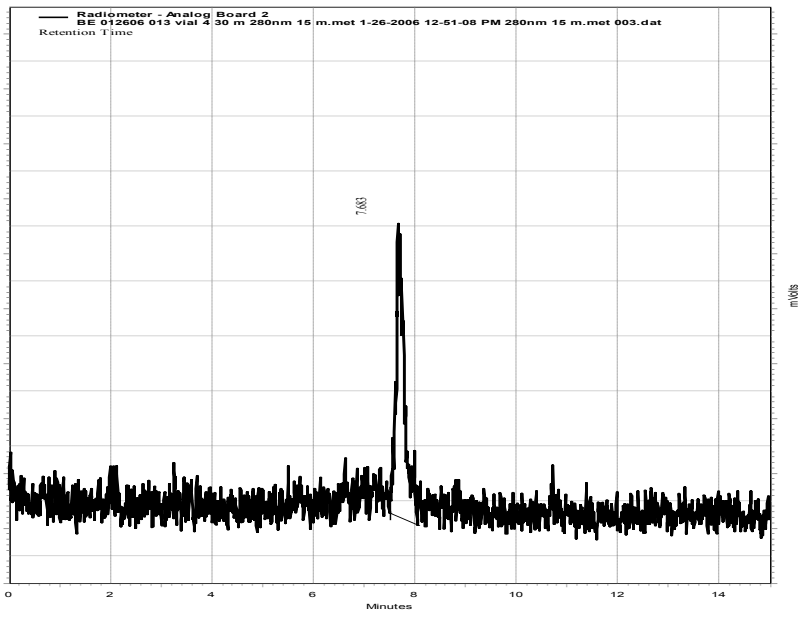
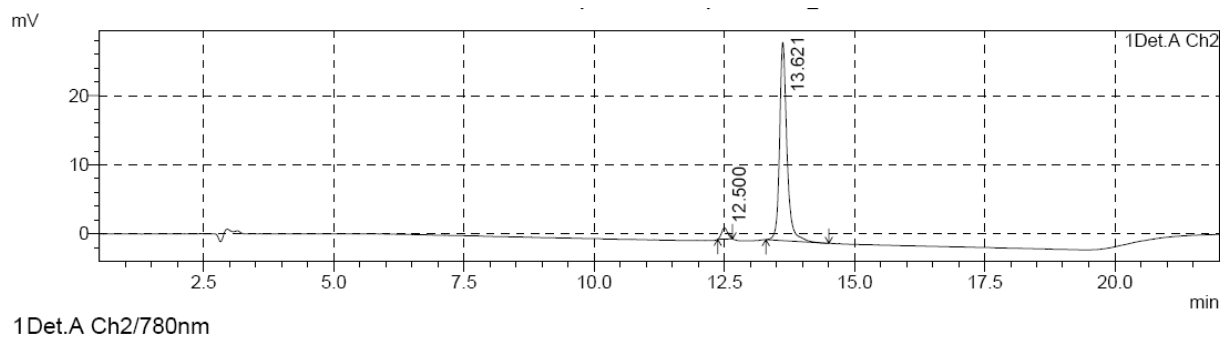


Figure 4 Radiochromatogram of ^{177}Lu -LS172



PeakTable

UV-Vis detector Ch2 780nm

Peak#	Ret. Time	Area	Height	Area %	Height %
1	12.500	13051	1614	4.435	5.330
2	13.621	281244	28661	95.565	94.670
Total		294296	30275	100.000	100.000

Figure 5 RP-HPLC ^{nat}Cu-LS172

Ret.Time:13.633(Scan#:1577)
 BG Mode:?
 Mass Peaks:18 Base Peak:554.00(7522) Polarity:Pos Segment1 - Event1

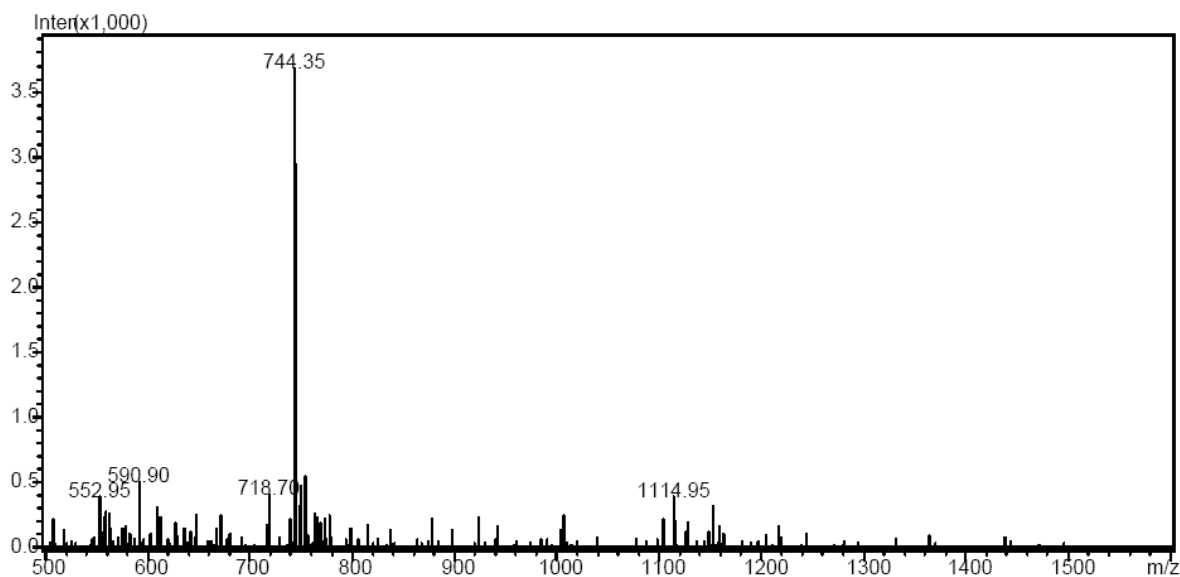
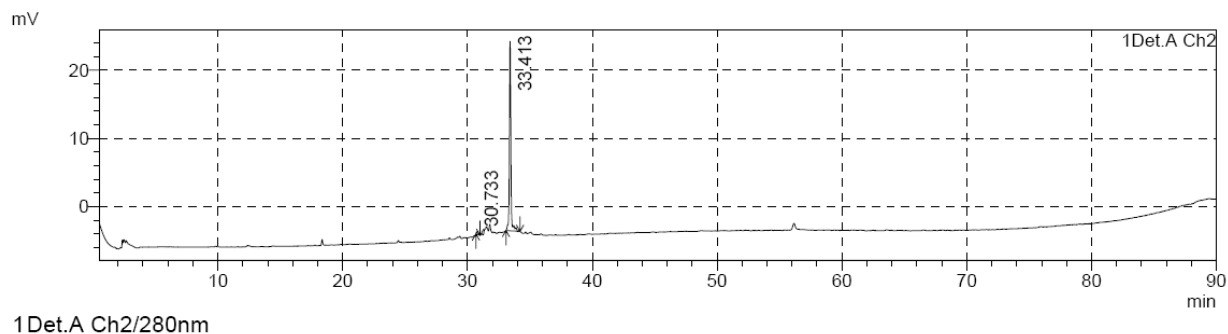


Figure 6 ESMS ^{nat}Cu-LS172



PeakTable

UV-Vis detector Ch2 280nm

Peak#	Ret. Time	Area	Height	Area %	Height %
1	30.733	3462	348	1.500	1.241
2	33.413	227320	27724	98.500	98.759
Total		230781	28073	100.000	100.000

Figure 7 RP-HPLC ^{nat}Lu-LS172

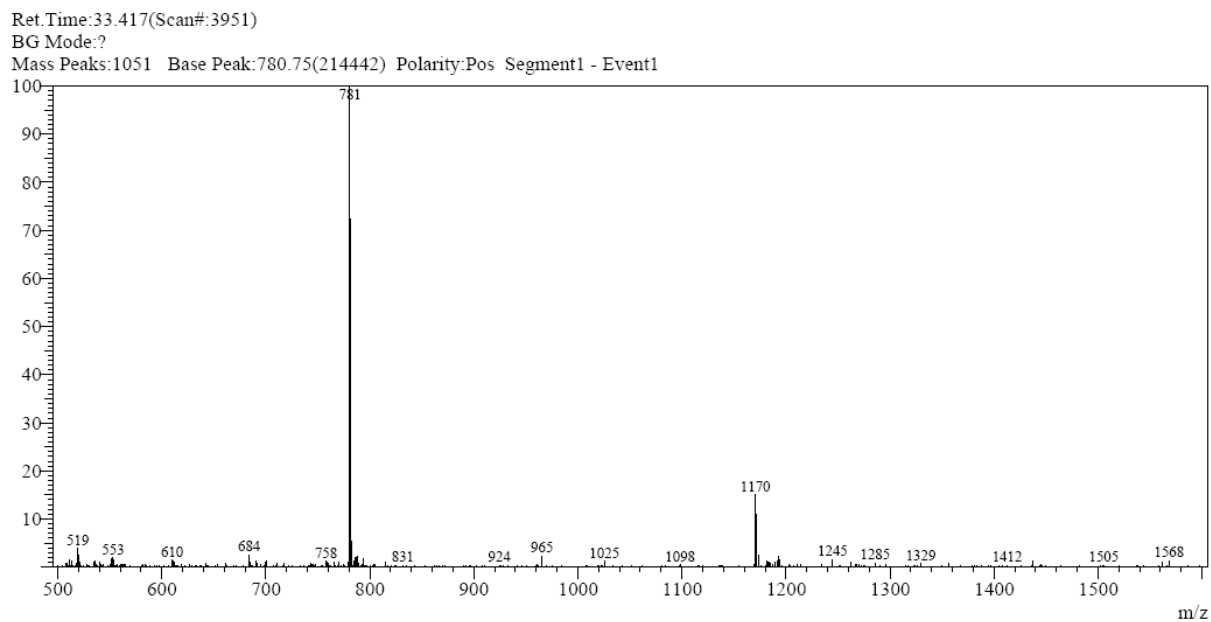


Figure 8 ESMS ^{nat}Lu-LS172