

Current Data Parameters
 NAME Ph-3-HAO
 EXPNO 1
 PROCNO 1

F2 - Acquisition Parameters
 Date_ 20050524
 Time 20.49
 INSTRUM spect
 PROBHD 5 mm GNP 1H
 PULPROG zg
 TD 16384
 SOLVENT CDCl3
 NS 16
 DS 0
 SMH 7183.908 Hz
 FIDRES 0.438471 Hz
 AQ 1.1403764 sec
 RG 228.1
 DW 69.600 usec
 DE 6.00 usec
 TE 300.0 K
 D1 2.0000000 sec

===== CHANNEL f1 =====
 NUC1 1H
 P1 10.50 usec
 PL1 0.00 dB
 SF01 400.1328009 MHz

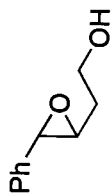
F2 - Processing parameters
 SI 32768
 SF 400.1300100 MHz
 WDW EM
 SSB 0
 LB 0.30 Hz
 GB 0
 PC 1.00
 1D NMR plot parameters
 CX 20.00 cm
 FJP 8.000 ppm
 F1 3201.04 Hz
 F2P 0.000 ppm
 F2 0.00 Hz
 PPMCM 0.40000 ppm/cm
 HZCM 160.05200 Hz/cm

1.61486
 1.79811
 1.88292
 1.89803

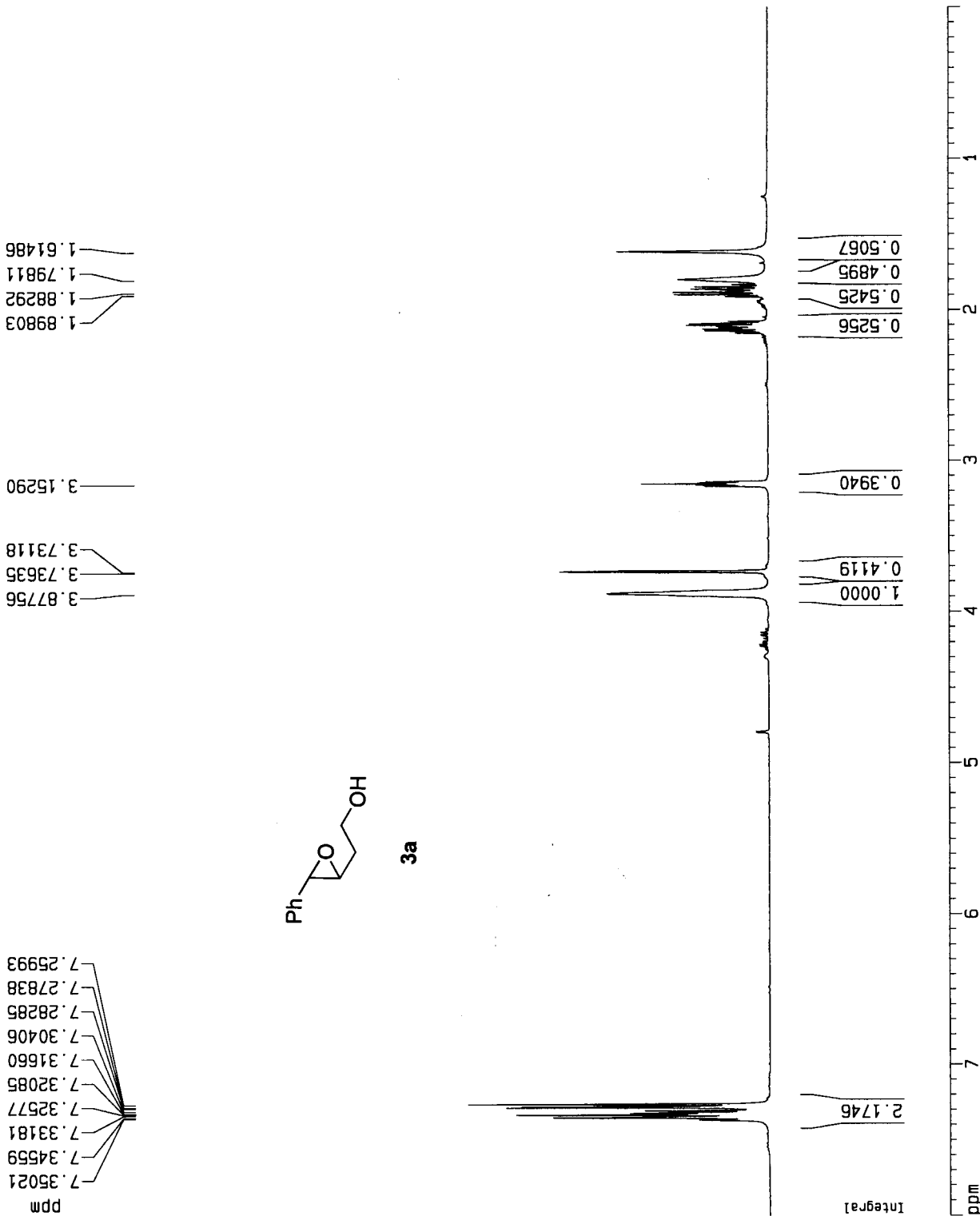
3.15290

3.73118
 3.73635
 3.87756

7.25993
 7.27838
 7.28285
 7.30406
 7.31660
 7.32085
 7.32577
 7.33181
 7.34559
 7.35021



3a



Current Data Parameters

NAME asdfg
EXPNO 1
PROCNO 1

F2 - Acquisition Parameters

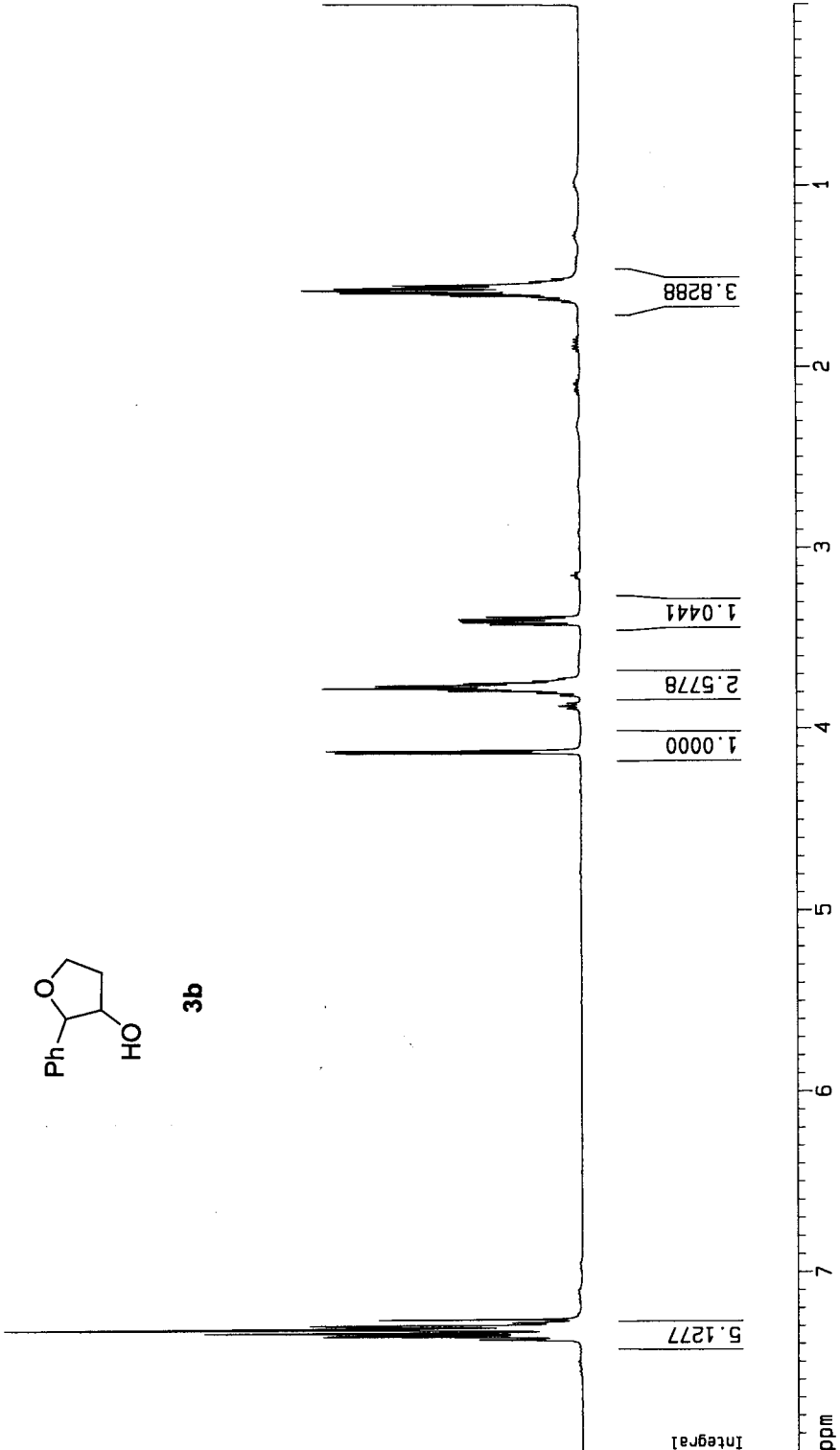
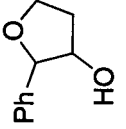
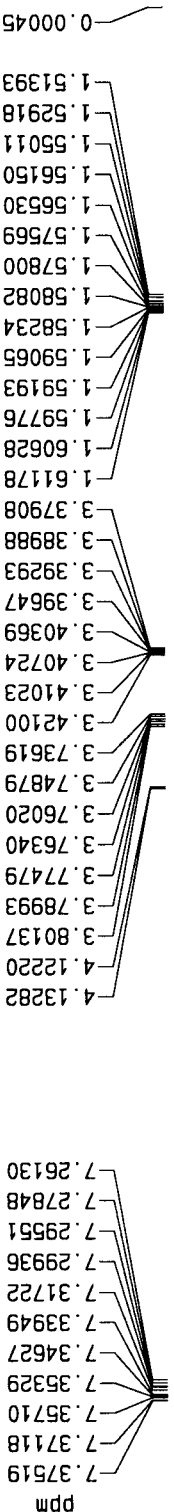
Date_ 20060227
Time 21.47
INSTRUM spect
PROBHD 5 mm Multinu
PULPROG zg
TD 22320
SOLVENT CDCl3
NS 10
DS 0
SWH 5580.357 Hz
FIDRES 0.250016 Hz
AQ 1.9999220 sec
RG 256
DM 89.600 usec
DE 7.00 usec
TE 300.0 K
D1 1.0000000 sec
P1 8.50 usec
SFO1 400.1320007 MHz
NUC1 1H
PL1 -6.00 dB

F2 - Processing parameters

SI 32768
SF 400.1300083 MHz
WDW EM
SSB 0
LB 0.30 Hz
GB 0
PC 1.00

1D NMR plot parameters

CX 20.00 cm
F1P 8.000 ppm
F1 3201.04 Hz
F2P 0.000 ppm
F2 0.00 Hz
PPMCM 0.40000 ppm/cm
HZCM 160.05200 Hz/cm

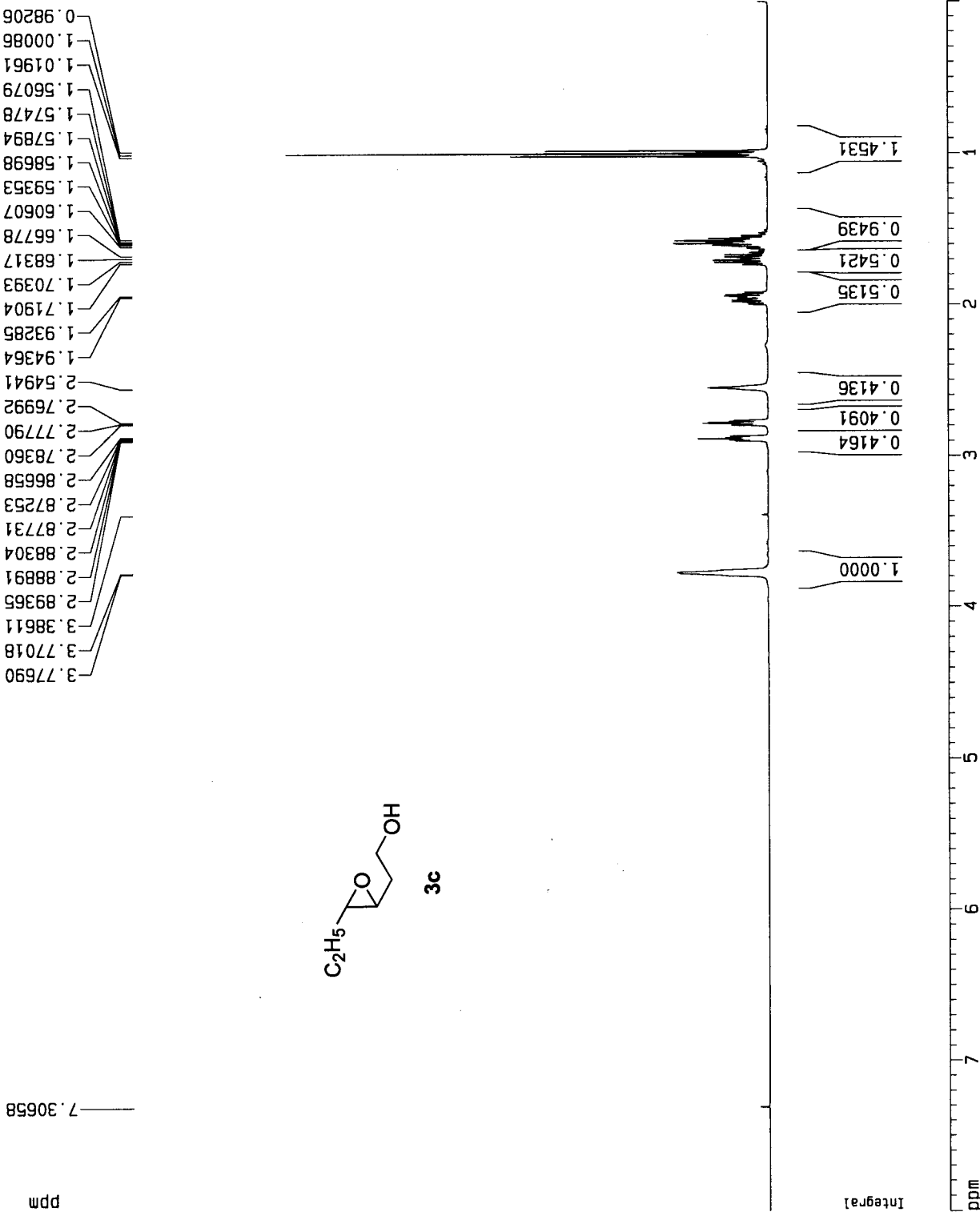


Current Data Parameters
 NAME ZX-trans-Et
 EXPNO 1
 PROCNO 1

F2 - Acquisition Parameters
 Date_ 20061129
 Time 21.23
 INSTRUM spect
 PROBHD 5 mm GNP 1H
 PULPROG zg
 TD 16384
 SOLVENT CDCl3
 NS 16
 DS 0
 SMH 4807.692 Hz
 FIDRES 0.293438 Hz
 AQ 1.7039860 sec
 RG 20.2
 DW 104.000 usec
 DE 6.00 usec
 TE 300.0 K
 D1 2.00000000 sec

===== CHANNEL f1 =====
 NUC1 1H
 P1 10.50 usec
 PL1 0.00 dB
 SF01 400.1320007 MHz

F2 - Processing parameters
 SI 32768
 SF 400.1299900 MHz
 WDW EM
 SSB 0
 LB 0.30 Hz
 GB 0
 PC 1.00
 1D NMR plot parameters
 CX 20.00 cm
 F1P 8.000 ppm
 F1 3201.04 Hz
 F2P 0.000 ppm
 F2 0.00 Hz
 PPMCM 0.40000 ppm/cm
 HZCM 160.05200 Hz/cm



Current Data Parameters
 NAME trans-9-HAO
 EXPNO 1
 PROCNO 1

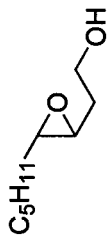
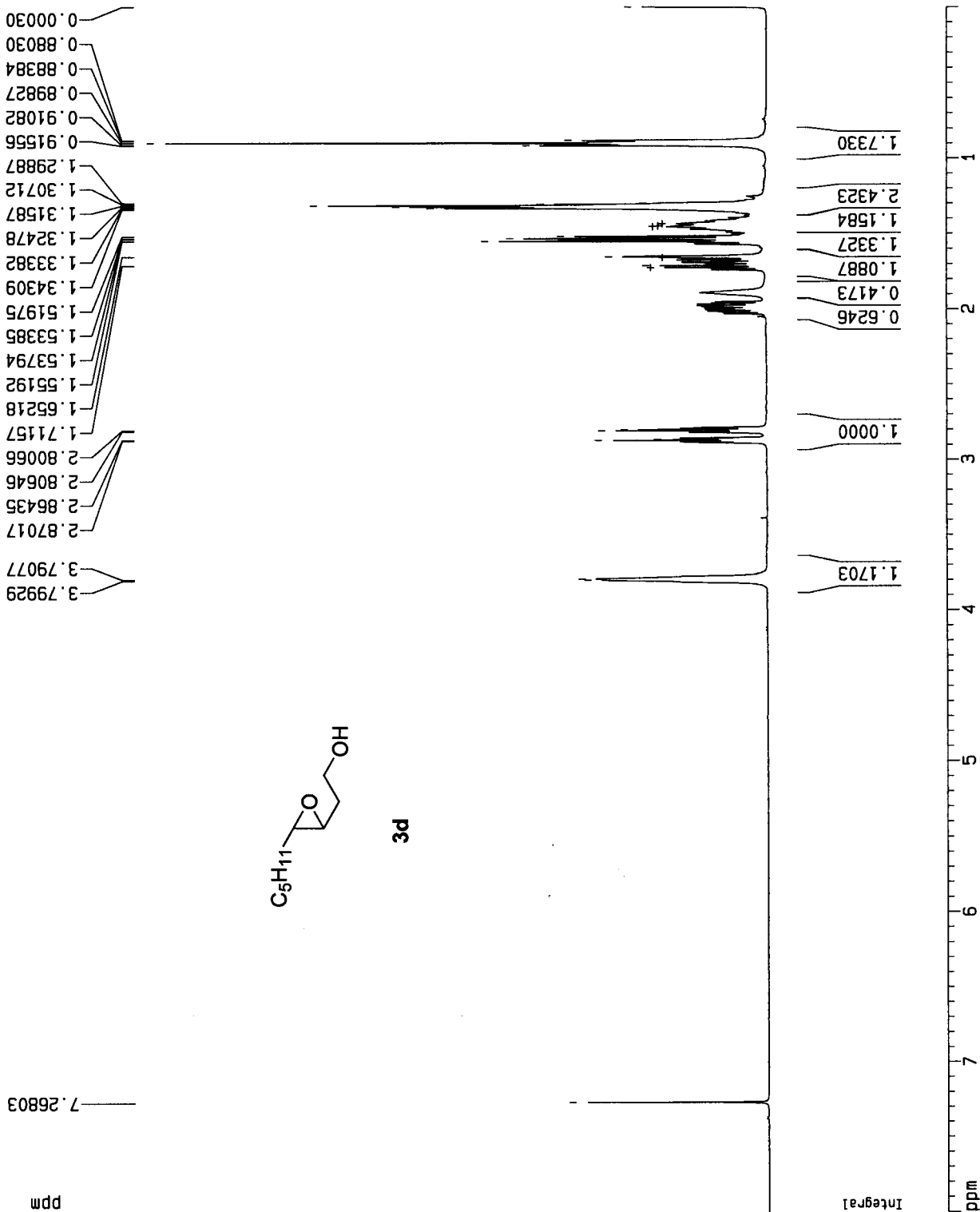
F2 - Acquisition Parameters
 Date_ 20060619
 Time 22.15
 INSTRUM spect
 PROBHD 5 mm GNP 1H
 PULPROG zg
 TD 16384
 SOLVENT CDD13
 NS 15
 DS 0
 SWH 4807.692 Hz
 FIDRES 0.293438 Hz
 AQ 1.7039860 sec
 RG 101.6
 DW 104.000 usec
 DE 6.00 usec
 TE 300.0 K
 D1 2.0000000 sec

===== CHANNEL f1 =====

NUC1 1H
 P1 10.50 usec
 PL1 0.00 dB
 SF01 400.1320007 MHz

F2 - Processing parameters
 SI 32768
 SF 400.1300063 MHz
 WDW EM
 SSB 0
 LB 0.30 Hz
 GB 0
 PC 1.00

1D NMR plot parameters
 CX 20.00 cm
 F1P 8.000 ppm
 F1 3201.04 Hz
 F2P 0.000 ppm
 F2 0.00 Hz
 PPMCM 0.40000 ppm/cm
 HZCM 160.05200 Hz/cm



3d

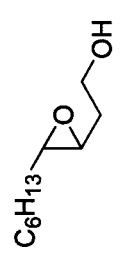
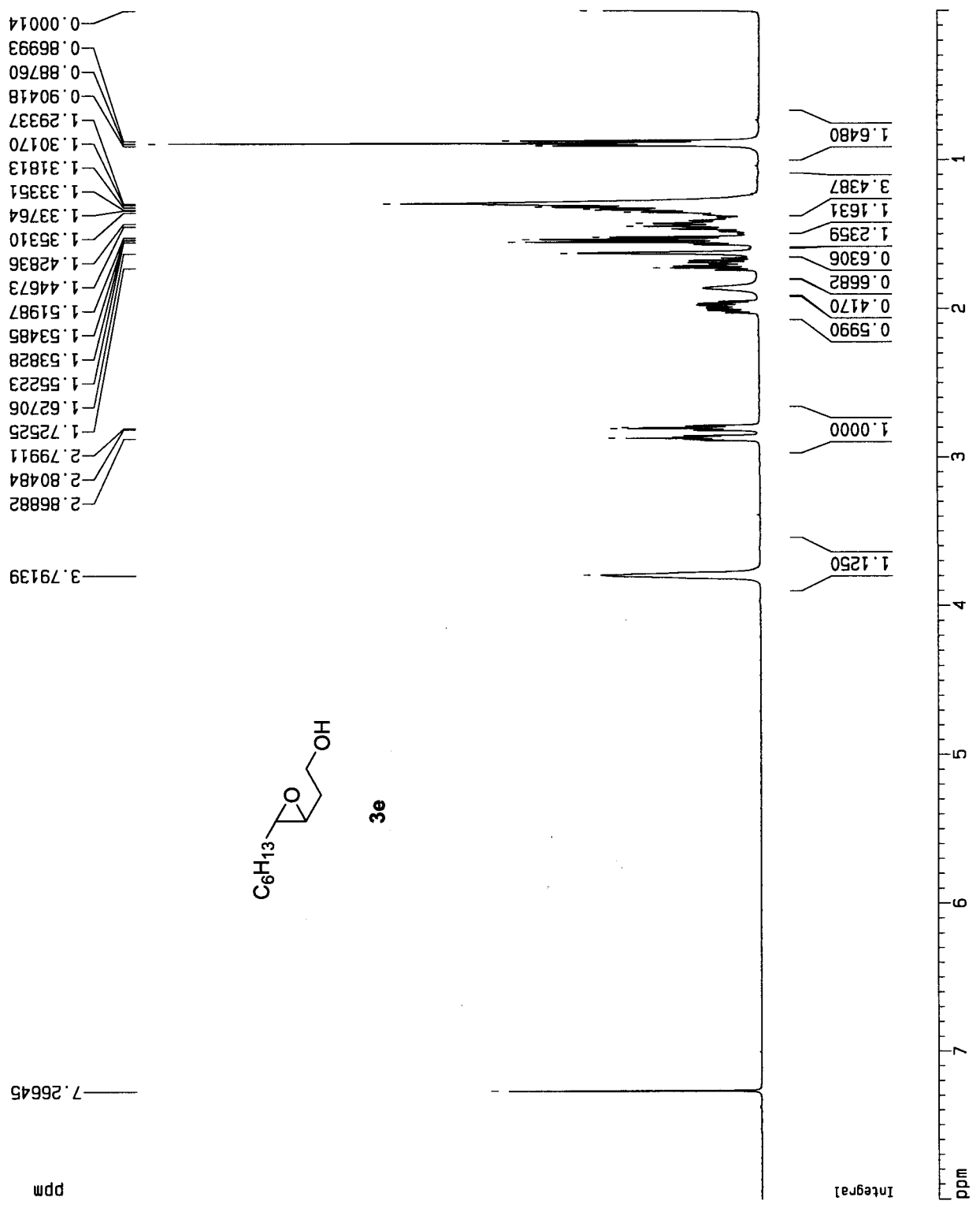
Current Data Parameters
 NAME trans-10-HAO
 EXPNO 1
 PROCNO 1

F2 - Acquisition Parameters
 Date_ 20060619
 Time 22:20
 INSTRUM spect
 PROBHD 5 mm QNP 1H
 PULPROG zg
 TD 16384
 SOLVENT CDC13
 NS 4
 DS 0
 SWH 4807.692 Hz
 FIDRES 0.293438 Hz
 AQ 1.7039860 sec
 RG 90.5
 DW 104.000 usec
 DE 6.00 usec
 TE 300.0 K
 D1 2.0000000 sec

===== CHANNEL f1 =====
 NUC1 1H
 P1 10.50 usec
 PL1 0.00 dB
 SF01 400.1320007 MHz

F2 - Processing parameters
 SI 32768
 SF 400.1300070 MHz
 WDW EM
 SSB 0
 LB 0.30 Hz
 GB 0
 PC 1.00

1D NMR plot parameters
 CX 20.00 cm
 F1P 8.000 ppm
 F1 3201.04 Hz
 F2P 0.000 ppm
 F2 0.00 Hz
 PPMCM 0.40000 ppm/cm
 HZCM 160.05200 Hz/cm



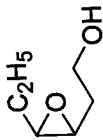
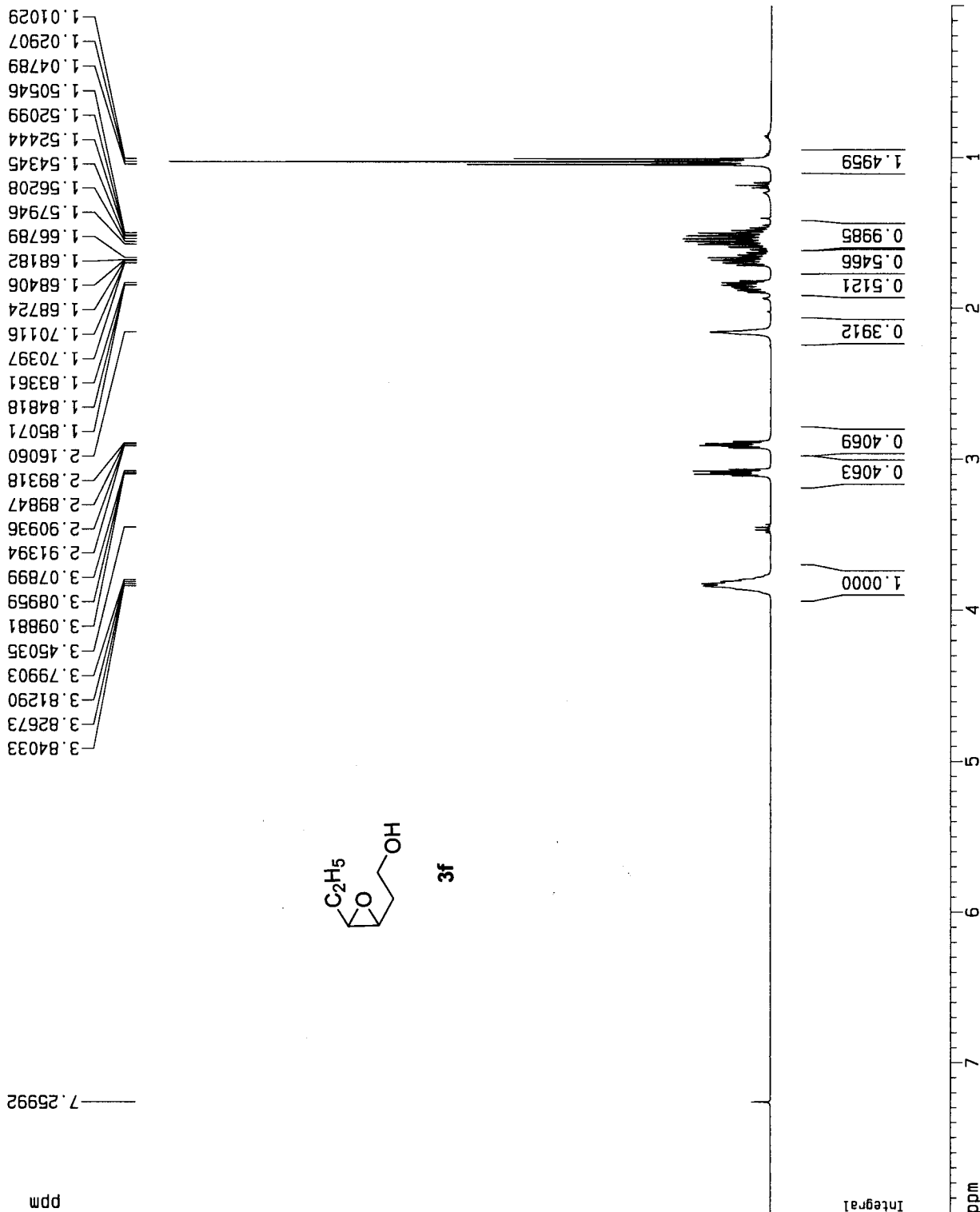
Current Data Parameters
 NAME HAA-cis-Et
 EXPNO 1
 PROCNO 1

F2 - Acquisition Parameters
 Date_ 20051205
 Time 0.06
 INSTRUM spect
 PROBHD 5 mm GNP 1H
 PULPROG zg
 TD 16384
 SOLVENT CDCl3
 NS 7
 DS 0
 SWH 7183.908 Hz
 FIDRES 0.438471 Hz
 AQ 1.1403764 sec
 RG 64
 DW 69.600 USEC
 DE 6.00 USEC
 TE 300.0 K
 D1 2.0000000 sec

===== CHANNEL f1 =====
 NUC1 1H
 P1 10.50 usec
 PL1 0.00 dB
 SF01 400.1328009 MHz

F2 - Processing parameters
 SI 32768
 SF 400.1300097 MHz
 WDW EM
 SSB 0
 LB 0.30 Hz
 GB 0
 PC 1.00

ID NMR plot parameters
 CX 20.00 cm
 F1P 8.000 ppm
 F1 3201.04 Hz
 F2P 0.000 ppm
 F2 0.00 Hz
 PPMCM 0.40000 ppm/cm
 HZCM 160.05200 Hz/cm



3f

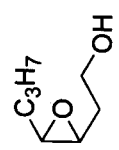
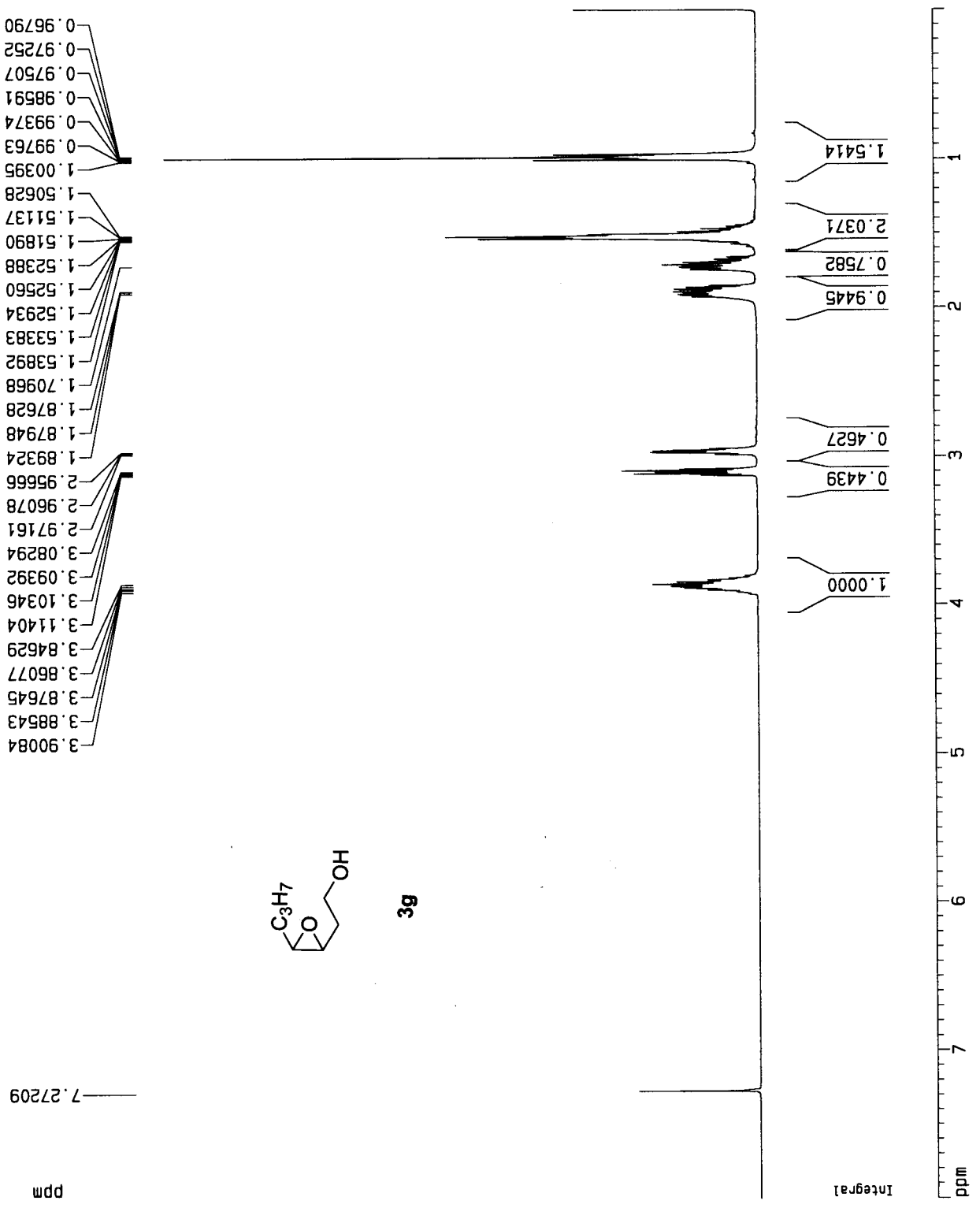
Current Data Parameters
 NAME ZX-cis-3
 EXPNO 1
 PROCNO 1

F2 - Acquisition Parameters
 Date_ 20061009
 Time 12.53
 INSTRUM spect
 PROBHD 5 mm QNP 1H
 PULPROG zg
 TD 16384
 SOLVENT CDC13
 NS 4
 DS 0
 SMH 4807.692 Hz
 FIDRES 0.293438 Hz
 AQ 1.7039860 sec
 RG 90.5
 DW 104.000 USEC
 DE 6.00 USEC
 TE 300.0 K
 D1 2.00000000 sec

===== CHANNEL f1 =====
 NUC1 1H
 P1 10.50 usec
 PL1 0.00 dB
 SF01 400.1320007 MHz

F2 - Processing parameters
 SI 32768
 SF 400.1300045 MHz
 WDW EM
 SSB 0
 LB 0.30 Hz
 GB 0
 PC 1.00

1D NMR plot parameters
 CX 20.00 cm
 F1P 8.000 ppm
 F1 3201.04 Hz
 F2P 0.000 ppm
 F2 0.00 Hz
 PPMCM 0.40000 ppm/cm
 HZCM 160.05200 Hz/cm



3g

Current Data Parameters

NAME ZX--cis-4
 EXPNO 1
 PROCNO 1

F2 - Acquisition Parameters

Date_ 20061009
 Time 12:59
 INSTRUM spect
 PROBHD 5 mm QNP 1H
 PULPROG zg
 TD 16384
 SOLVENT CDC13
 NS 8
 DS 0
 SWH 4807.692 Hz
 FIDRES 0.293438 Hz
 AQ 1.7039860 sec
 RG 101.5
 DM 104.000 usec
 DE 6.00 usec
 TE 300.0 K
 D1 2.00000000 sec

==== CHANNEL f1 =====

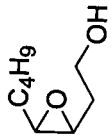
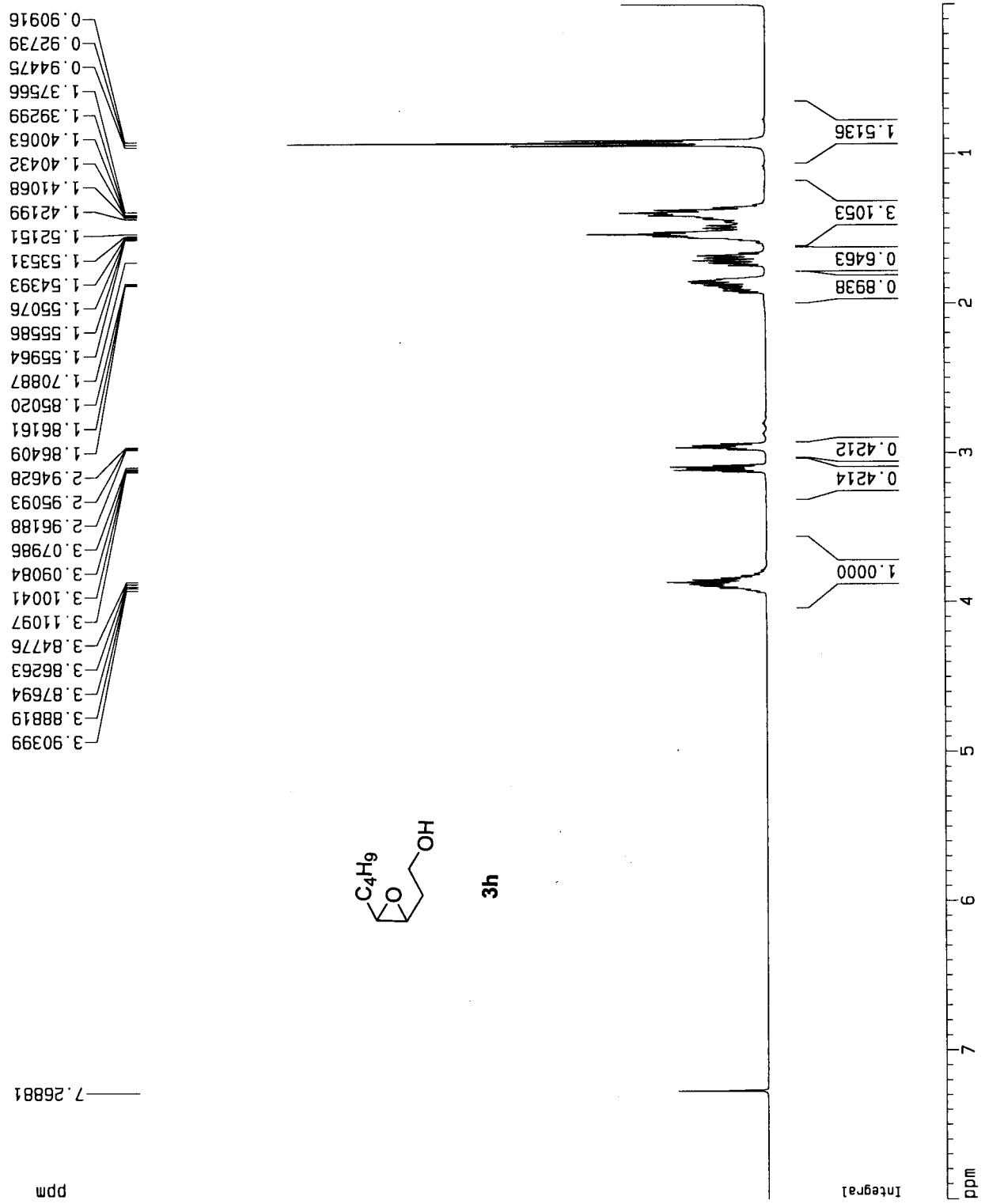
NUC1 1H
 P1 10.50 usec
 PL1 0.00 dB
 SF01 400.1320007 MHz

F2 - Processing parameters

SI 32768
 SF 400.1300057 MHz
 WDW EM
 SSB 0
 LB 0.30 Hz
 GB 0
 PC 1.00

1D NMR plot parameters

CX 20.00 cm
 F1P 8.000 ppm
 F1 3201.04 Hz
 F2P 0.000 ppm
 F2 0.00 Hz
 PPMCM 0.40000 ppm/cm
 HZCM 160.05200 Hz/cm



3h

Current Data Parameters
 NAME N-p
 EXPNO 1
 PROCNO 1

F2 - Acquisition Parameters
 Date_ 20060209
 Time 18.52
 INSTRUM spect
 PROBHD 5 mm QNP 1H
 PULPROG zg
 TD 16384
 SOLVENT CDCl3
 NS 8
 DS 0
 SWH 4807.692 Hz
 FIDRES 0.293438 Hz
 AQ 1.7039860 sec
 RG 4.5
 DM 104.000 usec
 DE 6.00 usec
 TE 300.0 K
 D1 2.0000000 sec

=====
 CHANNEL f1
 =====

NUC1 1H
 P1 10.50 usec
 PL1 0.00 dB
 SF01 400.1320007 MHz

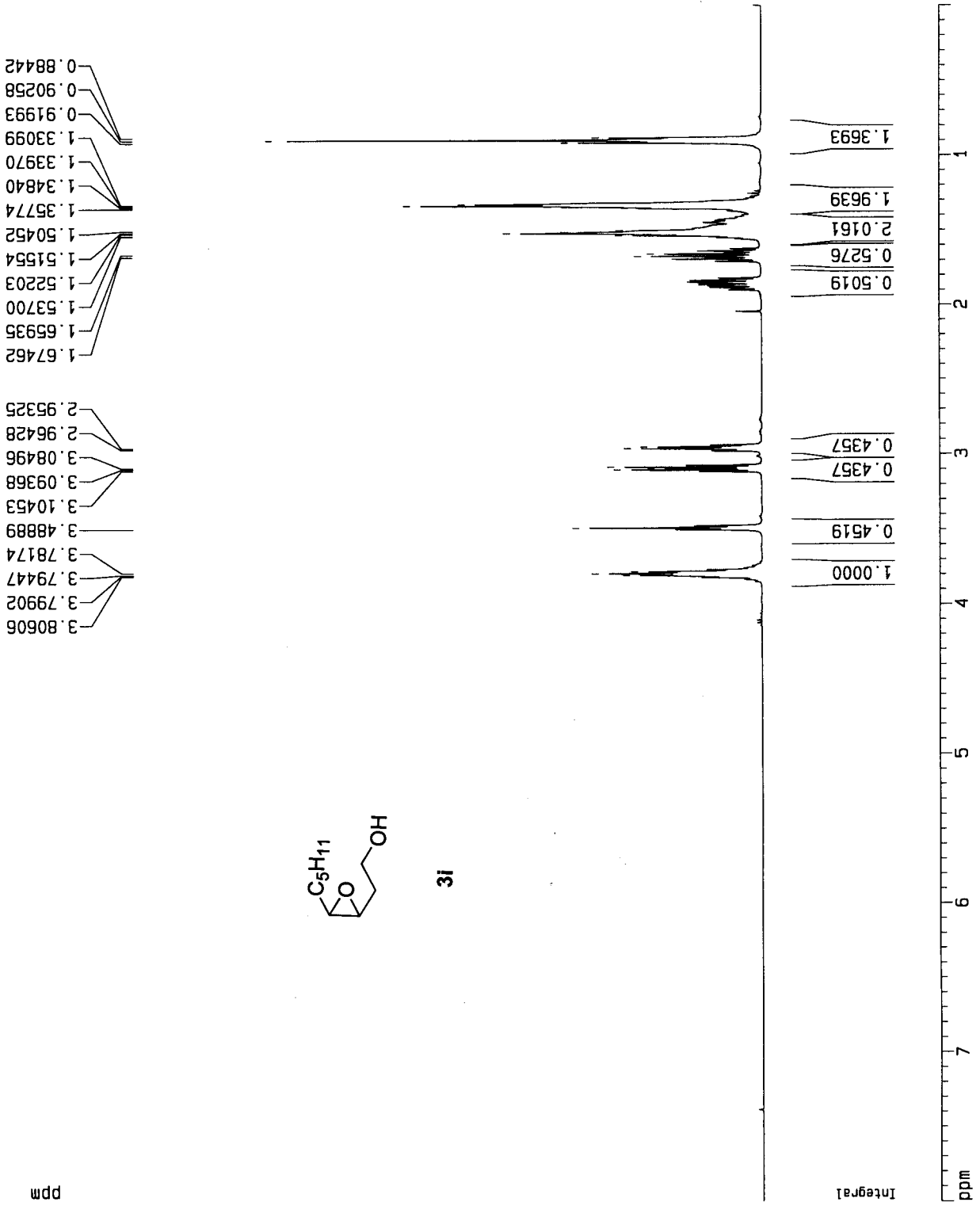
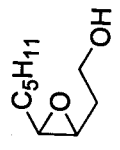
F2 - Processing parameters
 SI 32768
 SF 400.1299589 MHz
 MDW EM
 SSB 0
 LB 0.30 Hz
 GB 0
 PC 1.00

1D NMR plot parameters
 CX 20.00 cm
 F1P 8.000 ppm
 F1 3201.04 Hz
 F2P 0.000 ppm
 F2 0.000 Hz
 PPMCM 0.40000 ppm/cm
 HZCM 160.05197 Hz/cm

0.88442
 0.90258
 0.91993
 1.33099
 1.33970
 1.34840
 1.35774
 1.50452
 1.51554
 1.52203
 1.53700
 1.65935
 1.67462

2.95325
 2.96428
 3.08496
 3.09368
 3.10453
 3.48889
 3.78174
 3.79447
 3.79902
 3.80606

1.3693
 1.9639
 2.0161
 0.5276
 0.5019
 0.4357
 0.4357
 0.4519
 1.0000



ppm

Integral

ppm