

Presentation of RGDS Epitopes on Self-Assembled Nanofibers of Branched Peptide Amphiphiles

Mustafa O. Guler[†], Lorraine Hsu[†], Stephen Soukasene[‡], Daniel A. Harrington[‡], James F. Hulvat^{‡,§} and Samuel I. Stupp^{†,‡,§,#}*

[†]Department of Chemistry, [‡]Department of Materials Science and Engineering,

[§]Feinberg School of Medicine, [#]Institute for BioNanotechnology in Medicine

Abbreviations.

Boc.....ter. Butoxycarbonyl

DIEA.....N,N-Diisopropylethylamine

DMF.....N,N-Dimethylformamide

EDTA.....Ethylenediaminetetraacetic Acid

Fmoc.....9-Fluorenylmethoxycarbonyl

HBTU.....2-(1H-Benzotriazol-1-yl)-1,1,3,3-tetramethyluroniumhexafluorophosphate

Mtt.....4-Methyltrityl

TFA.....Trifluoroacetic acid

TIS..... Triisopropylsilane

DPTS..... 4-(dimethylamino)pyridinium p-toluenesulfonate

DIPC..... Diisopropyl carbodiimide

1X TNE solution.... 1 L of distilled H₂O, 12.1g Tris base, 3.7g Na₂EDTA.2H₂O, pH 7.4,

Table S1. Molecular weights for the Peptide Amphiphiles.

Molecule	Mass Expected	Mass Observed
1	1369.61	1368.49
3A	1754.13	1753.42
3B	1922.45	1922.78
4A	1754.13	1753.92
4B	1922.45	1922.57
5	1183.4	1183.88
6	1736.24	1736.62
7	2151.64	2153
8	1810.14	1811.75
9	1890.36	1891.48
10	2329.87	2328.85
11	1831.5	1833.04
12	2408.15	2409.62

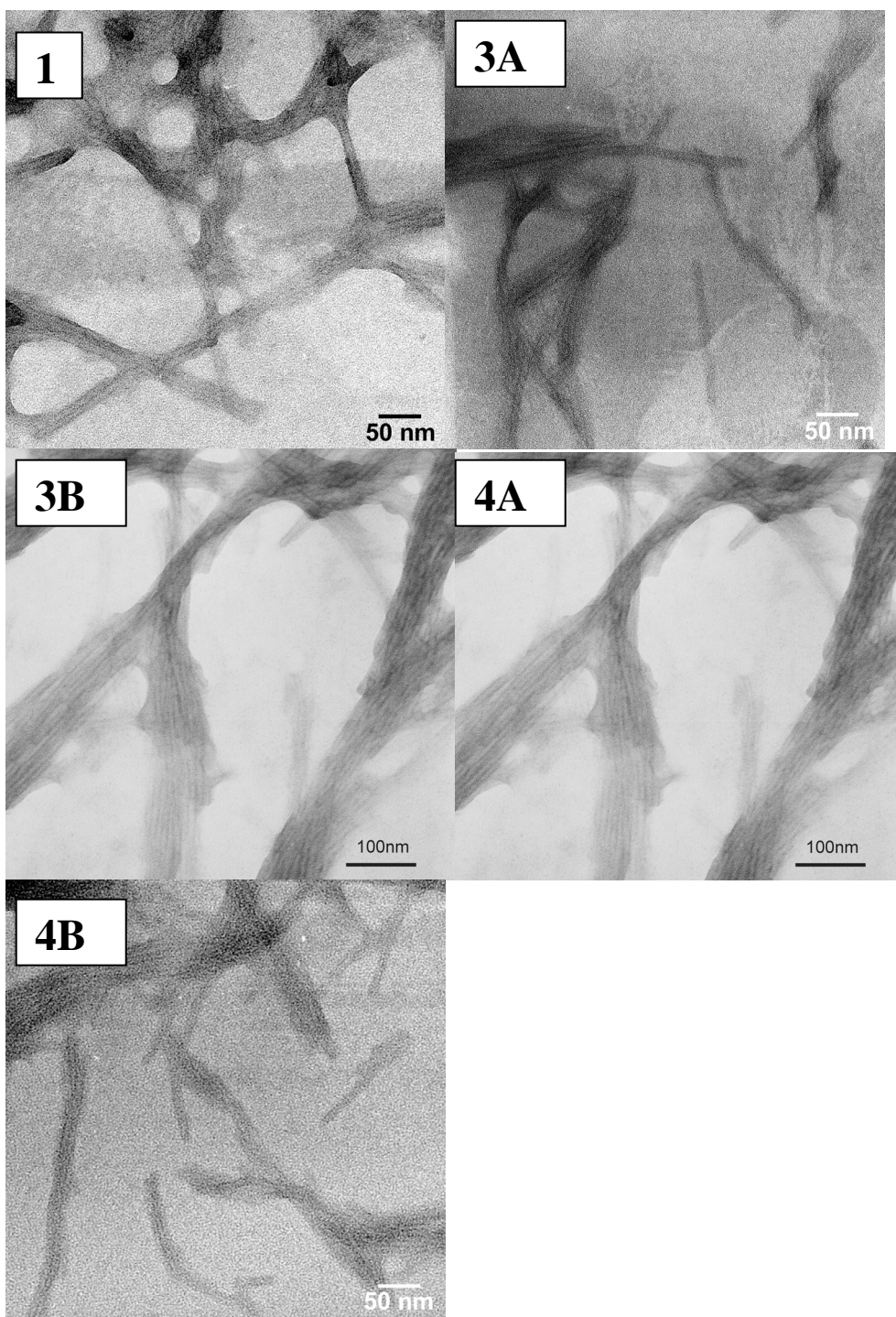


Figure S1. Negatively stained TEM micrographs of PAs shown in Chart 1.

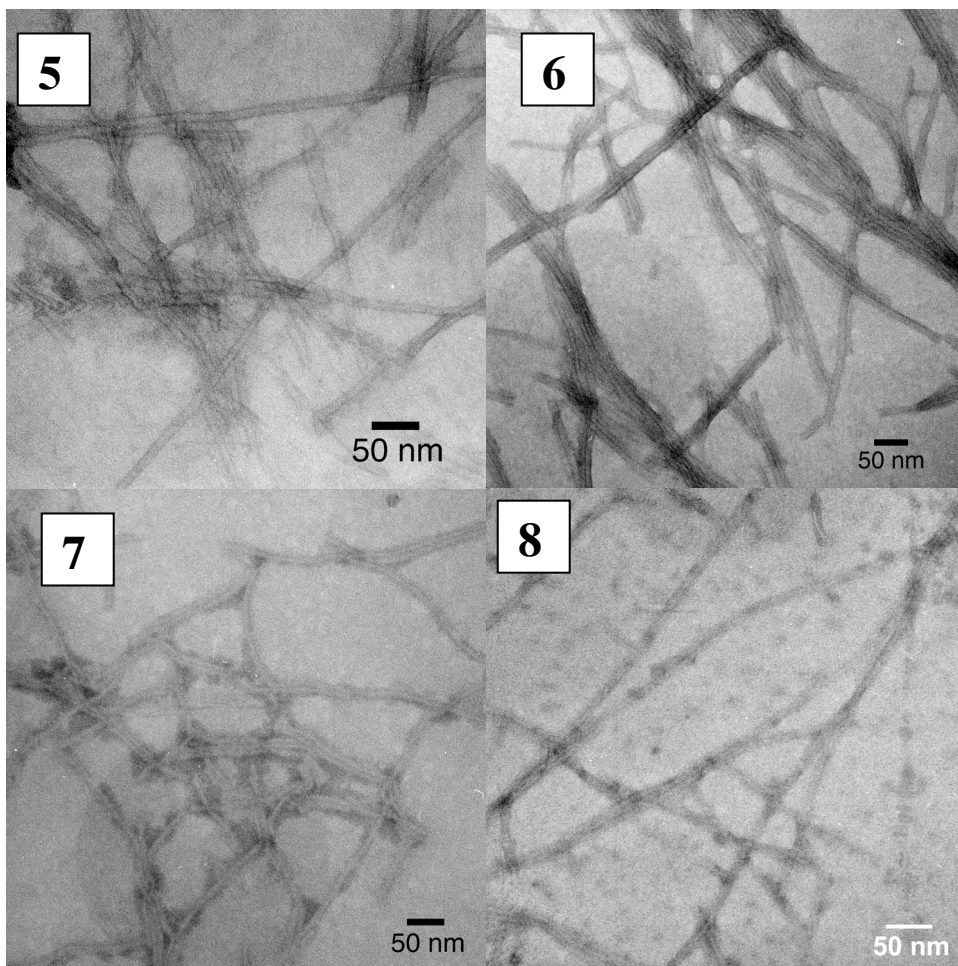


Figure S2. Negatively stained TEM micrographs of PAs shown in Chart 2.

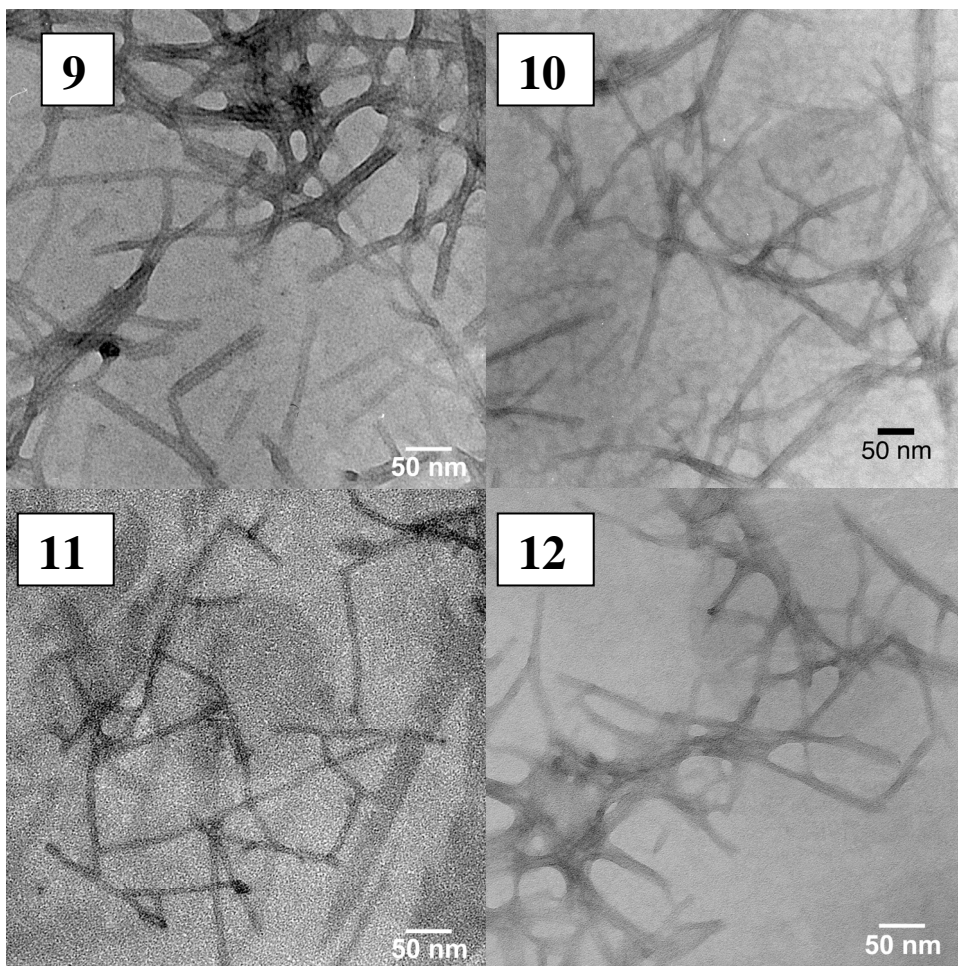


Figure S3. Negatively stained TEM micrographs of PAs shown in Chart 3, 4 and 5.

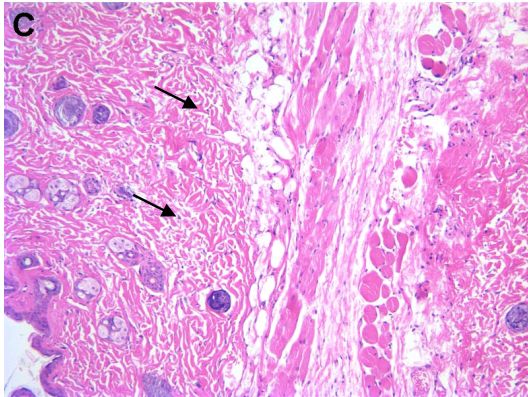
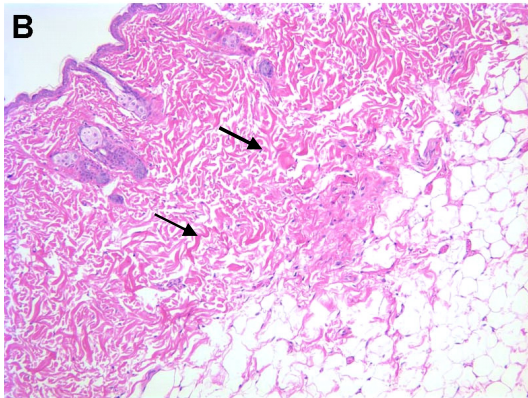
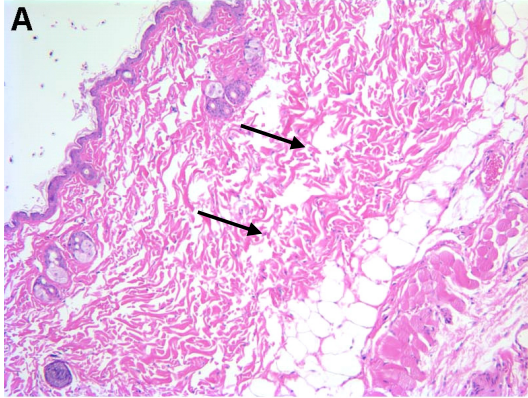


Figure S4. : Paraffin embedded, hematoxylin and eosin (H & E) stained histological sections from male C57 BL/6 mice four days after subcutaneous injection with 10 microliters of (a) vehicle (water) (b) 10 mg/mL aqueous solution of 5 and (c) 10 mg/mL aqueous solution of 6. The staining pattern reveals normal epidermal and dermal layers (left to right), with the approximate injection sites indicated by the arrow. Cell nuclei are stained blue by H&E, with the surrounding tissue stained red. This provides a basis to evaluate the number and size of cells in the tissue section. No evidence of a large-scale inflammatory reaction is observed, as would be evidenced by infiltration of large number of macrophages and/or the presence of giant cells.