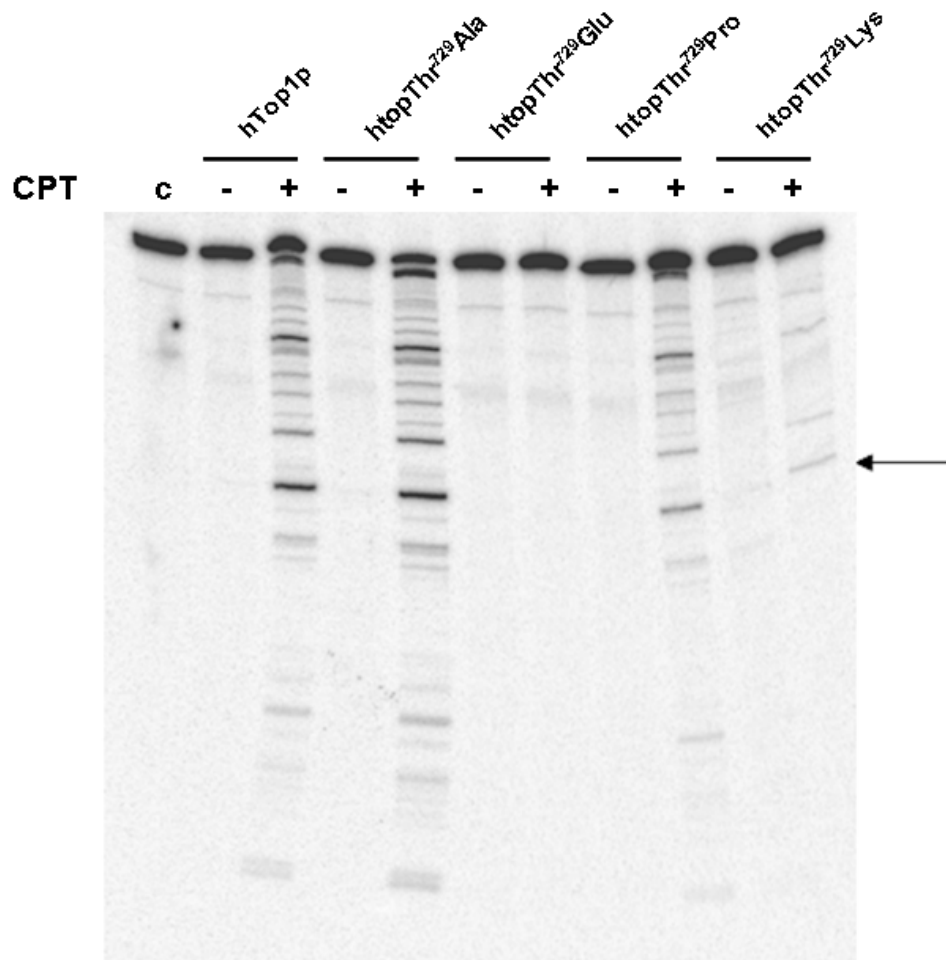


FIGURE 4S: Cleavage-religation equilibrium using equal activity of protein



Equal activity of hTop1p, htop1Thr729Ala, htop1Thr729Pro, htop1Thr729Lys or htop1Thr729Glu were incubated with a single ³²P end-labeled DNA fragment in absence or presence of CPT as described in the Materials and Methods section. After 30 minutes the reactions were stopped with 0.5% SDS and the cleavage products resolved by Urea/PAGE. C indicates no enzyme control. The arrow indicates the position of a high affinity cleavage site.