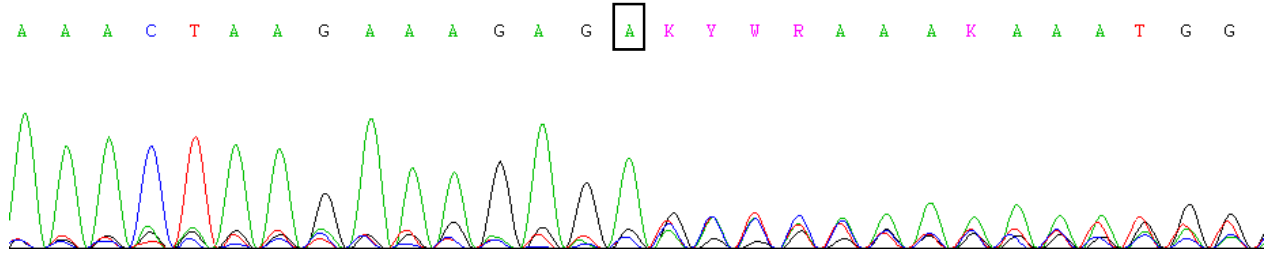


***ccmB*, Ler , -231**

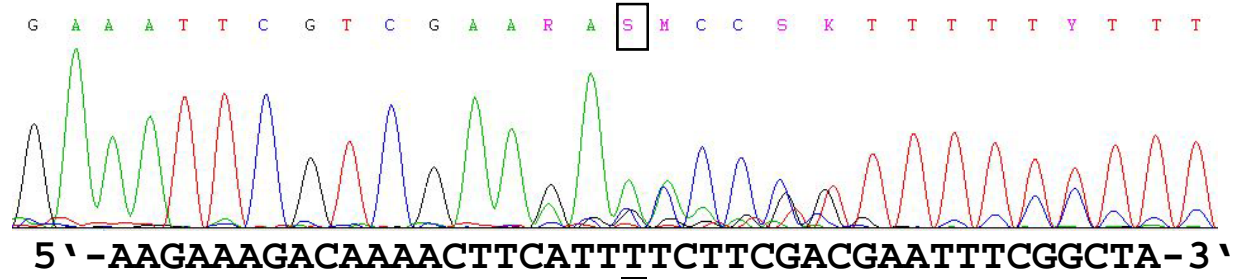
5' -CTCTTTTCTCGTAGTGTGCACAGTTTGCTTGCATGCCGCCTT- 3'



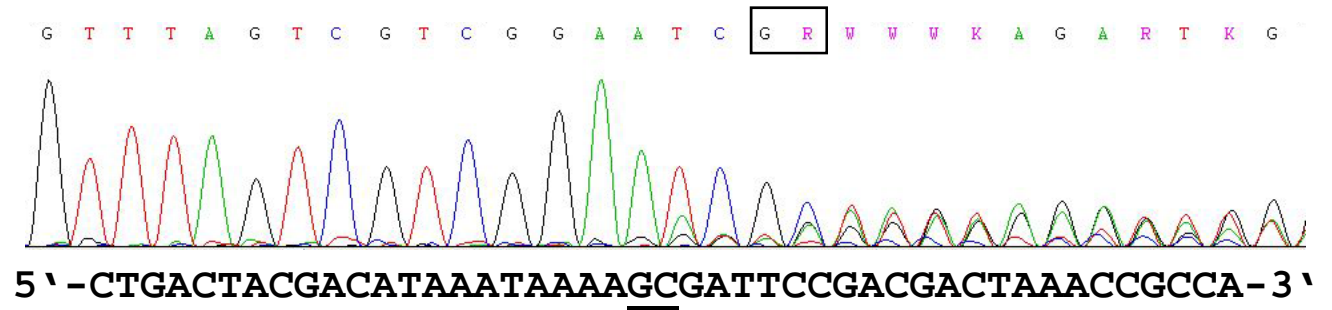
***ccmB*, Ler , -200**

5' -TTGCATGCCGCCTTAGGCACATCTCTTTTCTTAGTTTTCATGC- 3'

***nad4*, Ler , -390**



***ccmC*, C24: -390/-391**



Diagrams of the direct sequence analysis of the PCR products identifying 5' ends of alternative mRNAs. The gene, accession and the position of the 5' end relative to the ATG (+1) are indicated. Boxes and underlines indicate the 5' terminal nucleotides.

Forner et al., Supplementary Figure 2