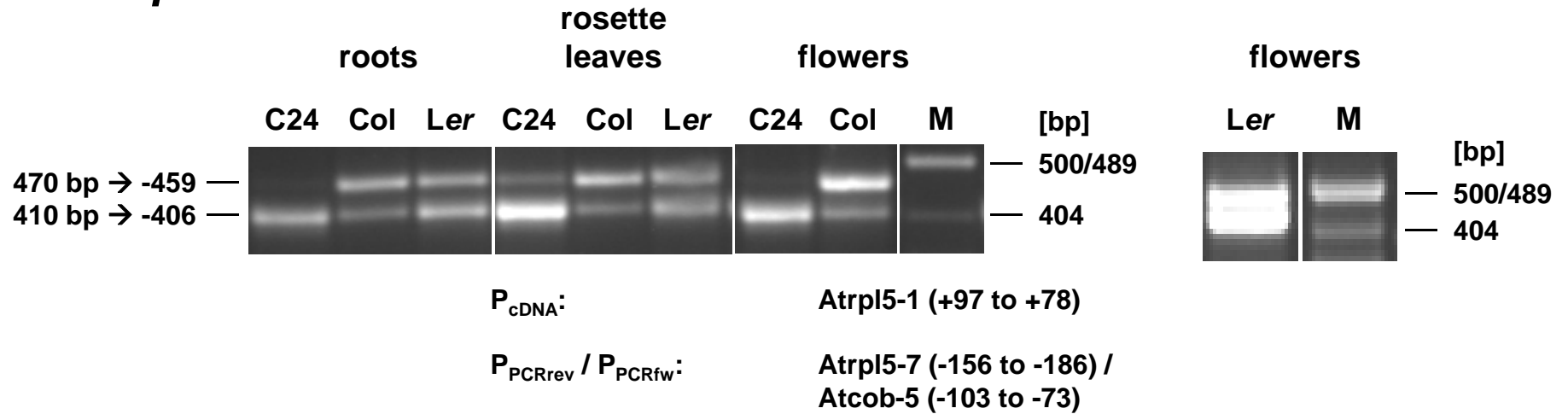
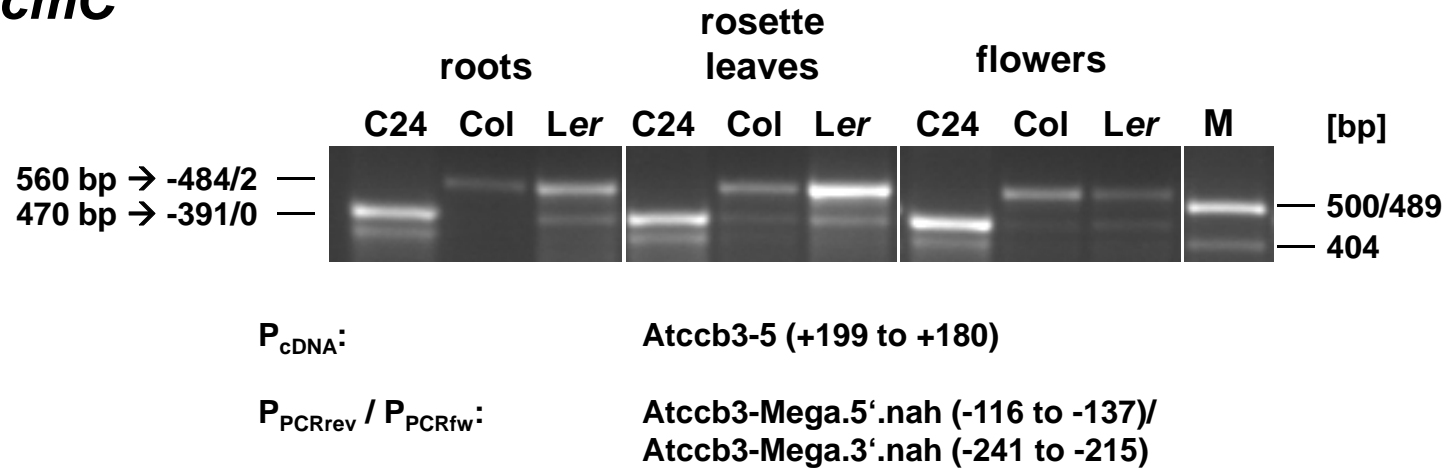
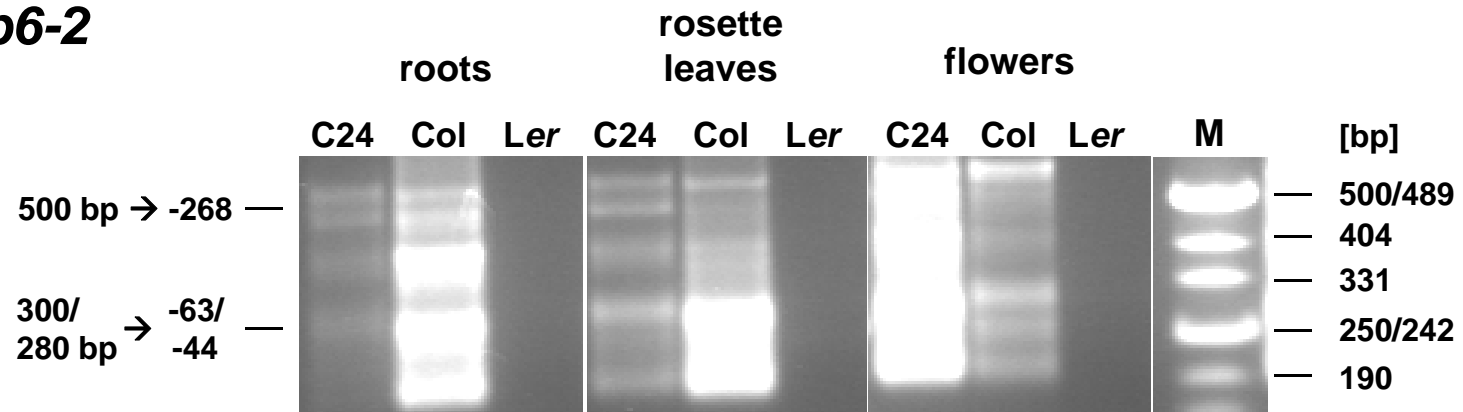


C*rpl5***D***ccmC*

E***atp6-2*** P_{cDNA} :

Atatp6-5 (+105 to +86)

 $P_{\text{PCRrev}} / P_{\text{PCRfw}}$:Atatp6-2.Mega.5' (+85 to + 57) /
Atatp6.Mega.3' (-103 to -75)**CR-RT-PCR analysis of polymorphic mRNAs in different tissues.**

Investigation of the *nad9* (-202 5' end), *ccmB* (-202 5' end), *rp15* (-459/-406 5' ends), *ccmC* (-484/2 // -391/0 5' ends) and *atp6-2* mRNA polymorphisms in additional tissues in C24, Col and Ler by CR-RT-PCR. For details see legends to Figures 1 and 3.