

Supplementary material

Fig S1 Western Blot analysis of HeLa cells and sp-HeLa extracts for Hsc/Hsp70, Hsp40 and Asna-1/TRC40 levels: 1-Total HeLa cell lysate, 2- sp-HeLa lysate.

Fig S2 Chemical Structure of MAL3-101, MAL3-051 (used as a negative control) and DMT002220 (denoted 2220 hereafter).

Fig S3 RRL was incubated with compound 2220 at 100 μ M for 20min at 30°C before being subjected to centrifugation for 1h at 100.000 *g*. The supernatant and the pellet fractions were recovered, mixed with Laemmli buffer and blotted for SRP (equivalent of 5 μ l of RRL). When indicated, purified SRP (10nM final) was added before treatment to increase its level in RRL and to compensate for the loss of SRP during centrifugation due to its association with the ribosome, thus enabling proper detection.

Figure S1

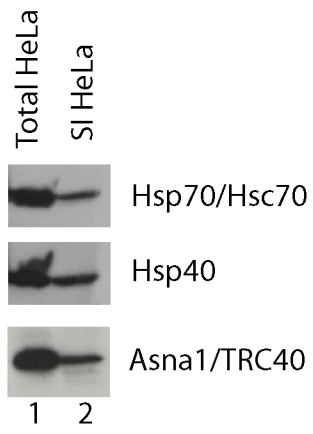


Figure S2

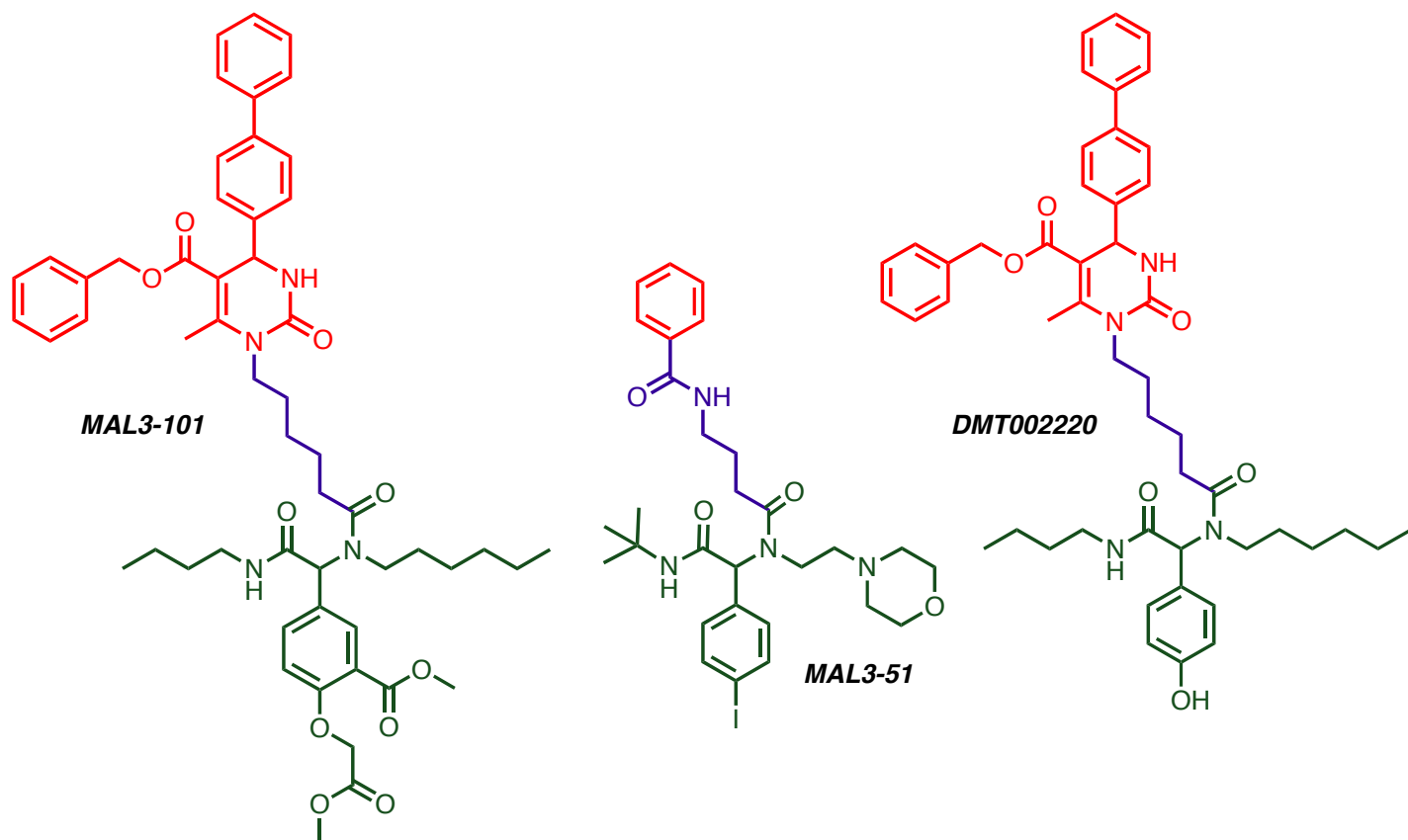


Figure S3

