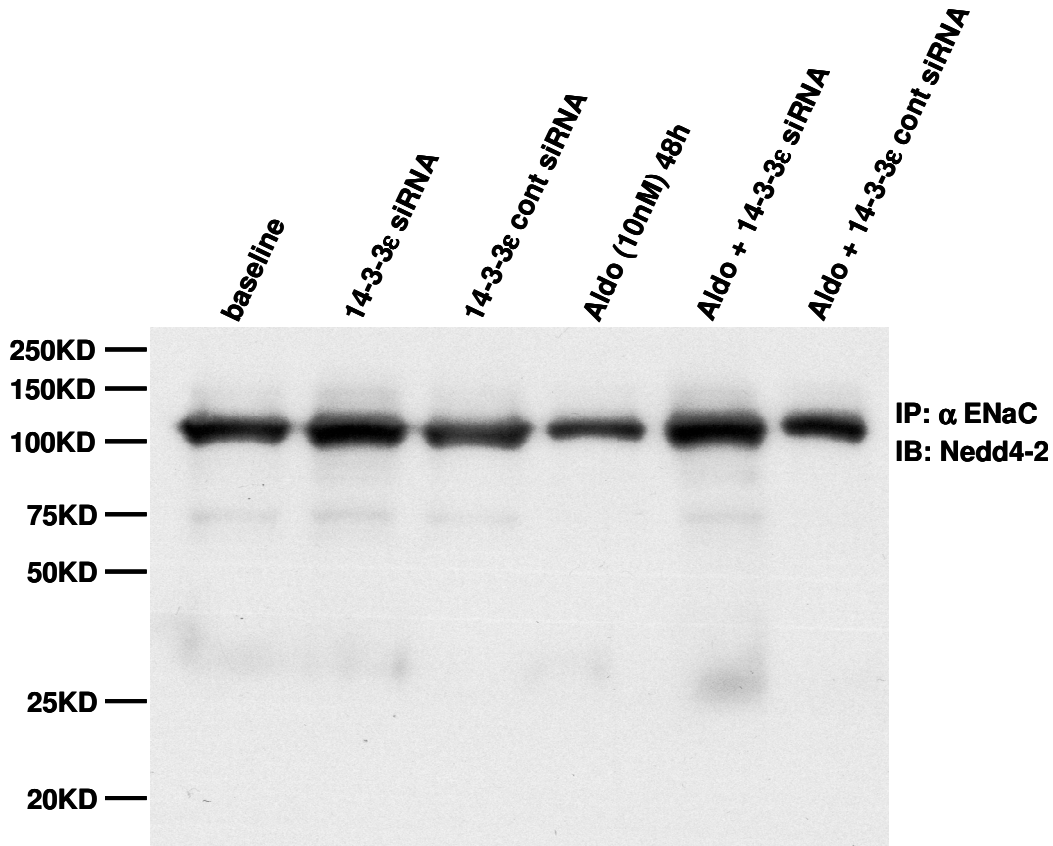


Supplemental Fig.1



The complete gel (10%) from an immunoblot of Nedd4, corresponding to the data from Fig1A (2nd row). In brief, mCCD epithelia were treated with 10 nM aldosterone and/or transfected with control siRNAs or those targeting 14-3-3ε for 48 hrs before cell lysis. Co-IP of Nedd4-2 with α-ENaC indicates that the Nedd4 antibody does not detect other WW domain proteins in mCCD cell lysates.