

Legend for Supplemental Material

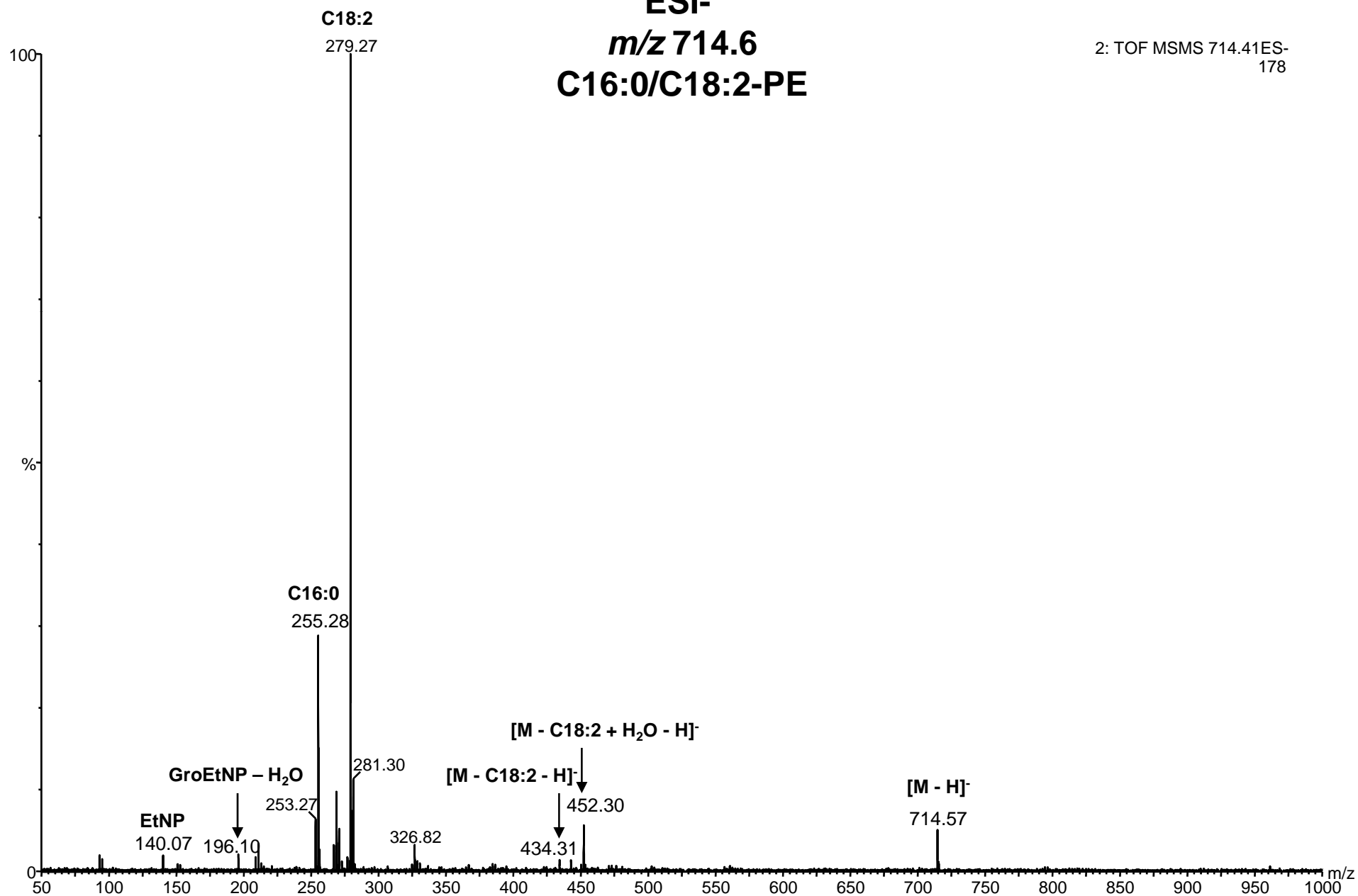
Supplemental Figure 1. Tandem mass spectrometry analysis of the major *H. capsulatum* phospholipid

species. (A-E) Negative-ion mode MS/MS spectra of the ion species at m/z 714.6, 716.6, 740.6, 742.6, and 774.5, respectively. **(F-Q)** Positive-ion mode MS/MS spectra of the ion species at m/z 746.7, 760.7, 762.7, 764.7, 766.7, 780.7, 782.7, 786.7, 790.7, 804.7, 806.7, and 808.7, respectively. The assignments for the fragment-ion species are indicated. C16:0, C18:0, C18:1, C18:2, and C20:4, carboxylate ions of palmitic acid, stearic acid, oleic acid, linoleic acid, and arachidonic acid (or their isomers), respectively; Cho, choline; ChoP, phosphocholine; EtN, ethanolamine; EtNP, ethanolaminephosphate; EtNP_c, cyclic ethanolaminephosphate; EtP, ethylenephosphate; GroEtNP, glycerol ethanolaminephosphate; Me, methyl group; Me₃N, trimethylamine; m/z , mass to charge ratio; PC, phosphatidylcholine; PE, phosphatidylethanolamine; PS, phosphatidylserine; Ser, serine; SerP, serinephosphate.

Supplemental Figure 1A

ESI-
***m/z* 714.6**
C16:0/C18:2-PE

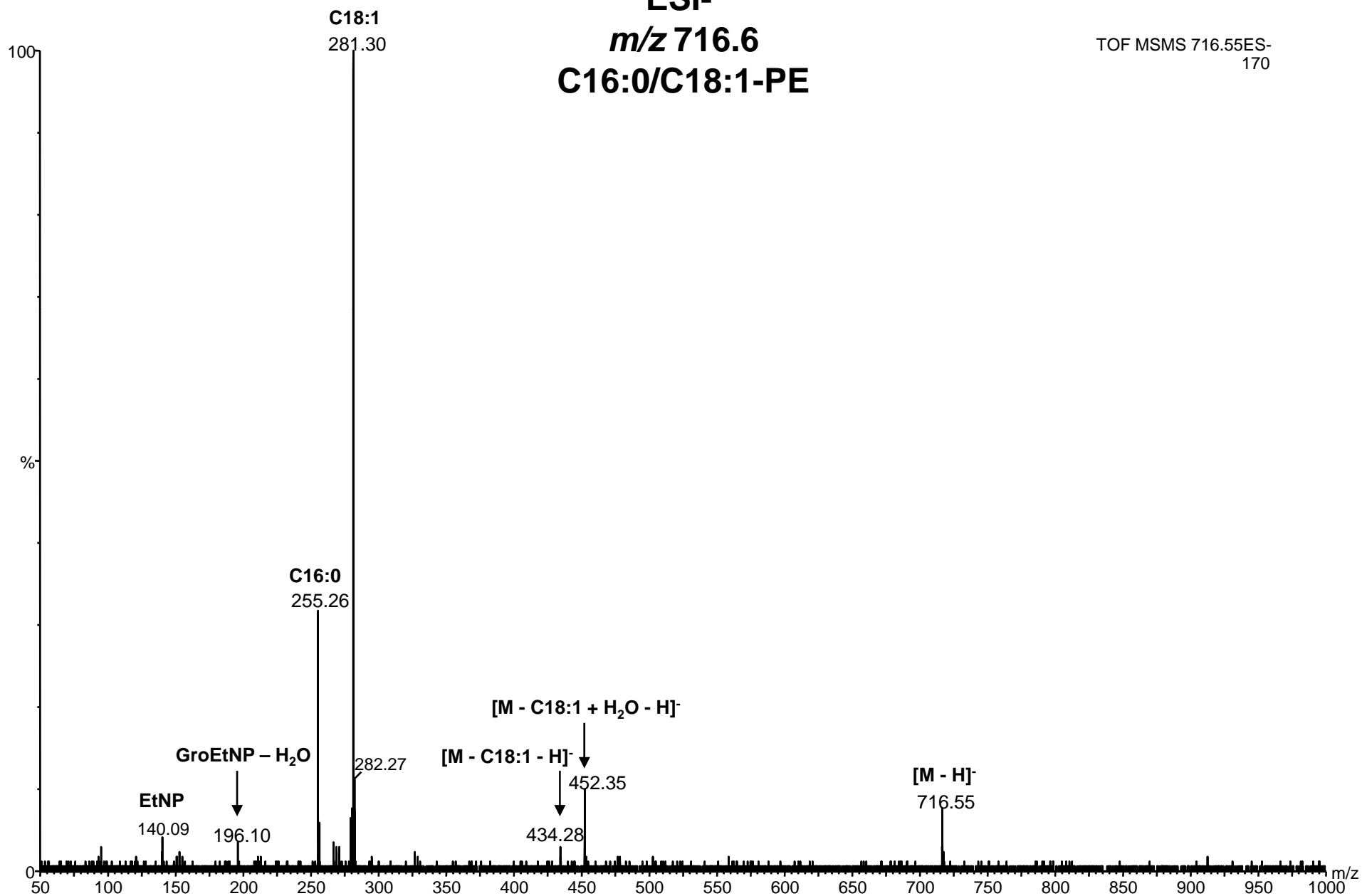
2: TOF MSMS 714.41ES-
178



Supplemental Figure 1B

ESI- *m/z* 716.6 C16:0/C18:1-PE

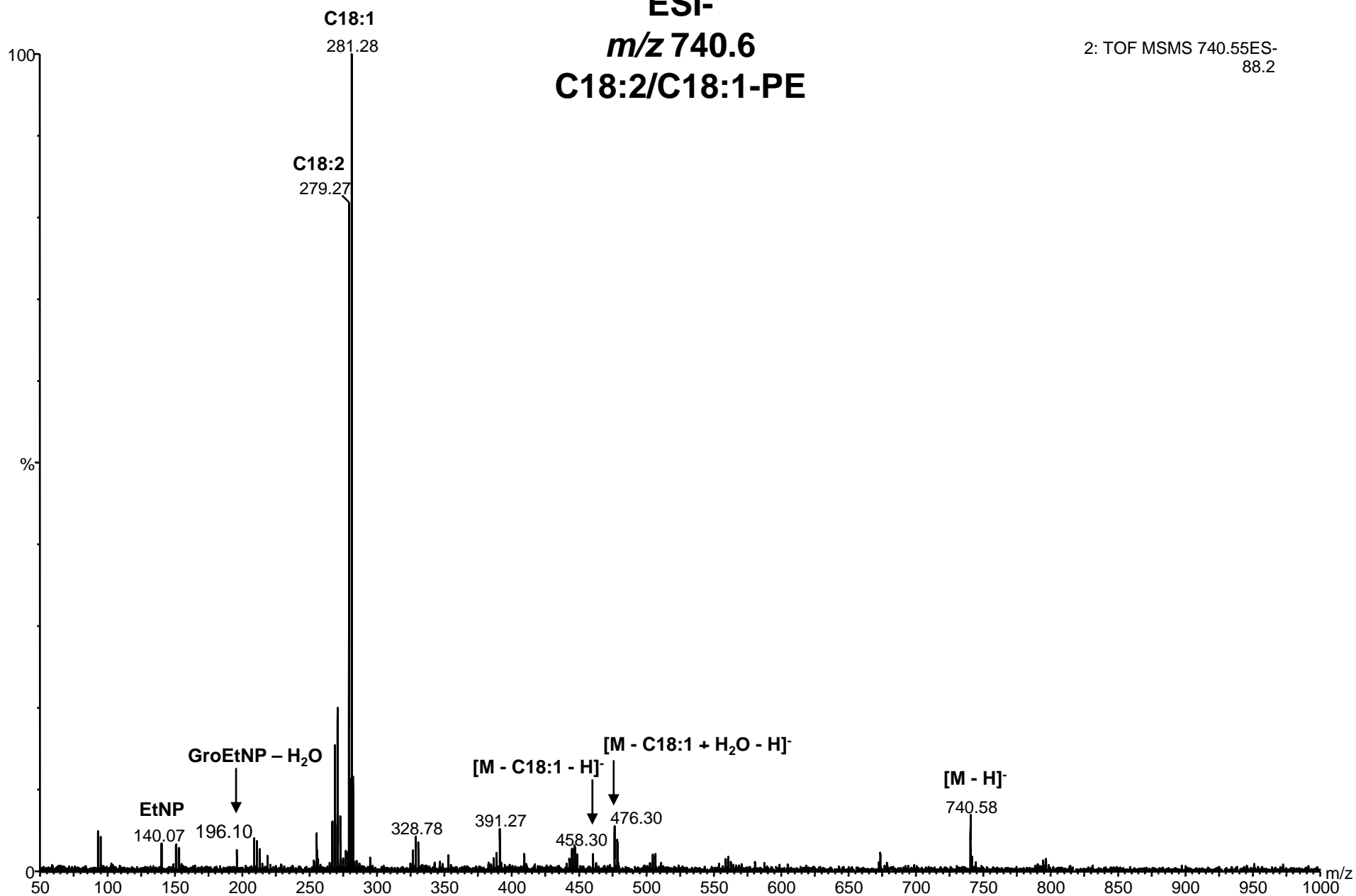
TOF MSMS 716.55ES-
170



Supplemental Figure 1C

ESI-
***m/z* 740.6**
C18:2/C18:1-PE

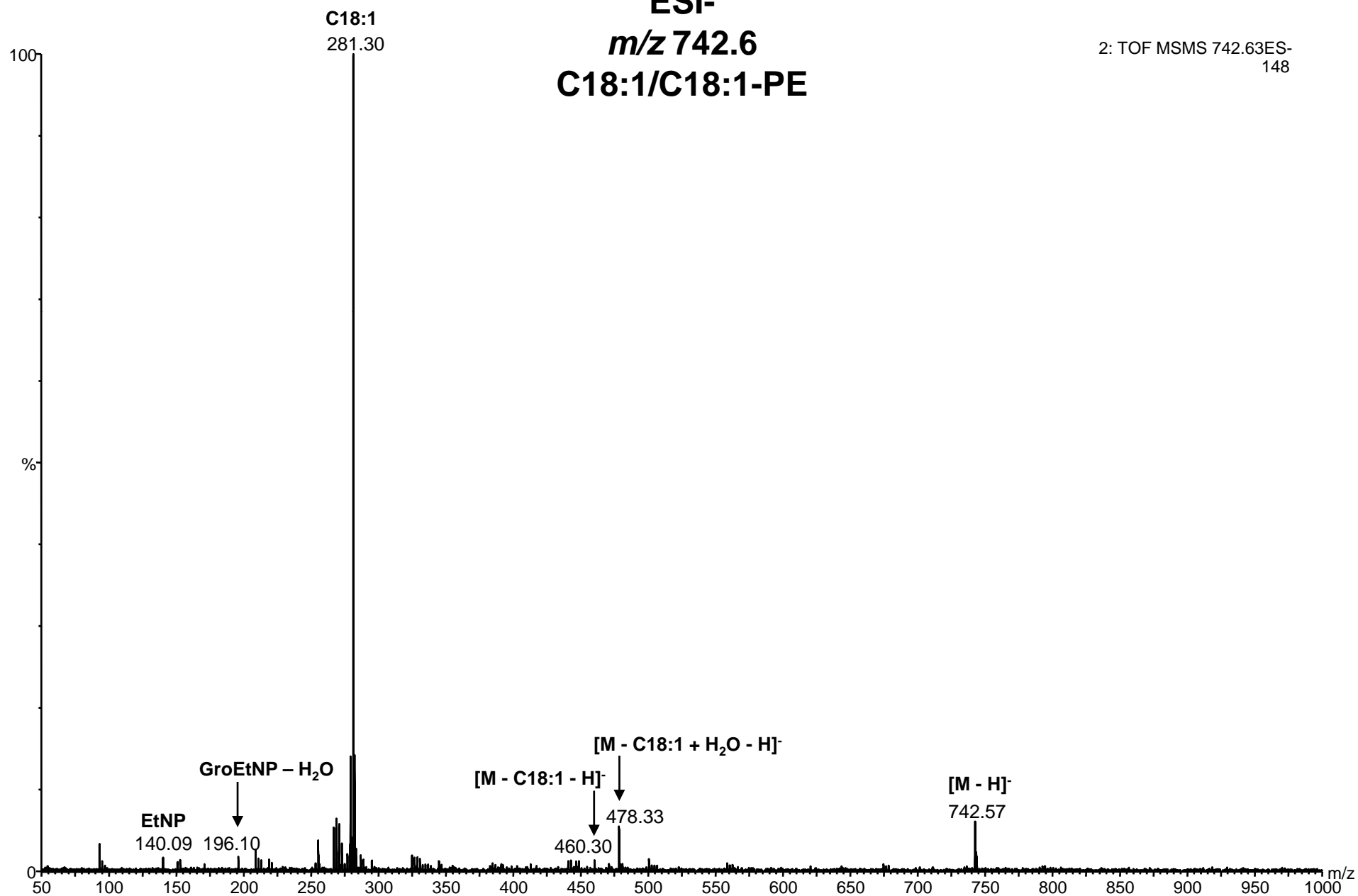
2: TOF MSMS 740.55ES-
88.2



Supplemental Figure 1D

ESI-
***m/z* 742.6**
C18:1/C18:1-PE

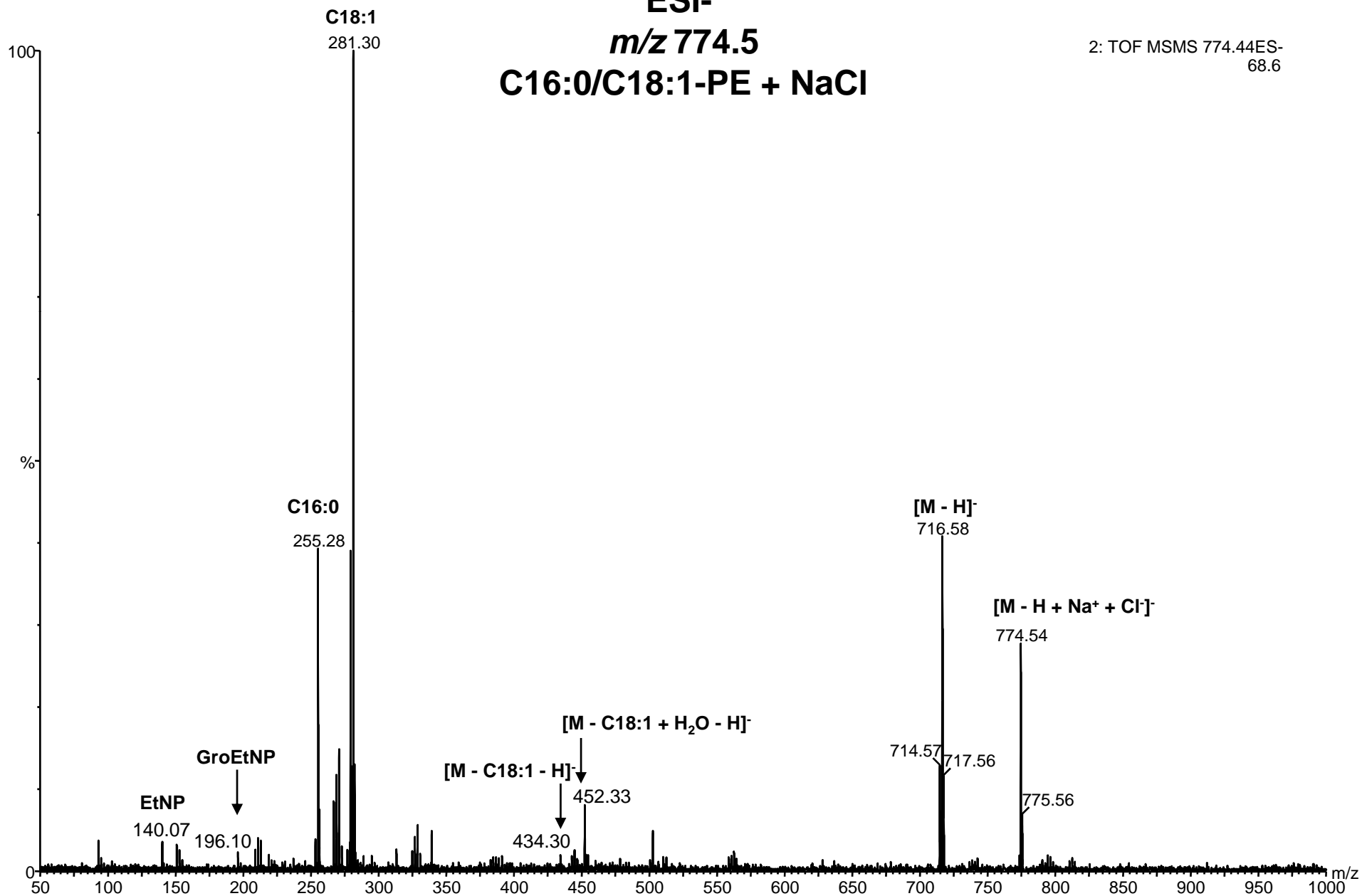
2: TOF MSMS 742.63ES-
148



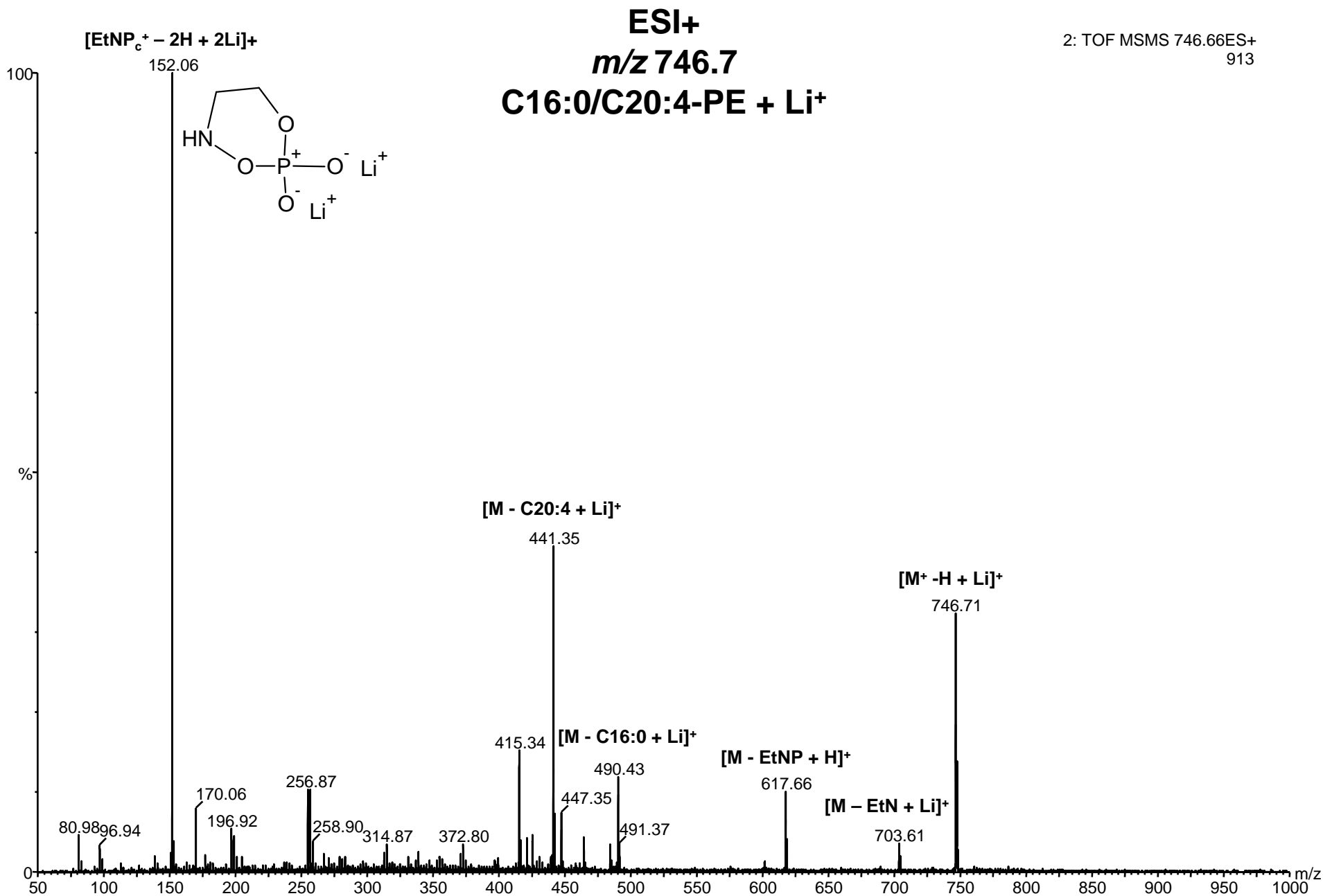
Supplemental Figure 1E

ESI-
***m/z* 774.5**
C16:0/C18:1-PE + NaCl

2: TOF MSMS 774.44ES-
68.6



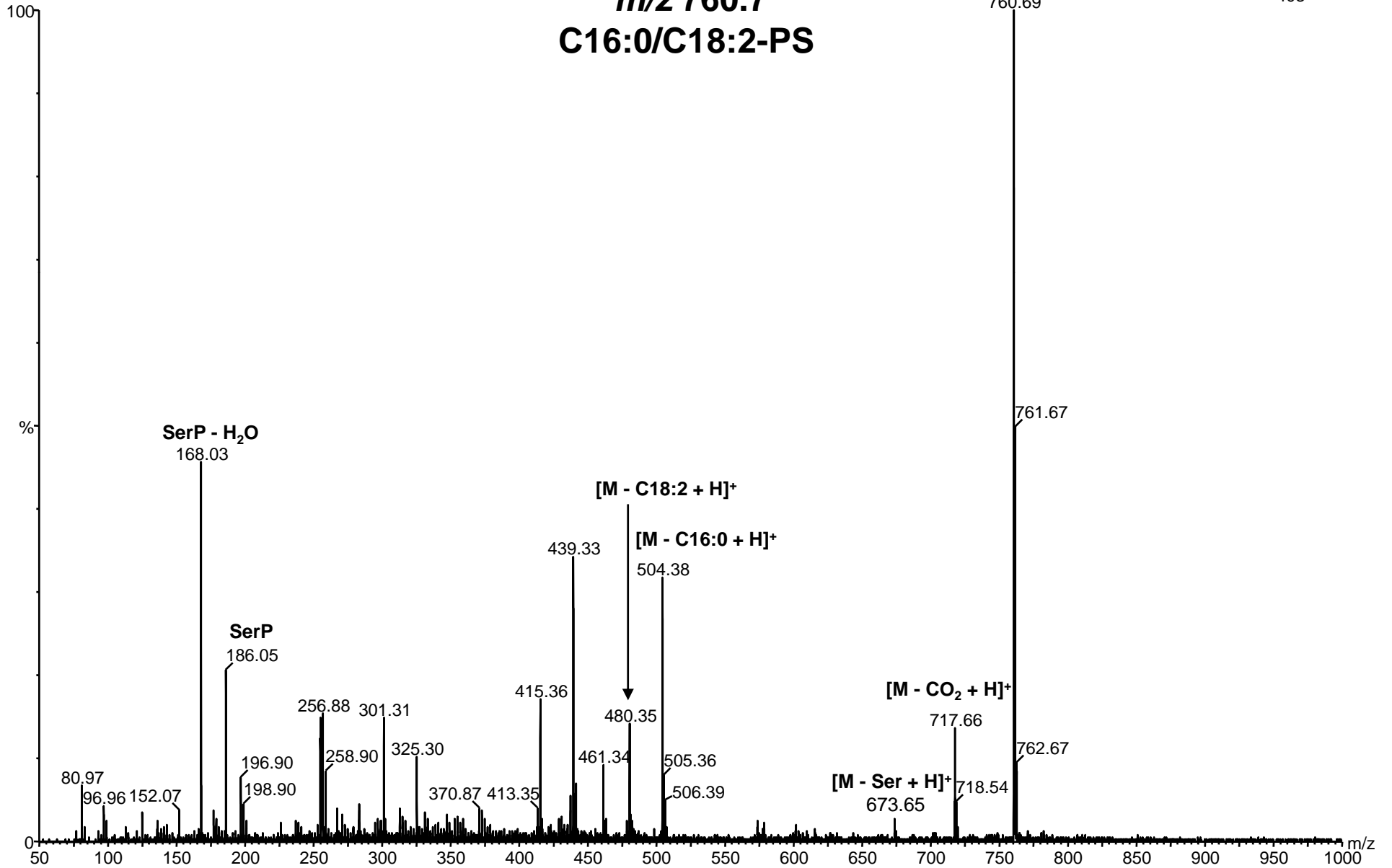
Supplemental Figure 1F



Supplemental Figure 1G

ESI+
***m/z* 760.7**
C16:0/C18:2-PS

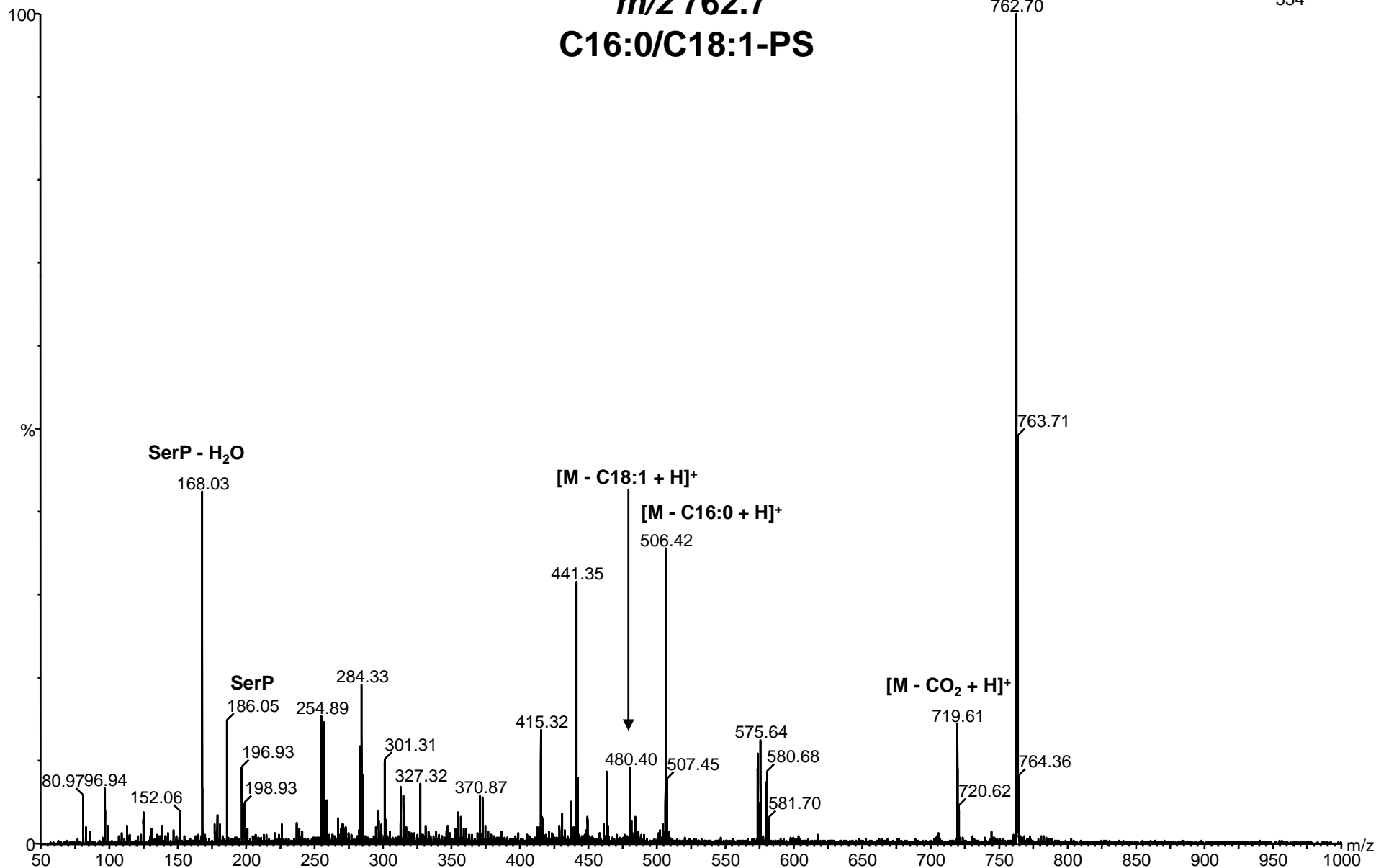
2: TOF MSMS 760.69ES+
403



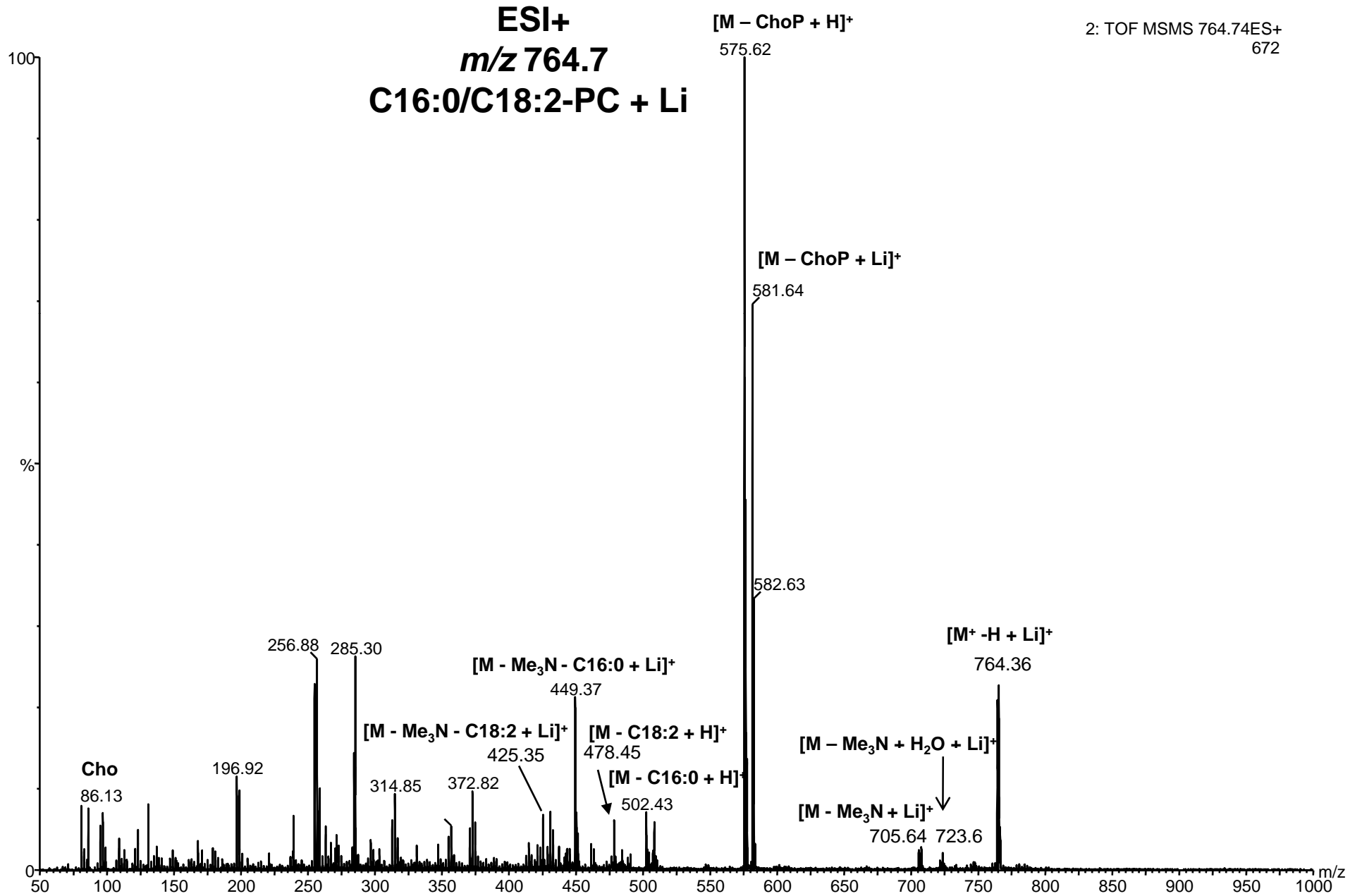
Supplemental Figure 1H

ESI+
***m/z* 762.7**
C16:0/C18:1-PS

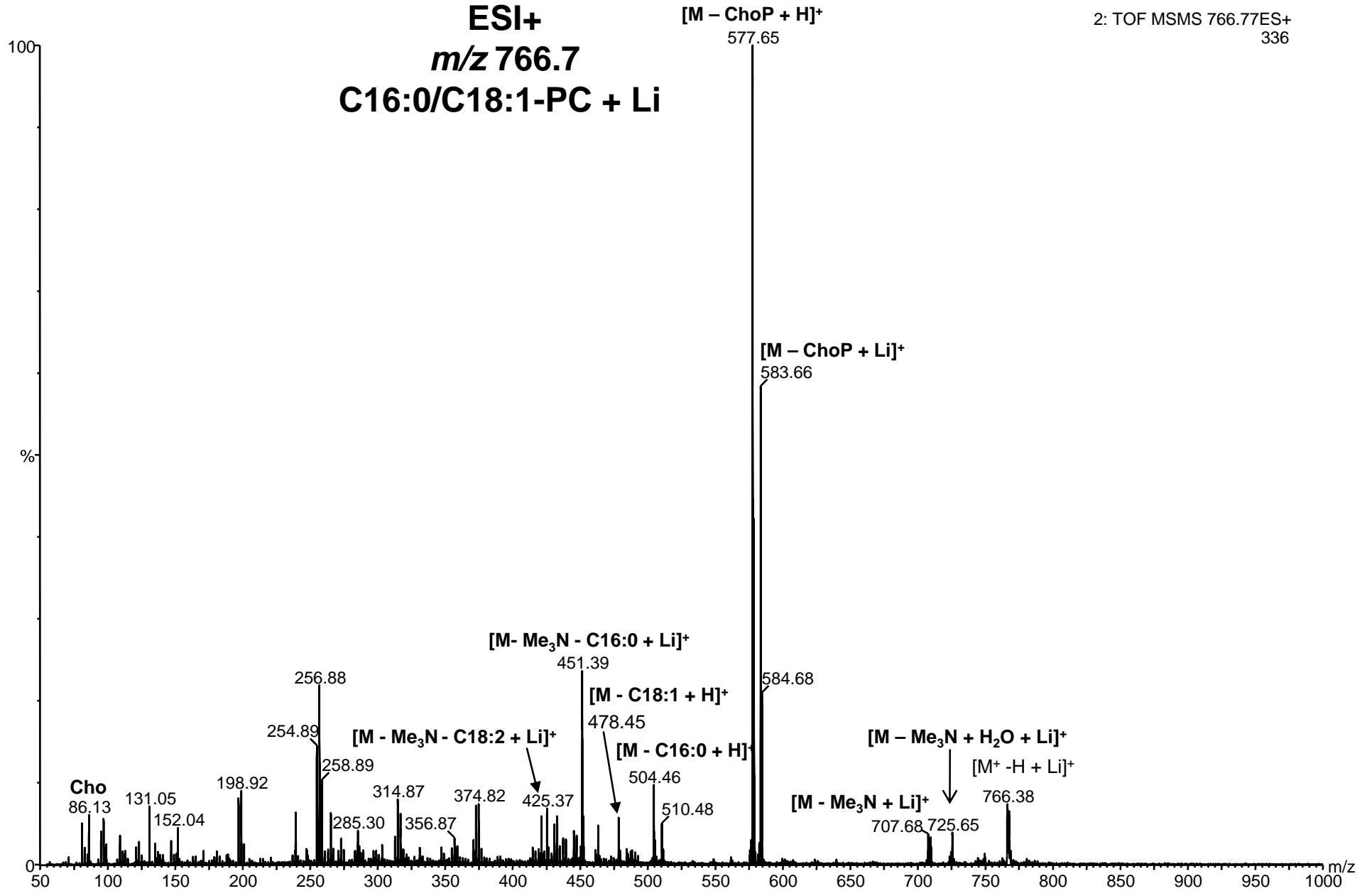
2: TOF MSMS 762.74ES+
554



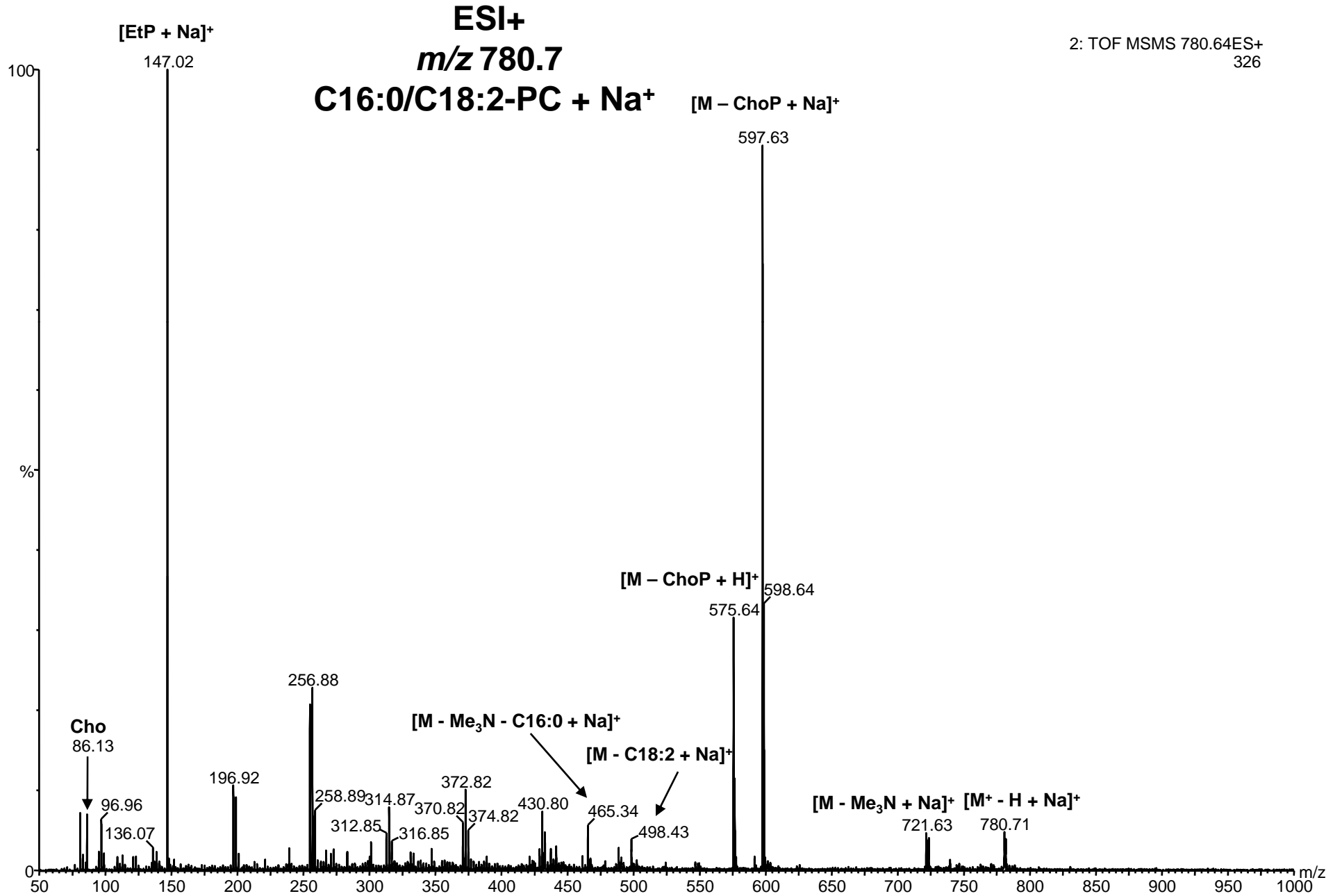
Supplemental Figure 1I



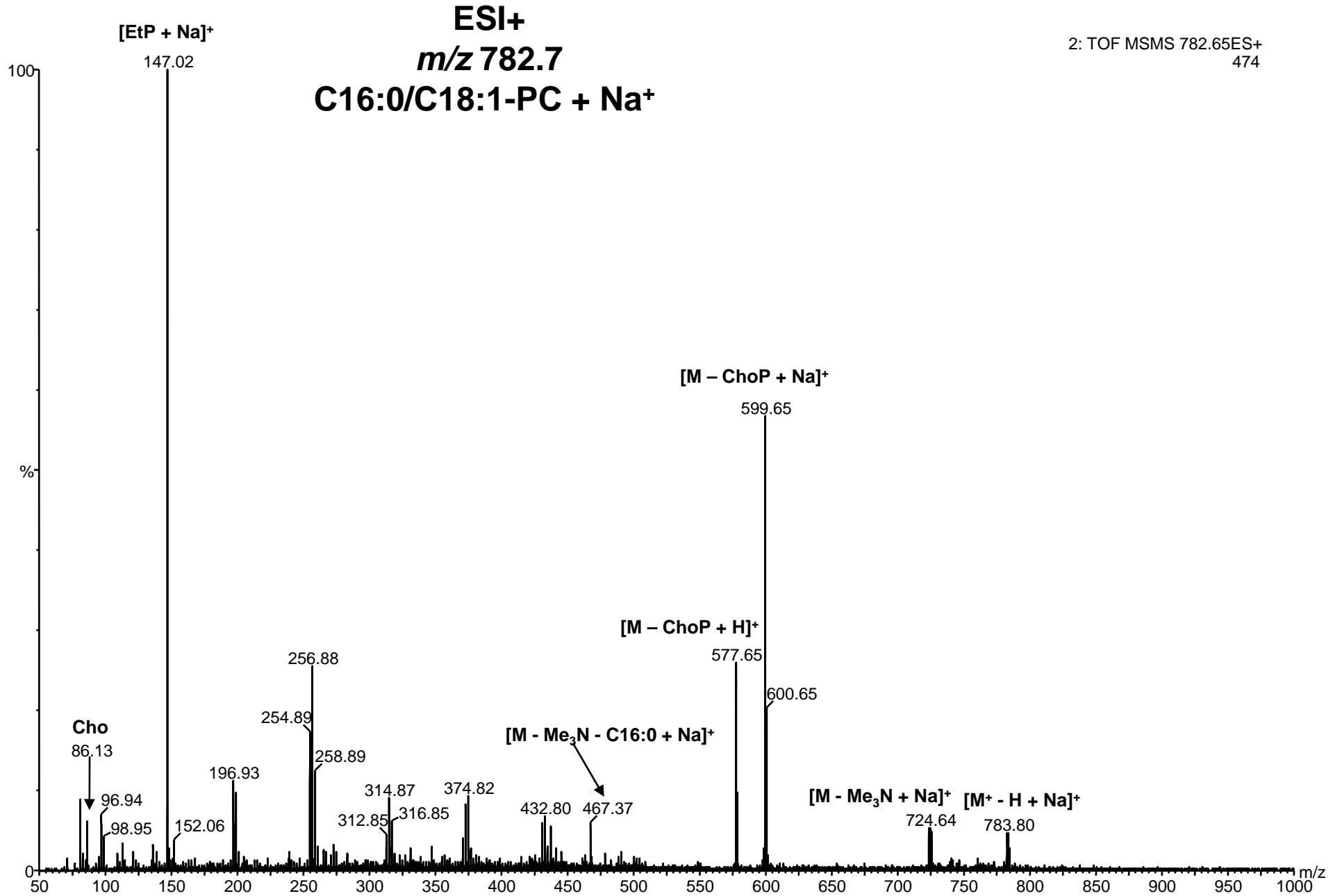
Supplemental Figure 1J



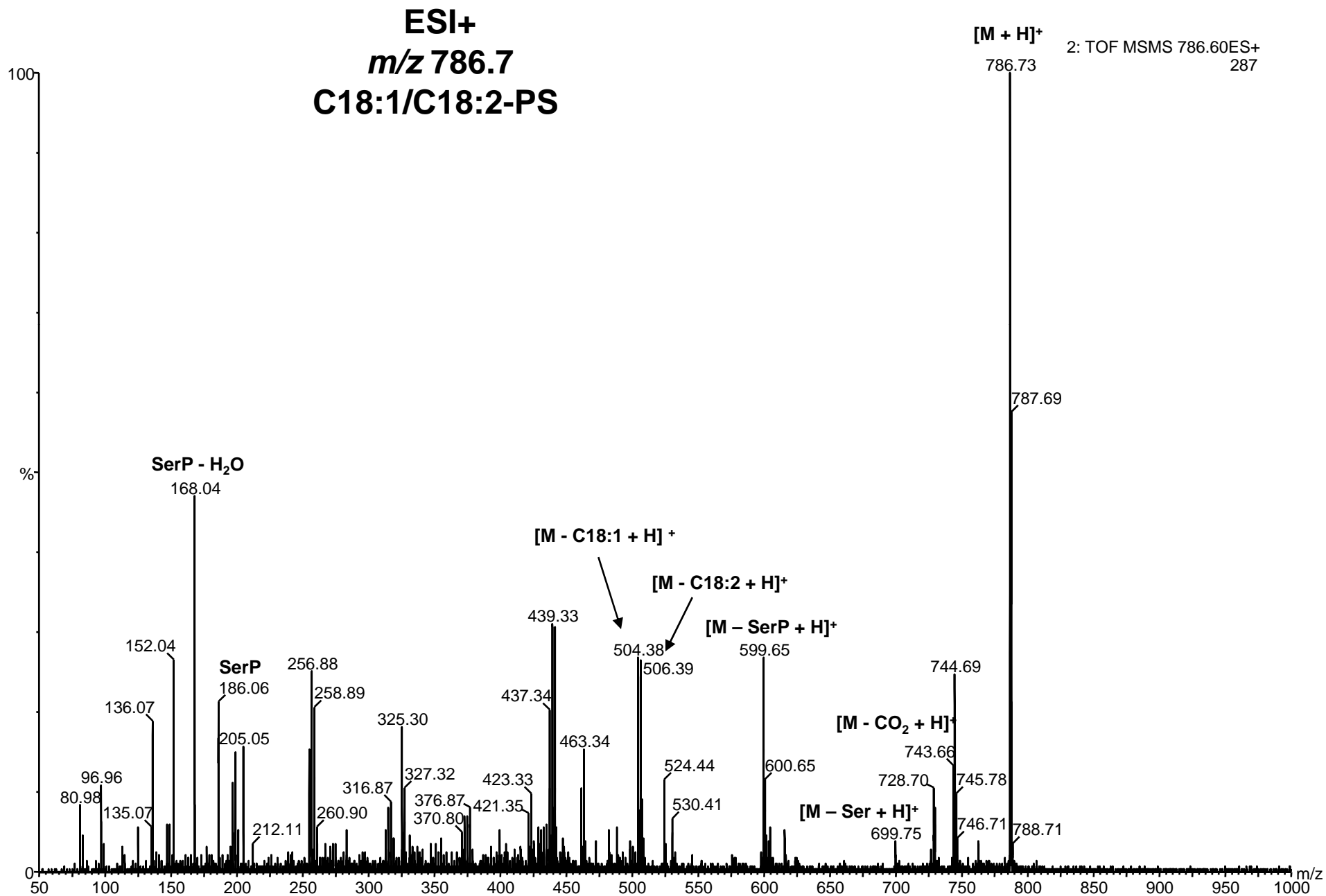
Supplemental Figure 1K



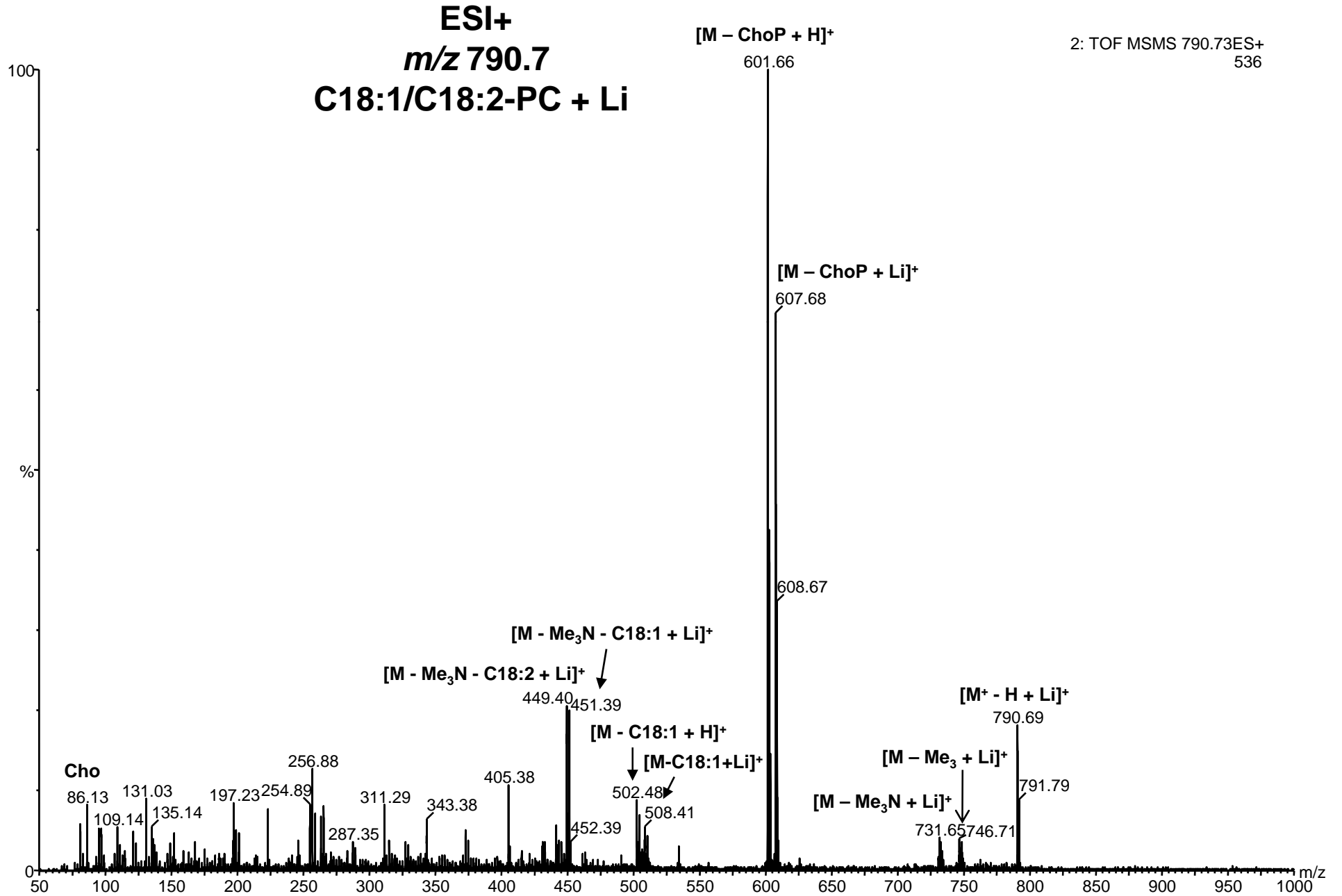
Supplemental Figure 1L



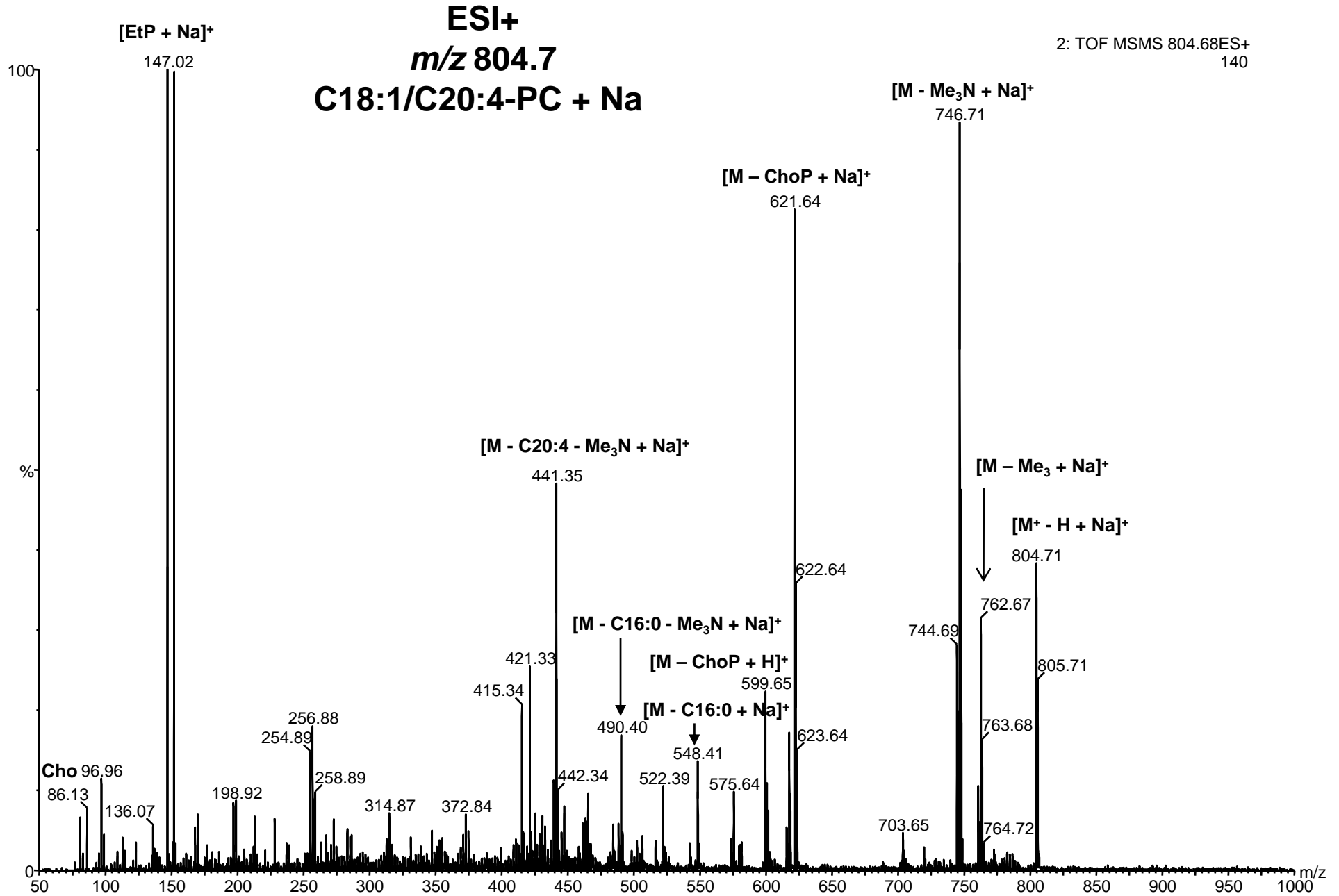
Supplemental Figure 1M



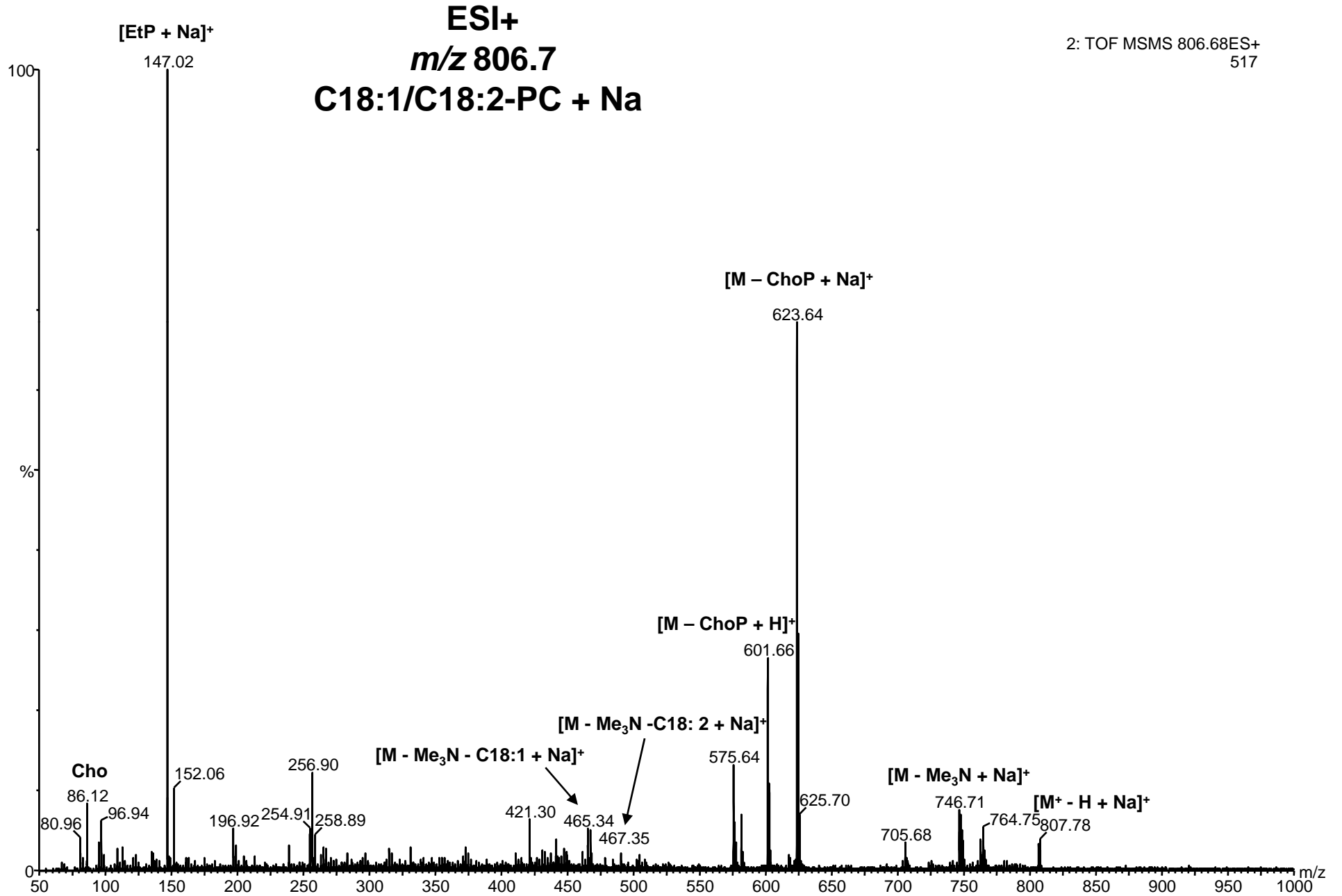
Supplemental Figure 1N



Supplemental Figure 1O



Supplemental Figure 1P



Supplemental Figure 1Q

ESI+
***m/z* 808.7**
C18:1/C18:1-PC + Na

2: TOF MSMS 808.75ES+
541

