

Online Supplementary Materials (Ma. et al)

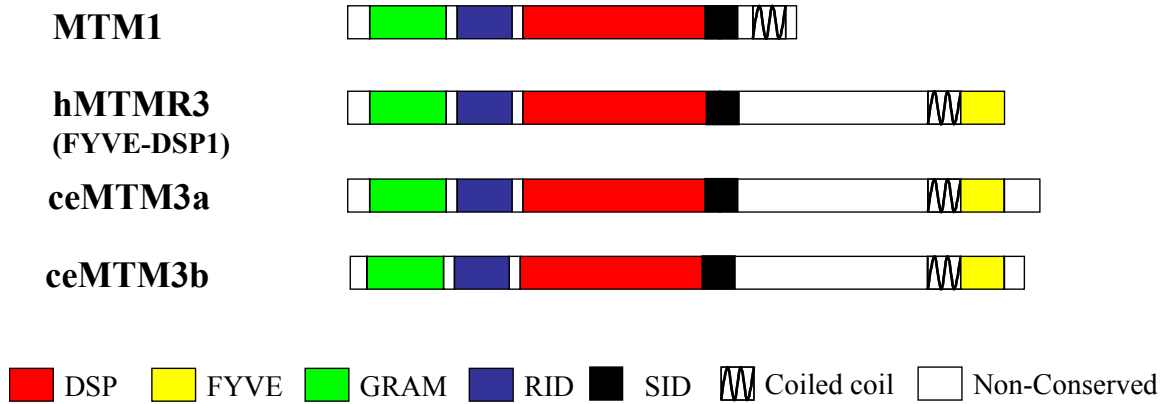


Fig. S1. Schematic sequence alignment of human MTM1, human MTMR3 (FYVE-DSP1) and ceMTM3.

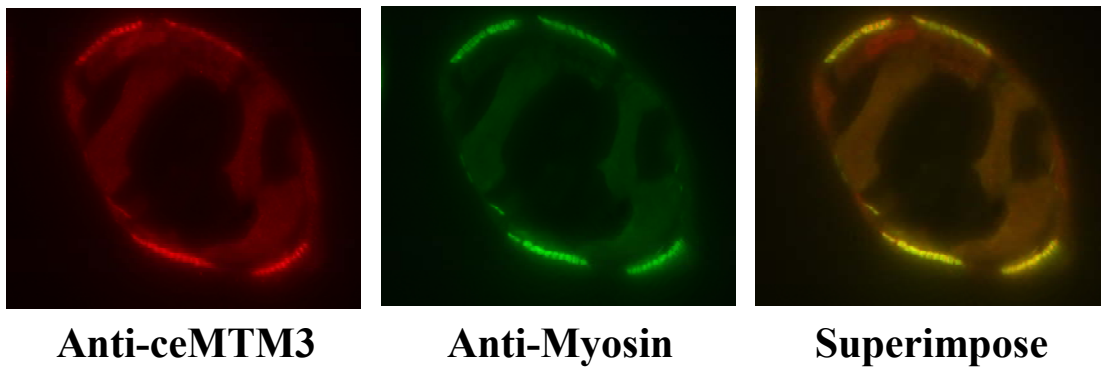


Fig. S2. Confirmation of ceMTM3 distribution in the body muscle of *C. elegans*. Paraffin-embedded cross sections of adult *C. elegans* were subjected to indirect immunofluorescent staining with anti-ceMTM3 (red) and muscle marker anti-myosin (green).