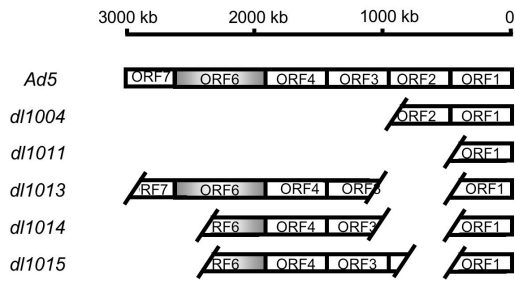
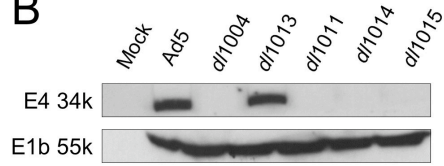
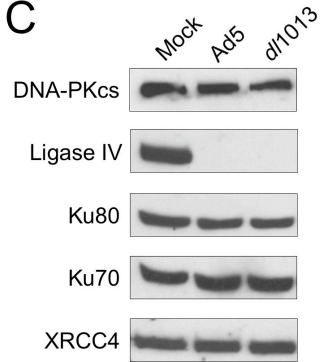
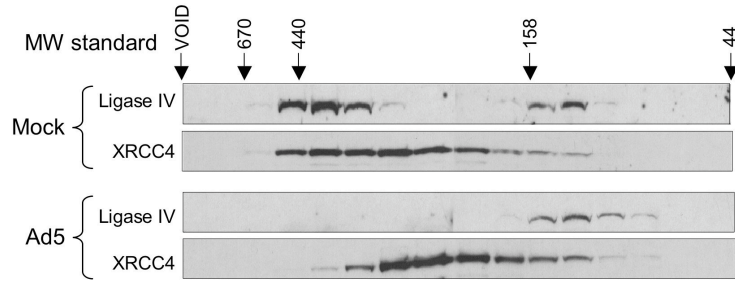
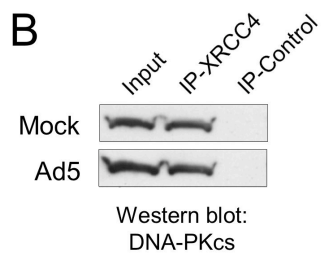


Supplemental Figure S1. **(A)** E4 deletion mutants used in this study. *White spaces* denote deletions. Only complete ORFs are expressed. All other adenoviral genes are intact. **(B)** Expression of E1B 55k and E4 34k in HeLa cells. Mini-whole cell extracts (mWCE) were prepared from HeLa cells that had been Mock-, Ad5- or E4-deletion mutant (*dl1004*, *dl1011*, *dl1013*, *dl1014* or *dl1015*) infected. 50 µg of the extract was resolved on SDS-PAGE, subject to Western transfer and probed for E1B 55k and E4 34k as indicated. **(C)** Levels of NHEJ factors were assayed in 50 µg of mWCE prepared from HeLa cells that were Mock-, Ad5- or E4-deletion mutant *dl1013*-infected. Extracts were resolved by SDS-PAGE, subject to Western transfer and individual factors were detected as indicated. All extracts were prepared 16-18 hours post infection (HPI).

Supplemental Figure S2. **(A)** Adenoviral infection results in degradation of ligase IV and reduced size of XRCC4-containing complexes. 293 cells were either Mock- (top) or Ad5-infected (bottom) for 48 hours. Mini-whole cell extracts were prepared and KCl was adjusted to 0.5 M. 0.5 mg of extract was fractionated over Superdex 200, 0.6 mL fractions were collected, precipitated with TCA, resolved on SDS-PAGE, subject to Western transfer and probed for Ligase IV or XRCC4, as indicated. **(B)** XRCC4-DNA-PKcs interactions were not changed by adenovirus infection. HeLa cells were either Mock- or Ad5-infected for 20 hours. Cells were lysed in NP40 lysis buffer and XRCC4 was immunoprecipitated from 200 µg of extract as described in Materials and Methods. 10% of the input extract (Input) and XRCC4-containing complexes (IP-XRCC4) were resolved on SDS-PAGE, subject to Western transfer and probed for DNA-PKcs.

A**B****C**

Jayaram et al., 2008
Supplemental Figure S1

A**B**

Jayaram et al., 2008
Supplemental Figure S2