

Supporting Information

Blackburn *et al.* 10.1073/pnas.0801497105

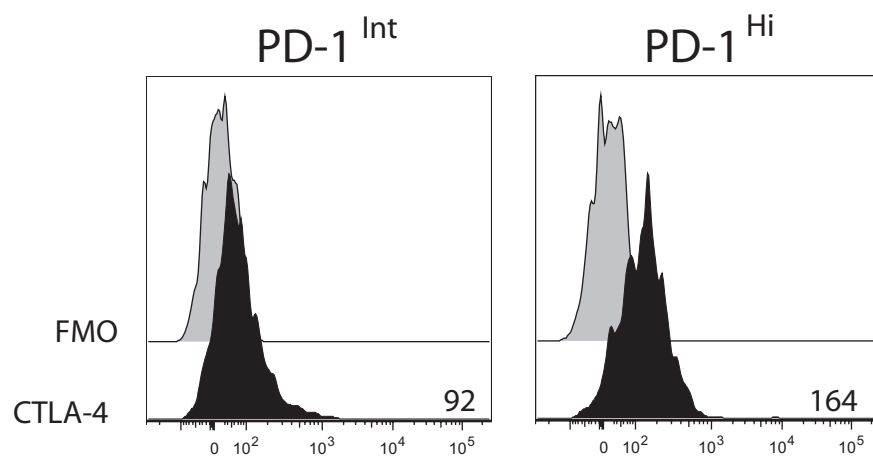


Fig. S1. CTLA-4 is more highly expressed on PD-1^{Hi} CD8 T cells than on PD-1^{Int/Lo} CD8 T cells. DbGP33-specific CD8 T cells from clone 13-infected mice (day 30 after infection) were costained with anti-PD-1 and anti-CTLA-4 and examined by flow cytometry. Numbers indicate mean fluorescence intensity.