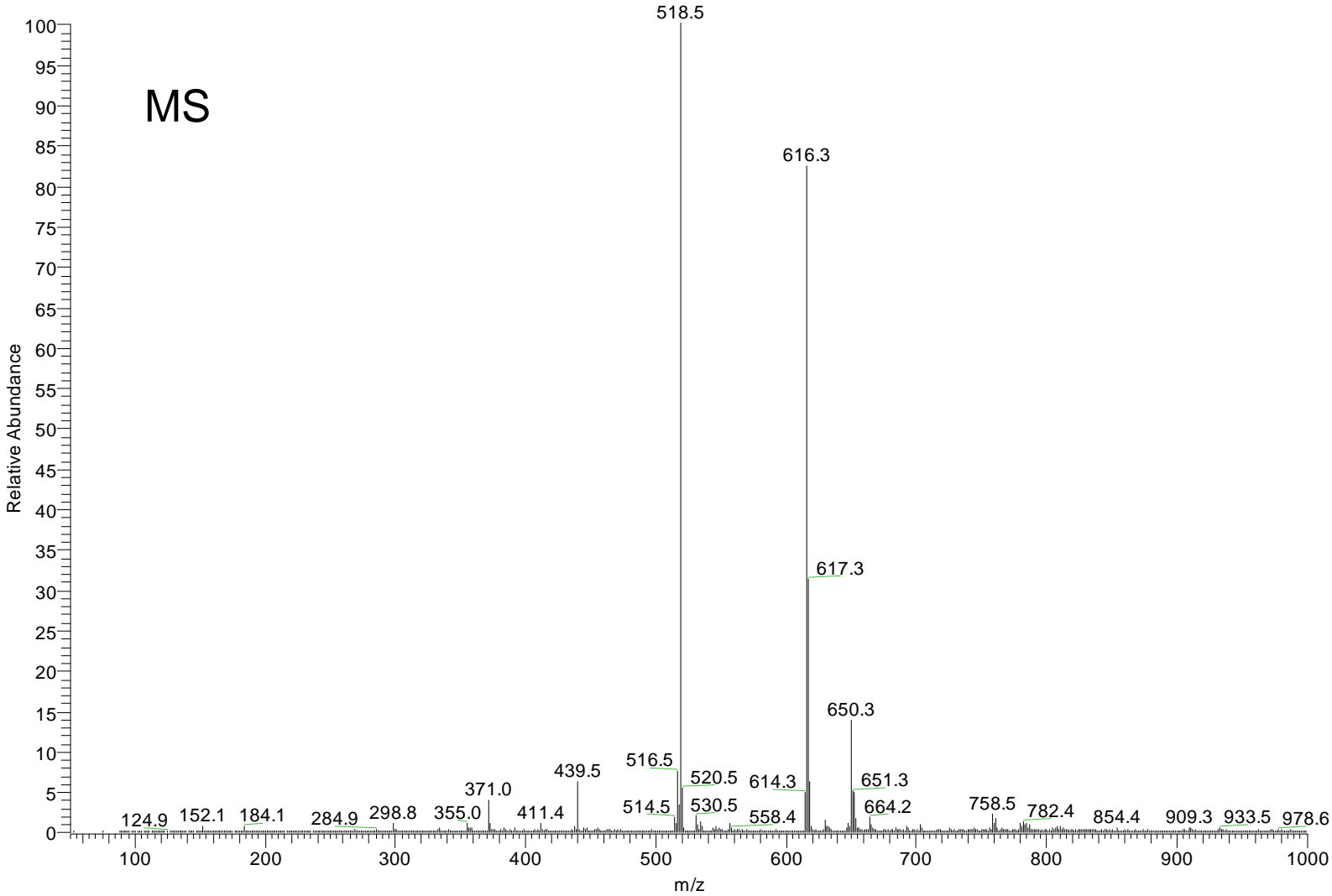


**Fig. S11a**

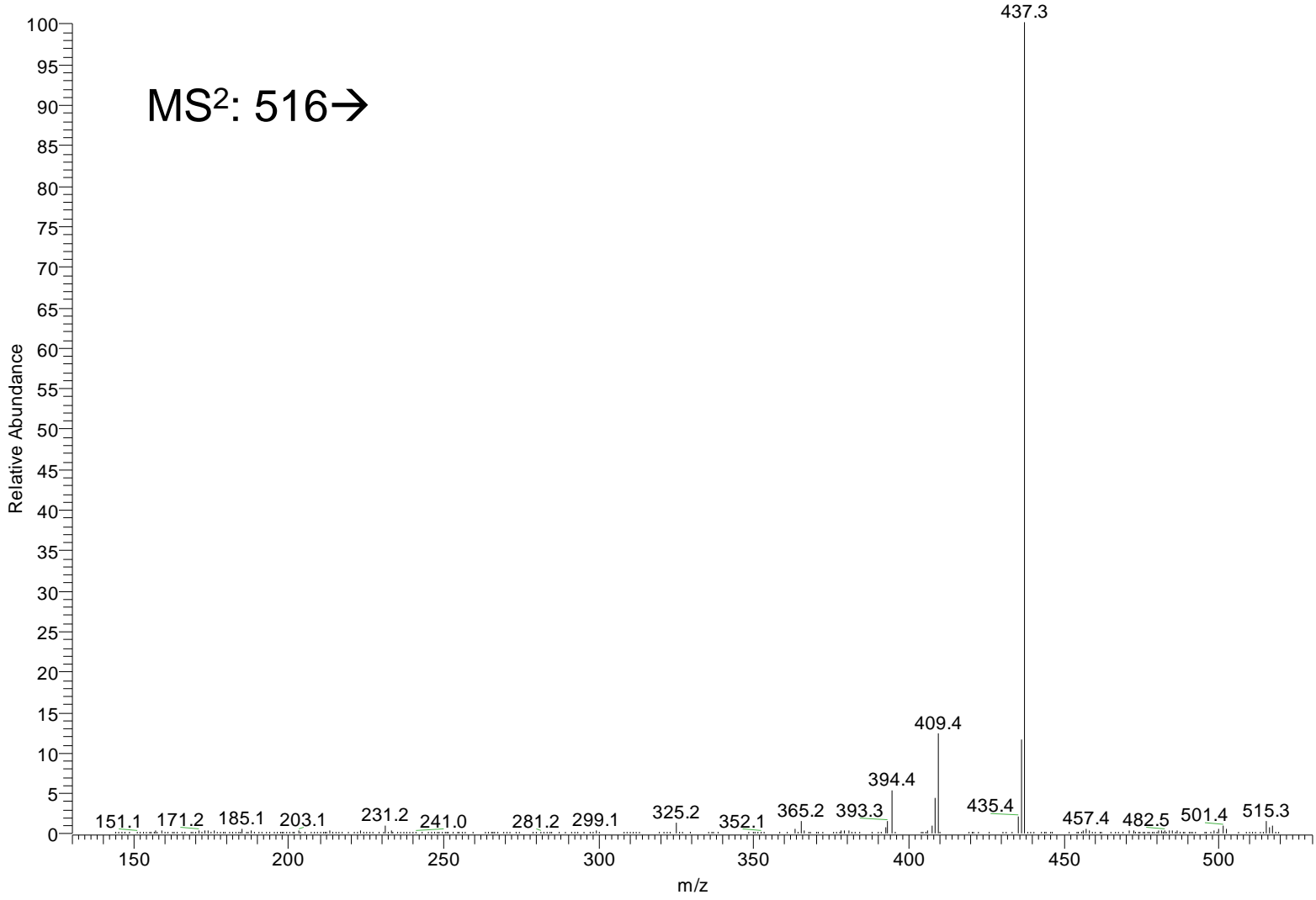
BS\_FR2\_02 #1-264 RT: 0.00-4.90 AV: 53 NL: 6.42E7  
F: + c NSI Full ms [50.00-1000.00]



**Fig. S11b**

**C<sup>4,7</sup>-3-one 3-GP / C<sup>4,8</sup>-3-one 3-GP**

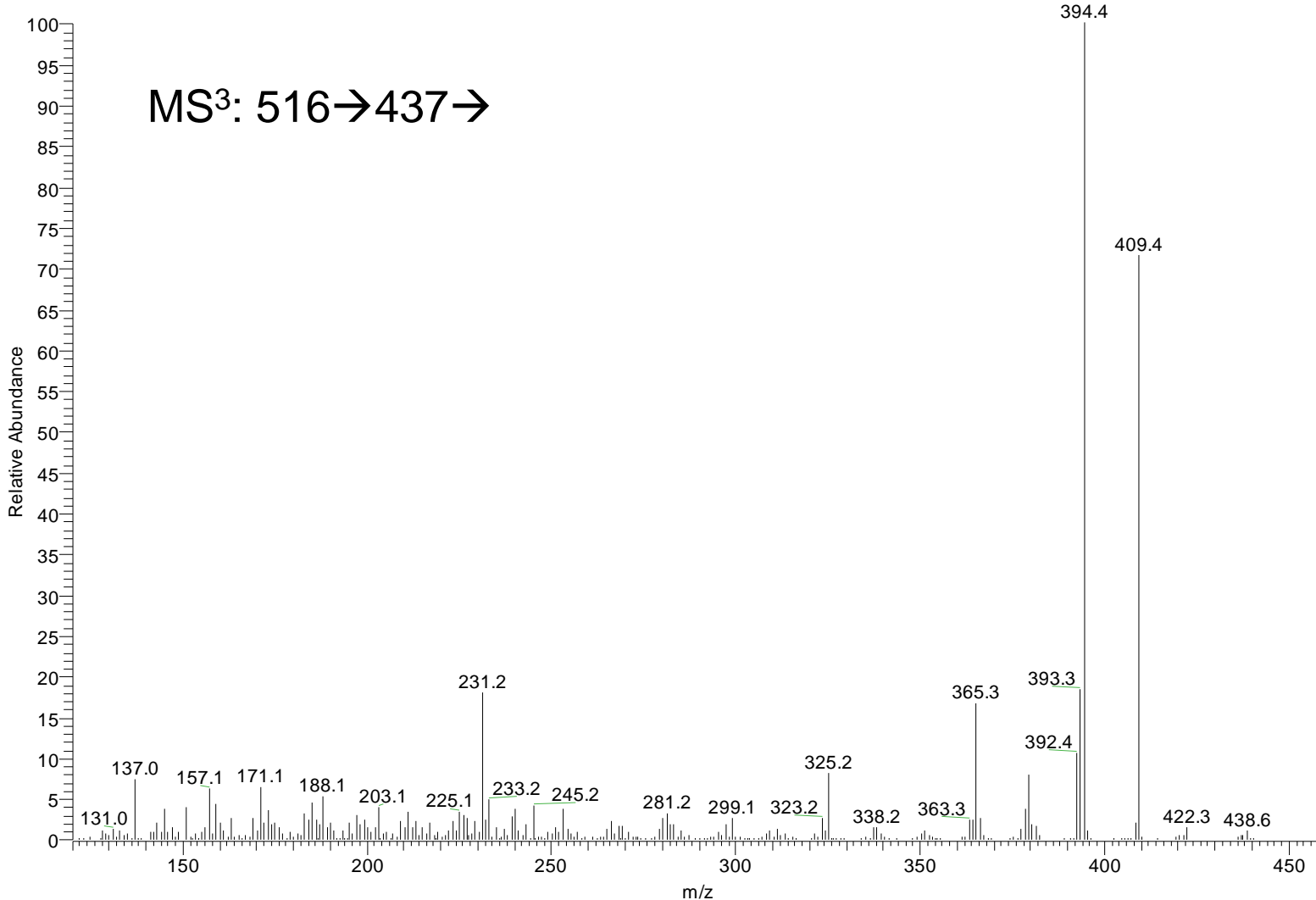
BS\_FR2\_02 #15-270 RT: 0.29-5.00 AV: 12 NL: 4.99E6  
F: + c d Full ms2 516.10@45.00 [ 130.00-530.00]



**Fig. S11c**

**C<sup>4,7</sup>-3-one 3-GP / C<sup>4,8</sup>-3-one 3-GP**

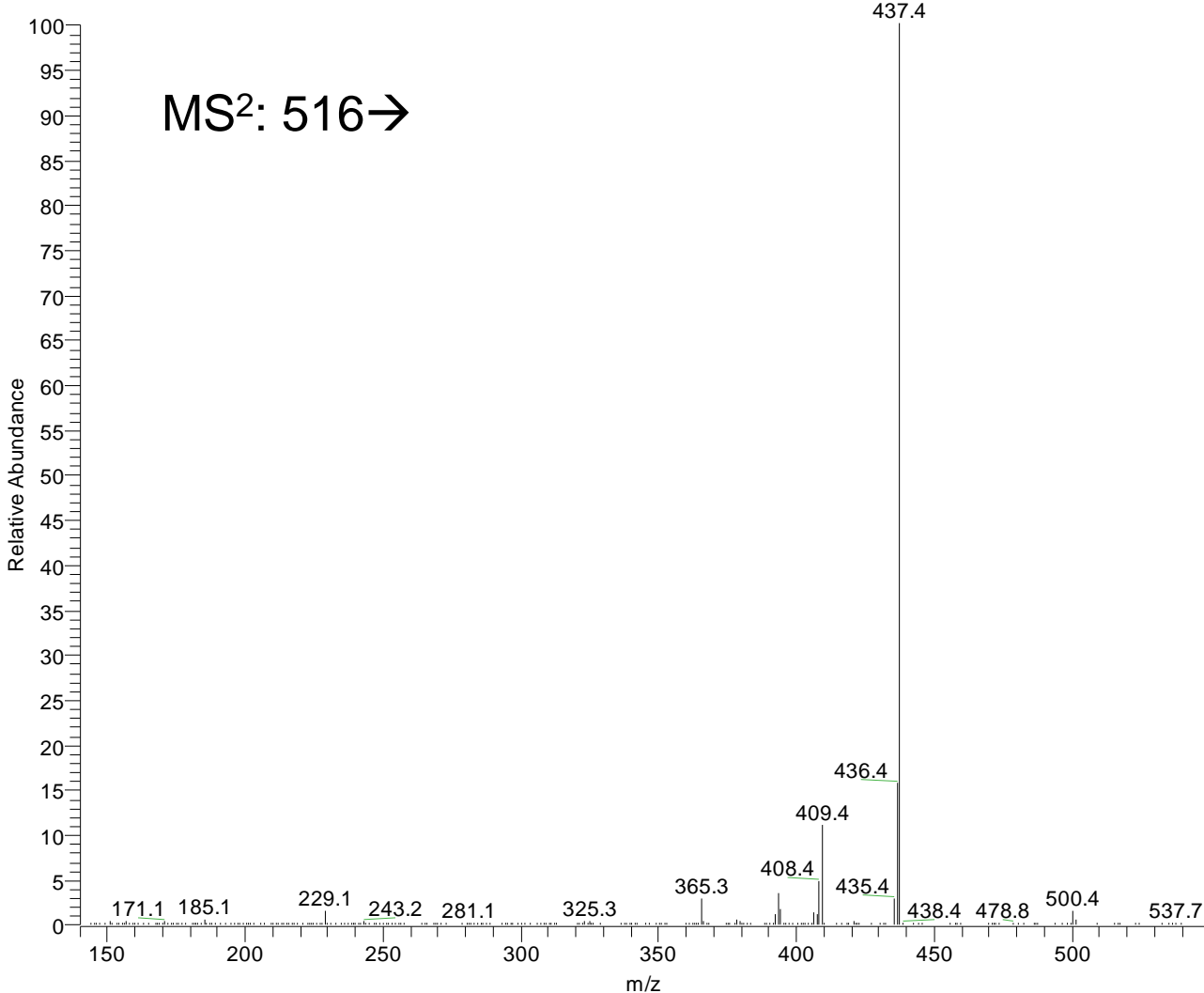
BS\_FR2\_02 #18-270 RT: 0.34-5.06 AV: 51 NL: 6.02E5  
F: + c NSI Full ms3 516.10@45.00 437.10@45.00 [ 120.00-1000.00]



**Fig. S11d**

**C<sup>4,7</sup>-3-one 3-GP**

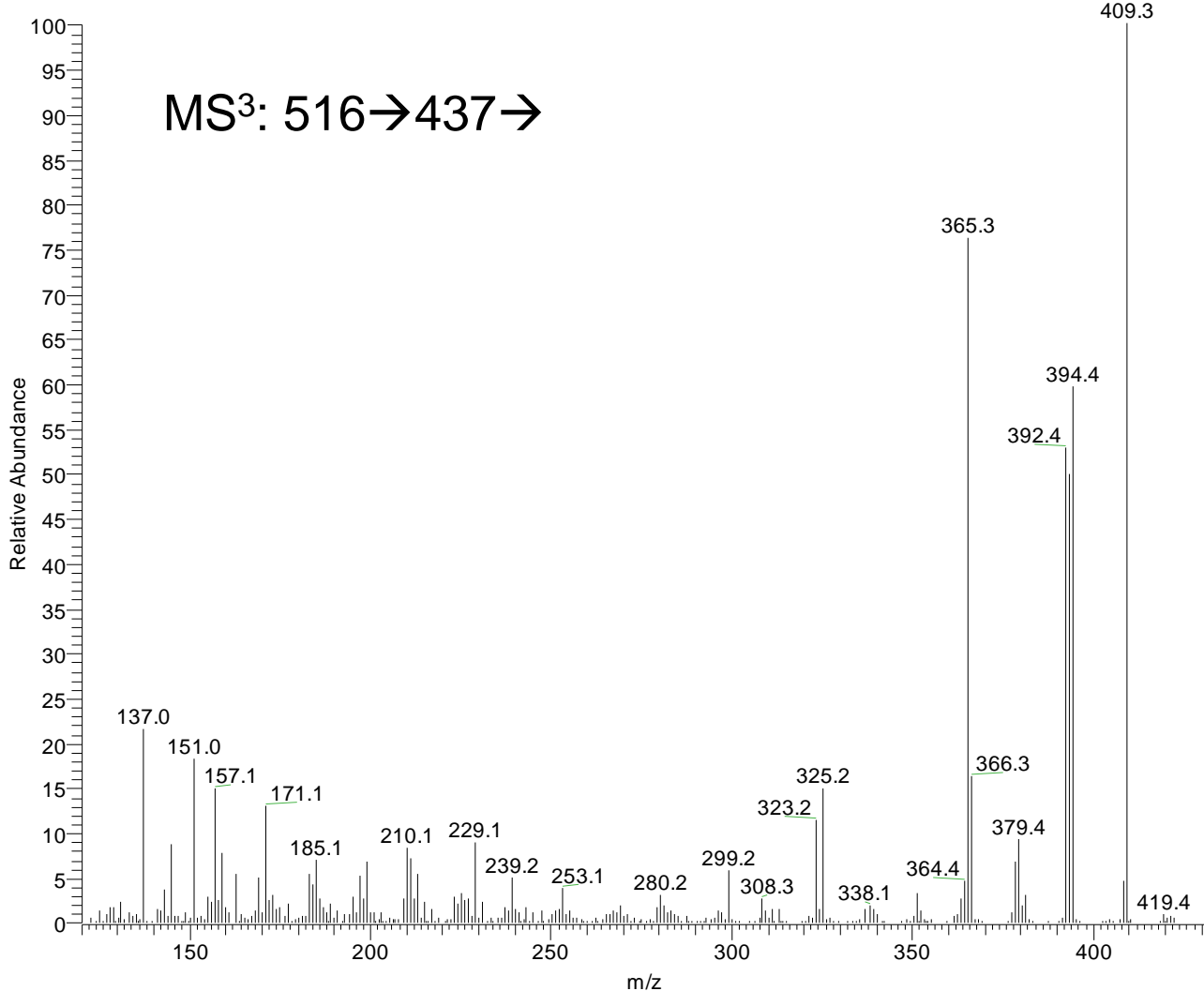
7dehydrocholesterol 01 #174-190 RT: 1.28-1.44 AV: 13 NL: 4.52E7  
F: + c Full ms2 516.10@45.00 [140.00-600.00]



**Fig. S11e**

**C<sup>4,7</sup>-3-one 3-GP**

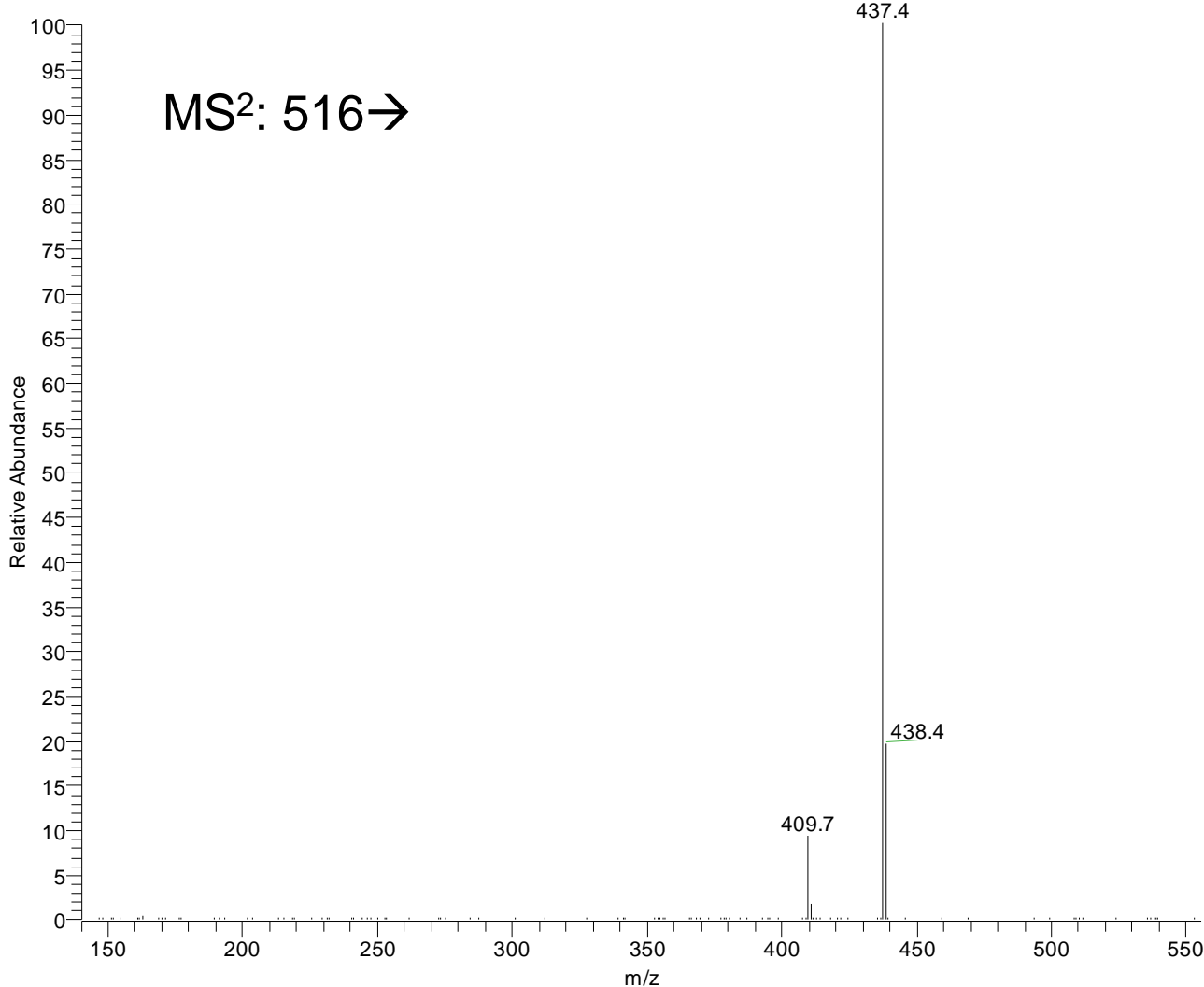
7dehydrocholesterol 01 #187-241 RT: 1.46-2.16 AV: 43 NL: 3.88E6  
F: + c Full ms3 516.10@45.00 437.10@45.00 [ 120.00-600.00]



**Fig. S11f**

C<sup>4,24</sup>-3-one 3-GP

DESMOSTEROL02 #23-245 RT: 0.49-5.64 AV: 10 NL: 2.56E6  
F: + c Full ms2 516.10@45.00 [140.00-600.00]



**Fig. S11g**

**C<sup>4,24</sup>-3-one 3-GP**

DESMOSTEROL02 #40-536 RT: 0.82-5.34 AV: 192 NL: 1.71E5  
F: + c Full ms3 516.10@45.00 437.10@45.00 [ 120.00-600.00]

