

Fig. S4a

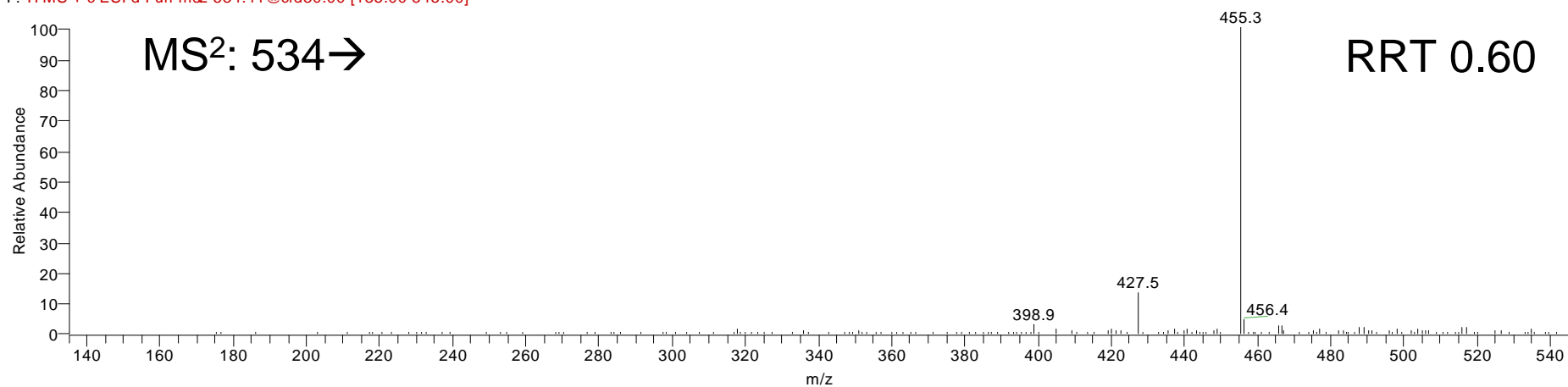
C⁴-24S-ol-3-one 3-GP

Sample_502673_2_12

27/07/2007 16:41:49

sample

Sample_502673_2_12 #797 RT: 7.82 AV: 1 NL: 1.83E3
F: ITMS + c ESI d Full ms2 534.41@cid30.00 [135.00-545.00]



sample_12 #761 RT: 7.58 AV: 1 NL: 3.41E5
F: ITMS + c ESI d Full ms2 534.41@cid30.00 [135.00-545.00]

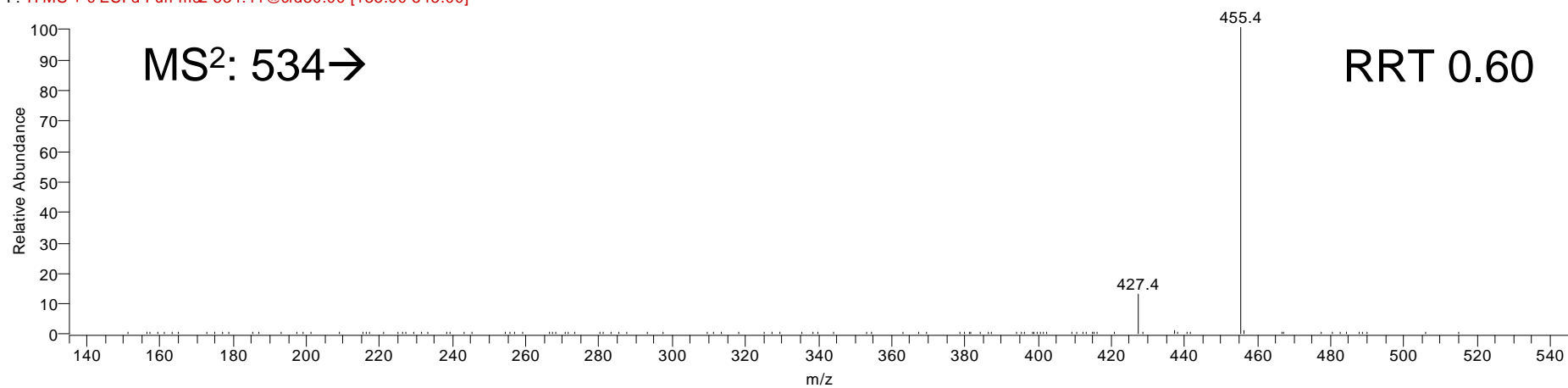


Fig. S4b

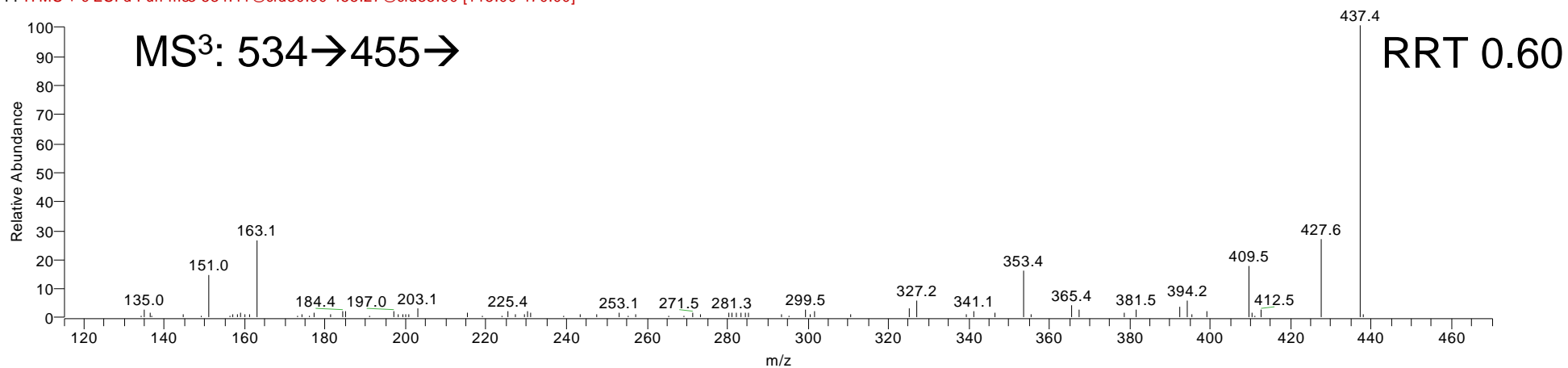
C⁴-24S-ol-3-one 3-GP

Sample_502673_2_12

27/07/2007 16:41:49

sample

Sample_502673_2_12 #798 RT: 7.82 AV: 1 NL: 2.71E2
F: ITMS + c ESI d Full ms3 534.41@cid30.00 455.27@cid35.00 [115.00-470.00]



sample_12 #762 RT: 7.58 AV: 1 NL: 3.58E4
F: ITMS + c ESI d Full ms3 534.41@cid30.00 455.31@cid35.00 [115.00-470.00]

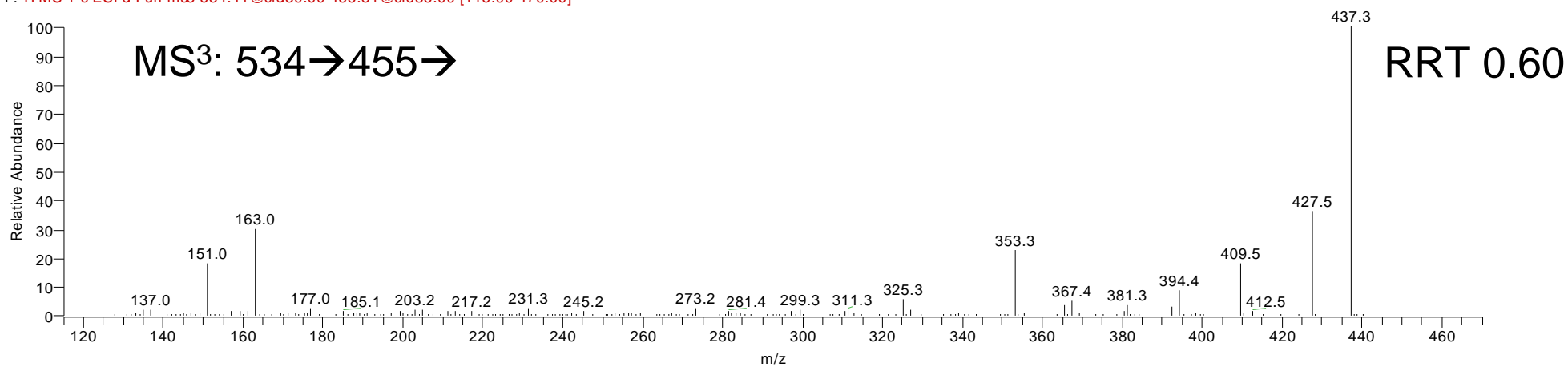


Fig. S4c

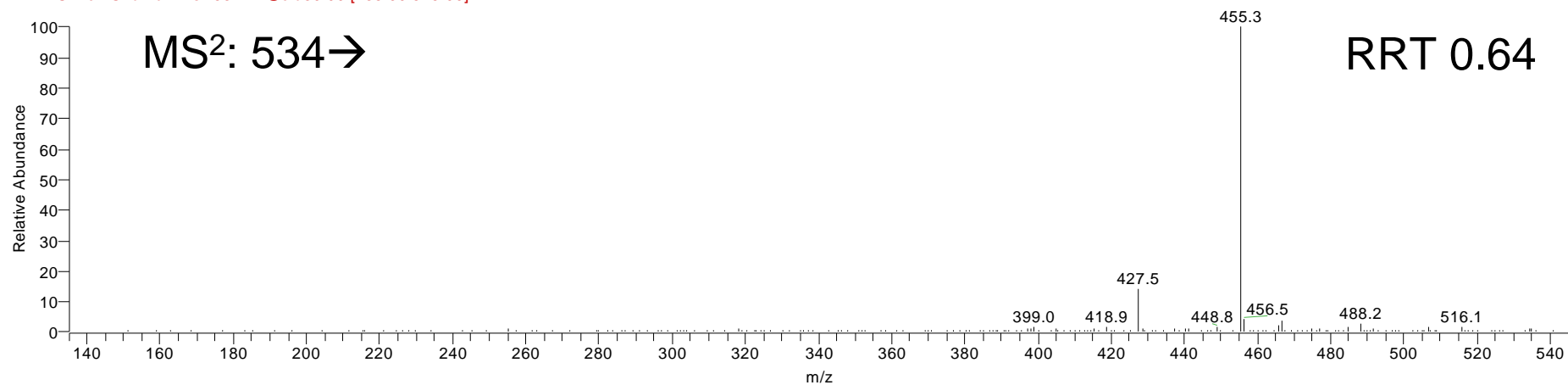
C⁴-27-ol-3-one 3-GP

c:\documents and settings\...\sample_14

28/07/2007 02:38:02

sample

Sample_502673_2_12 #853 RT: 8.33 AV: 1 NL: 2.64E3
F: ITMS + c ESI d Full ms2 534.41@cid30.00 [135.00-545.00]



sample_14 #811 RT: 8.00 AV: 1 NL: 9.57E5
F: ITMS + c ESI d Full ms2 534.41@cid30.00 [135.00-545.00]

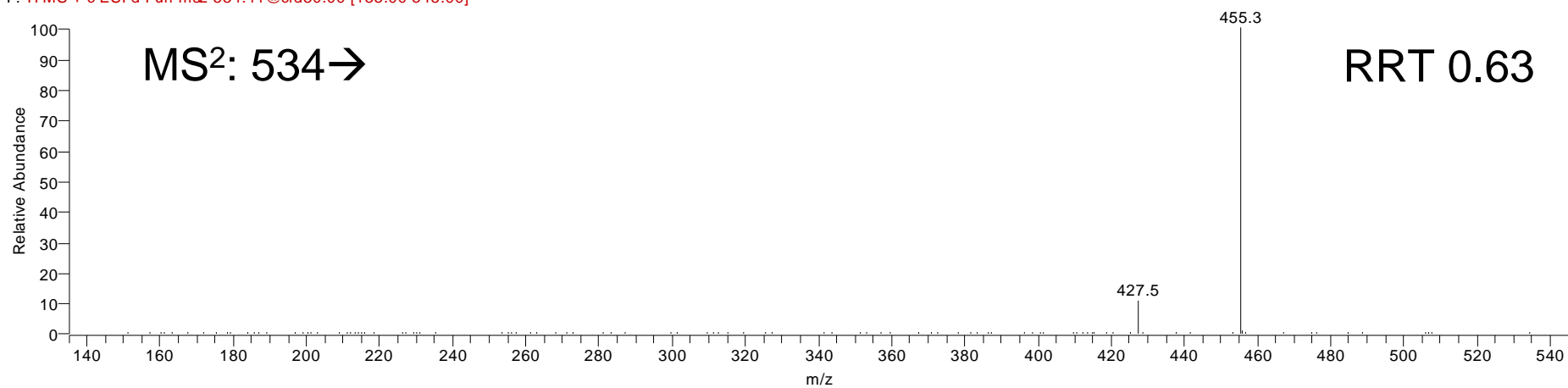


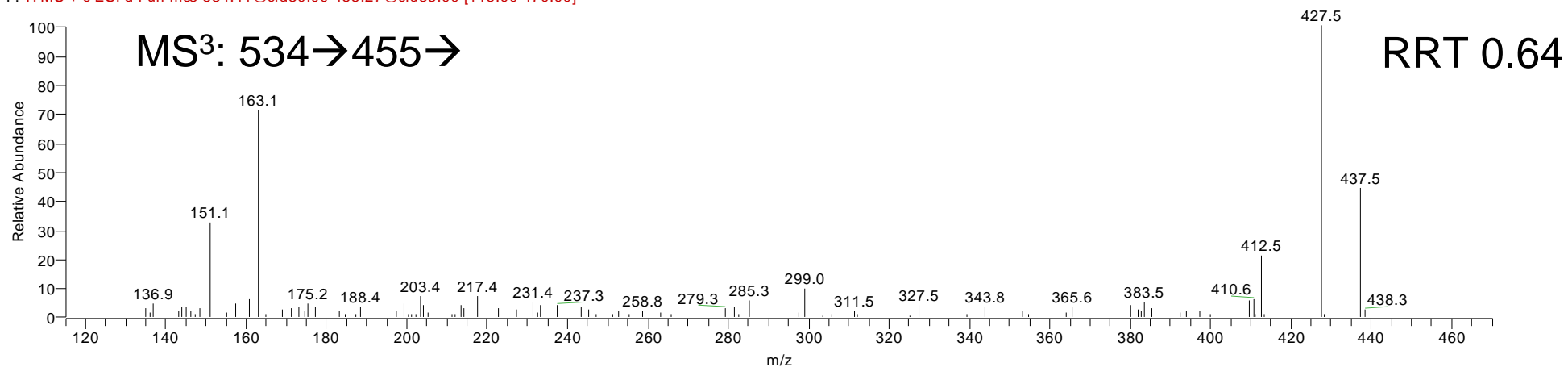
Fig. S4d**C⁴-27-ol-3-one 3-GP**

c:\documents and settings\...\sample_14

28/07/2007 02:38:02

sample

Sample_502673_2_12 #854 RT: 8.34 AV: 1 NL: 1.67E2
F: ITMS + c ESI d Full ms3 534.41@cid30.00 455.27@cid35.00 [115.00-470.00]



sample_14 #812 RT: 8.00 AV: 1 NL: 7.54E4
F: ITMS + c ESI d Full ms3 534.40@cid30.00 455.44@cid35.00 [115.00-470.00]

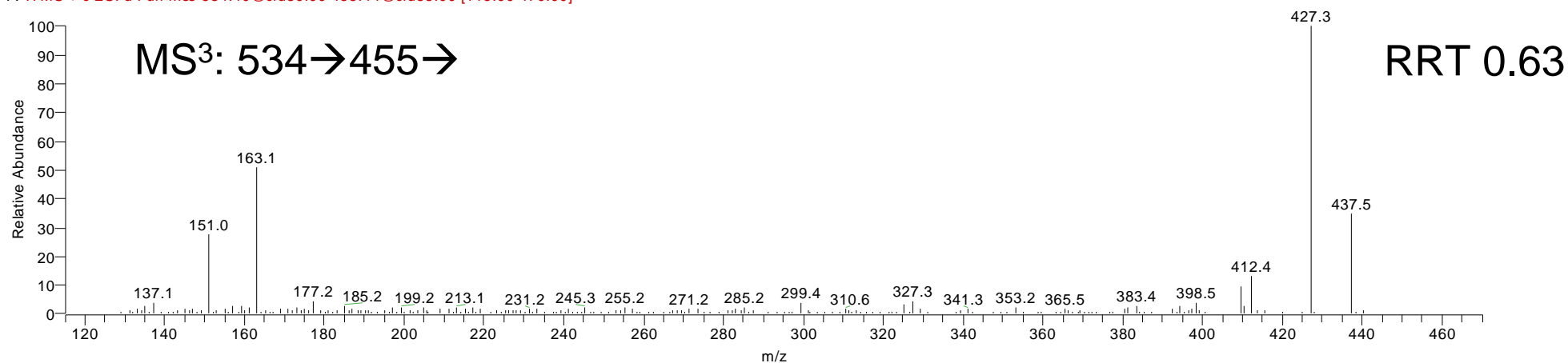


Fig. S4e

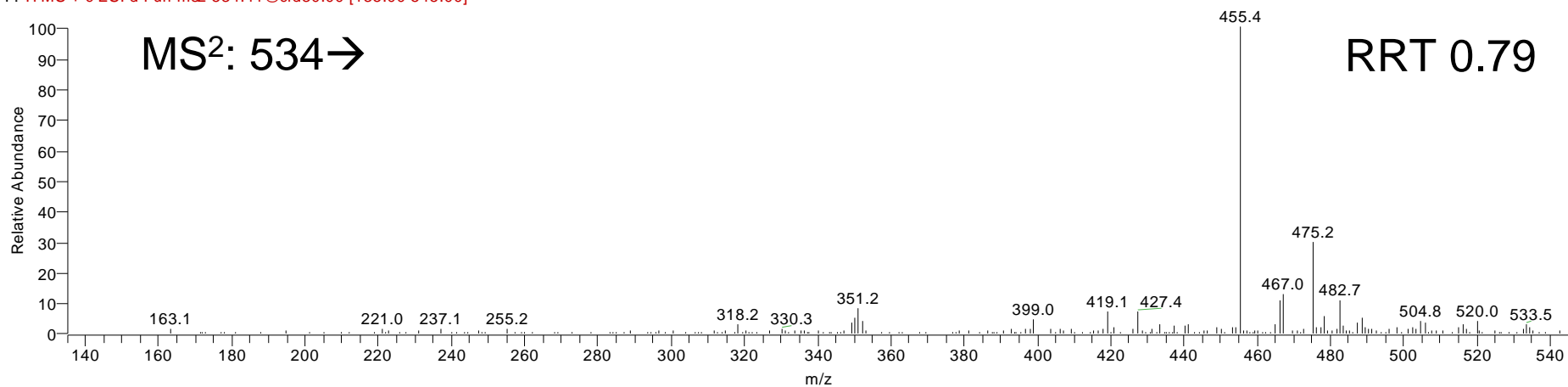
C⁴-7 α -ol-3-one 3-GP

Sample_502673_2_12

27/07/2007 16:41:49

sample

Sample_502673_2_12 #1073 RT: 10.20 AV: 1 NL: 1.01E3
F: ITMS + c ESI d Full ms2 534.41@cid30.00 [135.00-545.00]



sample_20 #1015 RT: 10.06 AV: 1 NL: 2.85E5
F: ITMS + c ESI d Full ms2 534.41@cid30.00 [135.00-545.00]

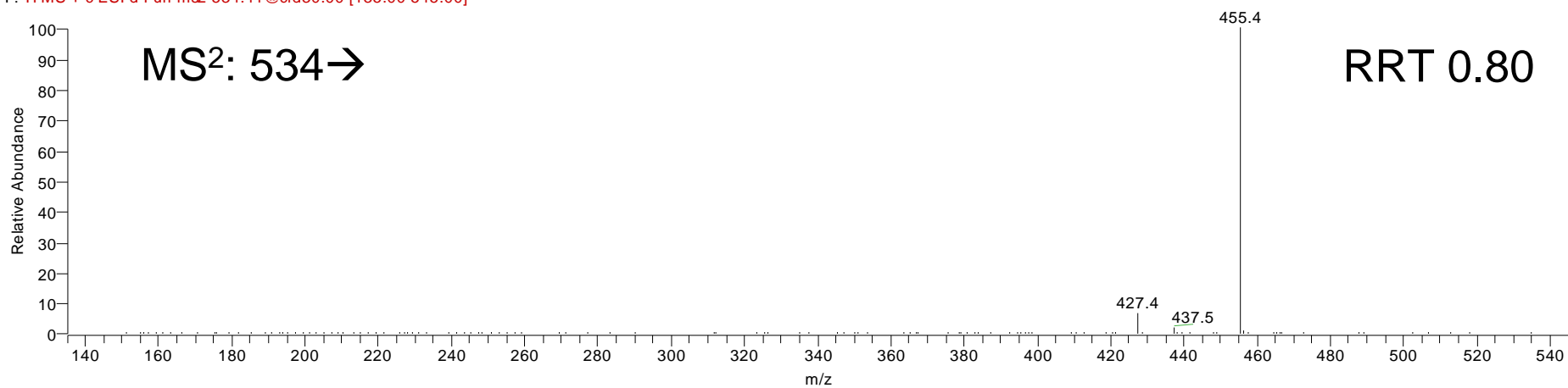


Fig. S4f

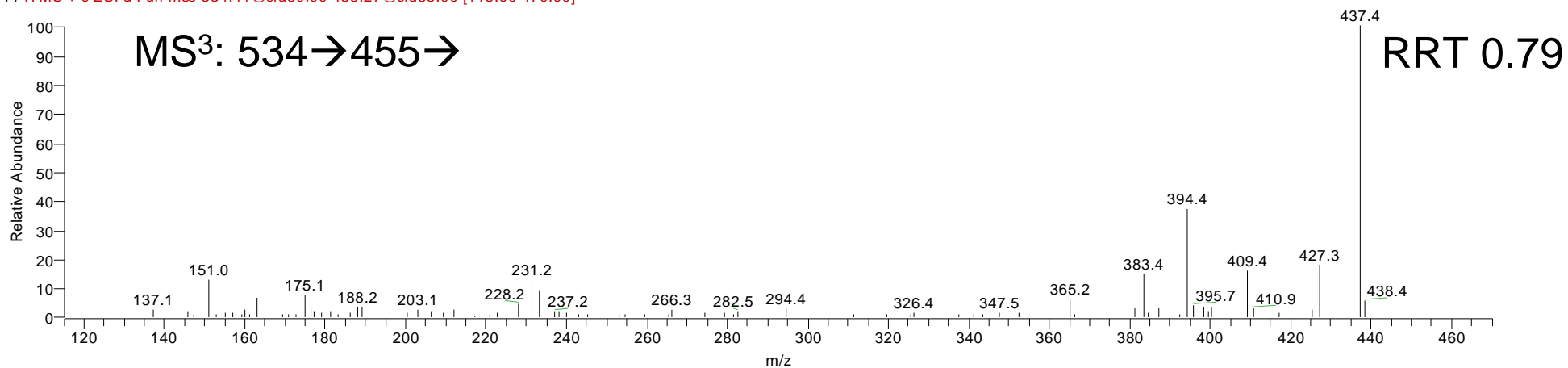
C⁴-7 α -ol-3-one 3-GP

Sample_502673_2_12

27/07/2007 16:41:49

sample

Sample_502673_2_12 #1074 RT: 10.21 AV: 1 NL: 1.39E2
F: ITMS + c ESI d Full ms3 534.41@cid30.00 455.27@cid35.00 [115.00-470.00]



sample_20 #1016 RT: 10.06 AV: 1 NL: 4.06E4
F: ITMS + c ESI d Full ms3 534.41@cid30.00 455.29@cid35.00 [115.00-470.00]

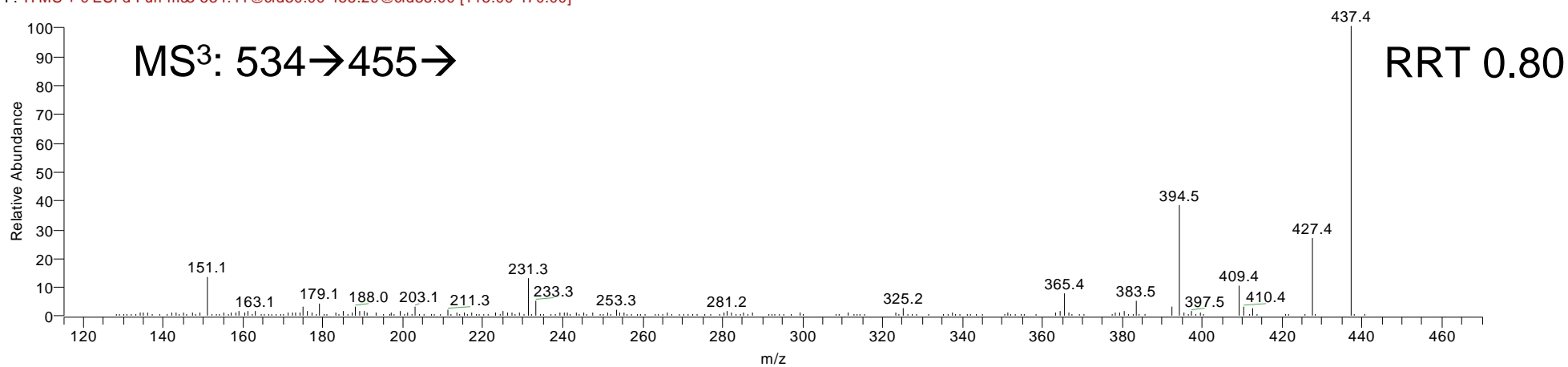


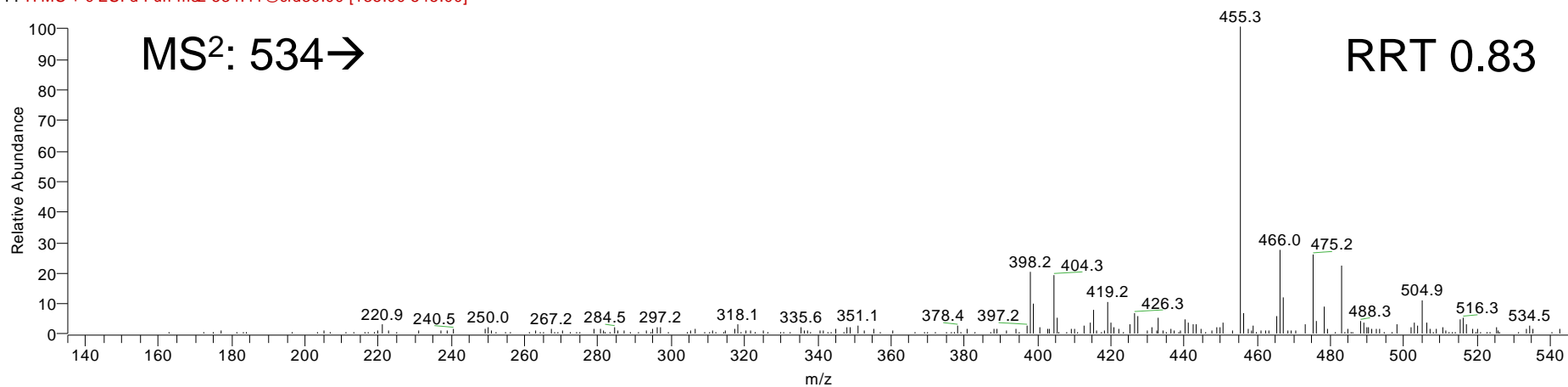
Fig. S4g

C⁴-6β-ol-3-one 3-GP

c:\documents and settings\...\esi_std04

04/05/2006 03:05:04

Sample_502673_2_12 #1136 RT: 10.68 AV: 1 NL: 7.12E2
F: ITMS + c ESI d Full ms2 534.41@cid30.00 [135.00-545.00]



esi_std04 #1236 RT: 10.53 AV: 1 NL: 2.62E6
F: ITMS + c ESI d Full ms2 534.41@cid30.00 [135.00-545.00]

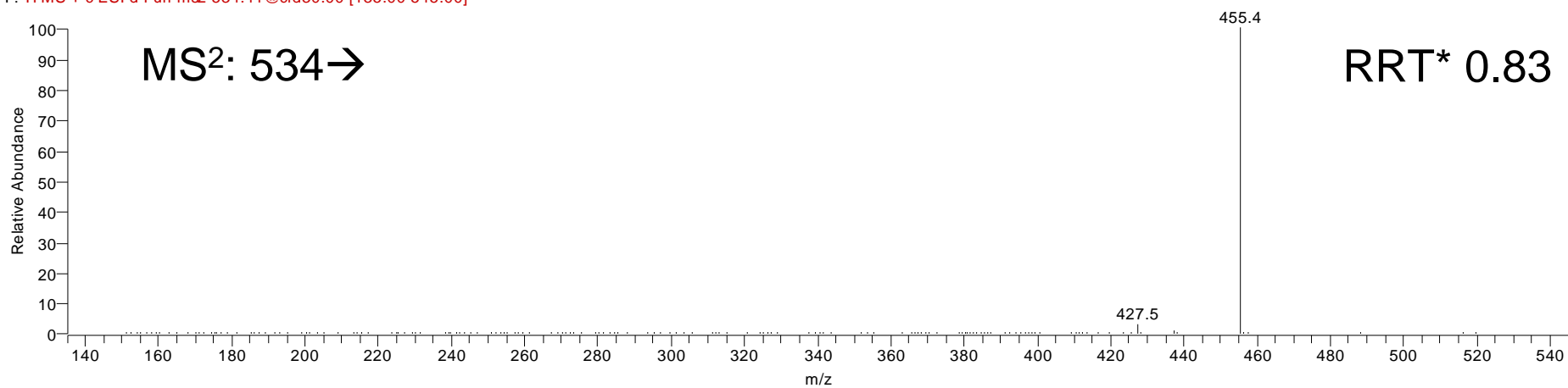


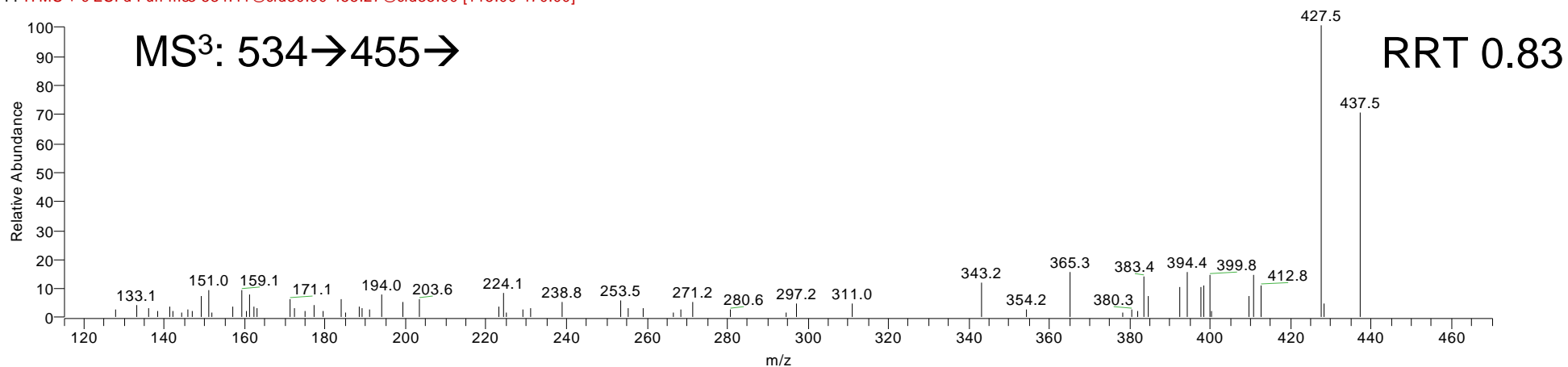
Fig. S4h**C⁴-6 β -ol-3-one 3-GP**

Sample_502673_2_12

27/07/2007 16:41:49

sample

Sample_502673_2_12 #1137 RT: 10.69 AV: 1 NL: 6.61E1
F: ITMS + c ESI d Full ms3 534.41@cid30.00 455.27@cid35.00 [115.00-470.00]



esi_std04 #1237 RT: 10.54 AV: 1 NL: 2.20E5
F: ITMS + c ESI d Full ms3 534.40@cid30.00 455.35@cid30.00 [115.00-470.00]

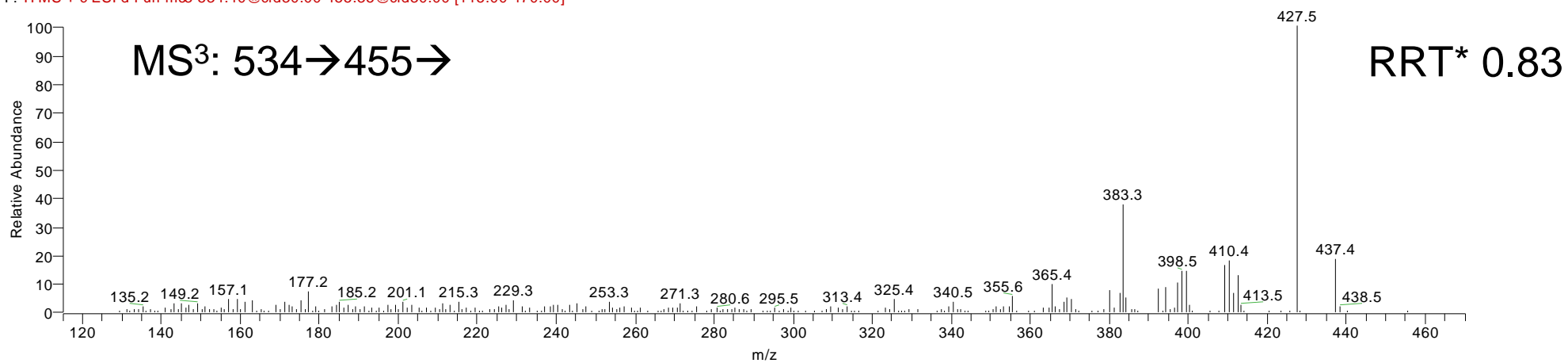
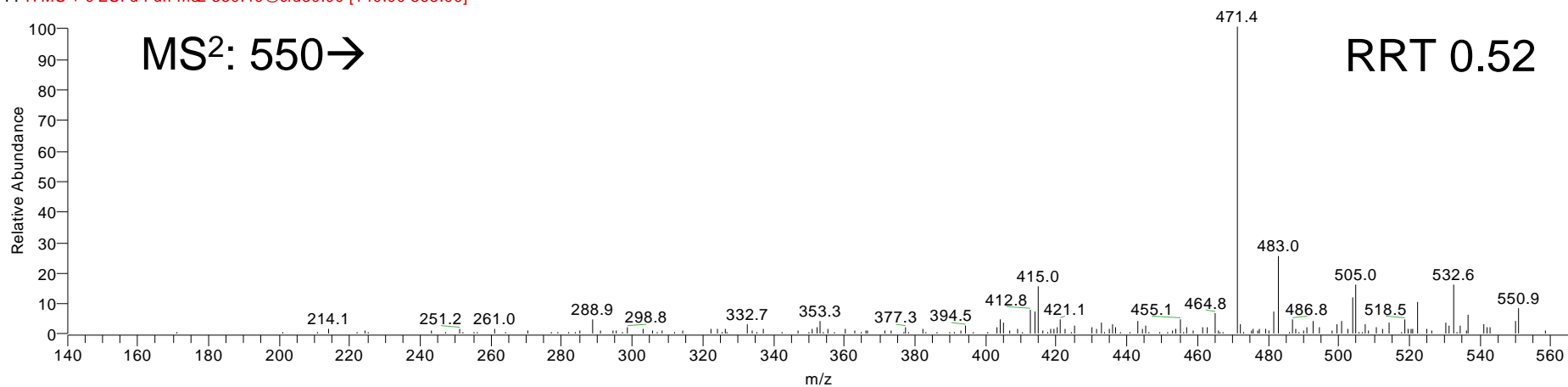


Fig. S4i**C⁴-7 α ,27-diol-3-one 3-GP**

c:\documents and settings\...\26

01/07/2006 09:55:11

Sample_502673_2_12 #689 RT: 6.79 AV: 1 NL: 3.89E2
F: ITMS + c ESI d Full ms2 550.40@cid30.00 [140.00-565.00]



26 #754 RT: 6.34 AV: 1 NL: 8.41E4
F: ITMS + c ESI d Full ms2 550.40@cid35.00 [140.00-565.00]

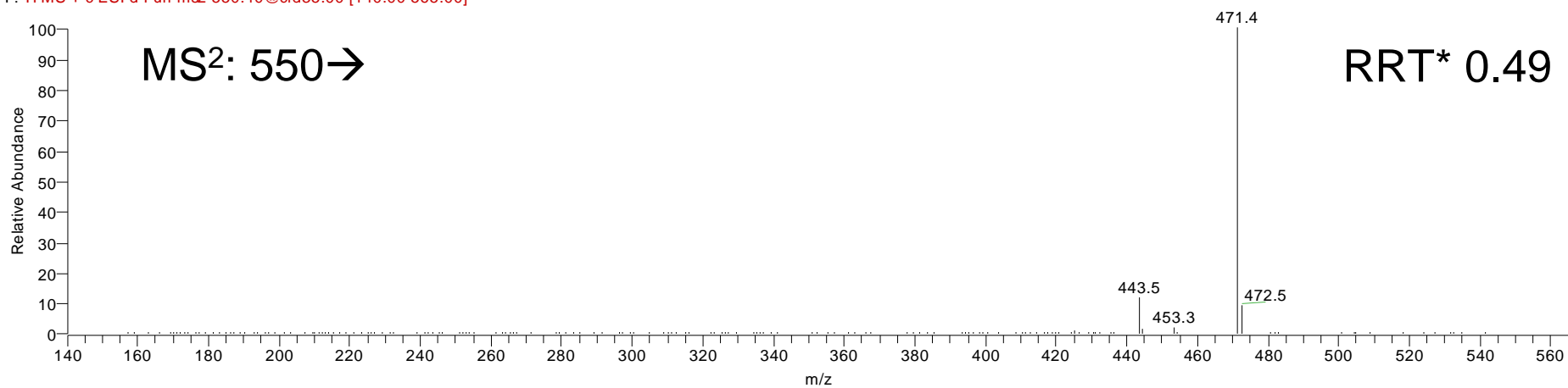


Fig. S4j**C⁴-7 α ,27-diol-3-one 3-GP**

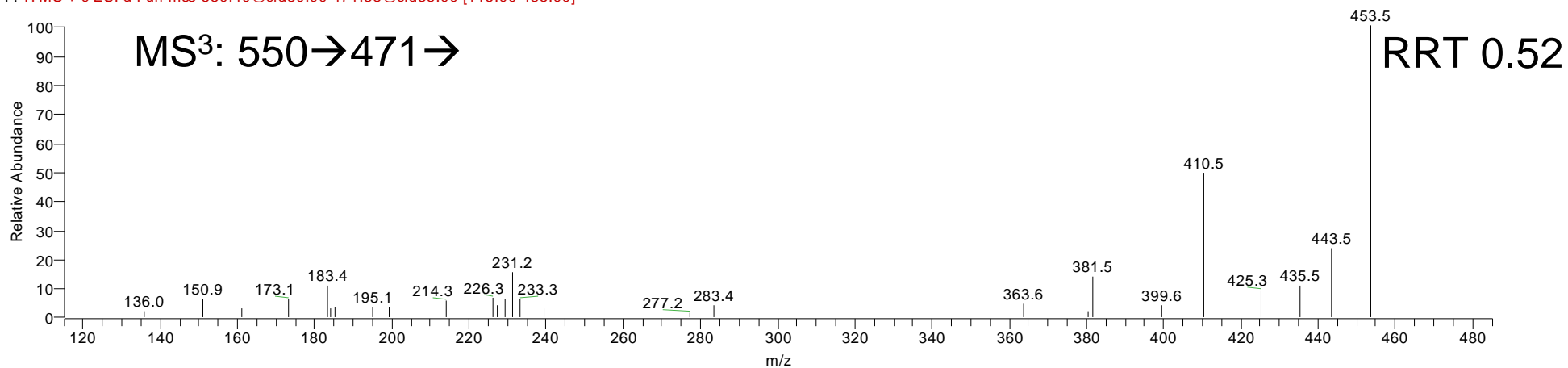
Sample_502673_2_12

27/07/2007 16:41:49

sample

Sample_502673_2_12 #676 RT: 6.67 AV: 1 NL: 5.09E1

F: ITMS + c ESI d Full ms3 550.40@cid30.00 471.38@cid35.00 [115.00-485.00]



26 #755 RT: 6.35 AV: 1 NL: 9.10E3

F: ITMS + c ESI d Full ms3 550.40@cid35.00 471.31@cid35.00 [115.00-485.00]

