

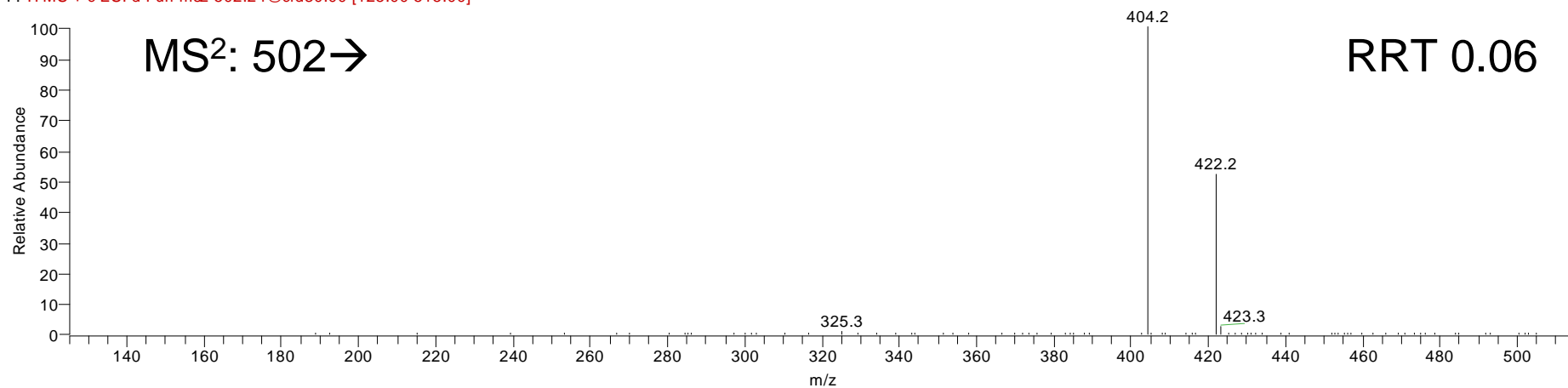
Fig. S9a**A⁵-3 β -ol-17-one 3-sulphate 17-GP**

Sample_502673_2_11_x2

27/07/2007 15:46:16

sample

Sample_502673_2_11_x2 #76 RT: 0.75 AV: 1 NL: 6.18E4
F: ITMS + c ESI d Full ms2 502.24@cid30.00 [125.00-515.00]



Sample_502673_2_11_x2 #77 RT: 0.75 AV: 1 NL: 5.58E2
F: ITMS + c ESI d Full ms3 502.24@cid30.00 423.32@cid35.00 [105.00-435.00]

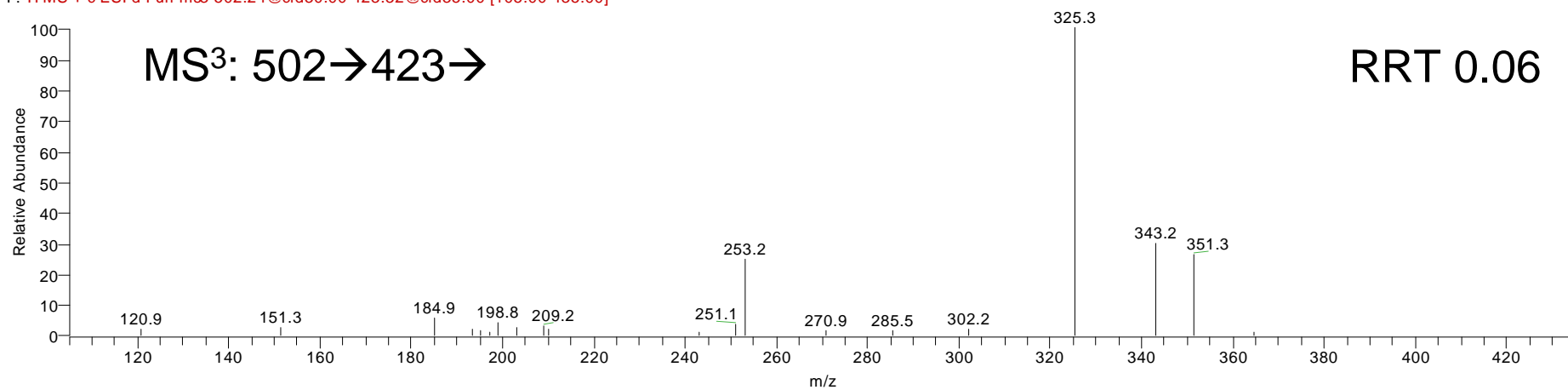


Fig. S9b

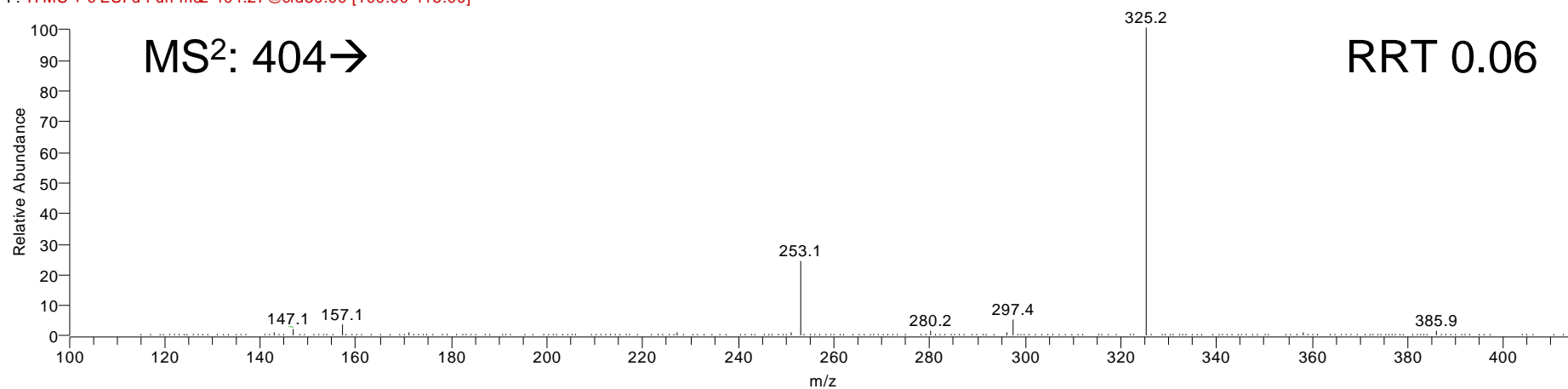
A⁵-3 β -ol-17-one 3-sulphate 17-GP

Sample_502673_2_11_x2

27/07/2007 15:46:16

sample

Sample_502673_2_11_x2 #81 RT: 0.79 AV: 1 NL: 9.15E3
F: ITMS + c ESI d Full ms2 404.27@cid30.00 [100.00-415.00]



Sample_502673_2_11_x2 #82 RT: 0.79 AV: 1 NL: 2.40E3
F: ITMS + c ESI d Full ms3 404.27@cid30.00 325.24@cid35.00 [75.00-340.00]

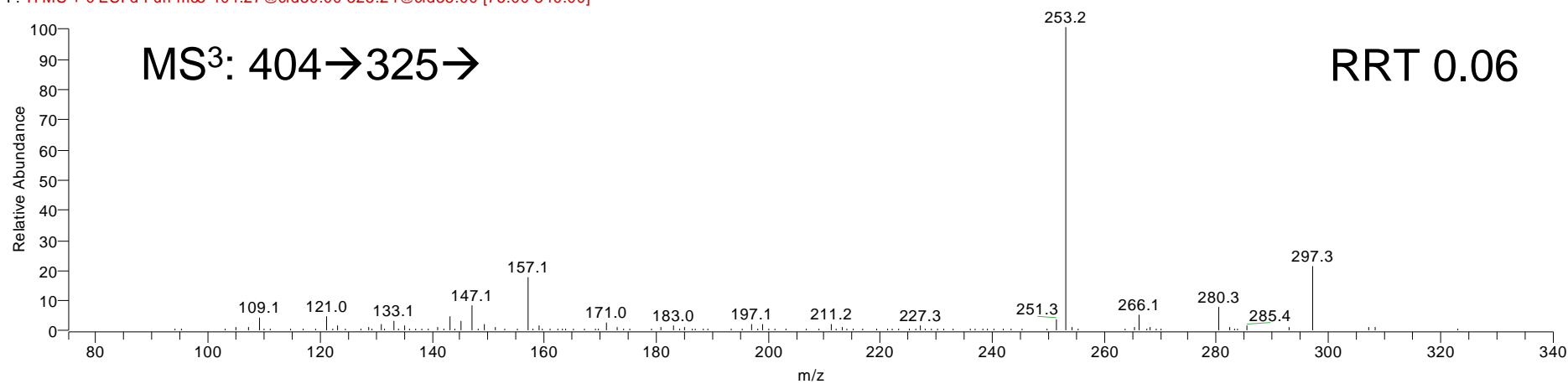


Fig. S9c

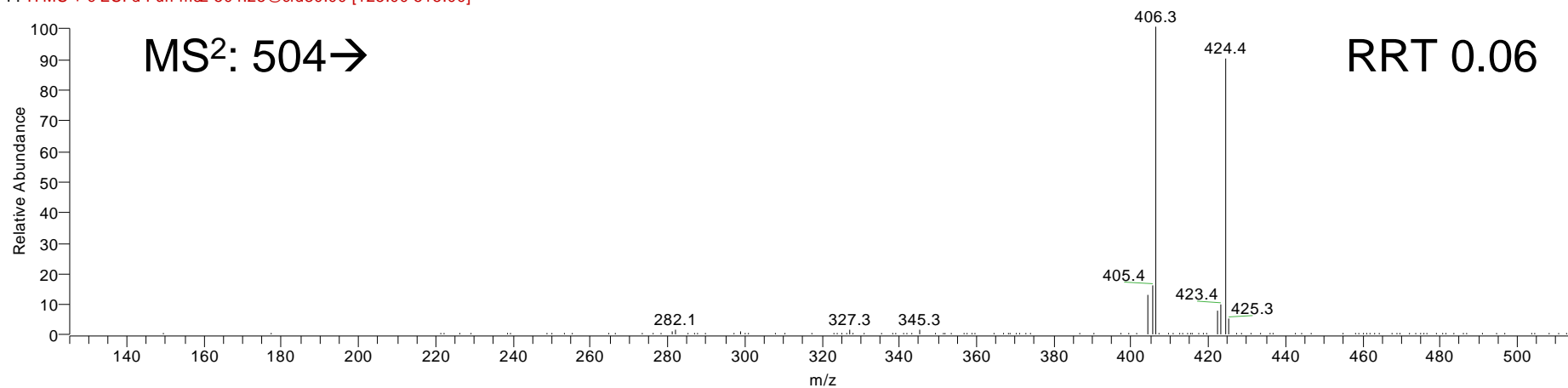
A-3-ol-17-one 3-sulphate 17-GP

Sample_502673_2_11_x2

27/07/2007 15:46:16

sample

Sample_502673_2_11_x2 #86 RT: 0.83 AV: 1 NL: 1.82E4
F: ITMS + c ESI d Full ms2 504.25@cid30.00 [125.00-515.00]



Sample_502673_2_11_x2 #122 RT: 1.18 AV: 1 NL: 1.51E4
F: ITMS + c ESI d Full ms2 504.25@cid30.00 [125.00-515.00]

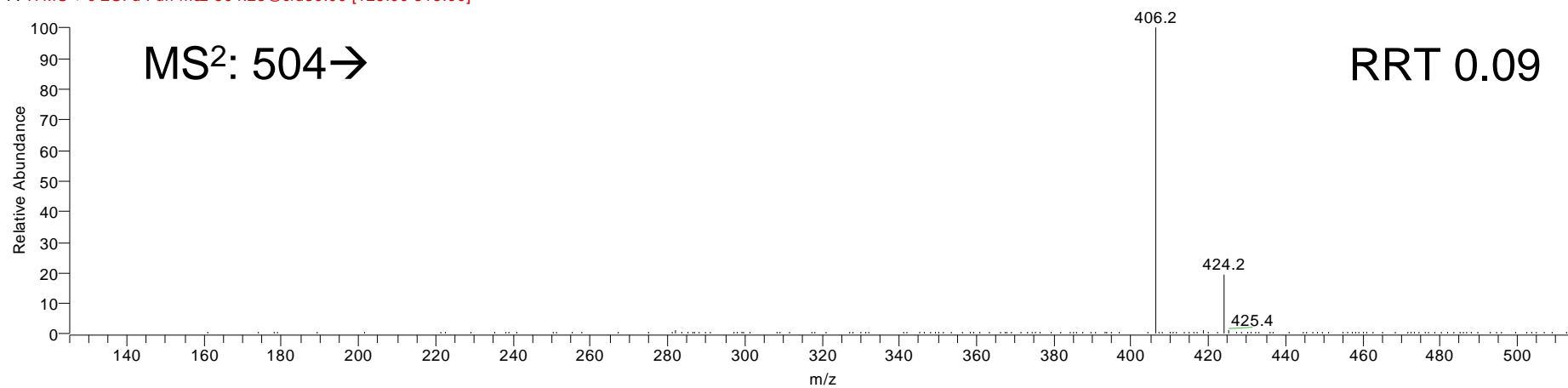


Fig. S9d

A-3-ol-17-one 3-sulphate 17-GP

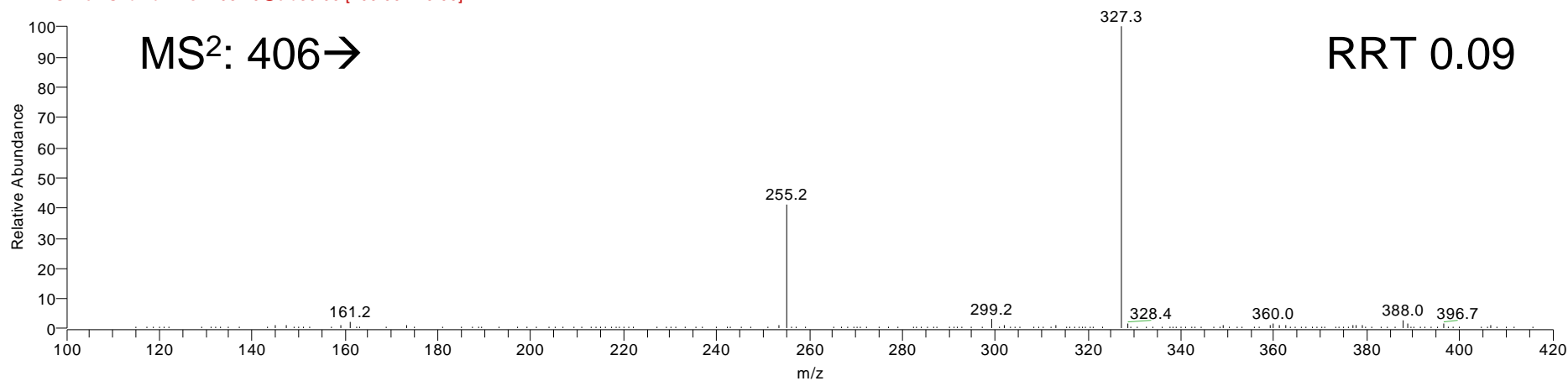
Sample_502673_2_11_x2

27/07/2007 15:46:16

sample

Sample_502673_2_11_x2 #124 RT: 1.20 AV: 1 NL: 3.76E3

F: ITMS + c ESI d Full ms2 406.29@cid30.00 [100.00-420.00]



Sample_502673_2_11_x2 #125 RT: 1.20 AV: 1 NL: 2.05E3

F: ITMS + c ESI d Full ms3 406.29@cid30.00 327.31@cid35.00 [80.00-340.00]

