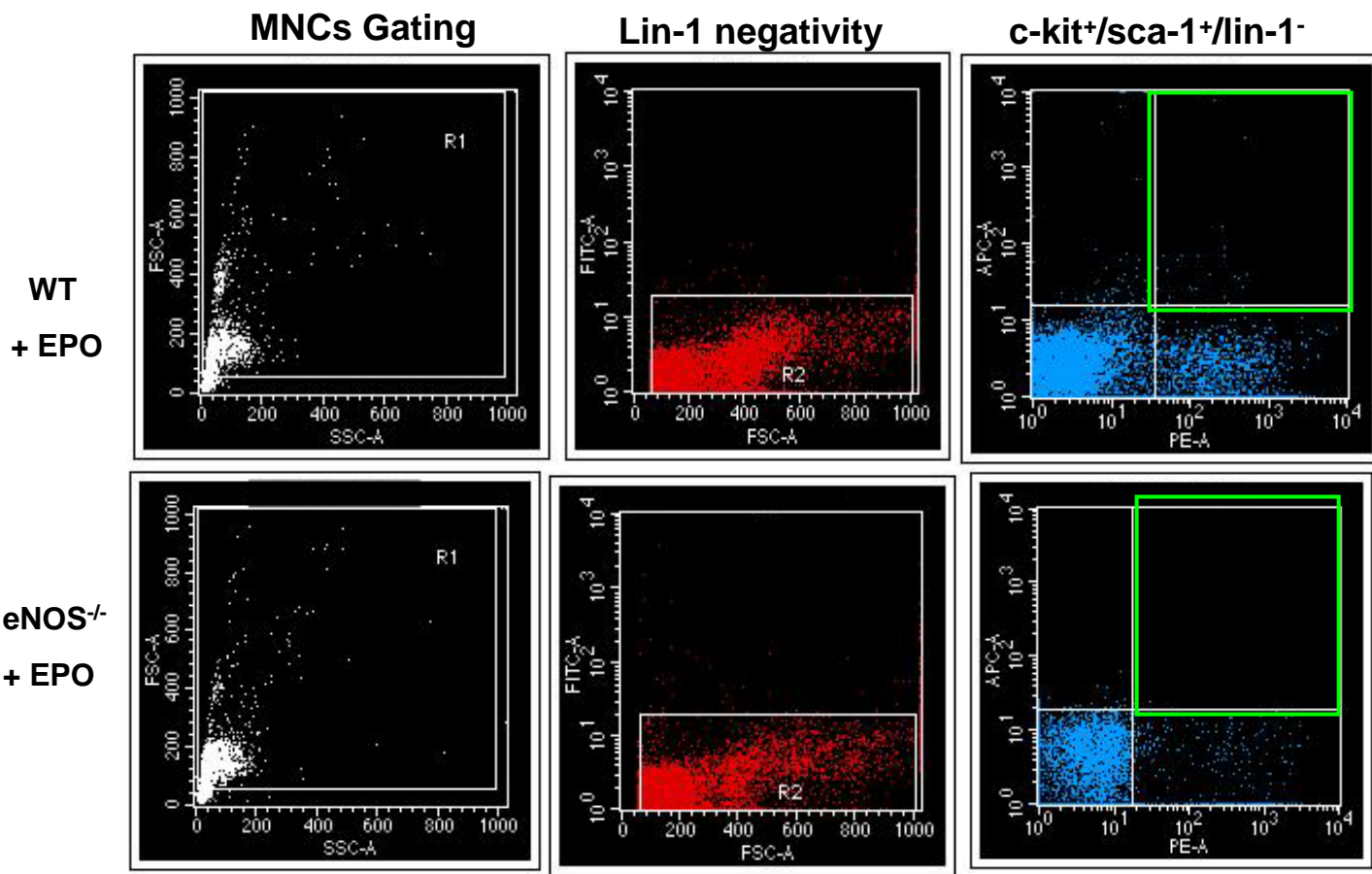
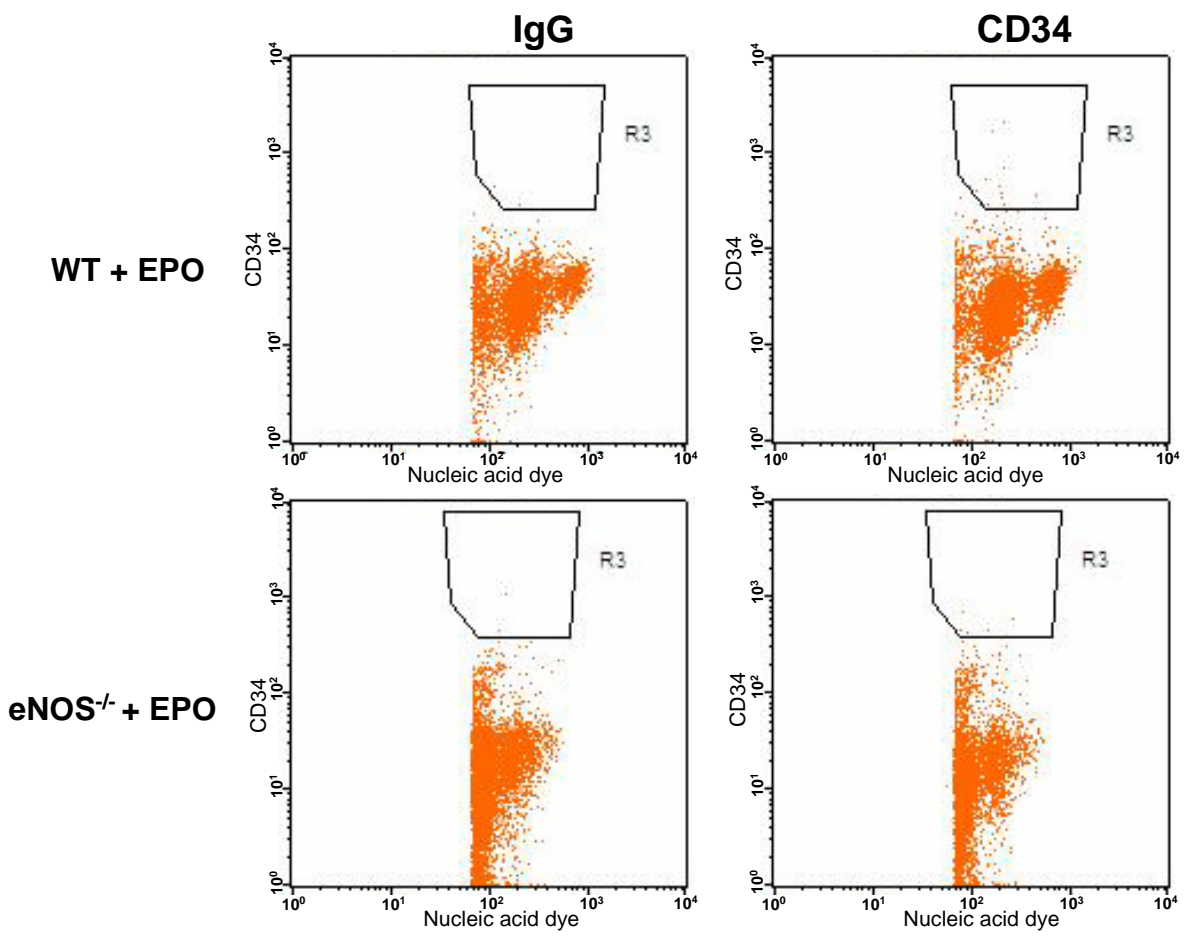


# Supplemental Figure S1



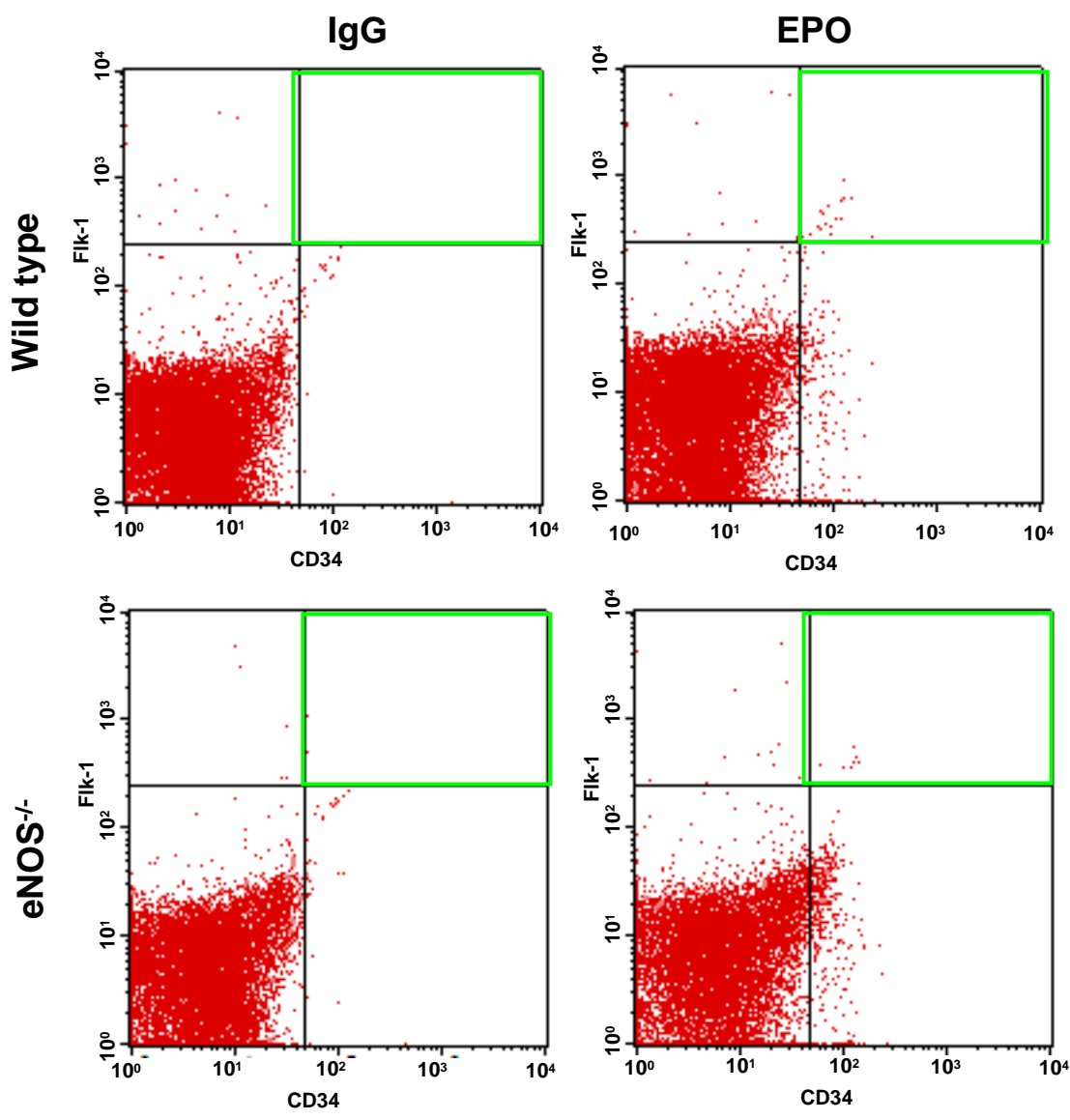
Dot plot representing quantification of c-kit<sup>+</sup>/sca-1<sup>+</sup>/lin-1<sup>-</sup> (KSL) cell population, an index of hematopoietic stem cells, in wild type and eNOS<sup>-/-</sup> mice after treatment with EPO. Gated mononuclear cells (region R1, left panel) that stained negative for lin-1-FITC (region R2, center panel) were further analyzed for co-expression (right panel) of sca-1-PE (FL2) and c-kit-APC (FL4), and KSL cell population (represented in green box) were represented as percentage of gated events (R1).

# Supplemental Figure S2



Dot plot representing quantification of CD34<sup>+</sup> cells by Procount progenitor cell enumeration kit (BD Biosciences). Events gated in region R3 are cells expressing CD34. Left panel represents staining of cells in the control (IgG), while right panel represents staining of cells with EPO.

# Supplemental Figure S3



Dot plot representing quantification of cells co-expressing CD34<sup>+</sup> (FITC, FL-1) and Flk-1 (PE, FL-2) (represented in green box), an index of endothelial progenitor cells, in wild type and eNOS<sup>-/-</sup> in the presence of EPO. Percentage of EPCs (represented in green box) were represented as percentage of gated events (region R1 in Supplemental Figure S1).