

Supplementary Data

Fig. S1

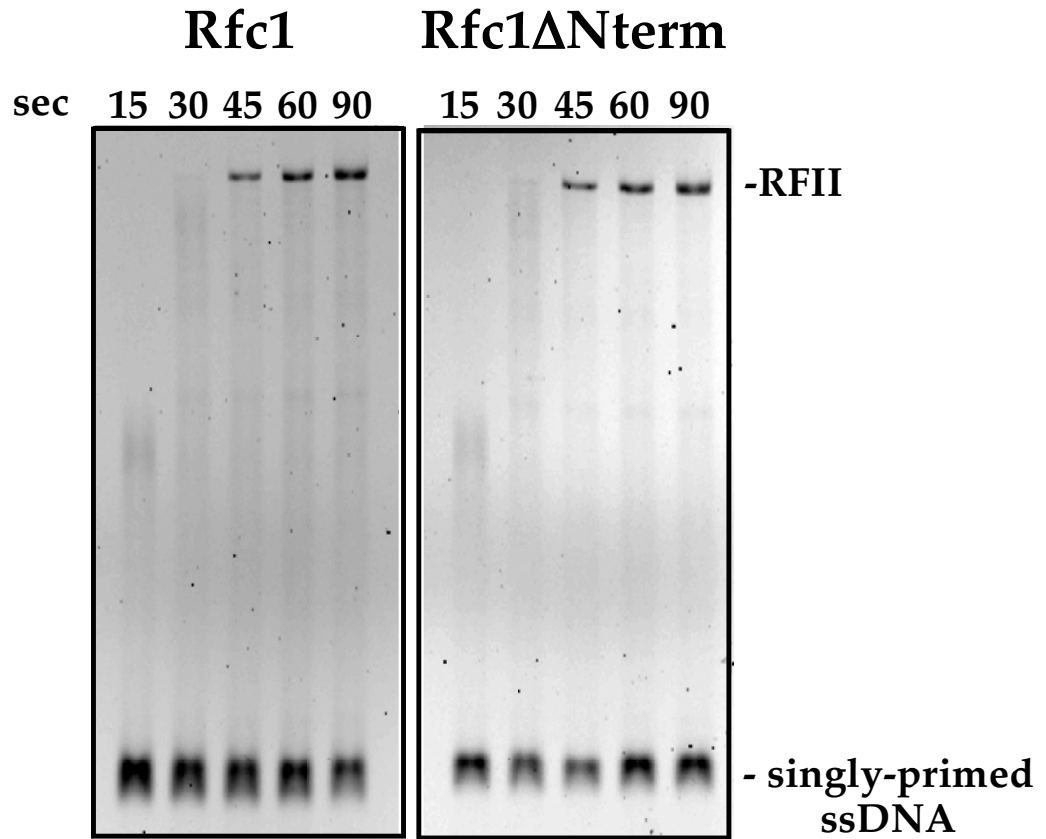


Fig. S1. ssDNA binding domain of RFC1 not required for Pol  $\delta$  speed or processivity. Pol  $\delta$  replication was performed as in Figure 2 and as described in Experimental Procedures. Samples were separated on a 0.8% neutral agarose gel that was stained with Ethidium Bromide. The RFC complex used in the reactions in the left panel contained full-length RFC1. The RFC complex used in the reactions in the right panel contained a truncated form of RFC1 lacking the 30 kDa N-terminal ssDNA binding domain.