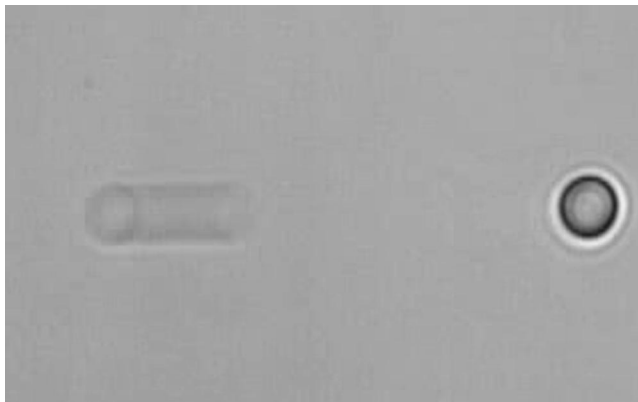


Supporting Information

van den Broek *et al.* 10.1073/pnas.0804248105



Movie S1. Rapid periodic stretching of a lambda phage DNA molecule between two optically trapped beads, as used for cleavage detection of DNA in nonstretched configurations..

[Movie S1 \(MOV\) ¹](#)

Other Supporting Information Files

[SI Appendix \(PDF\)](#)