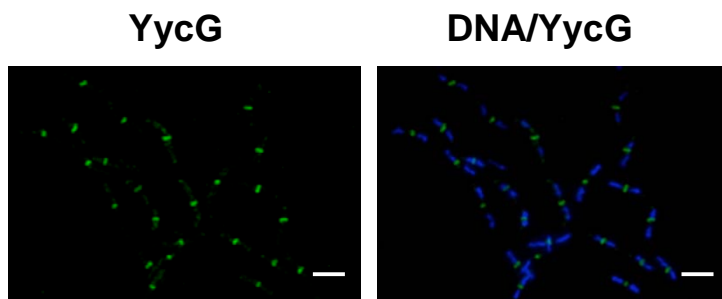
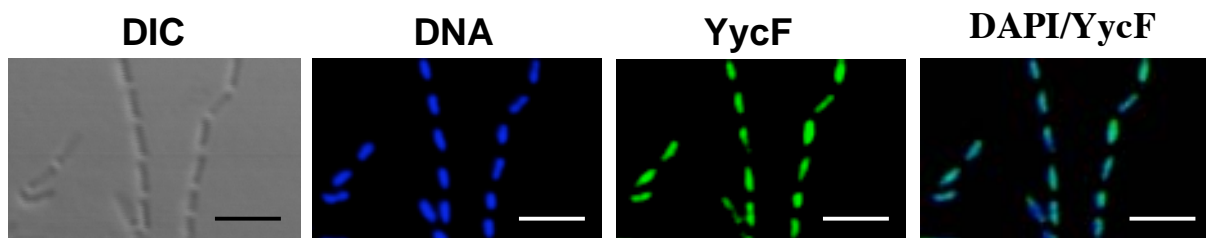


**Supplemental Figure S1.** Schematic presentation of the genetic context of (A) the IPTG dependent FtsZ depletion strain KP444 and (B) the IPTG dependent YycG depletion strain JH25033

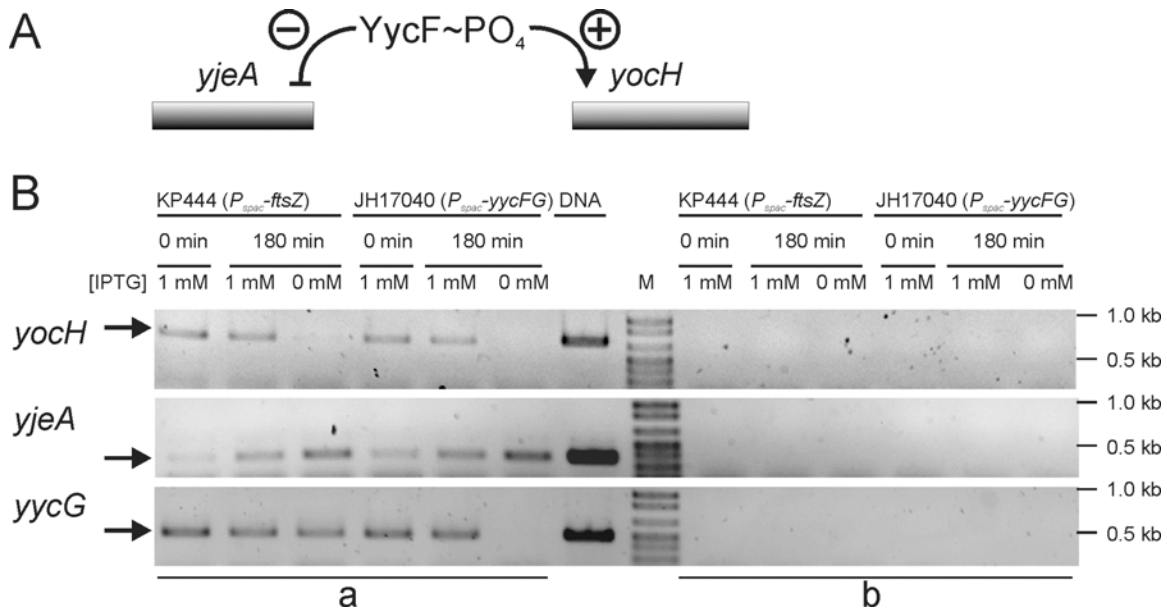
## A YycG localization



## B YycF localization



**Supplemental Figure S2.** YycG and YycF localize independently of YycH and YycI. Localization of (A) YycG and (B) YycF was visualized with fluorescent antibodies in the *yycHI* deletion strain JH25031. DNA was visualized by DAPI staining. YycG localization to the division septum and YycF co-localization with the nucleoid remains evident in the absence of YycH and YycI (compare to Fig. 1 and 5A).



**Supplemental Figure S3.** FtsZ depletion mimics YycF~PO<sub>4</sub> depletion in regulation of the *yycFG* regulon. Figure 6 of the manuscript is shown here with the negative controls carried out on PCR-amplified mRNA that was not transcribed into cDNA (panels in “b”). The lack of product indicates that none of the samples were contaminated by genomic DNA. PCR-amplified mRNA transcribed into cDNA by RT reaction is shown in the panels in “a”. The size of the bands in the Molecular Marker lane (M) are shown.