

E07-10-1078RR

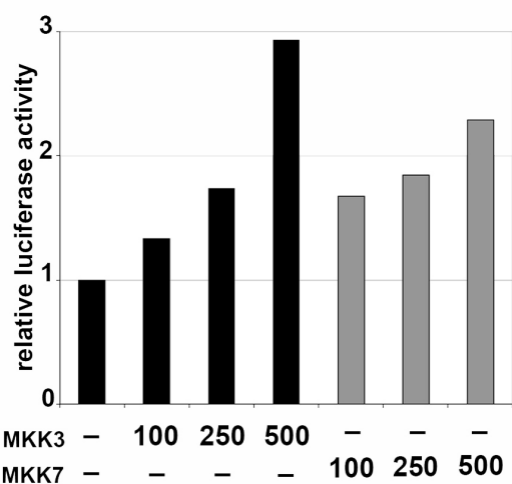
Supplemental Fig. 1. Activation of prSlug-Luc reporter gene by JNK and p38 cascades. Ectopic activation of the JNK and p38 cascades using MKK3 and MKK7, respectively, moderately induces the prSlug-Luc reporter gene, as estimated by paired Student's test.

Supplemental Fig. 2. Keratinocyte migration in higher PD184352 concentration. 100 μ M PD184352 does not inhibit keratinocyte migration in the presence of fetal calf serum.

Supplemental Fig. 3. Erk5 expression in HaCaT stable clones. HaCaT cells were transfected with an expression vector for Erk5 and selected for puromycin resistance. Stable clones were tested for Erk5 protein expression by immunoblotting and quantification as described in the legend to Fig. 3.

Supplemental Fig. 4. EGF-induced vimentin expression is not modulated by Erk5 depletion. Parental, SH-Control (two distinct controls) and SH-Erk5 HaCaT cells were analyzed by western analysis for vimentin expression. CCL39 were used as a positive control for vimentin expression. Cells were treated with EGF on lower panel.

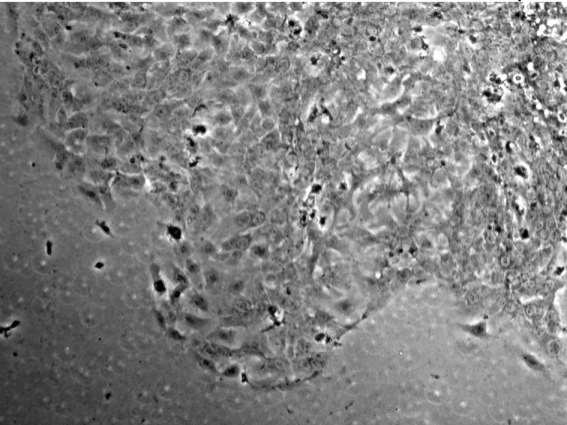
Supplemental Fig. 5. Actin mesh organization in Erk5 deficient fibroblasts. Different actin cytoskeletal staining in embryonic fibroblasts (MEF) derived from wild-type (WT), Erk5 deficient (Erk5 KO) or Mek5 deficient (Mek5 KO) mice. Cells were grown to low (A), mid (B) or high (C) confluence on glass coverslips, fixed and stained as described. A, Low confluence MEF, either WT or Erk KO, were stained with either anti-paxillin or phalloidin-FITC. Mid (B) or high (C) confluence MEF, either WT, Erk KO or Mek5 KO, were stained with DAPI to visualize nuclei or phalloidin-FITC to visualize the actin cytoskeleton. The arrows in B show large actin cables present only in WT MEF. Bar = 10 μ m (A) or 50 μ m (B and C).



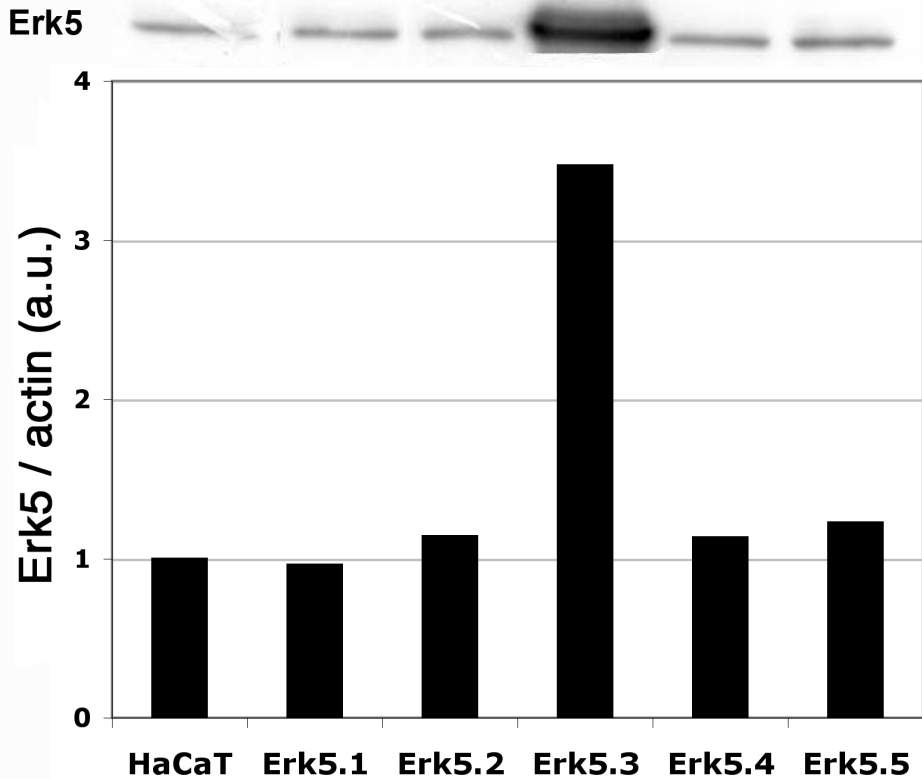
Supplemental Fig 1

FCS, EGF

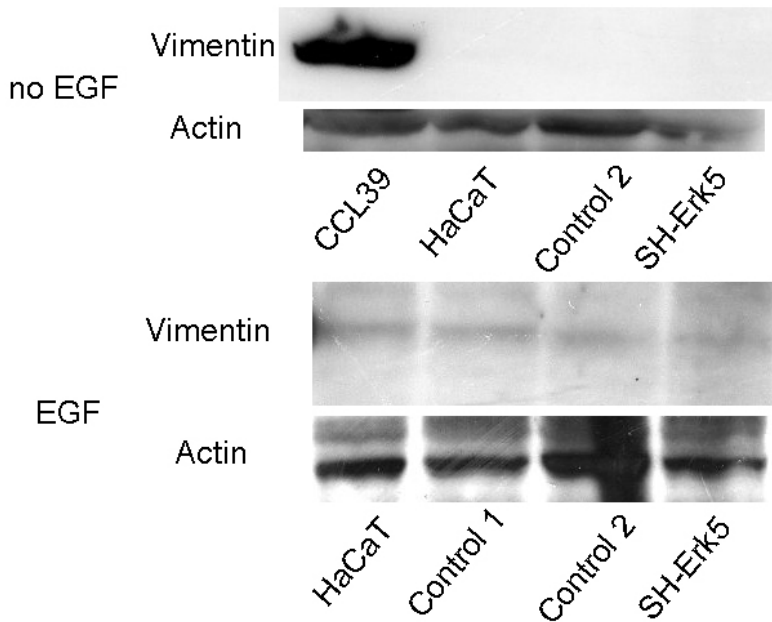
PD184352 100 μ M



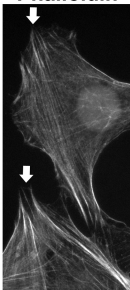
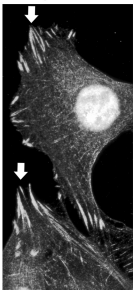
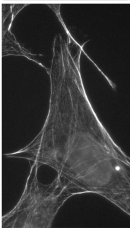
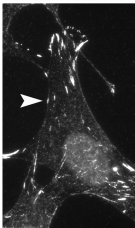
Supplemental Fig 2

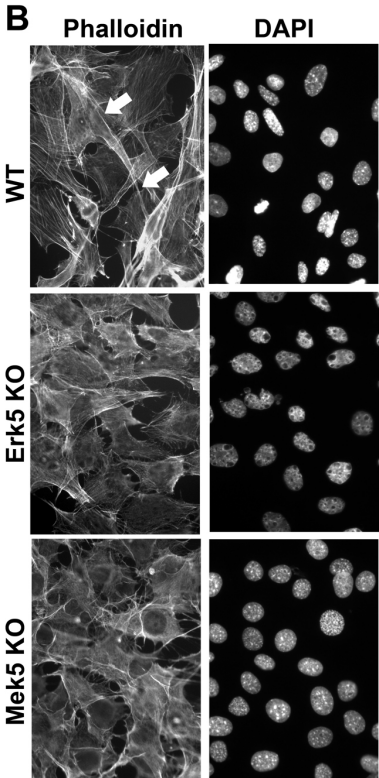


Supplemental Fig 3

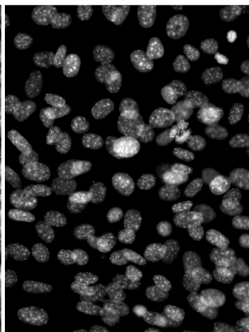
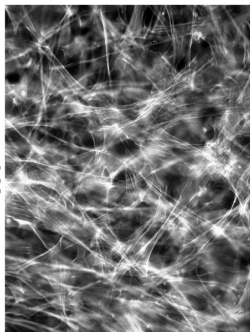
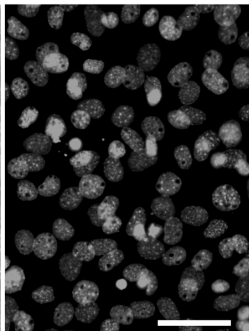
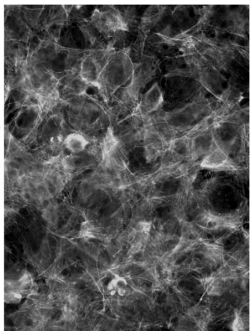


Supplemental Fig 4

A**Paxillin****Phalloidin****WT****Erk5 KO****Supplemental Fig 5A**



Supplemental Fig 5B

C**Phalloidin****DAPI****WT****ERK5 KO****Supplemental Fig 5 C**