

**Warts Is Required for PI3K-Regulated
Growth Arrest, Autophagy,
and Autophagic Cell Death in *Drosophila***

Sudeshna Dutta and Eric H. Baehrecke

SUPPLEMENTAL FIGURES

Figure S1. Co-Expression of Yki and Sd induces premature degradation of salivary glands. (A-B) Paraffin sections of animals co-expressing Yki and Sd. Expression of Yki and Sd in salivary glands leads to premature degradation of salivary glands at 6 hours after puparium formation (A) and salivary glands are completely degraded by 24 hours after puparium formation (B).

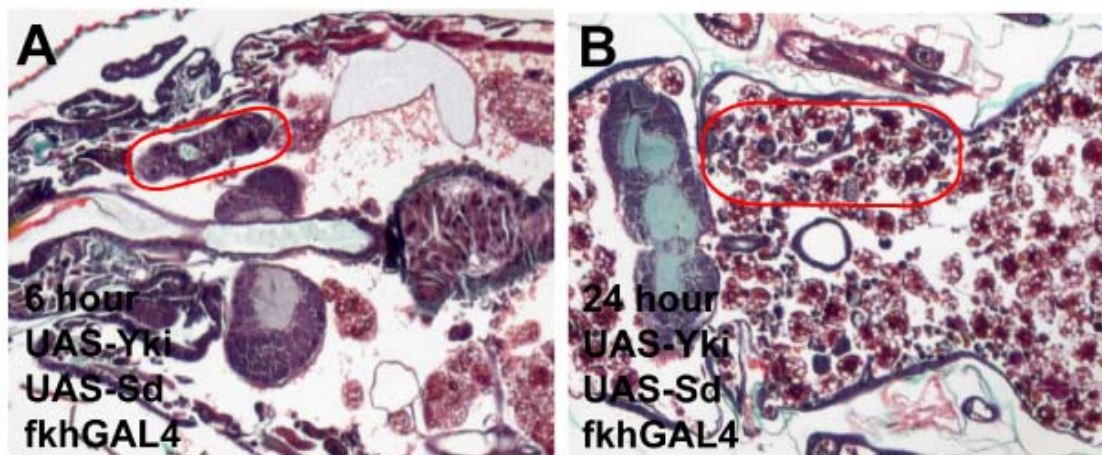


Figure S2. *wts* mutants do not have altered Akt and P-Akt protein levels in salivary glands. Immunoblot showing the levels of Akt and its activated form phosphorylated Akt (P-Akt) in salivary glands during larval and pupal stages in *wts^{P2}* homozygous mutant animals. The lanes contain salivary gland extracts isolated from feeding larvae (FL), wandering larvae (WL), 0 and 6 hours after puparium formation, and 1.5 hours after head eversion in *wts^{P2}* mutant animals.

