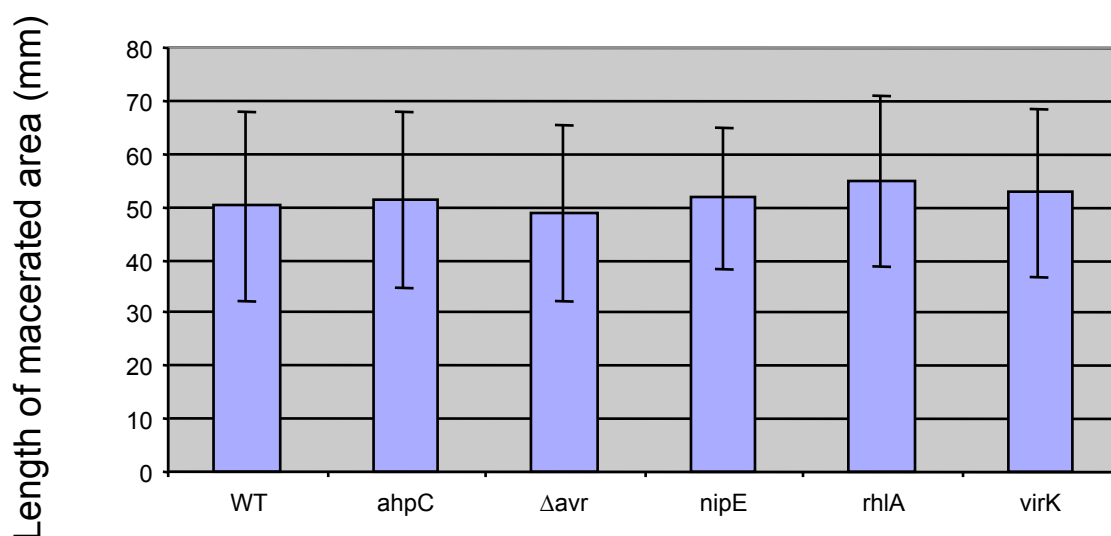


Chicory leaves 10^6 bacteria

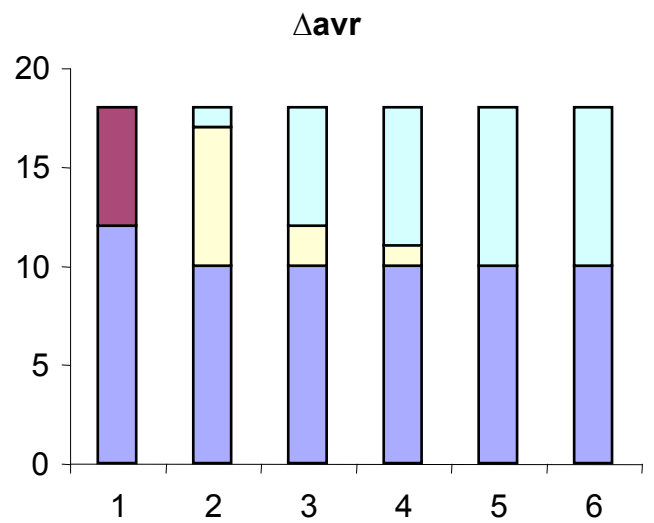
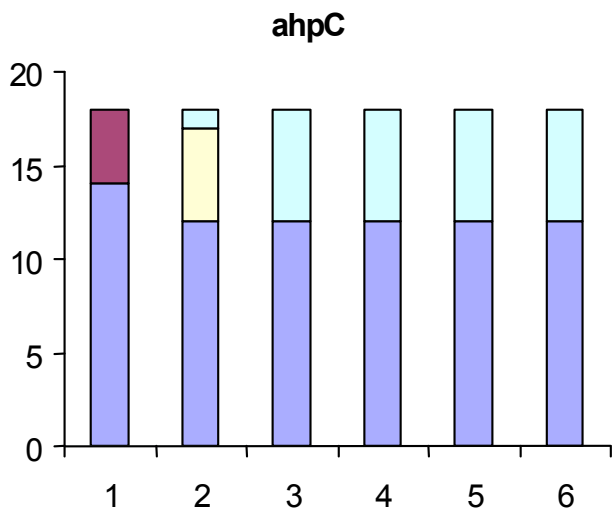
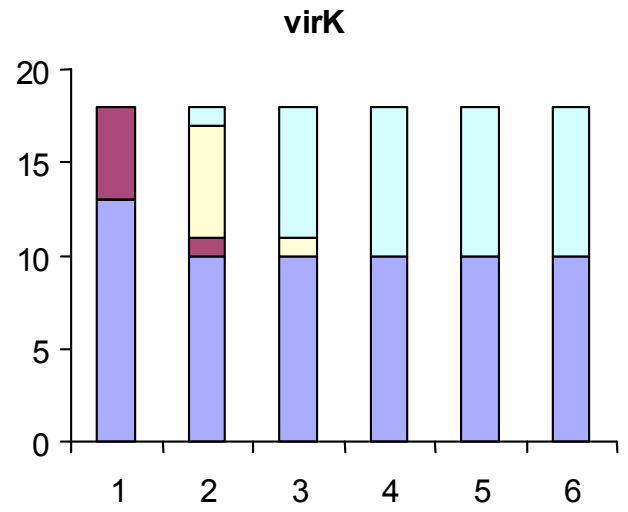
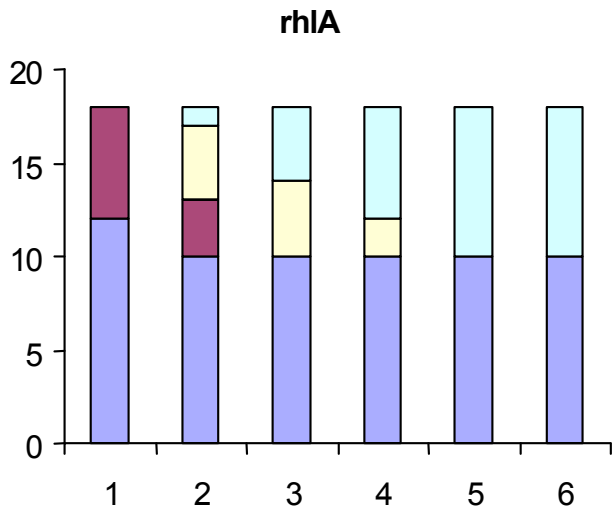
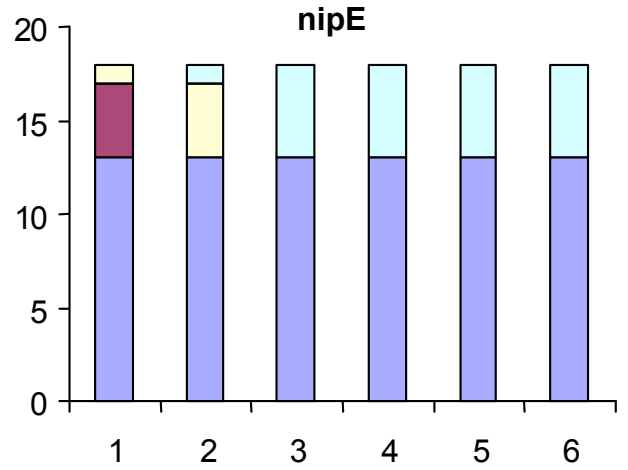
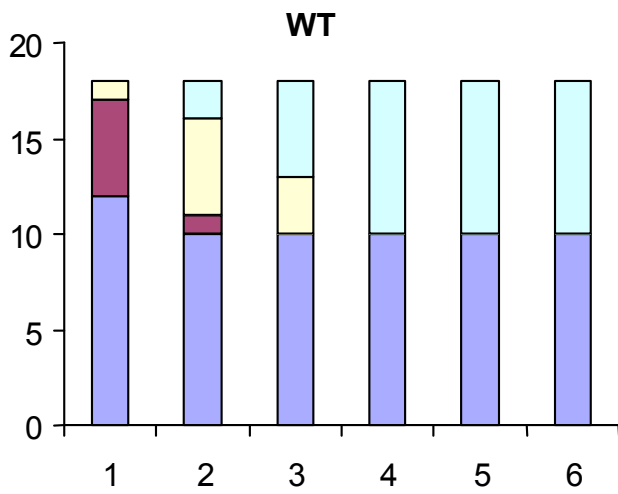


Virulence of the ahpC, Δavr, nipE, rhIA and virK mutants on chicory leaves.

After infection with 10^6 bacteria, the chicory leaves were incubated for 24 hours at 30°C and the length of rotted tissue was measured to estimate the disease severity. The mean value and the standard deviations reported correspond to thirty leaves inoculated with each strain.

Saintpaulia 10⁶ bacteria

Class of symptoms



Saintpaulia 10⁷ bacteria

Class of symptoms

