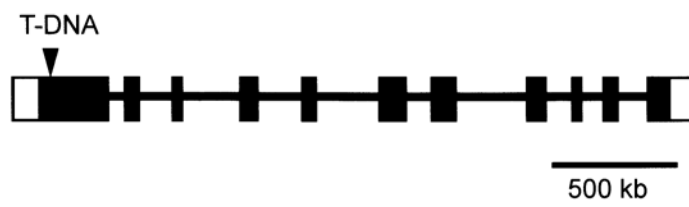
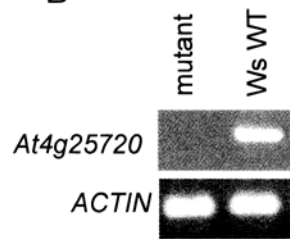


A



B



D

Line	5OP ( $\mu\text{mol g}^{-1}$ fresh weight)
<i>oxp1-2</i>	$1.35 \pm 0.10$
<i>At4g25720/oxp1-2</i>	$1.32 \pm 0.06$

C

Line	GGC activity ( $\text{nmol mg}^{-1}$ protein $\text{min}^{-1}$ )	
	with GSH	with $\gamma$ -EC
WsWT	$0.057 \pm 0.005$	$0.063 \pm 0.005$
<i>At4g25720</i>	$0.060 \pm 0.003$	$0.065 \pm 0.006$