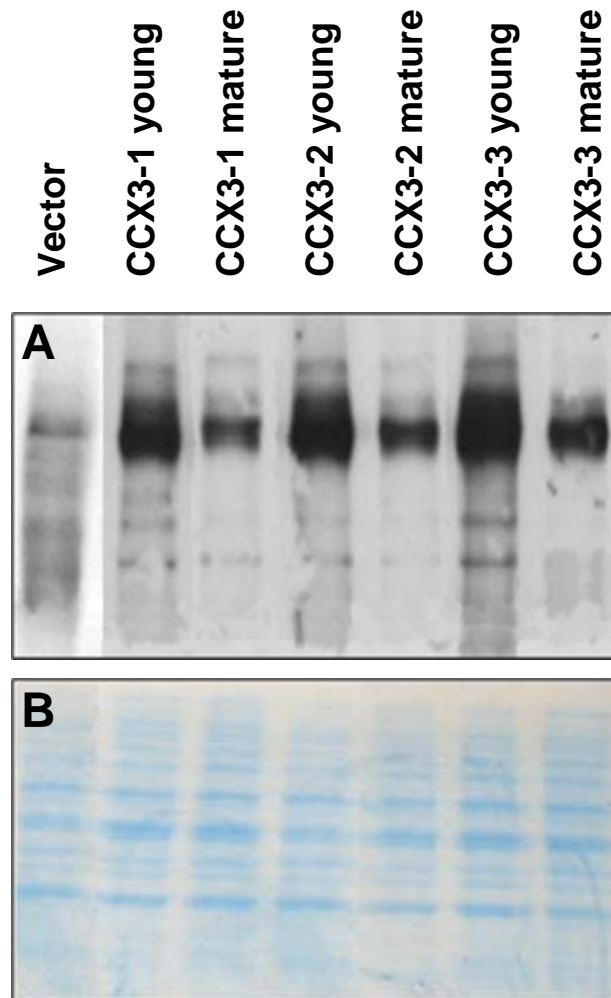


# Supplemental Figure 3



**Figure S3.** Protein oxidation from tobacco plants expressing *AtCCX3*. A, Plant protein carbonyl contents of vector control and *AtCCX3*, were analyzed by western blotting of total protein isolated from tobacco plants with anti-dinitrophenylhydrazine antibody (1:1000) in onset and old leaves. B, Coomassie brilliant blue stained gel of protein to show loading.