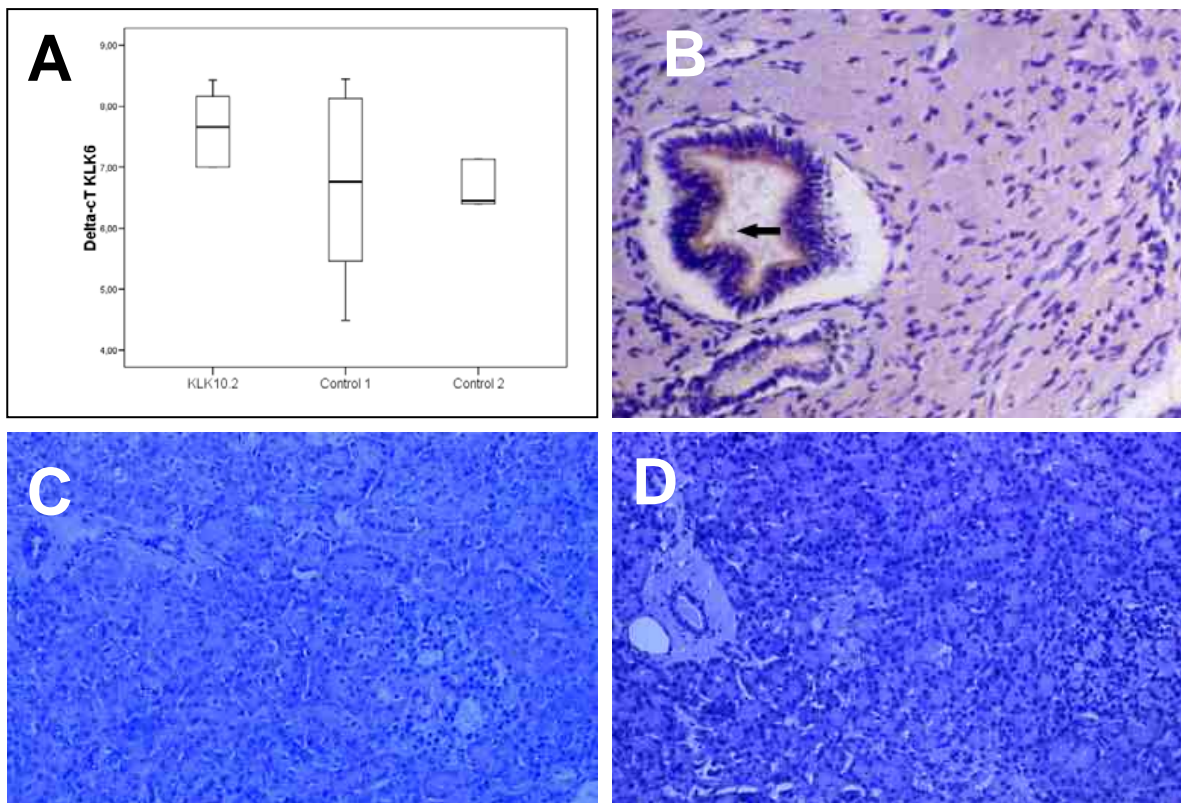


## Supplemental Data 1.



**Supplemental Data1:** Expression of *KLK6* in the transfected cell line. No difference in expression of *KLK6* was observed between cells transfected with *KLK10.2* and control 1 ( $p=0.466$ ) resp. control 2 ( $p=0.977$ ) (**A**). Moderate hK10 immunoexpression in a pancreatic duct (arrow) (x100) (**B**). Negative control without the first Ab in normal pancreatic tissue showed no staining (*KLK6* or *KLK10*) (x100) (**C**). No staining in normal pancreas, by replacing the primary antibody (*KLK6* or *KLK10*) by non-immune serum (x100) (**D**)