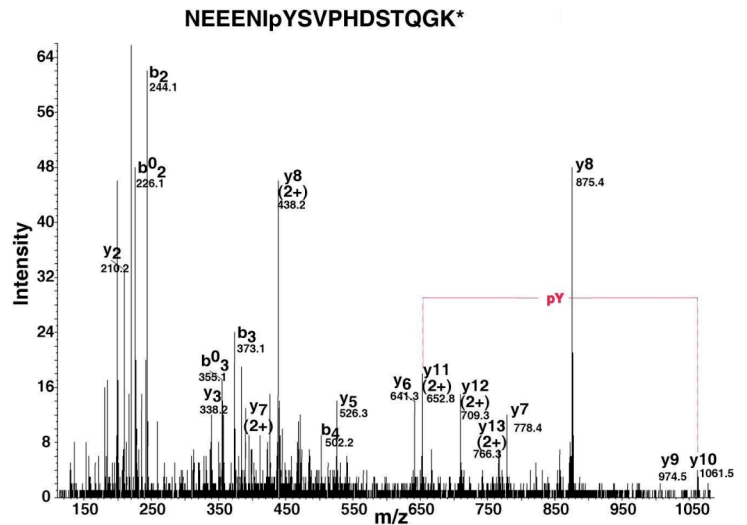
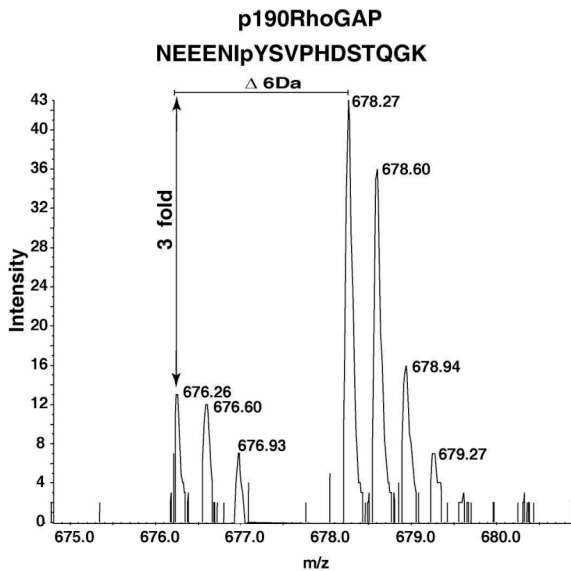
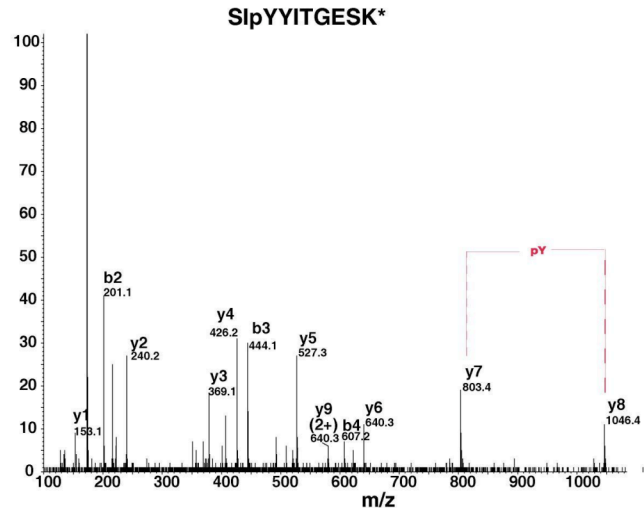
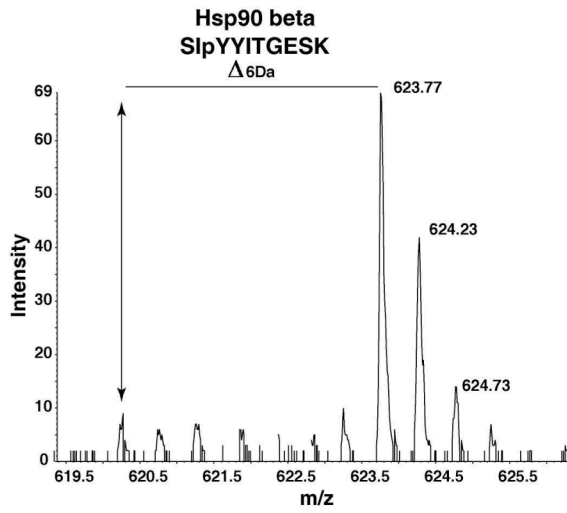
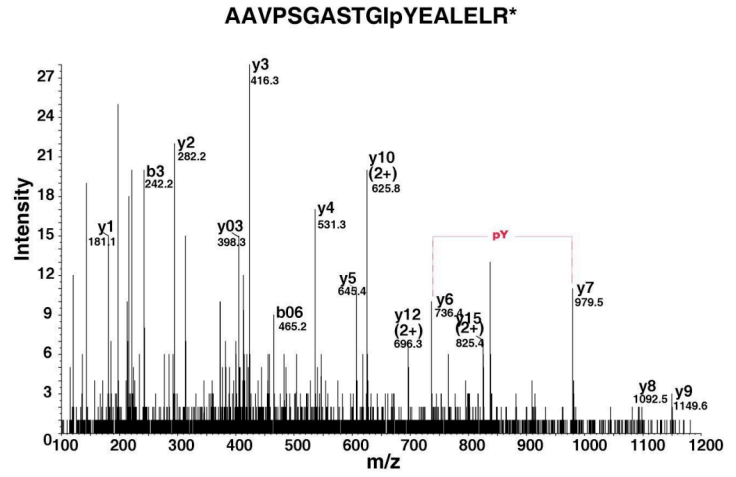
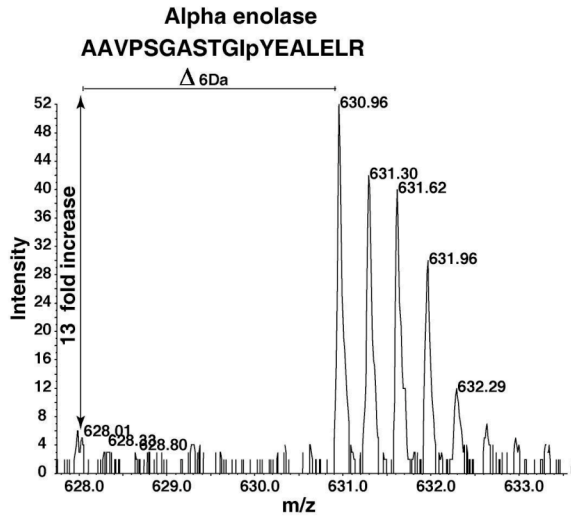
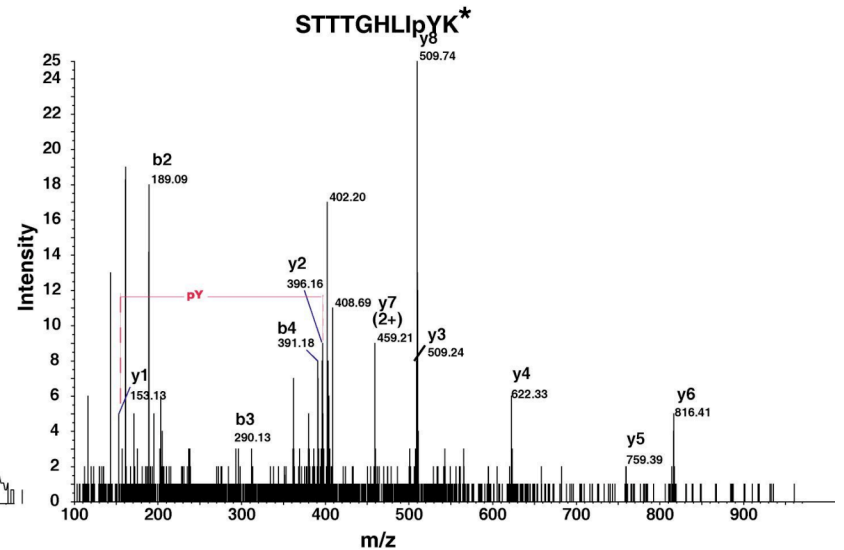
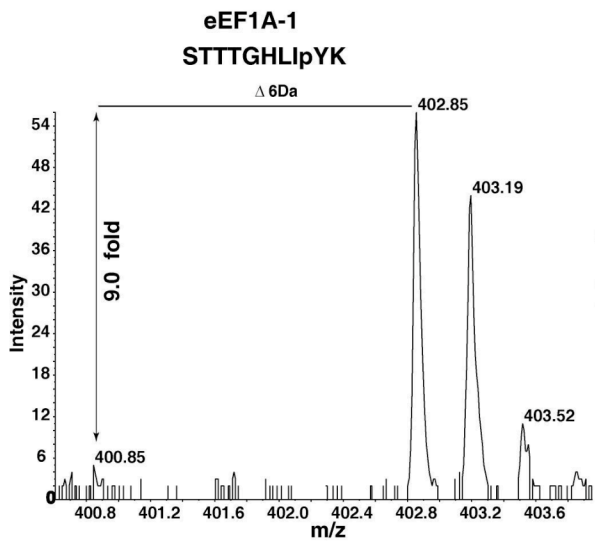
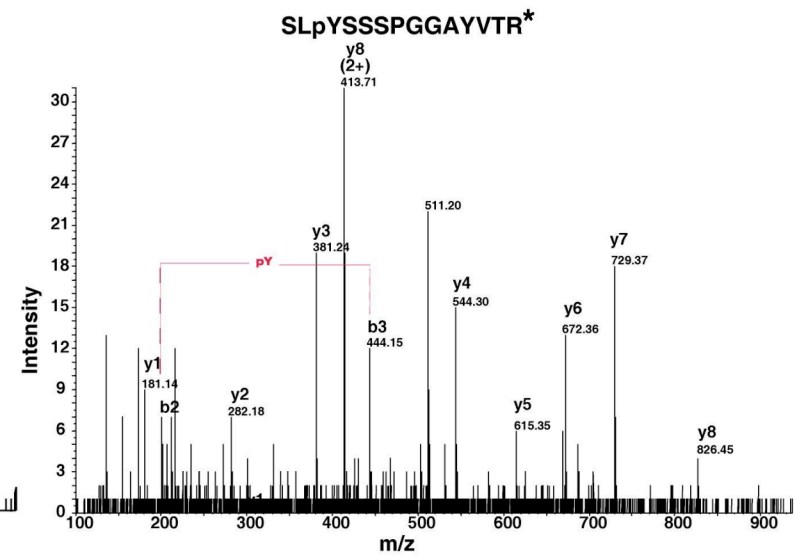
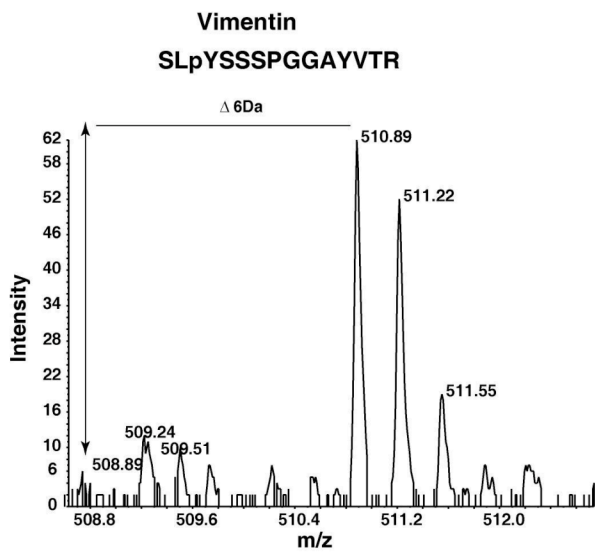
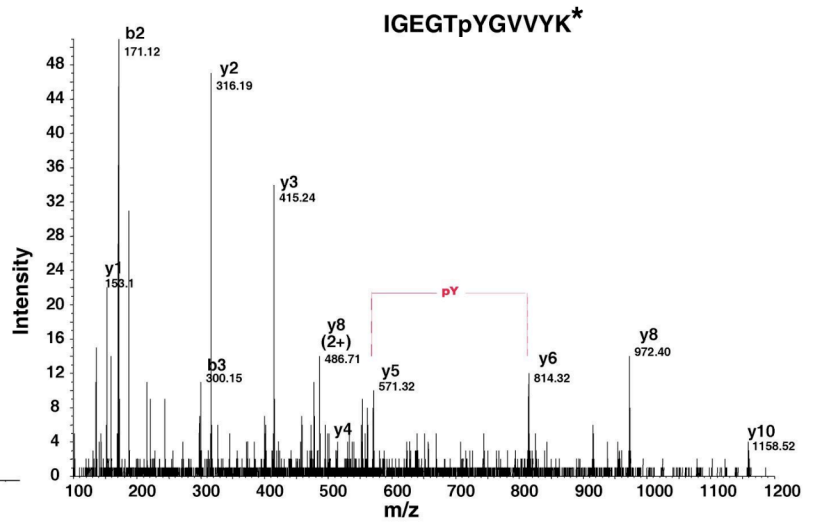
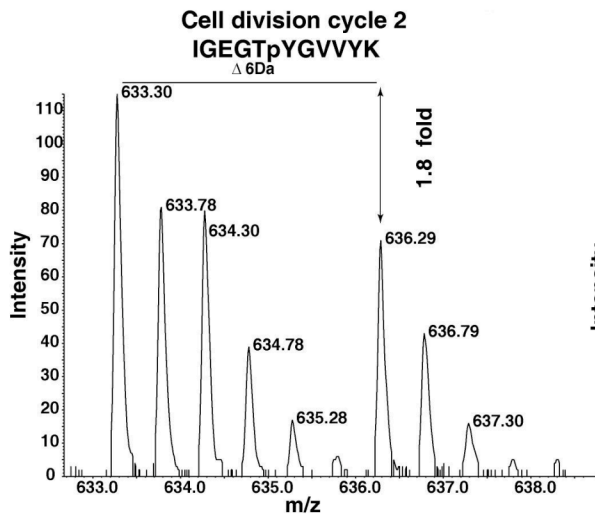
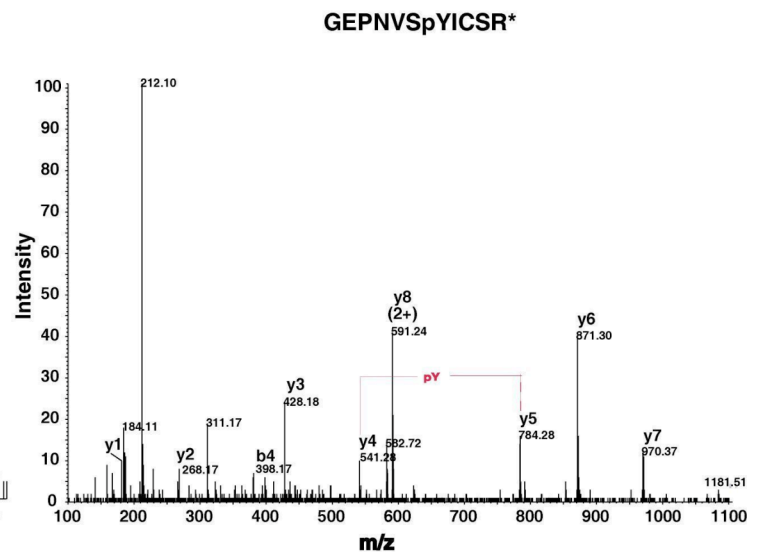
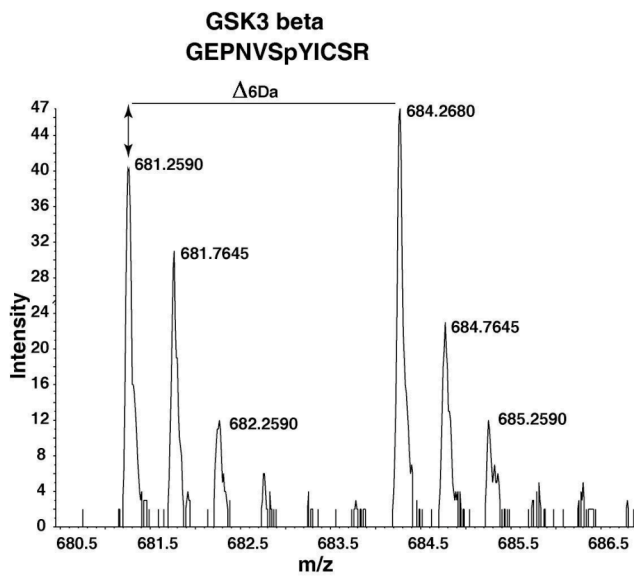
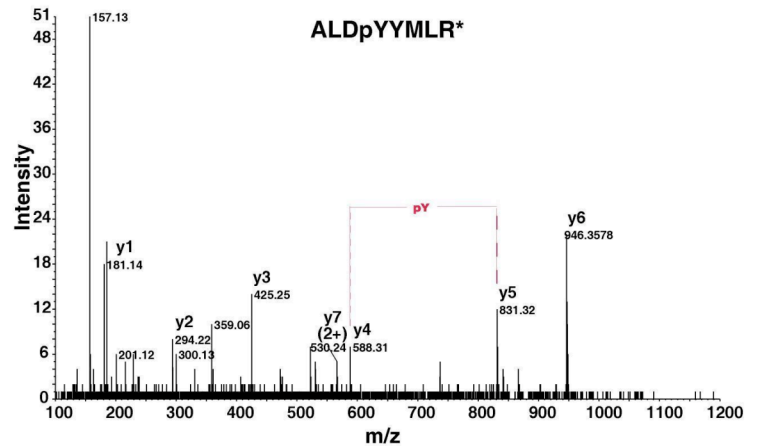
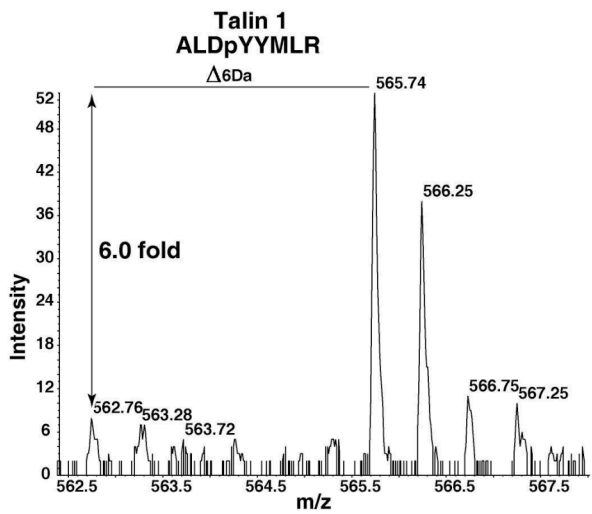
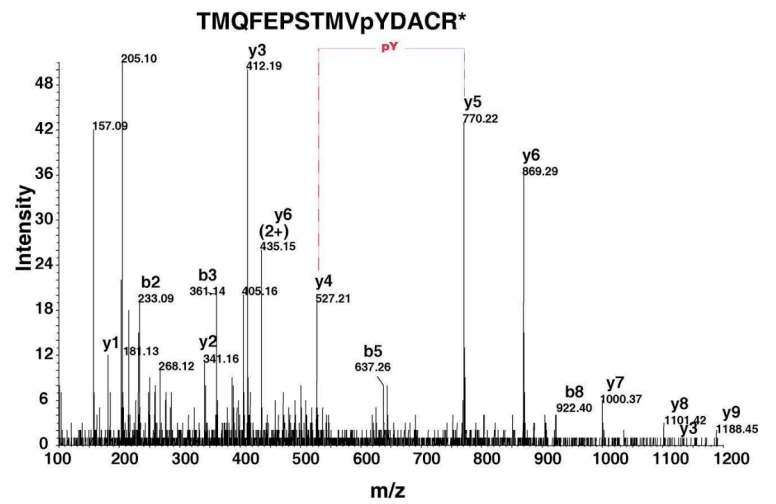
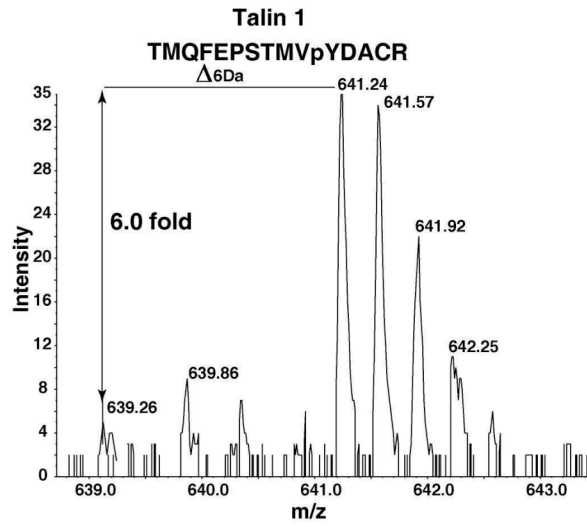
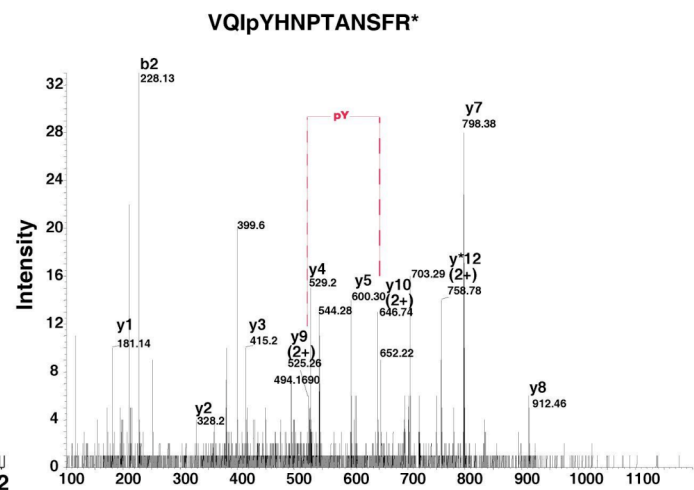
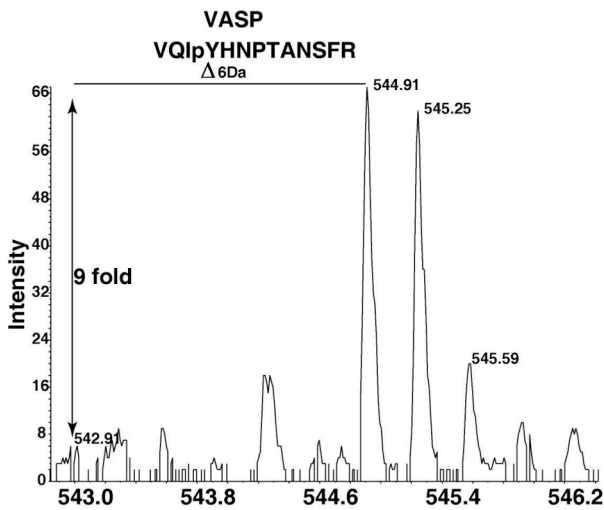
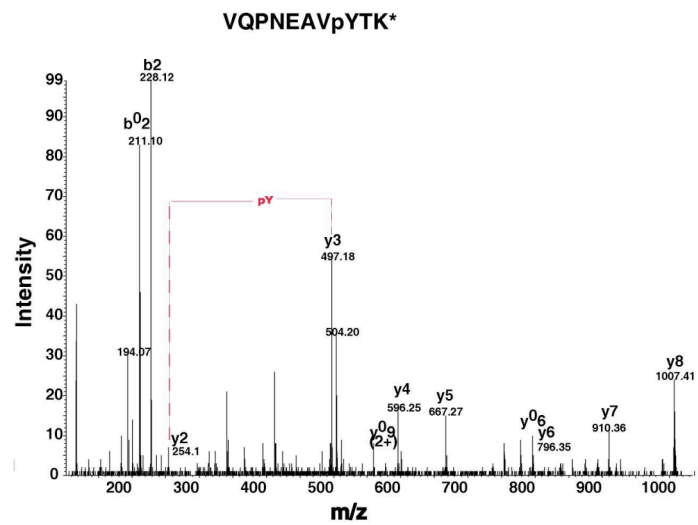
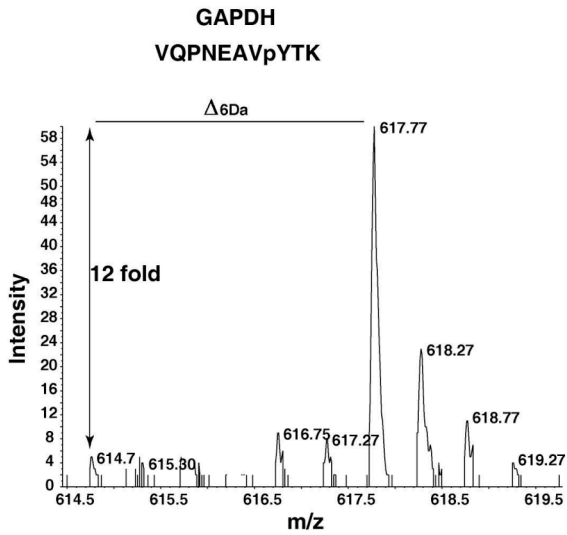
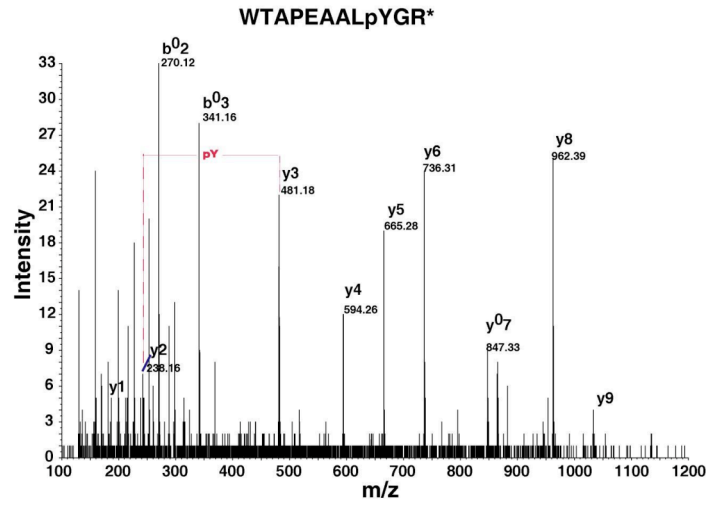
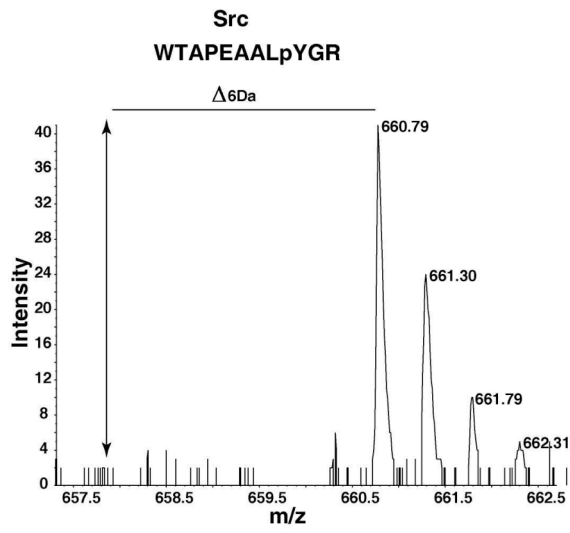


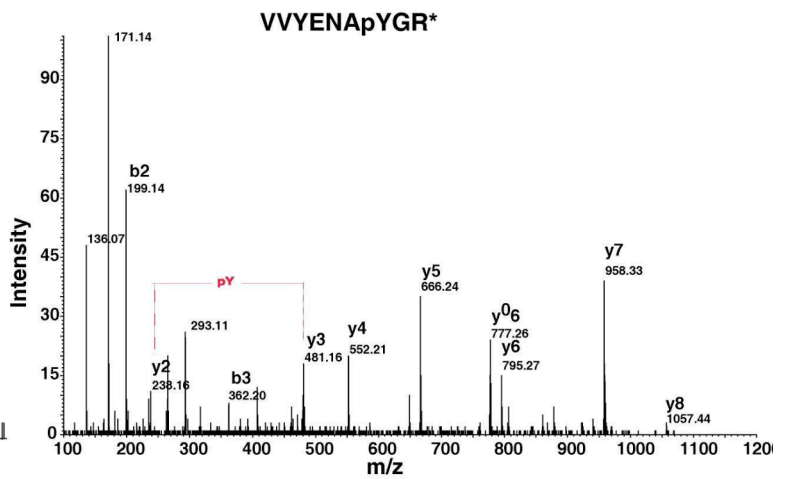
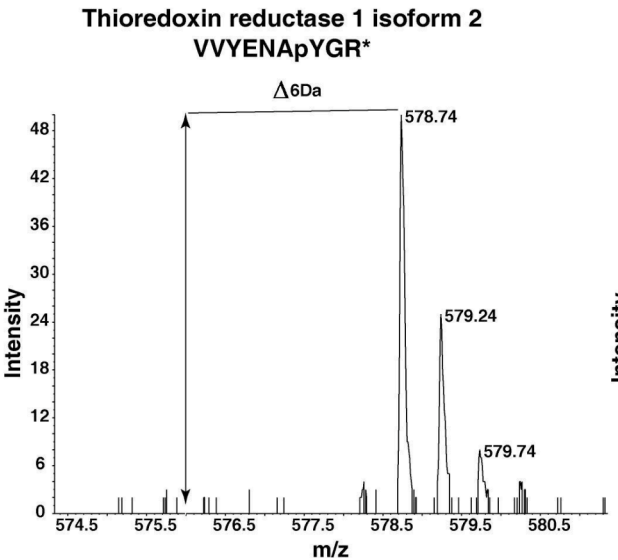
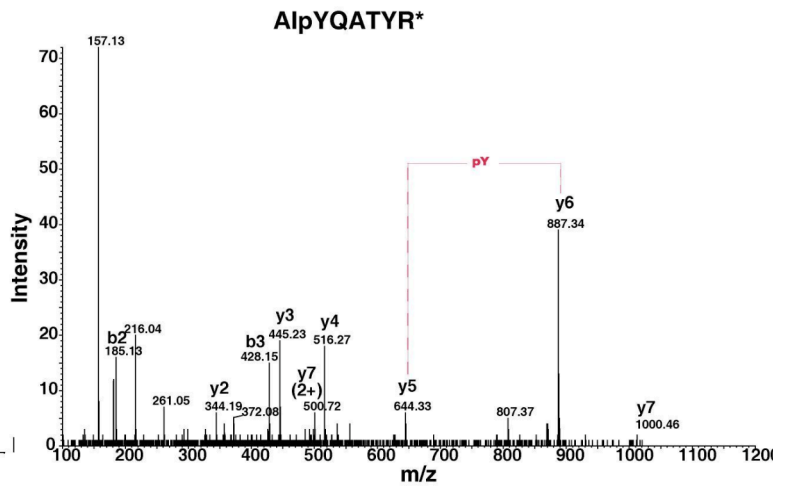
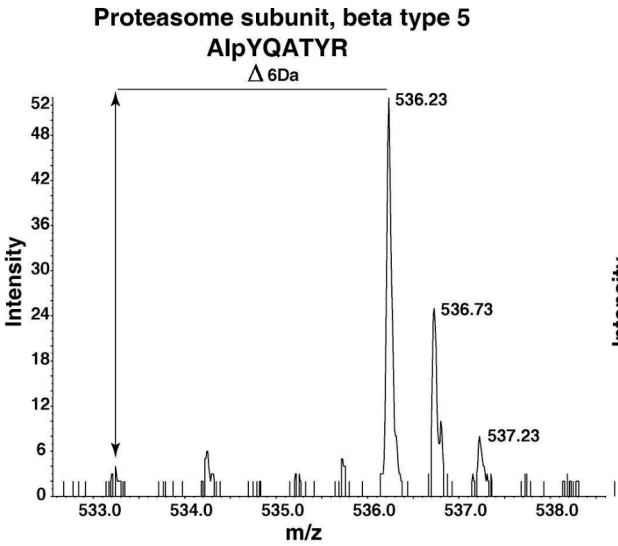
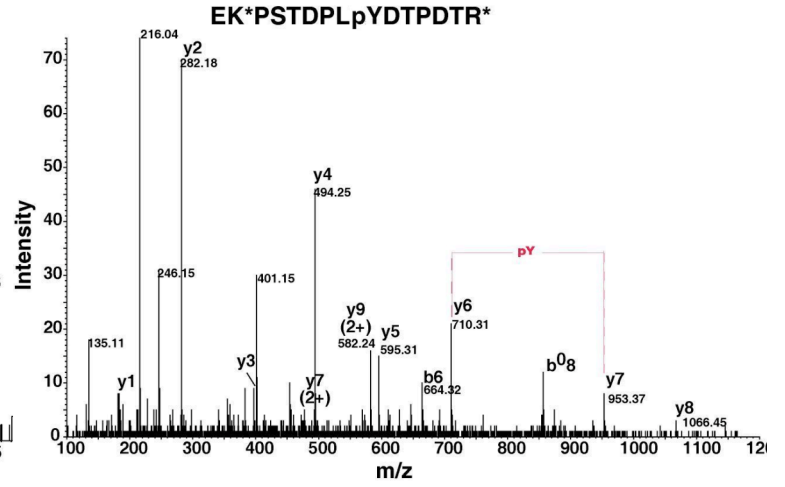
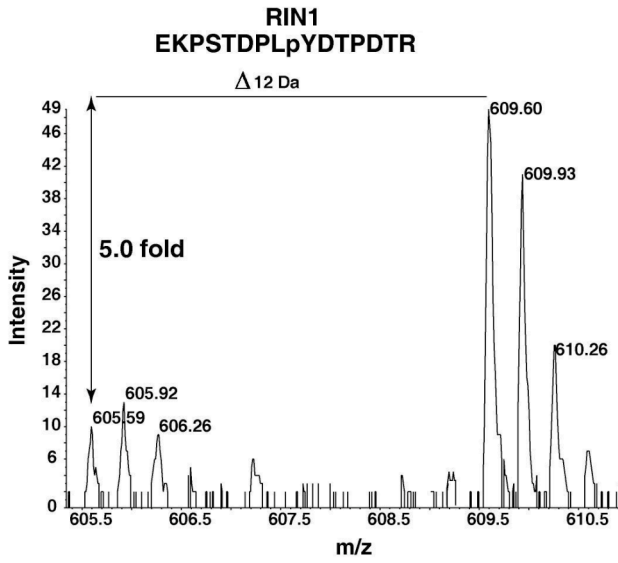
Supplemental Figure S2. Representative spectra showing quantitation of pTyr peptides using SILAC. The MS spectra show the fold change in the level of heavy labeled pTyr peptide (Src-transformed) versus light peptide (nontransformed). The MS/MS spectra show the annotation of fragment ions (b and y ions) confirming the sequence and phosphorylation sites (*pY*). Asterix (*) represents the $^{13}\text{C}_6$ labeled amino acid (R/K). MS and MS/MS spectra of following peptides are shown in the panels below. Twenty-one peptides are shown on the following pages.

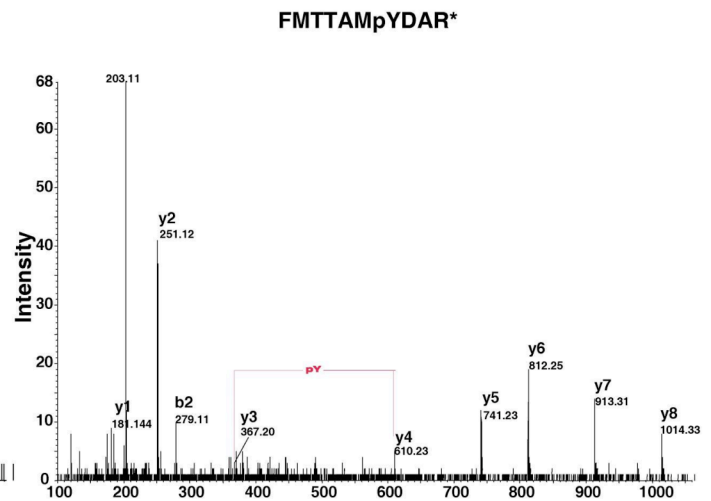
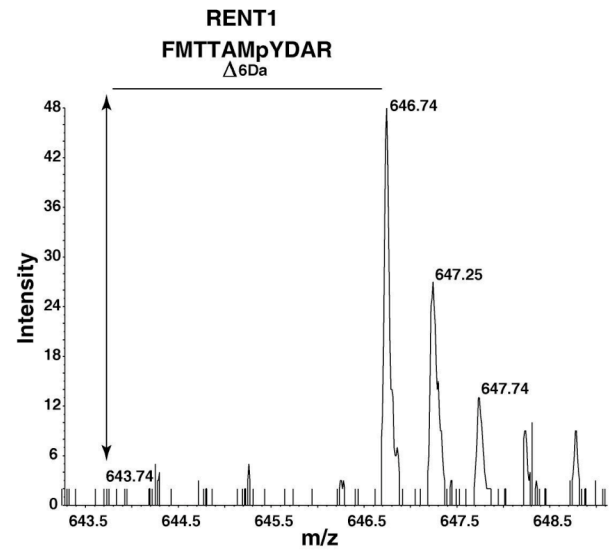
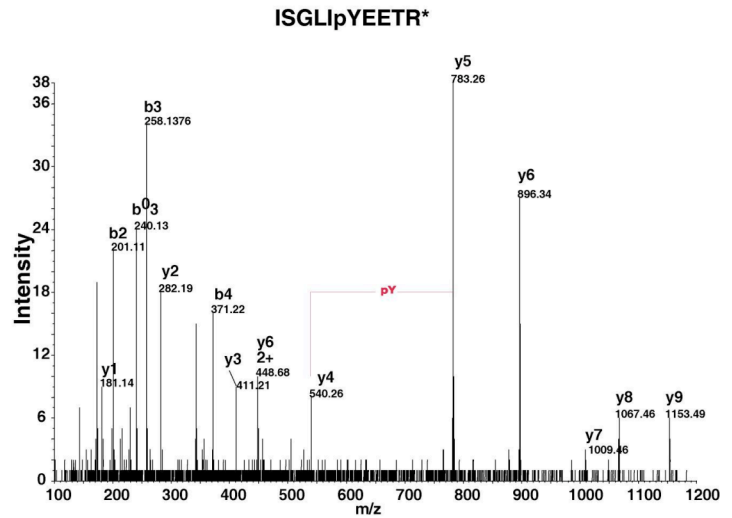
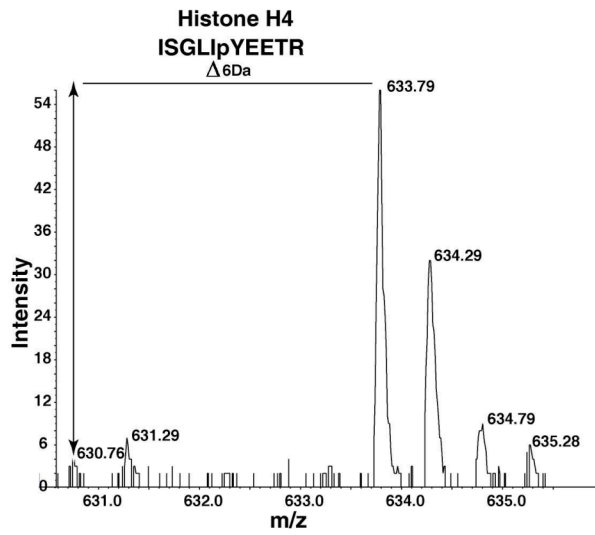
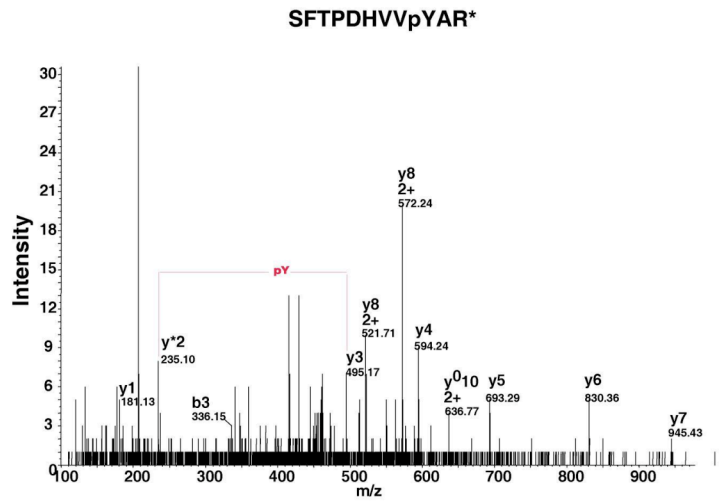
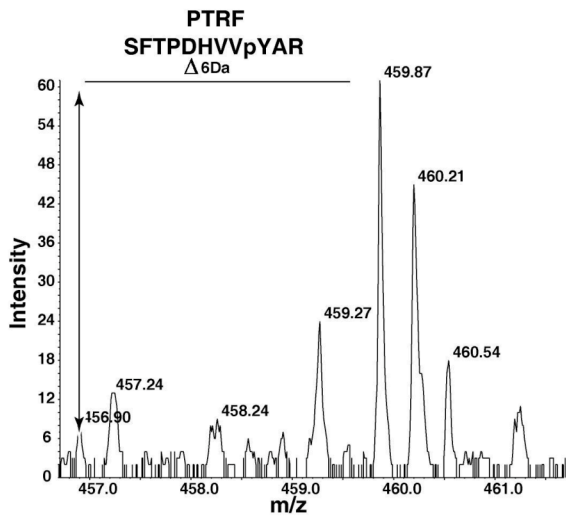




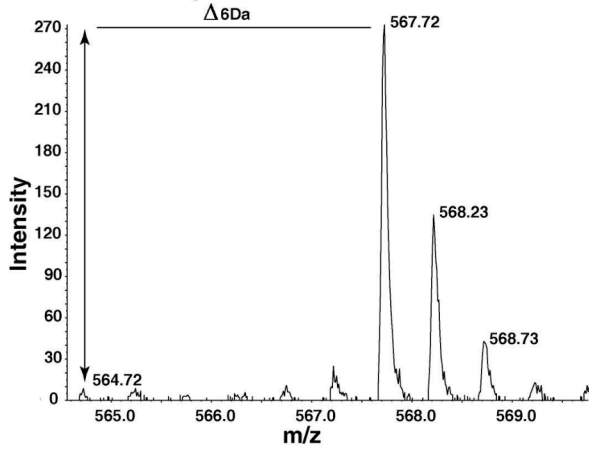




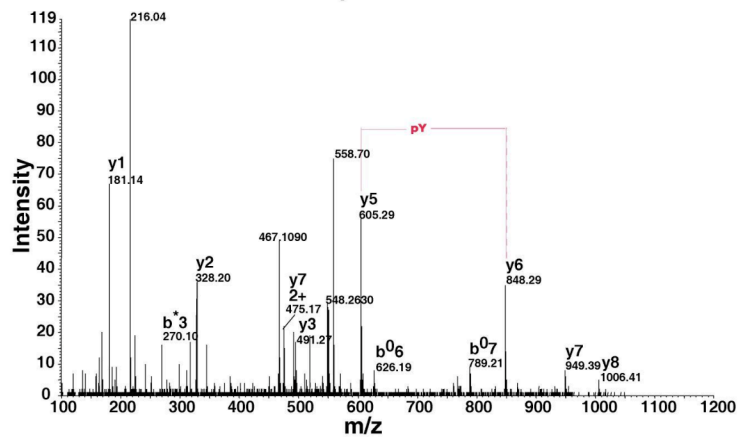




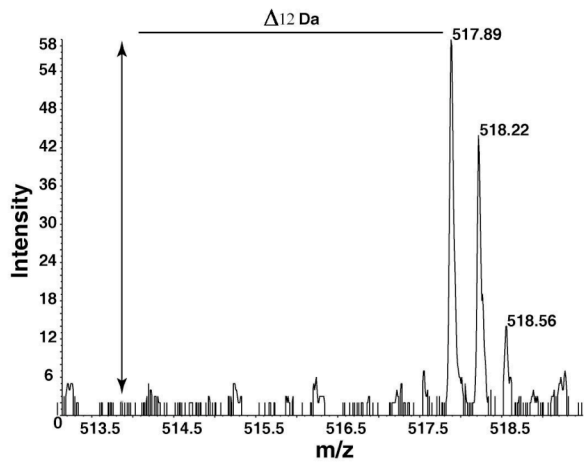
Eukaryotic translation initiation factor 3
QGTpYGGYFR



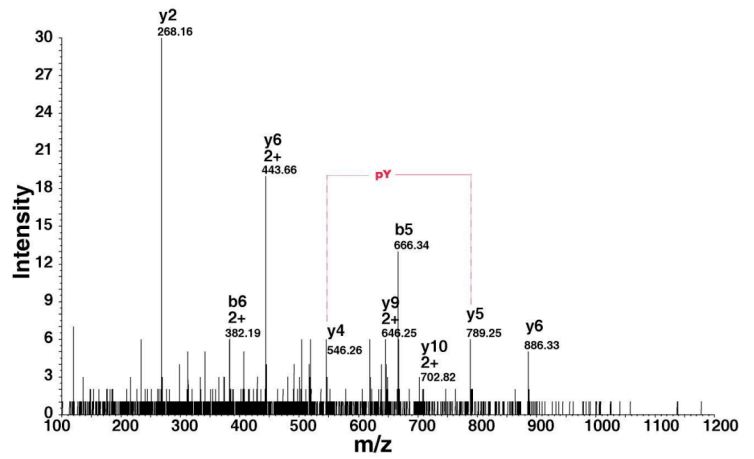
QGTpYGGYFR*



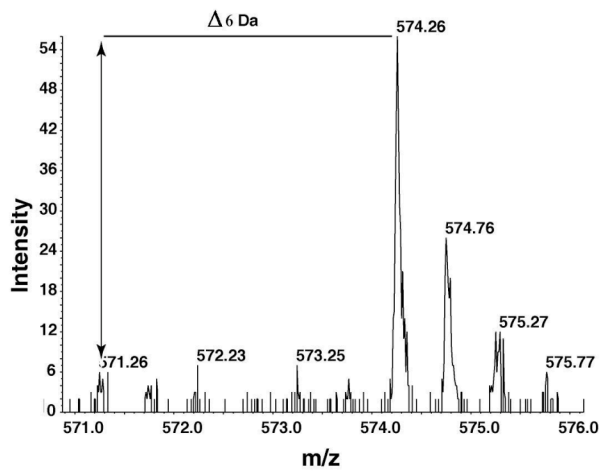
Clathrin heavy chain
FLRENpYYDSR



FLRENpYYDSR*



DNA damage - binding protein 1
TVPLpYESPR



TVPLpYESPR*

