

Supplemental Data

Changes in *bicoid* mRNA Anchoring

Highlight Conserved Mechanisms

during the Oocyte-to-Embryo Transition

Timothy T. Weil, Richard Parton, Ilan Davis, and Elizabeth R. Gavis

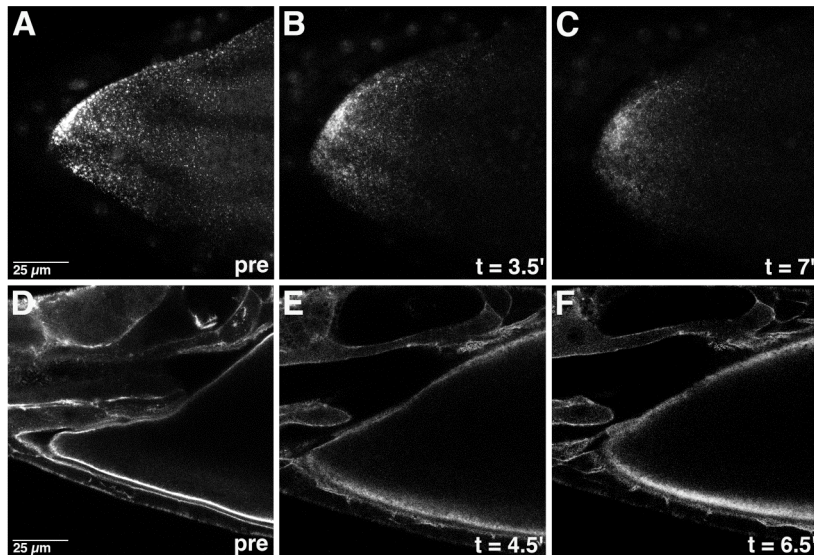


Figure S1. Temporal correlation between *bcd* mRNA and cortical actin redistribution during egg activation.

(A-C) Confocal Z-series projections of the anterior of an oocyte expressing *bcd*GFP* prior to activation in vitro (A), 3.5 minutes after the onset of activation in vitro (B), and 7 minutes after the onset of activation in vitro (C). (D-F) Single confocal sections of the anterior of an oocyte expressing GFP-moe prior to activation (D), 4.5 minutes after the onset of activation in vitro (E), and 6.5 minutes after the onset of activation in vitro (F).