

SUPPLEMENTAL DATA

A NOVEL INTERACTION LINKING THE FAS-II AND PDIM BIOSYNTHETIC PATHWAYS

Nicole A. Kruh,^{1,2} Janine G. Borgaro,² Béla P. Ruzsicska,² Hua Xu² and Peter J. Tonge^{1,2}

From the Graduate Program in Molecular Genetics and Microbiology¹ and the Institute Department of Chemical Biology & Drug Discovery,² Stony Brook University, Stony Brook, NY 11794-3400

Running title: Interaction of KasA and PpsB

Address correspondence to: Peter J. Tonge, Phone: 631-632-7907 Fax: 631-632-7934; E-mail: peter.tonge@sunysb.edu

SUPPLEMENTAL FIGURES

Figure S1: Mass spectrum of B4M-CoA: m/z region 300-1,200. [B4M-CoA + H]⁺, 1045.1 calculated 1044.1 and [B4M-CoA + 2H]⁺, 523.2, calculated 522.1

Figure S2: LC/MS of B4M-AcpM. a) Chromatogram of the reaction mixture. Mass spectra of b) The peak at 23.318 and c) The peak at 24.495 over the m/z 300-1,500 region. Giving average mass assignments of [apo-AcpM + H]⁺, 15079.1 calculated, 15078.2 and [B4M-AcpM + H]⁺, 15695.7 calculated, 15695.5 respectively.

Supplemental Data

Figure S1

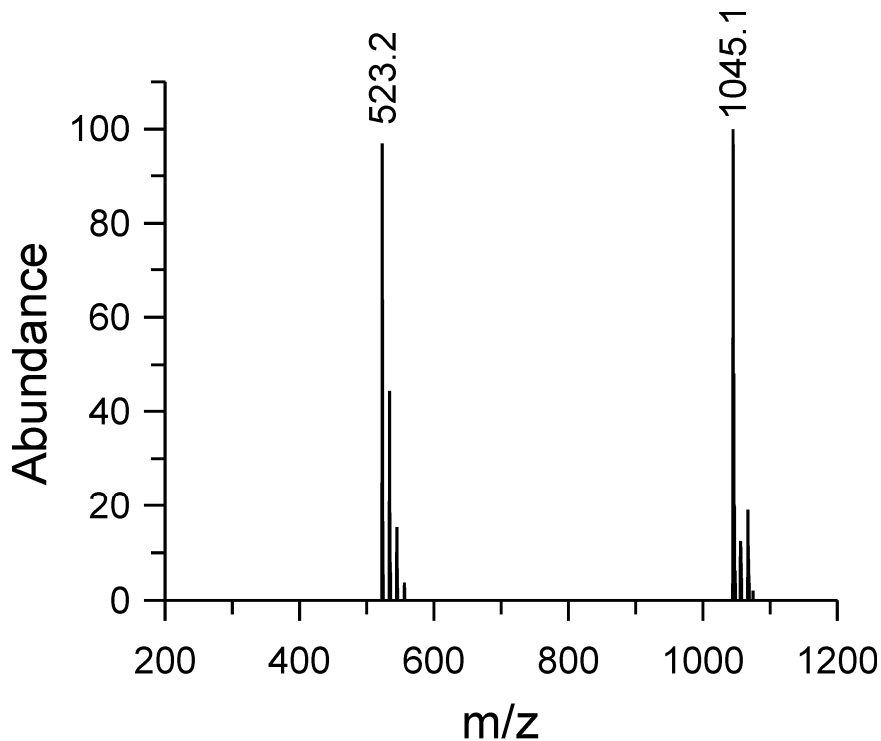


Figure S2

