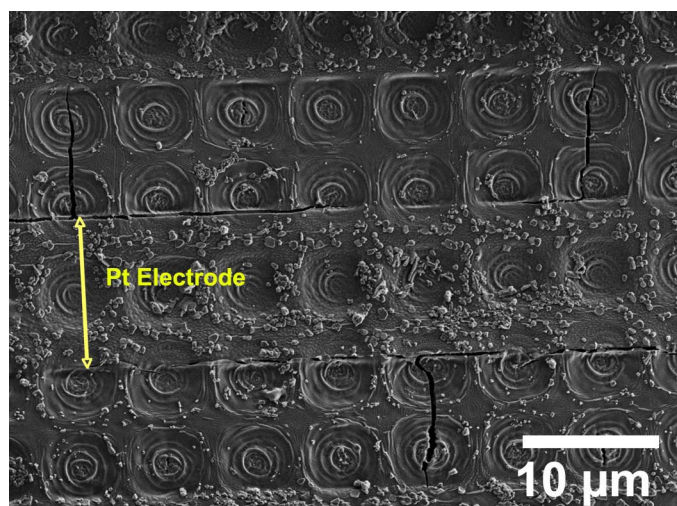


# Supporting Information

Nam *et al.* 10.1073/pnas.0711620105



**Fig. S1.** Scanning Electron Microscopy (SEM) image of the stamped microbattery electrode after 25 cycles at various charging rate. We disassembled the battery after the discharging and dried the liquid electrolyte inside the glove box. It clearly shows that microbattery electrodes are structurally stable and did not separate from the Pt electrodes during cycle.

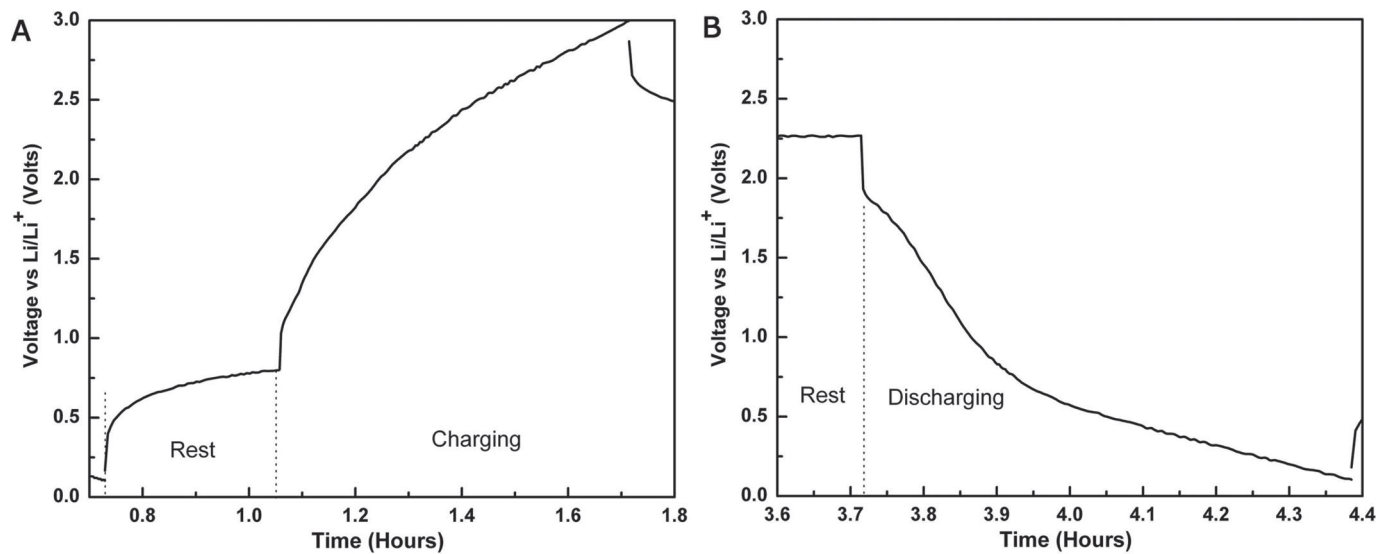


Fig. S2. Charging (A) and discharging (B) curve at a rate of 255 nA. More detailed graphs of the charging (0.7 to 1.8 h) and discharging curve (3.6–4.4 h) of Fig. 4C demonstrate that microbattery electrodes exhibit a similar charging/discharging curve regardless of the charging rate.