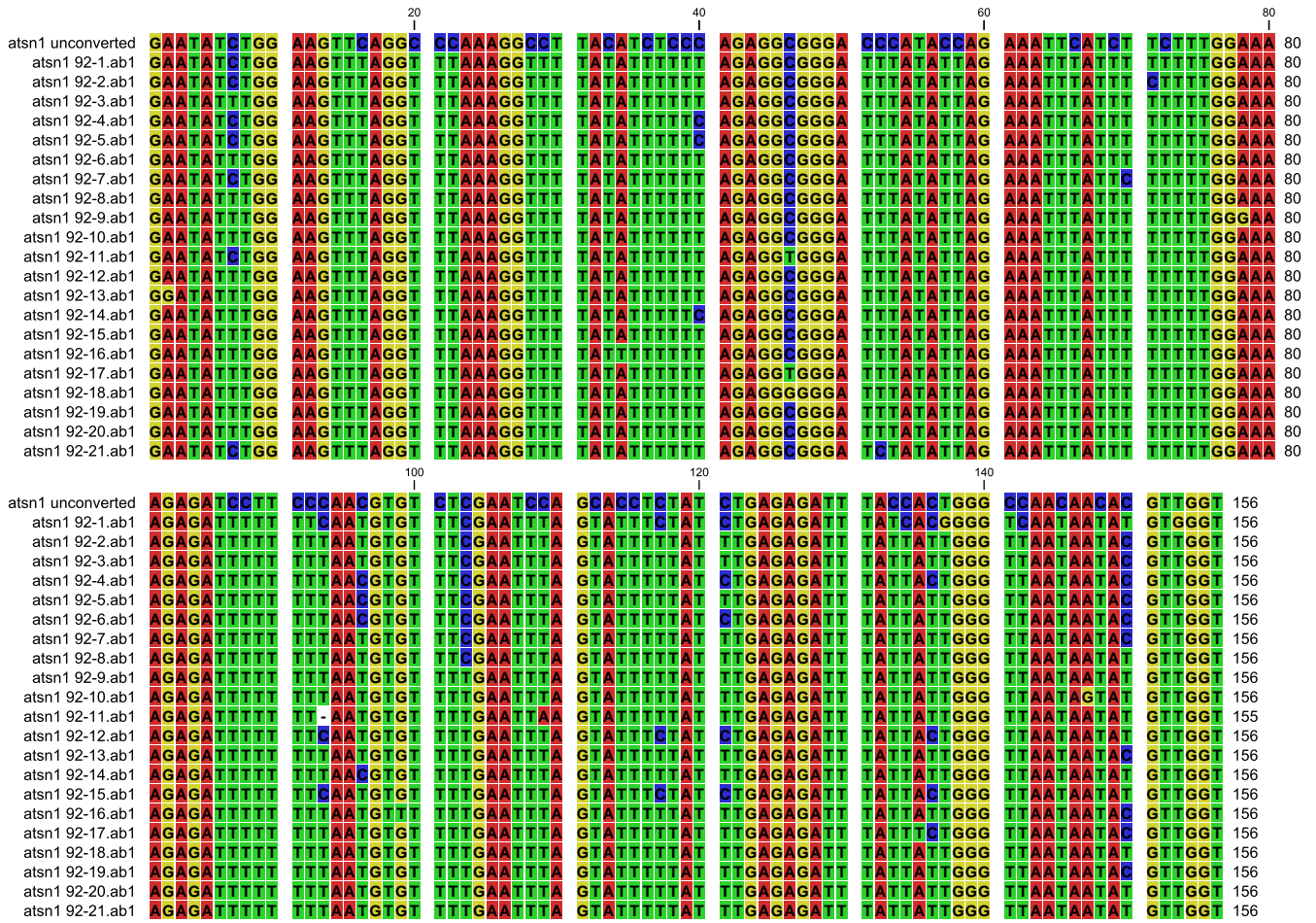


		20		40		60		80	
AtSN1 uncovered	G A A T A T C T G G	A A G T T C A G G C	C C A A A G G C C C	T A C A T T T C C T	A G A G G G G G G A	T C C A C A C G A G	A A A T T C A T C T	C T T T T G G A G A	80
AtSN1 cmt3-1.ab1	G A A T A T C T G G	A A G T T T A G G T	T T A A A G G T T T	T A T A T C T T T T	A G A G G T G G G A	T T T A T A T T A G	A A A T T T A T T T	T T T T T G G A A A	80
AtSN1 cmt3-2.ab1	G A A T A T C T G G	A A G T T C A G G T	C C A A A G G C C T	T A C A T C T C C C	A G A G G T G G G A	C T C A T A C C A G	A A A T T C A T - T	T T T T T G G A A A	79
AtSN1 cmt3-3.ab1	G A A T A T C T G G	A A G T T C A G G C	C C A A A G G C C T	T A C A T C T C C C	A G A G G G G G G A	C C C A T A C C A G	A A A T T C A T C T	T C T T T G G A A A	80
AtSN1 cmt3-4.ab1	G A A T A T C T G G	A A G T T C A G G T	C C A A A G G C C T	T A C A T T T T T T	A G A G G G G G G A	T T T A T A T T A G	A G A T T C A T C T	T C T T T G G A A A	80
AtSN1 cmt3-5.ab1	G A A T A T T T G G	A A - C C C G G G T	T C A A A G G T T T	T A T T T T T T T T	A G A G G G G G G A	T T T G T T T T A G	A A A T C T A - C T	T T T T T G G A A A	78
AtSN1 cmt3-6.ab1	G A A T A T T T G G	A A G T C T A G G T	C T A A A G C T T T	T C T A T T T C T T	A G A G G T G G G A	T T T C T A T T A G	A A A T T T A T T T	T T T T T G G A C A	80
AtSN1 cmt3-7.ab1	G A A T A T T T G G	A A G T T T A G G T	C T A A A G G T T T	T A T A T T T T T T	A G A G G G G G G A	T T T A T A T T A G	A A A T T T A T T T	T T T T T G G A A A	80
AtSN1 cmt3-8.ab1	G A A T A T T T G G	A A G T T T A G G T	T T A A A G G T C T	T A T A T T T T T T	A G A G G G G G G A	T T T A T A T T A G	A A A T T T A T C T	T T T T T G G A A A	80
AtSN1 cmt3-9.ab1	G A A T A T T T G G	A A G T T T A G G T	T T A A A G G T T T	T A T A T T T T T T	A G A G G G G G G A	T T T A T A T T A G	A A A T T T A T T T	T T T T T G G A A A	80
AtSN1 cmt3-10.ab1	G A A T A T T T G G	A A G T T T A G G T	T T A A A G G T T T	T A T A T T T T T T	A G A G G T G G G A	T T T A T A T T A G	A A A T T T A T T T	T T T T T G G A A A	80
AtSN1 cmt3-11.ab1	G A G G A T T G G A	A A G T T T C A G C	C C A A A G A T T T T	T A T - T T T T T T	A A A G G G G G G G	T T T T A T T T T G	A A A T T T T T T T	T T T T T A G A C A	79
AtSN1 cmt3-12.ab1	G A A T A T T T G G	A A G T T T A G G T	T T A A A G G T T T	T A T A T T T T T T	A G A G G G G G G A	T T T G T A T T A G	A A A T C T A T T T	T T T T T - G G A A A	79
AtSN1 cmt3-13.ab1	G A A T A T T T G G	A A G T T T A G G T	T T A A A G G T T T	T A T A T T T T T T	A G A G G G G G G A	T T T A T A T T A G	A A A T T T A T T T	T T T T T G G A A A	80
		100		120		140			
AtSN1 uncovered	A G A G A T C C C T	C C C A A G G T G C	C T G A A T C C C A	G C A C C T C C A C	C T G G G A G A T T	T A C C A C T G G G	C C A A C A A C A C	G T T G G T	156
AtSN1 cmt3-1.ab1	A G A G A T T T T T	T T T A A T G T G T	T T T G A A T T T A	G T A T T T T T A T	C T G A G A G A T T	T A T T A T T G G G	C C A A C A A T A C	G T T G G T	156
AtSN1 cmt3-2.ab1	A G A G A T C C T T	C C C A A T G T G T	C T G A A T C C A	G C A C C T C T A T	C T G A G A G A T T	T A C C A C T G G G	C C A A C A A C A T	G T T G G T	155
AtSN1 cmt3-3.ab1	A G A G A T C C T T	C C C A A G G T G T	C T G A A T C C A	G C A C C T C T A T	C T G A G A G A T T	T A C C A C T G G G	T C A A C A A C A C	G T T G G T	156
AtSN1 cmt3-4.ab1	A G A G A T C C T T	C C C A A T G T G T	C T G A A T T C A	G C A T C T C T A T	T T G A G A G A T T	T A C C A T T G G G	C C A A C A A T A C	G T T G G T	156
AtSN1 cmt3-5.ab1	A G A G A T T T T T	T T T A A T G T G C	T T T G A A T C T A	G T A T T T T T A T	T T G A G A G A T T	T A C T A T T G C G	T T A A T A A C A T	A C T G G T	154
AtSN1 cmt3-6.ab1	A G A G A T T T T T	T T T A A T G T G T	T T T G A A T C C A	G T A T T T T T A T	T T G A G A G A T T	T A T T A T T G G G	T T A A C A A T A T	G C T G G T	156
AtSN1 cmt3-7.ab1	A G A G A T T T T T	T T T A A T G T G T	T T T G A A T T T A	G T A T T T T T A T	T T G A G A G A T T	T A T T A T T G G G	T T A A T A A T A T	G T T G G T	156
AtSN1 cmt3-8.ab1	A G A G A T C C T T	C C C A A T G T G T	C T G A A T C C A	G A C C G T T T A T	T T G A G A G A T T	T A T T A T T G G G	T C A A T A A T A C	G T T G G T	156
AtSN1 cmt3-9.ab1	A G A G A C T T T T	T T T A A T G T G T	T T T G A A T T T A	G T A T T T T T A T	T T G A G A G A T T	T A T T A T T G G G	T T A A T A A T A C	G T T G G T	156
AtSN1 cmt3-10.ab1	A G A G A T T T T T	T T T A A C G T G T	T T T G A A T T T A	G T A T C T T T A T	C T G A G A G A T T	T A T T A T T G G G	T T A A T A A T A C	G T T G G T	156
AtSN1 cmt3-11.ab1	G A A G T T T T T T	T T A A A T G G T T	T T A A A G A T T T C	G T A T T T T T - T	T T G A G A G A A T	T T T G T C T G G A	T T A A A A C T A G	G T A G A G	154
AtSN1 cmt3-12.ab1	A G A G A T T T T T	T T T A A T G T G T	T T T G A A T T T A	G T A T T T T T A T	T T G A G A G A T T	T A T T A T T G G G	T T A A T A A T A T	G T T G G T	155
AtSN1 cmt3-13.ab1	A G A G A T T T T T	T T T A A G T G T	T T T G A A T T T A	G T A T T T T T A T	C T G A G A G A T T	T A T T A T T G G G	T T A A T A A T A T	G T T G G T	156




```

meaisr TCCAAAATTC GGTTAGATTT CACAAGTCA TATTACG 276
mea 2-1.ab1 TTTAAAATTC GGTTAGATTT TATAAGTTA TATTACG 276
mea 2-2.ab1 TTTAAAATTC GGTTAGATTT TATAAGTTA TATTACG 276
mea 2-3.ab1 TTTAAAATTC GGTTAGATTT TATAAGTTA TATTACG 276
mea 2-4.ab1 TCCAAAATTC GGTTAGATTT CACAAGTCA TATTACG 276
mea 2-5.ab1 TTTAAAATTC GGTTAGATTT TACAAGTCA TATTACG 276
mea 2-6.ab1 TTTAAAATTC GGTTAGATTT TATAAGTTA TATTACG 276
mea 2-7.ab1 TTTAAAATTC GGTTAGATTT TACAAGTCA TATTACG 276
mea 2-8.ab1 TTTAAAATTC GGTTAGATTT TATAAGTTA TATTACG 276
mea 2-9.ab1 TTTAAAATTC GGTTAGATTT TATAAGTTA TATCATG 276
mea 2-10.ab1 TTTAAAATTC GGTTAGATTT TATAAGTTA TATTATG 275
mea 2-11.ab1 TTTAAAATTC GGTTAGATTT TATAAGTTA TATTACG 277
mea 2-12.ab1 TTTAAAATTC GGTTAGATTT TATAAGTTA TATTACG 276
mea 2-13.ab1 TTTAAAATTC GGTTAGATTT TATAAGTTA TATTACG 275
mea 2-14.ab1 TTTAAAATTC GGTTAGATTT TATAAGTTA TATTACG 276
mea 2-15.ab1 TTTAAAATTC GGTTAGATTT TATAAGTTA TATTACG 276
mea 2-16.ab1 TTTAAAATTC GGTTAGATTT TATAAGTTA TATTACG 276
mea 2-17.ab1 TTTAAAATTC GGTTAGATTT TATAAGTTA TATTACG 276
mea 2-18.ab1 TTTAAAATTC GGTTAGATTT TATAAGTTA TATTACG 276
mea 2-19.ab1 TTTAAAATTC GGTTAGATTT TATAAGTTA TATTACG 276
mea 2-20.ab1 TTTAAAATTC GGTTAGATTT TATAAGTTA TATTACG 276
mea 2-21.ab1 TTTAAAATTC GGTTAGATTT TATAAGTTA TATTACG 276

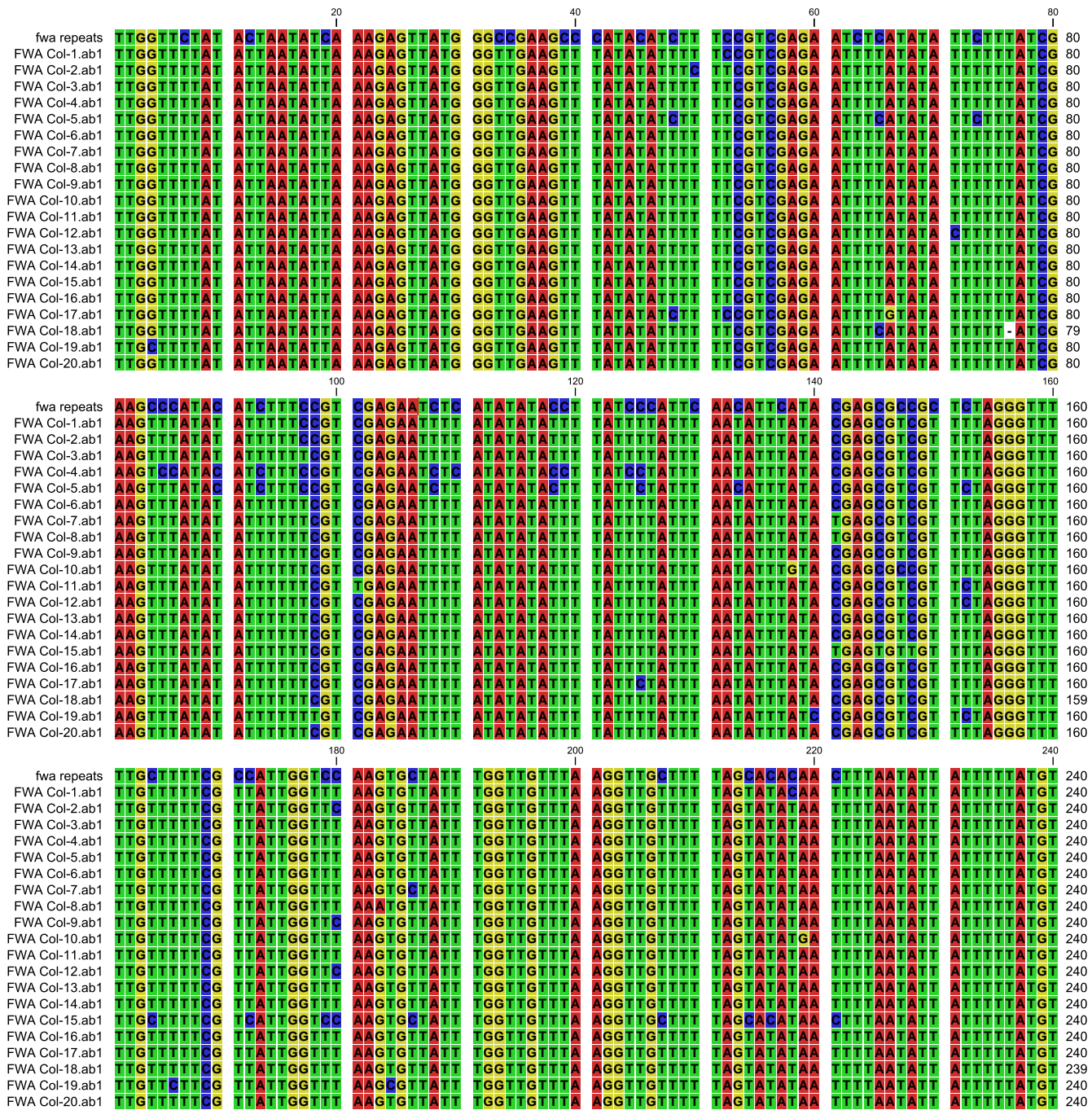
```



```

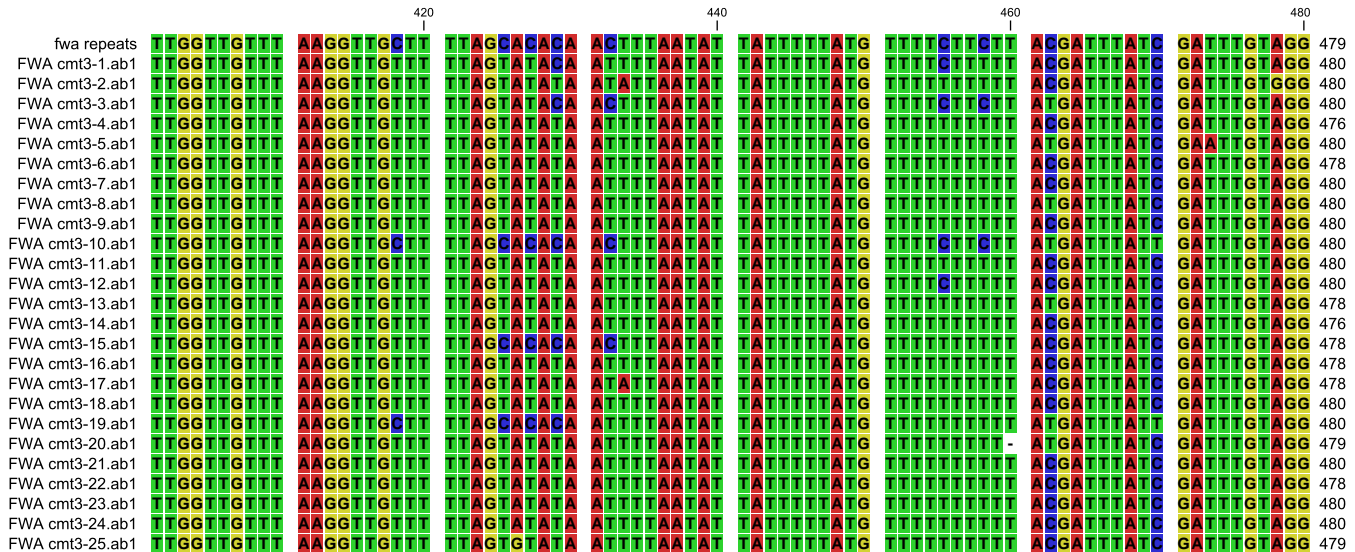
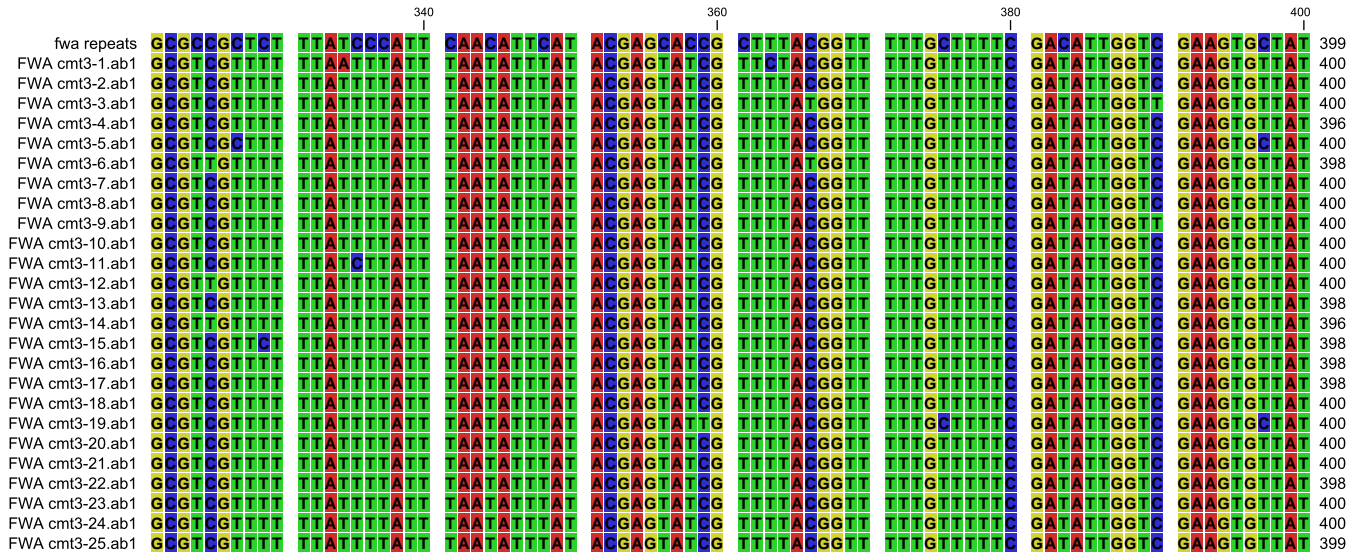
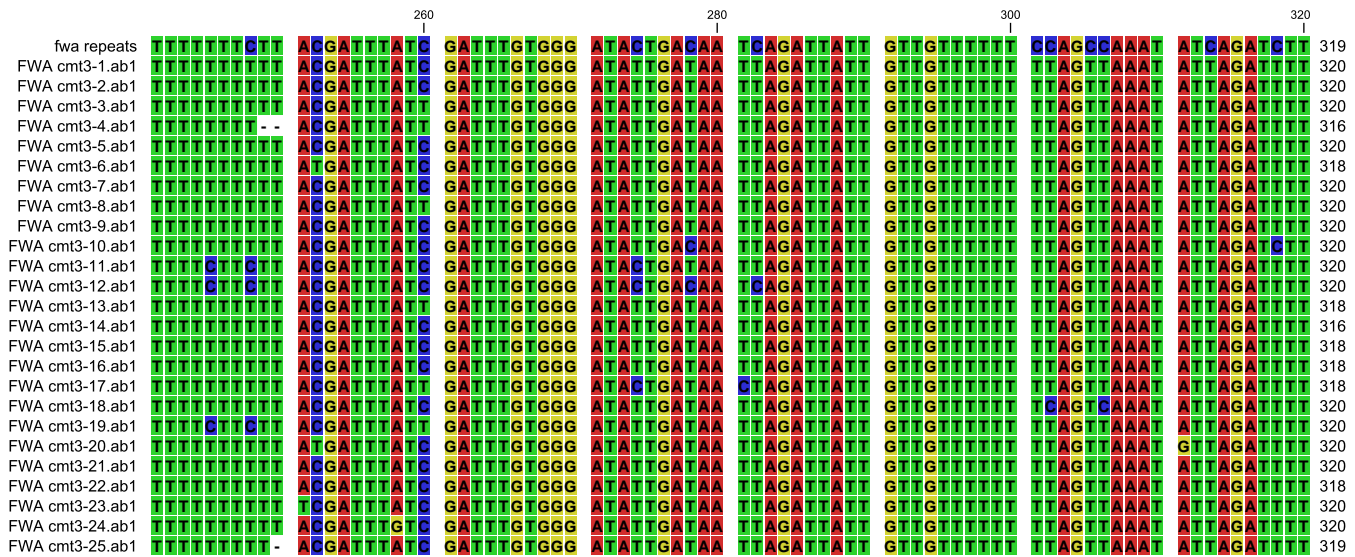
mea isr unconverted CCAAATCCG GTTAGATTTT ACAA GTCAI ATTACG 276
mea 492-1.ab1 TTA AAAATTCCG GTTAGATTTT ATAA GTTTAT ATTACG 276
mea 492-2.ab1 TTA AAAATTCCG GTTAGATTTT ATAA GTTTAT ATTACG 276
mea 492-3.ab1 TTA AAAATTCCG GTTAGATTTT ATAA GTTTAT ATTACG 276
mea 492-4.ab1 TTA AAAATTCCG GTTAGATTTT ATAA GTTTAT ATTACG 276
mea 492-5.ab1 TTA AAAATTCCG GTTAGATTTT ATAA GTTTAT GTTTATG 276
mea 492-6.ab1 TTA AAAATTCCG GTTAGATTTT ATAA GTTTAT ATTACG 276
mea 492-7.ab1 TTA AAAATTCCG GTTAGATTTT ATAA GTTTAT ATTACG 276
mea 492-8.ab1 TTA AAAATTCCG GTTAGATTTT ATAA GTTTAT ATTACG 276
mea 492-9.ab1 TTA AAAATTCCG GTTAGATTTT ATAA GTTTAT ATTACG 276
mea 492-10.ab1 TTA AAAATTCCG GTTAGATTTT ATAA GGTAT ATTACG 275
mea 492-11.ab1 TTA AAAATTCCG GTTAGATTTT ATAA GTTTAT ATTACG 276
mea 492-12.ab1 TTA AAAATTCCG GTTAGATTTT ATAA GTTTAT ATTACG 275
mea 492-13.ab1 TTA AAAATTCCG GTTAGATTTT ATAA GTTTAT ATTACG 276
mea 492-14.ab1 TTA AAAATTCCG GTTAGATTTT ATAA GTTTAT ATTACG 276
mea 492-15.ab1 TTA AAAATTCCG GTTAGATTTT ATAA GTTTAT ATTACG 276
mea 492-16.ab1 TTA AAAATTCCG GTTAGATTTT ATAA GTTTAT ATTACG 276
mea 492-17.ab1 TTA AAAATTCCG GTTAGATTTT ATAA GTTTAT ATTACG 276
mea 492-18.ab1 TTA AAAATTCCG GTTAGATTTT ATAA GTTTAT ATTACG 276
mea 492-19.ab1 TTA AAAATTCCG GTTAGATTTT ATAA GTTTAT ATTACG 276
mea 492-20.ab1 TTA AAAATTCCG GTTAGATTTT ATAA GTTTAT ATTACG 276
mea 492-21.ab1 TTA AAAATTCCG GTTAGATTTT ATAA GTTTAT ATTACG 276
mea 492-22.ab1 TTA AAAATTCCG GTTAGATTTT ATAA GTTTAT ATTACG 276
mea 492-23.ab1 TTA AAAATTCCG GTTAGATTTT ATAA GTTTAT ATTACG 276
mea 492-24.ab1 TTA AAAATTCCG GTTAGATTTT ATAA GTTTAT ATTACG 276

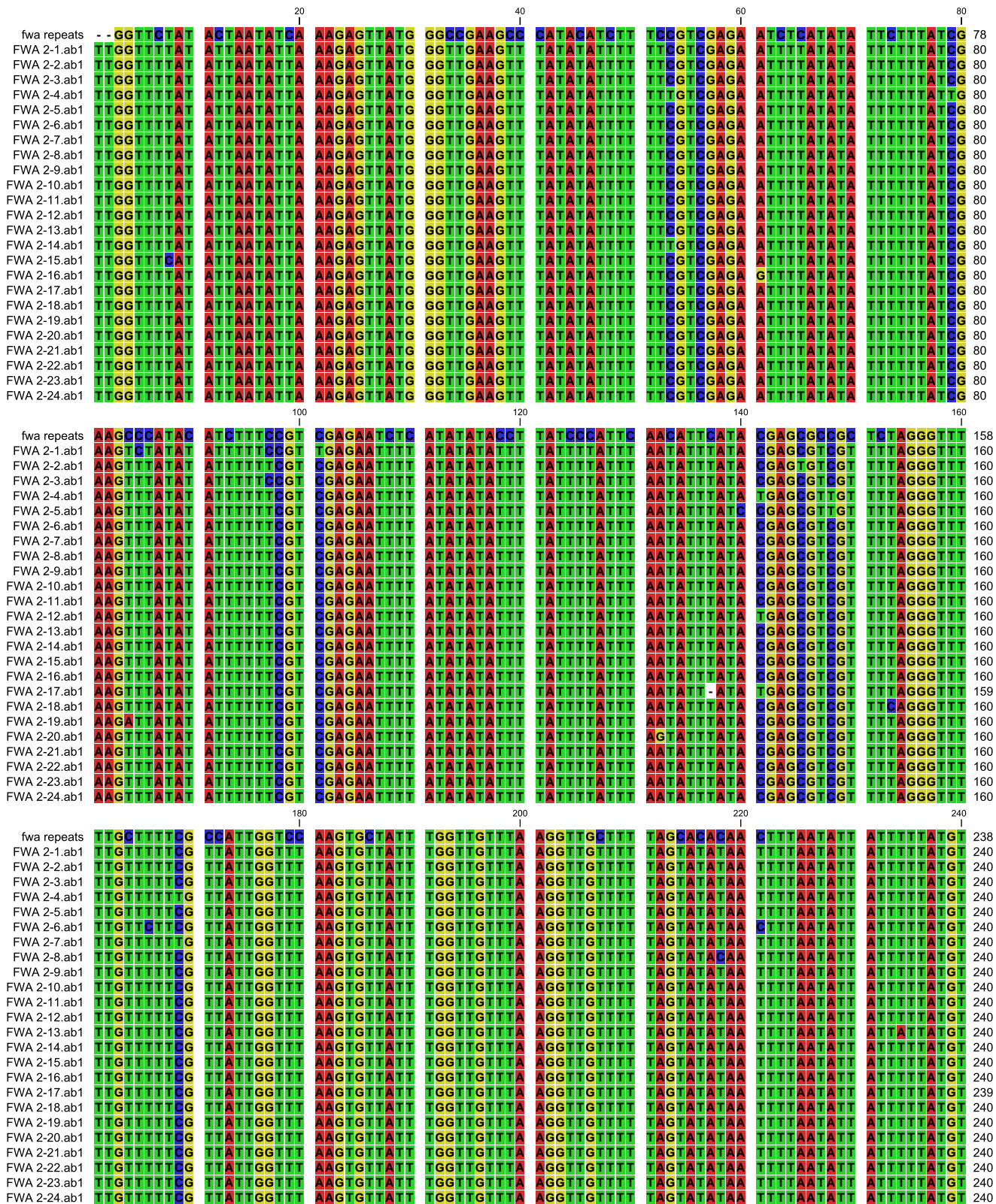
```



		500		520		540		560											
fwa repeats	ATAC	GGAA	TTGA	TTTT	GTTG	TTTT	TTAG	CCAAAA	ATCA	GATTTT	TTTT	ATC	TTTT	GTTT	AGAGAA	TGAT	TTTT	GGT	560
FWA Col-1.ab1	ATATT	GATAA	TTAGA	TTTTT	GTTG	TTTTT	TTAG	TTGAAA	ATTAG	ATTTT	TTTT	AT	ATTTT	GTTT	AGAGAA	TGAT	TTTT	GGT	557
FWA Col-2.ab1	ATATT	GATAA	TTAGA	TTTTT	GTTG	TTTTT	TTAG	TTGAAA	ATTAG	ATTTT	TTTT	AT	ATTTT	GTTT	AGAGAA	TGAT	TTTT	GGT	560
FWA Col-3.ab1	ATATT	GATAA	TTAGA	TTTTT	GTTG	TTTTT	TTAG	TTGAAA	ATTAG	ATTTT	TTTT	AT	ATTTT	GTTT	AGAGAA	TGAT	TTTT	GGT	558
FWA Col-4.ab1	ATATT	GATAA	TTAGA	TTTTT	GTTG	TTTTT	TTAG	TTGAAA	ATTAG	ATTTT	TTTT	AT	ATTTT	GTTT	AGAGAA	TGAT	TTTT	GGT	560
FWA Col-5.ab1	ATAC	GGAA	TTGA	TTTT	GTTG	TTTT	TTAG	TTGAAA	ATTAG	ATTTT	TTTT	AT	ATTTT	GTTT	AGAGAA	TGAT	TTTT	GGT	560
FWA Col-6.ab1	ATAC	GGAA	TTGA	TTTT	GTTG	TTTT	TTAG	TTGAAA	ATTAG	ATTTT	TTTT	AT	ATTTT	GTTT	AGAGAA	TGAT	TTTT	GGT	559
FWA Col-7.ab1	ATATT	GATAA	TTAGA	TTTTT	GTTG	TTTTT	TTAG	TTGAAA	ATTAG	ATTTT	TTTT	AT	ATTTT	GTTT	AGAGAA	TGAT	TTTT	GGT	559
FWA Col-8.ab1	ATATT	GATAA	TTAGA	TTTTT	GTTG	TTTTT	TTAG	TTGAAA	ATTAG	ATTTT	TTTT	AT	ATTTT	GTTT	AGAGAA	TGAT	TTTT	GGT	560
FWA Col-9.ab1	ATATT	GATAA	TTAGA	TTTTT	GTTG	TTTTT	TTAG	TTGAAA	ATTAG	ATTTT	TTTT	AT	ATTTT	GTTT	AGAGAA	TGAT	TTTT	GGT	560
FWA Col-10.ab1	ATAC	GGAA	TTGA	TTTT	GTTG	TTTT	TTAG	TTGAAA	ATTAG	ATTTT	TTTT	AT	ATTTT	GTTT	AGAGAA	TGAT	TTTT	GGT	560
FWA Col-11.ab1	ATATT	GATAA	TTAGA	TTTTT	GTTG	TTTTT	TTAG	TTGAAA	ATTAG	ATTTT	TTTT	AT	ATTTT	GTTT	AGAGAA	TGAT	TTTT	GGT	560
FWA Col-12.ab1	ATATT	GATAA	TTAGA	TTTTT	GTTG	TTTTT	TTAG	TTGAAA	ATTAG	ATTTT	TTTT	AT	ATTTT	GTTT	AGAGAA	TGAT	TTTT	GGT	559
FWA Col-13.ab1	ATATT	GATAA	TTAGA	TTTTT	GTTG	TTTTT	TTAG	TTGAAA	ATTAG	ATTTT	TTTT	AT	ATTTT	GTTT	AGAGAA	TGAT	TTTT	GGT	559
FWA Col-14.ab1	ATATT	GATAA	TTAGA	TTTTT	GTTG	TTTTT	TTAG	TTGAAA	ATTAG	ATTTT	TTTT	AT	ATTTT	GTTT	AGAGAA	TGAT	TTTT	GGT	559
FWA Col-15.ab1	ATATT	GATAA	TTAGA	TTTTT	GTTG	TTTTT	TTAG	TTGAAA	ATTAG	ATTTT	TTTT	AT	ATTTT	GTTT	AGAGAA	TGAT	TTTT	GGT	560
FWA Col-16.ab1	ATATT	GATAA	TTAGA	TTTTT	GTTG	TTTTT	TTAG	TTGAAA	ATTAG	ATTTT	TTTT	AT	ATTTT	GTTT	AGAGAA	TGAT	TTTT	GGT	559
FWA Col-17.ab1	ATATT	GATAA	TTAGA	TTTTT	GTTG	TTTTT	TTAG	TTGAAA	ATTAG	ATTTT	TTTT	AT	ATTTT	GTTT	AGAGAA	TGAT	TTTT	GGT	560
FWA Col-18.ab1	ATAC	GGAA	TTGA	TTTT	GTTG	TTTT	TTAG	TTGAAA	ATTAG	ATTTT	TTTT	AT	ATTTT	GTTT	AGAGAA	TGAT	TTTT	GGT	559
FWA Col-19.ab1	ATATT	GATAA	TTAGA	TTTTT	GTTG	TTTTT	TTAG	TTGAAA	ATTAG	ATTTT	TTTT	AT	ATTTT	GTTT	AGAGAA	TGAT	TTTT	GGT	558
FWA Col-20.ab1	ATATT	GATAA	TTAGA	TTTTT	GTTG	TTTTT	TTAG	TTGAAA	ATTAG	ATTTT	TTTT	AT	ATTTT	GTTT	AGAGAA	TGAT	TTTT	GGT	559

fwa repeats	TAAGGG	CGAT	TTG	573
FWA Col-1.ab1	TAAGGG	CGAA	TTG	570
FWA Col-2.ab1	TAAGGG	CGAA	TTG	573
FWA Col-3.ab1	TAAGGG	CGAA	TTG	571
FWA Col-4.ab1	TAAGGG	CGAA	TTG	573
FWA Col-5.ab1	TAAGGG	CGAA	TTG	573
FWA Col-6.ab1	TAAGGG	CGAA	TTG	572
FWA Col-7.ab1	TAAGGG	CGAA	TTG	572
FWA Col-8.ab1	TAAGGG	CGAA	TTG	573
FWA Col-9.ab1	TAAGGG	CGAA	TTG	573
FWA Col-10.ab1	TAAGGG	CGAA	TTG	573
FWA Col-11.ab1	TAAGGG	CGAA	TTG	573
FWA Col-12.ab1	TAAGGG	CGAA	TTG	572
FWA Col-13.ab1	TAAGGG	CGAA	TTG	572
FWA Col-14.ab1	TAAGGG	CGAA	TTG	572
FWA Col-15.ab1	TAAGGG	CGAA	TTG	573
FWA Col-16.ab1	TAAGGG	CGAA	TTG	572
FWA Col-17.ab1	TAAGGG	CGAA	TTG	573
FWA Col-18.ab1	TAAGGG	CGAA	TTG	572
FWA Col-19.ab1	TAAGGG	CGAA	TTG	571
FWA Col-20.ab1	TAAGGG	CGAA	TTG	572





440 480 520

fw repeats
Consensus

FWA492-2.ab1
FWA492-3.ab1
FWA492-4.ab1
FWA492-5.ab1
FWA492-6.ab1
FWA492-7.ab1
FWA492-8.ab1
FWA492-9.ab1
FWA492-10.ab1

500 520 540 560

fw repeats
Consensus

FWA492-2.ab1
FWA492-3.ab1
FWA492-4.ab1
FWA492-5.ab1
FWA492-6.ab1
FWA492-7.ab1
FWA492-8.ab1
FWA492-9.ab1
FWA492-10.ab1

580

fw repeats
Consensus

FWA492-2.ab1
FWA492-3.ab1
FWA492-4.ab1
FWA492-5.ab1
FWA492-6.ab1
FWA492-7.ab1
FWA492-8.ab1
FWA492-9.ab1
FWA492-10.ab1



		420		440		460		480	
fwa repeats	A TTT GGT TGT	TTAA GGT TGT	TTTT AGT ATA	TAAT TTT AAT	ATT AT TTT TA	TG TTT TTT TTT	TTA TGAT TTA	TTGA TTT GTA	477
FWA 9-1L.ab1	A TTT GGT TGT	TTAA GGT TGT	TTTT AGT ATA	TAAT TTT AAT	ATT AT TTT TA	TG TTT TTT TTT	TTA TGAT TTA	TTGA TTT GTA	480
FWA 9-2L.ab1	A TTT GGT TGT	TTAA GGT TGT	TTTT AGT ATA	TAAT TTT AAT	ATT AT TTT TA	TG TTT TTT TTT	TTA TGAT TTA	TTGA TTT GTA	479
FWA 9-3L.ab1	A TTT GGT TGT	TTAA GGT TGT	TTTT AGT ATA	TAAT TTT AAT	ATT AT TTT TA	TG TTT TTT TTT	TTA TGAT TTA	TTGA TTT GTA	480
FWA 9-4L.ab1	A TTT GGT TGT	TTAA GGT TGT	TTTT AGT ATA	TAAT TTT AAT	ATT AT TTT TA	TG TTT TTT TTT	TTA TGAT TTA	TTGA TTT GTA	480
FWA 9-5L.ab1	A TTT GGT TGT	TTAA GGT TGT	TTTT AGT ATA	TAAT TTT AAT	ATT AT TTT TA	TG TTT TTT TTT	TTA TGAT TTA	TTGA TTT GTA	479
FWA 9-6L.ab1	A TTT GGT TGT	TTAA GGT TGT	TTTT AGT ATA	TAAT TTT AAT	ATT AT TTT TA	TG TTT TTT TTT	TTA TGAT TTA	TTGA TTT GTA	480
FWA 9-7L.ab1	A TTT GGT TGT	TTAA GGT TGT	TTTT AGT ATA	TAAT TTT AAT	ATT AT TTT TA	TG TTT TTT TTT	TTA TGAT TTA	TTGA TTT GTA	480
FWA 9-8L.ab1	A TTT GGT TGT	TTAA GGT TGT	TTTT AGT ATA	TAAT TTT AAT	ATT AT TTT TA	TG TTT TTT TTT	TTA TGAT TTA	TTGA TTT GTA	479
FWA 9-9L.ab1	A TTT GGT TGT	TTAA GGT TGT	TTTT AGT ATA	TAAT TTT AAT	ATT AT TTT TA	TG TTT TTT TTT	TTA TGAT TTA	TTGA TTT GTA	480
FWA 9-10L.ab1	A TTT GGT TGT	TTAA GGT TGT	TTTT AGT ATA	TAAT TTT AAT	ATT AT TTT TA	TG TTT TTT TTT	T - A TGAT TTA	TTGA TTT GTA	479
FWA 9-11L.ab1	A TTT GGT TGT	TTAA GGT TGT	TTTT AGT ATA	TAAT TTT AAT	ATT AT TTT TA	TG TTT TTT TTT	TTA TGAT TTA	TTGA TTT GTA	480
FWA 9-12L.ab1	A TTT GGT TGT	TTAA GGT TGT	TTTT AGT ATA	TAAT TTT AAT	ATT AT TTT TA	TG TTT TTT TTT	TTA TGAT TTA	TTGA TTT GTA	480
FWA 9-13L.ab1	A TTT GGT TGT	TTAA GGT TGT	TTTT AGT ATA	TAAT TTT AAT	ATT AT TTT TA	TG TTT TTT TTT	T - A TGAT TTA	TTGA TTT GTA	479
FWA 9-14L.ab1	A TTT GGT TGT	TTAA GGT TGT	TTTT AGT ATA	TAAT TTT AAT	ATT AT TTT TA	TG TTT TTT TTT	T - A TGAT TTA	TTGA TTT GTA	479

		500		520		540		560	
fwa repeats	GGAT AACTGAC	AAATCAGATTT	TTGTTGTTTT	TTTTCAGCCAA	AAATCAGATTT	TTTTTTACAC	TTTGTTTAGA	GAAAGATTTT	557
FWA 9-1L.ab1	GGAT AACTGAT	AAATCAGATTT	TTGTTGTTTT	TTTTCAGTTAA	AAATCAGATTT	TTTTTT - AAT	TTTGTTTAGA	GAAAGATTTT	559
FWA 9-2L.ab1	GGAT AACTGAT	AAATCAGATTT	TTGTTGTTTT	TTTTCAGTTAA	AAATCAGATTT	TTTTTT - AAT	TTTGTTTAGA	GAAAGATTTT	558
FWA 9-3L.ab1	GGAT AACTGAT	AAATCAGATTT	TTGTTGTTTT	TTTTCAGTTAA	AAATCAGATTT	TTTTTT - AAT	TTTGTTTAGA	GAAAGATTTT	558
FWA 9-4L.ab1	GGAT AACTGAT	AAATCAGATTT	TTGTTGTTTT	TTTTCAGTTAA	AAATCAGATTT	TTTTTT - AAT	TTTGTTTAGA	GAAAGATTTT	558
FWA 9-5L.ab1	GGAT AACTGAT	AAATCAGATTT	TTGTTGTTTT	TTTTCAGTTAA	AAATCAGATTT	TTTTTT - AAT	TTTGTTTAGA	GAAAGATTTT	558
FWA 9-6L.ab1	GGAT AACTGAT	AAATCAGATTT	TTGTTGTTTT	TTTTCAGTTAA	AAATCAGATTT	TTTTTT - AAT	TTTGTTTAGA	GAAAGATTTT	559
FWA 9-7L.ab1	GGAT AACTGAT	AAATCAGATTT	TTGTTGTTTT	TTTTCAGTTAA	AAATCAGATTT	TTTTTT - AAT	TTTGTTTAGA	GAAAGATTTT	559
FWA 9-8L.ab1	GGAT AACTGAT	AAATCAGATTT	TTGTTGTTTT	TTTTCAGTTAA	AAATCAGATTT	TTTTTT - AAT	TTTGTTTAGA	GAAAGATTTT	558
FWA 9-9L.ab1	GGAT AACTGAT	AAATCAGATTT	TTGTTGTTTT	TTTTCAGTTAA	AAATCAGATTT	TTTTTT - AAT	TTTGTTTAGA	GAAAGATTTT	559
FWA 9-10L.ab1	GGAT AACTGAT	AAATCAGATTT	TTGTTGTTTT	TTTTCAGTTAA	AAATCAGATTT	TTTTTT - AAT	TTTGTTTAGA	GAAAGATTTT	558
FWA 9-11L.ab1	GGAT AACTGAT	AAATCAGATTT	TTGTTGTTTT	TTTTCAGTTAA	AAATCAGATTT	TTTTTT - AAT	TTTGTTTAGA	GAAAGATTTT	558
FWA 9-12L.ab1	GGAT AACTGAT	AAATCAGATTT	TTGTTGTTTT	TTTTCAGTTAA	AAATCAGATTT	TTTTTT - AAT	TTTGTTTAGA	GAAAGATTTT	559
FWA 9-13L.ab1	GGAT AACTGAT	AAATCAGATTT	TTGTTGTTTT	TTTTCAGTTAA	AAATCAGATTT	TTTTTT - AAT	TTTGTTTAGA	GAAAGATTTT	559
FWA 9-14L.ab1	GGAT AACTGAT	AAATCAGATTT	TTGTTGTTTT	TTTTCAGTTAA	AAATCAGATTT	TTTTTT - AAT	TTTGTTTAGA	GAAAGATTTT	558

fwa repeats	GGTTCC - -	563
FWA 9-1L.ab1	GGTTAAGGG	568
FWA 9-2L.ab1	GGTTAAGGG	567
FWA 9-3L.ab1	GGTTAAGGG	567
FWA 9-4L.ab1	GGTTAAGGG	567
FWA 9-5L.ab1	GGTTAAGGG	567
FWA 9-6L.ab1	GGTTAAGGG	568
FWA 9-7L.ab1	GGTTAAGGG	568
FWA 9-8L.ab1	GGTTAAGGG	567
FWA 9-9L.ab1	GGTTAAGGG	568
FWA 9-10L.ab1	GGTTAAGGG	567
FWA 9-11L.ab1	GGTTAAGGG	567
FWA 9-12L.ab1	GGTTAAGGG	568
FWA 9-13L.ab1	GGTTAAGGG	568
FWA 9-14L.ab1	GGTTAAGGG	567



