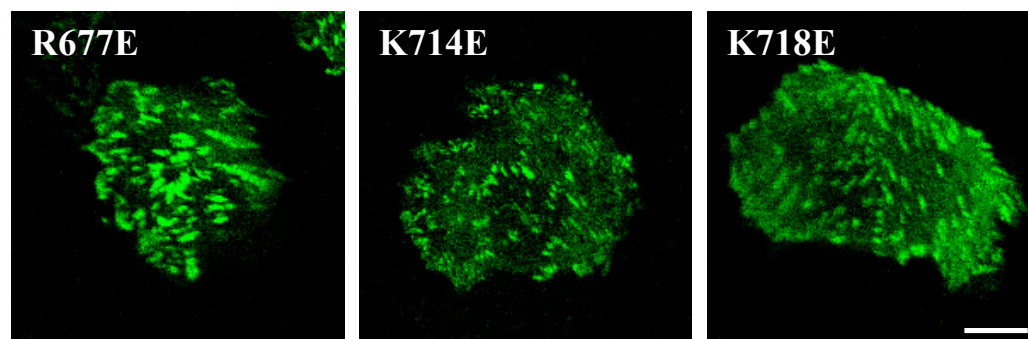
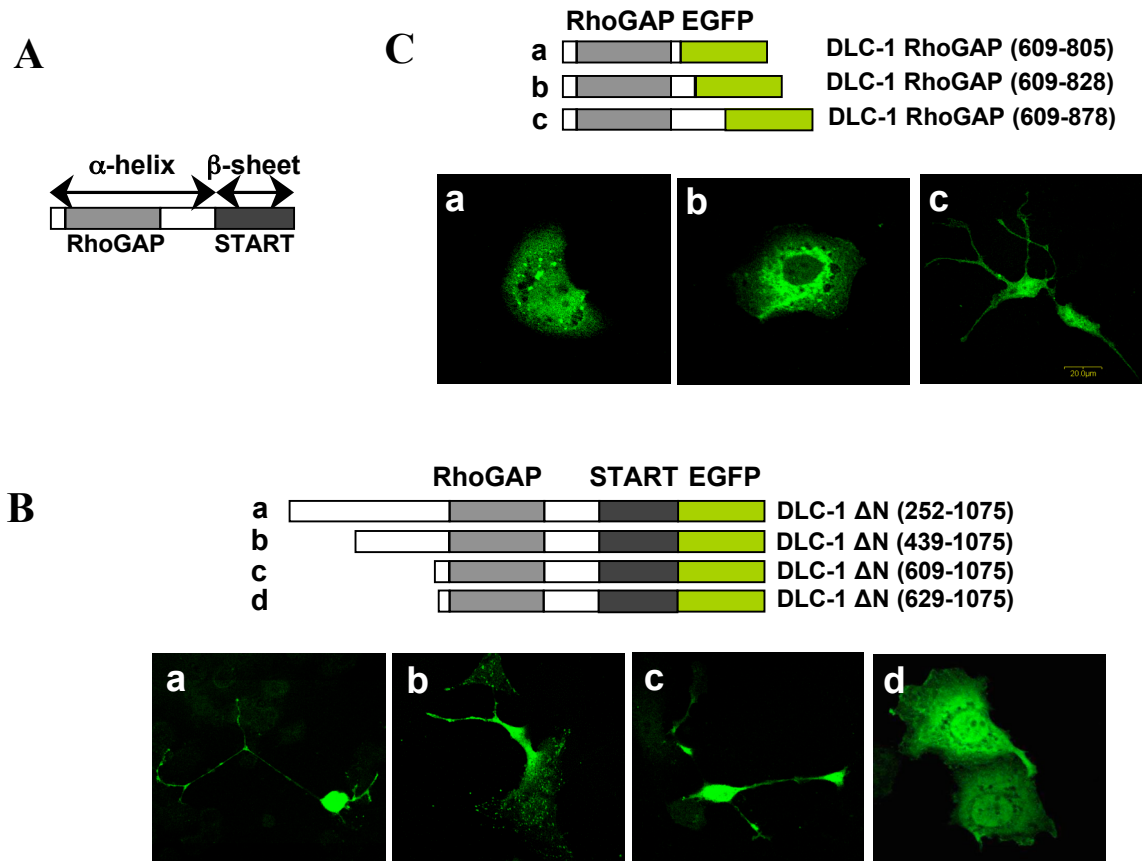


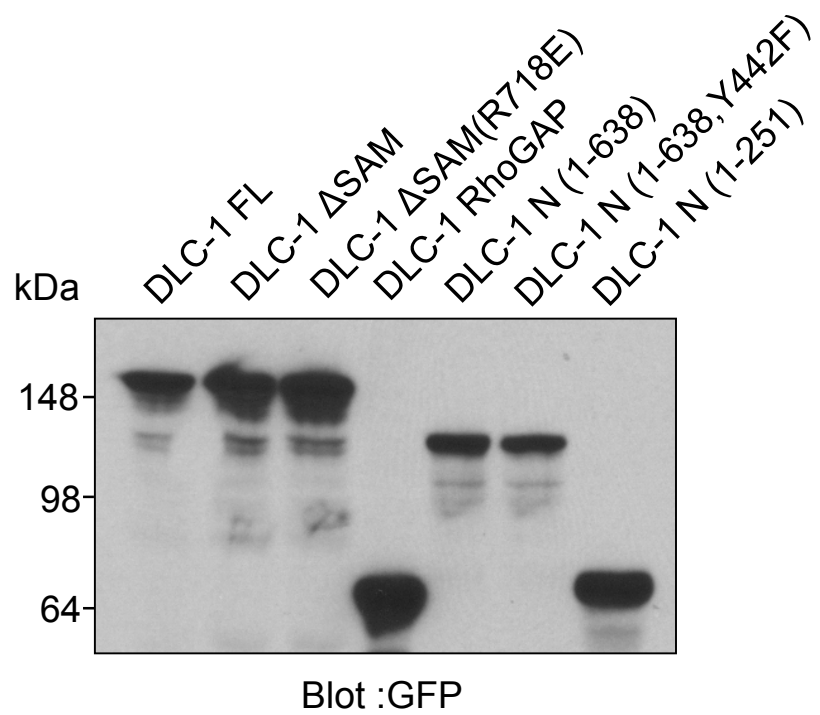
Supp. Fig 1.



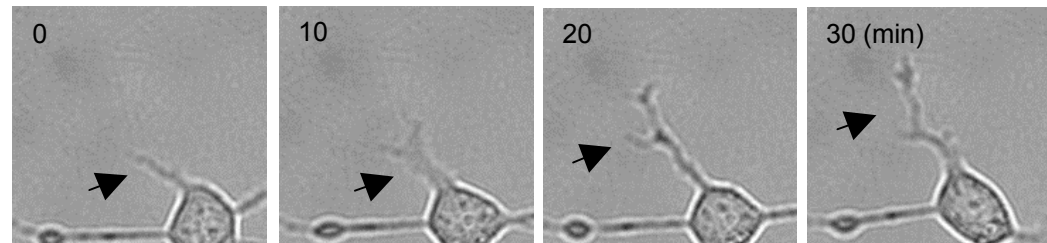
Supp. Fig. 2



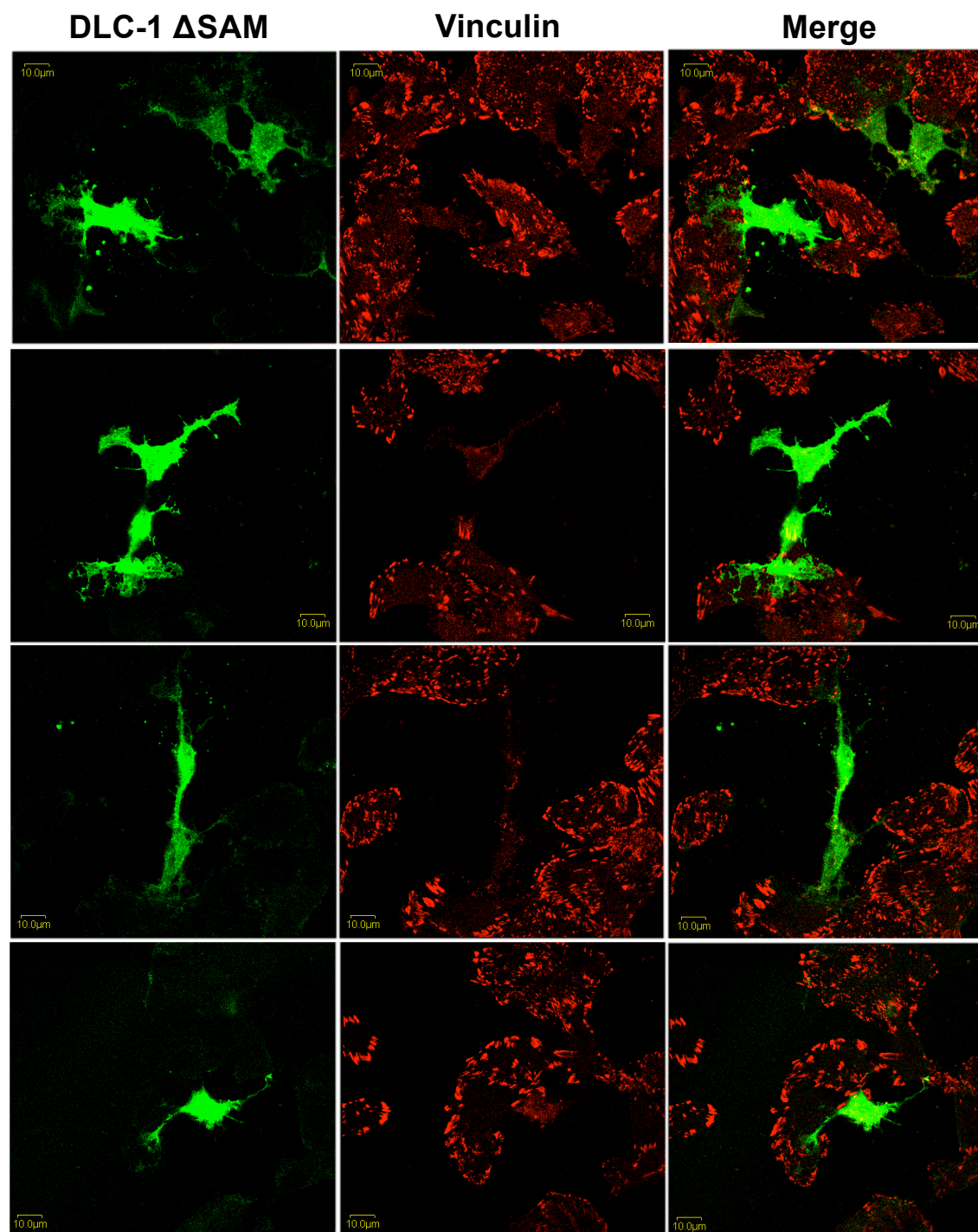
Supp. Fig. 3



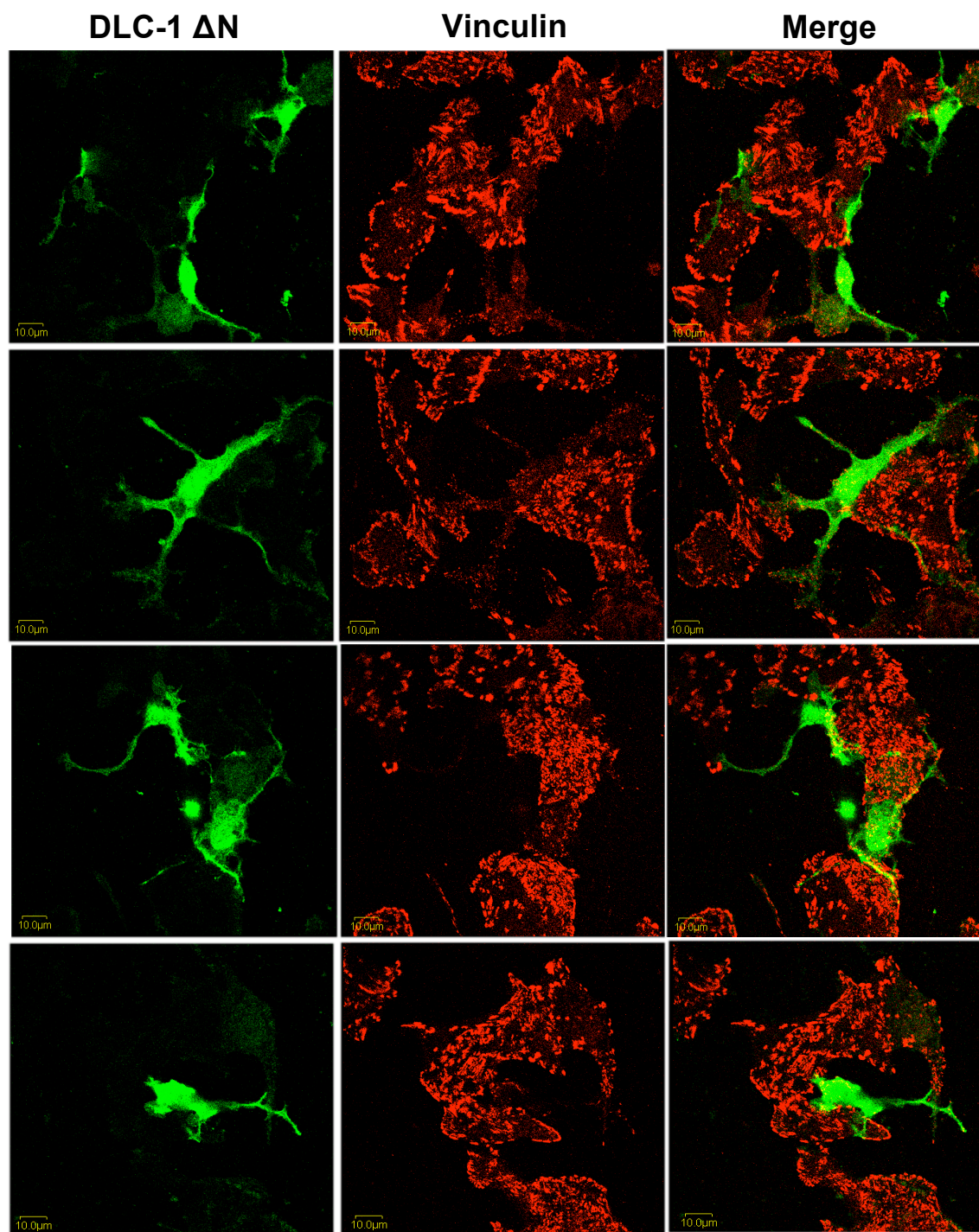
Supp. Fig. 4



Supp  
Fig 5

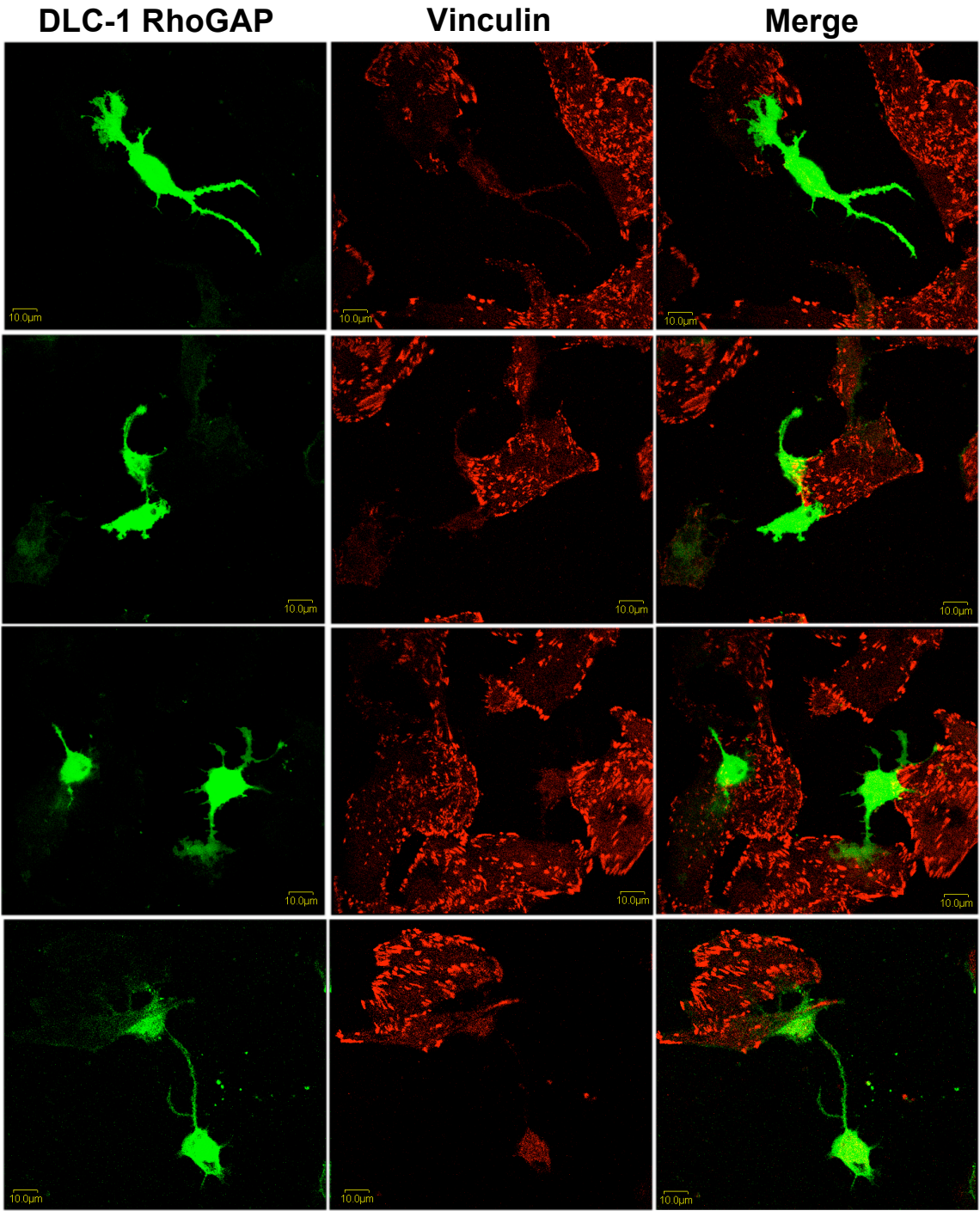


Supp  
Fig 6

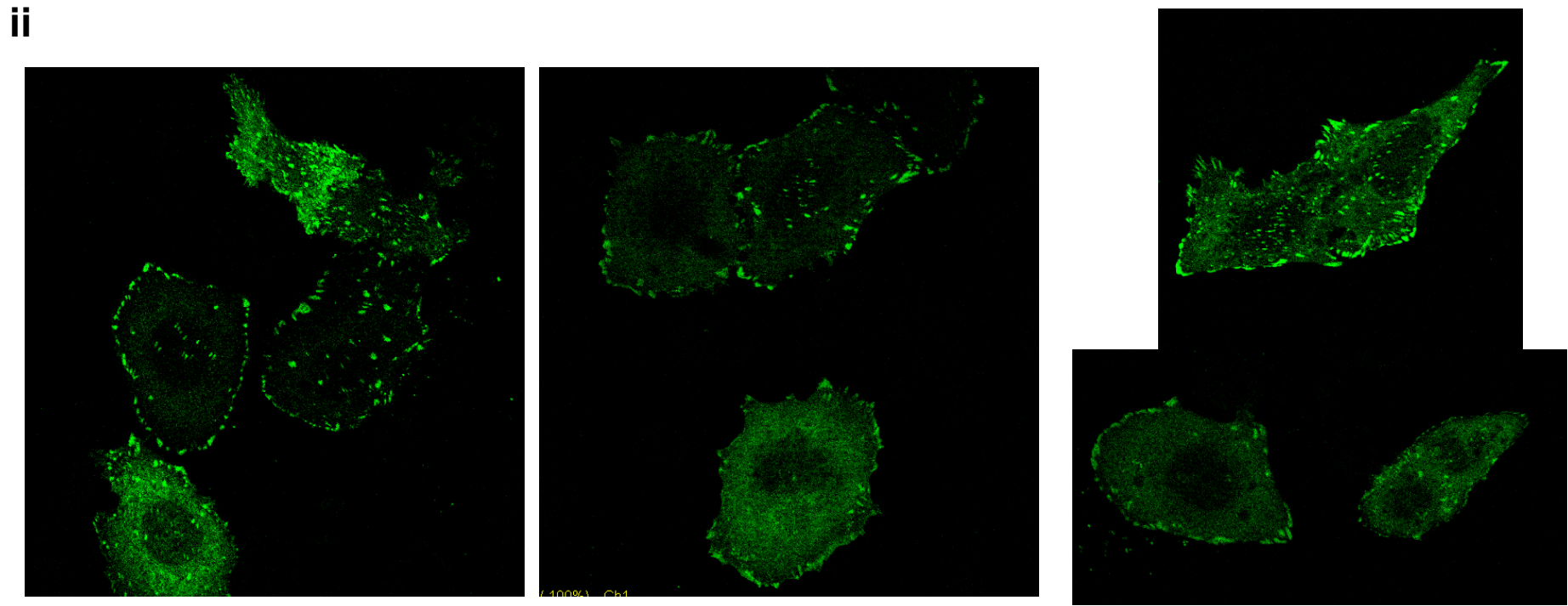
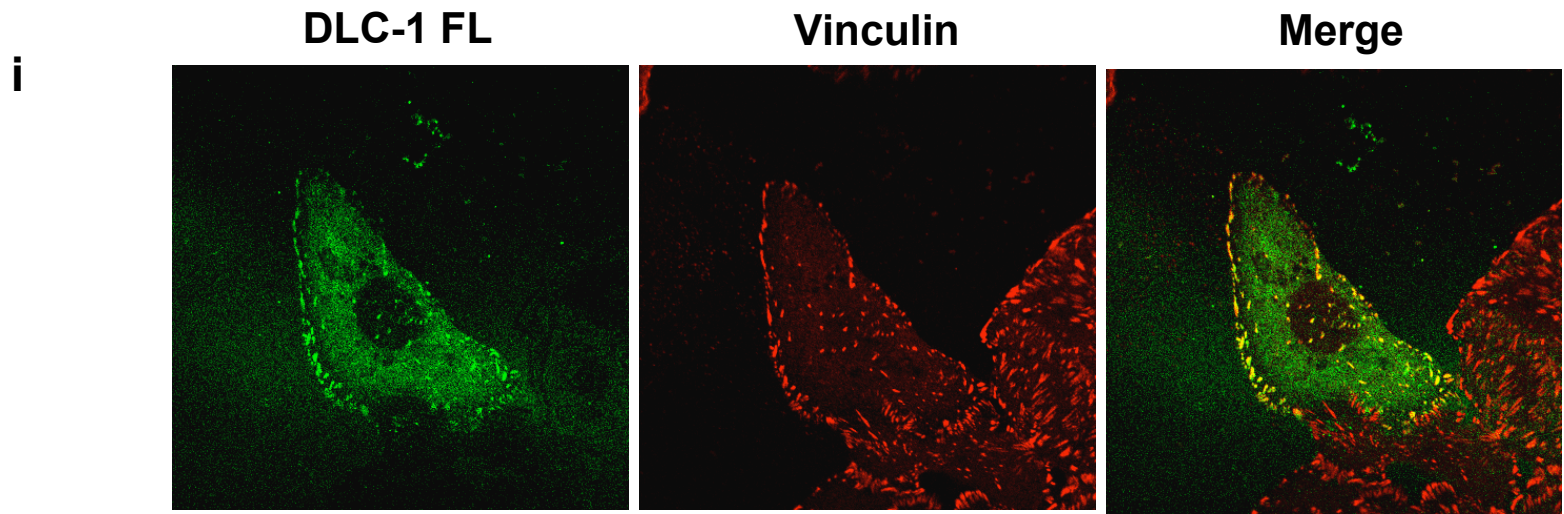




Supp  
Fig 7



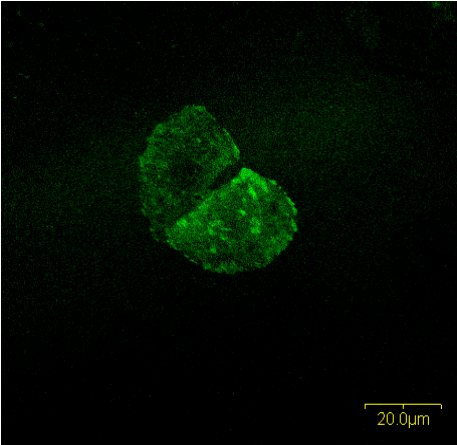
Supp Fig 8



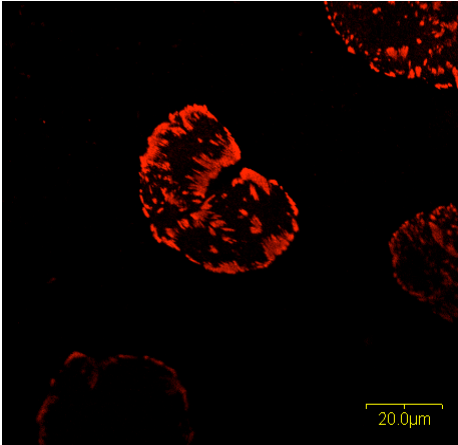


# Supp Fig 9

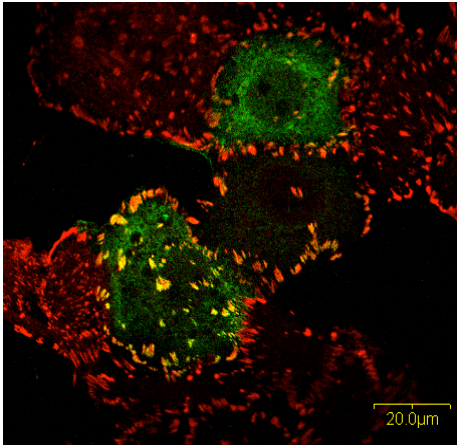
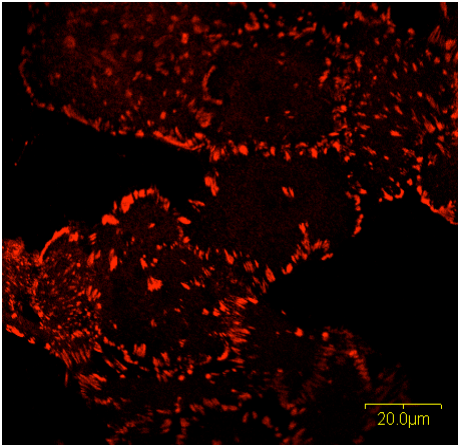
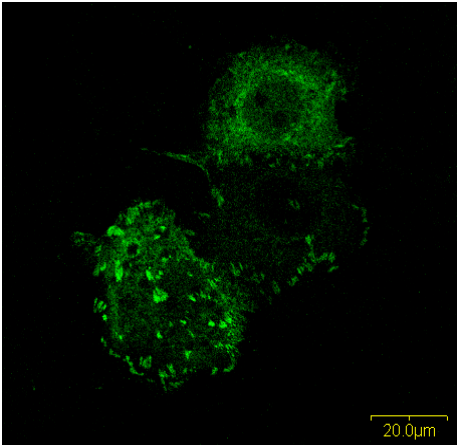
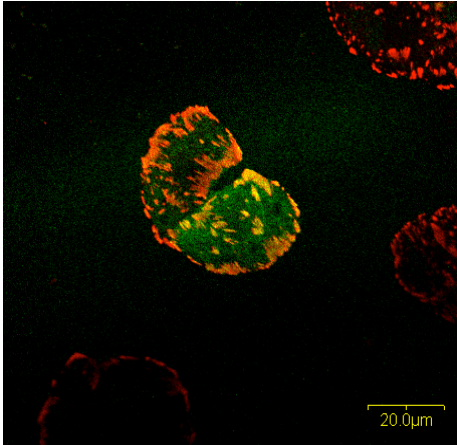
DLC-1 N



Vinculin

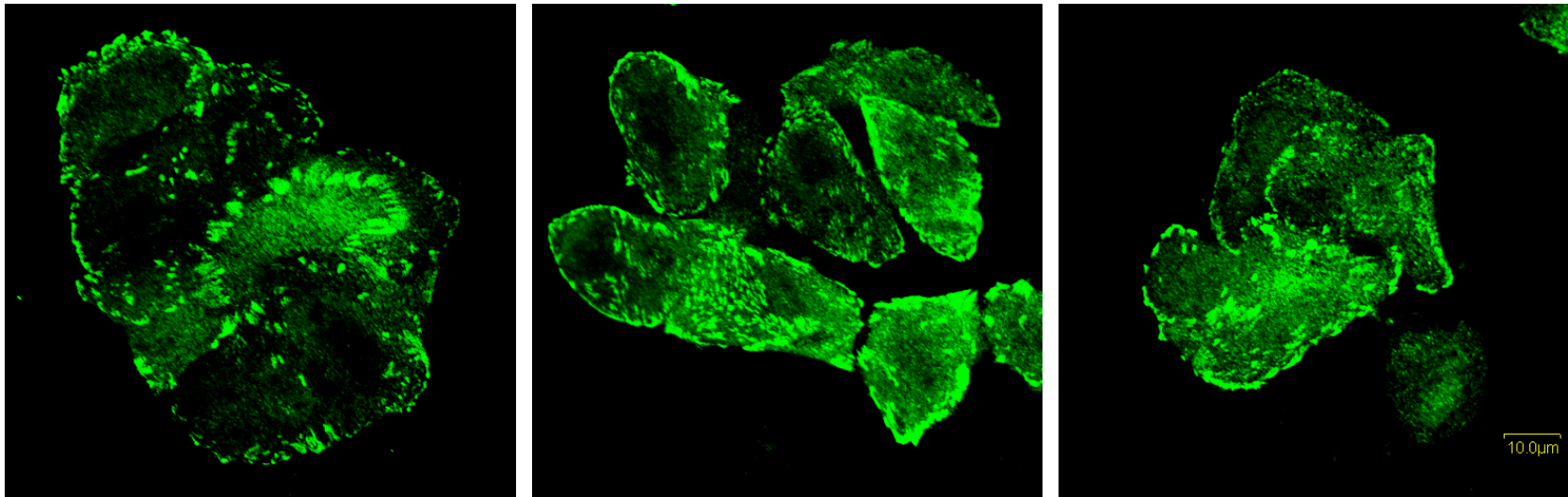


Merge



## Supp Fig 10

### MDA-MB-468 cells stably expressing DLC-1 FL



Retrovirus of the pBabe-puro vectors encoding DLC-1 FL was generated and used to infect the MDA-MB-468 cells. After selection in growth medium containing 1.0 mg/ml puromycin, multiple drug resistant colonies were pooled together to establish mass populations stably expressing each DLC-1 protein.

## Supplementary Table1

	Cytoplasm localization	Focal adhesion localization	Loss of FA
GFP	~100%	0%	0%
DLC-1 FL	50~90%	10~50%	~10%
DLC-1 $\Delta$ SAM	~95%	~5%	~95%
DLC-1 $\Delta$ N	~100%	0%	~95%
DLC-1 START	~100%	0%	0%
DLC-1 N1	50~90%	10~50%	0%
DLC-1 SAM	~100%	0%	0%
DLC-1 RhoGAP	~100%	0%	~95%

The Table summarizes observations on 20-50 transfected cells for each construct. Loss of Focal Adhesions was judged by vinculin staining.