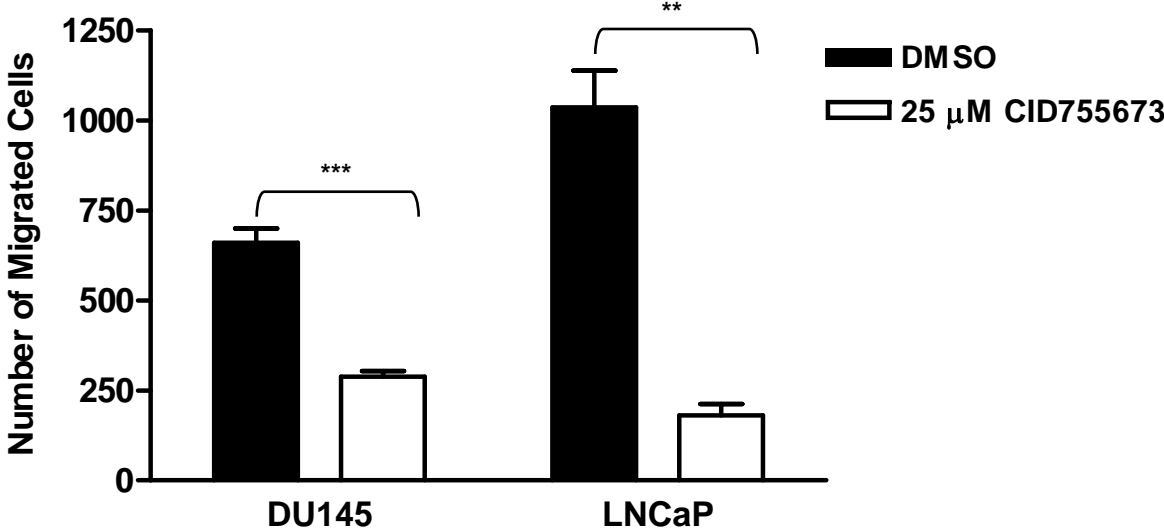


SUPPLEMENTAL FIGURE LEGENDS

Figure 1S. The effects of CID755673 on tumor cell migration. DU145 cells were seeded into the 24-well transwell inserts that contain filters with 8 micron pores. After 22 h incubation, cells that did not migrate through the pores were removed and the traversed cells were fixed, stained, and photographed under a microscope. Magnification, 200x. Number of migrated cells represents the total number of traversed cells in 10 random fields. The experiment was repeated twice and a representative one is shown. ***P<0.001.

Figure 2S. CID755673 inhibited prostate cancer cell proliferation. LNCaP cells were seeded in triplicate into 96-well plates and treated with varying concentrations of CID755673. Media containing fresh inhibitors were replenished every 24 h. The number of viable cells was measured after 72 h using the CellTiter-Glo Luminescent Cell Viability Assay. One of two independent experiments is shown. ***P<0.001.

Supplemental Figure 1S



Supplemental Figure 2S

