

Redox-Triggered Contents Release from Liposomes

Winston Ong, Yuming Yang, Angela C. Cruciano and Robin L. McCarley*

Supporting Information

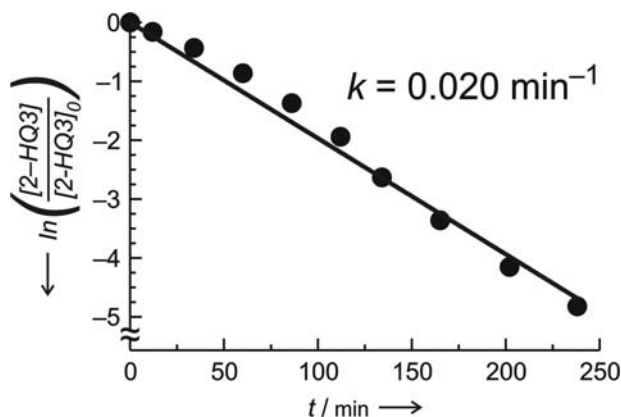


Figure S1. Time-dependent release of **3-HQ** from **2-HQ3** in 0.1 M phosphate buffer (pD = 7). Line shows the best fit to the experimental data. Experimental details have been previously reported⁵².

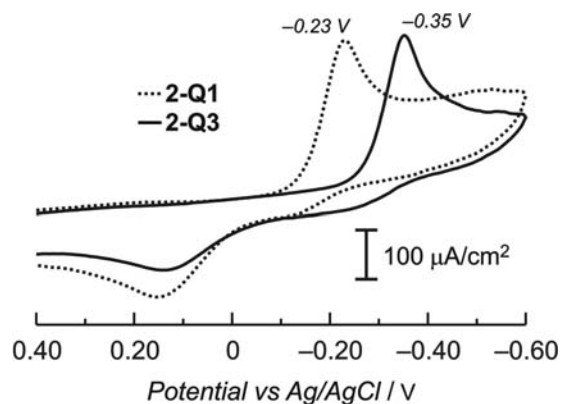
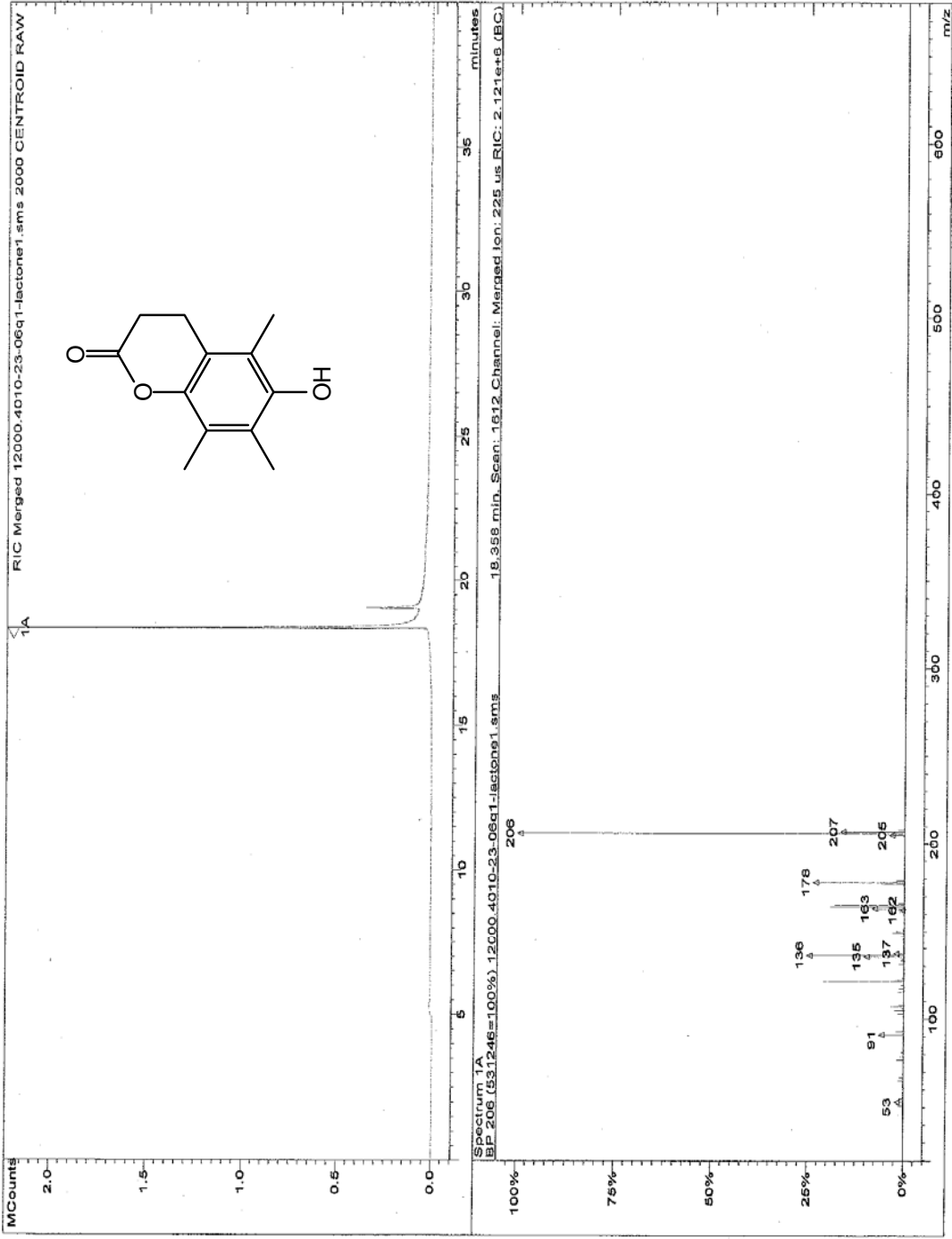


Figure S2. Cyclic voltammograms of **2-Q1** ($1.0 \times 10^{-3} \text{ M}$) and **2-Q3** ($1.0 \times 10^{-3} \text{ M}$) in 0.1 M phosphate buffer, pH 7.1 at ambient temperature using a glassy carbon electrode (diameter = 3 mm). Scan rate = 0.1 V s^{-1} . The cathodic peak potentials for the two-electron reduction of each lipid are shown.

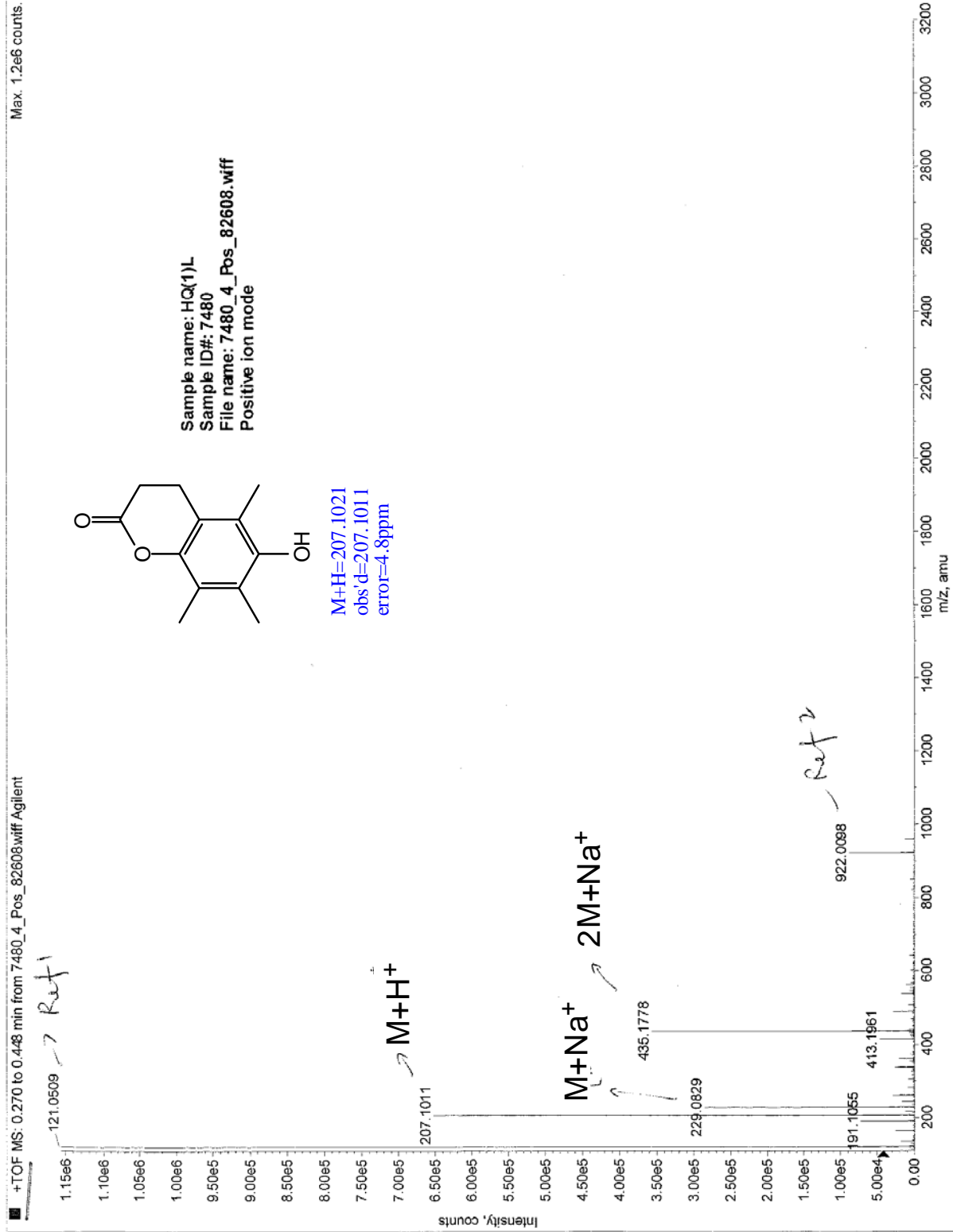
GC-MS Data for 3-HQ1

Print Date: 24 Oct 2006 22:38

MS Data Review All Plots - 10/24/06 11:22



HR-ESI-ToF-MS Data for 3-HQ1



¹H NMR Spectral Data for 3-HQ1

Current Data Parameters
 NAME Q1C-lactone
 EXPNO 1
 PROCNO 1

F2 - Acquisition Parameters

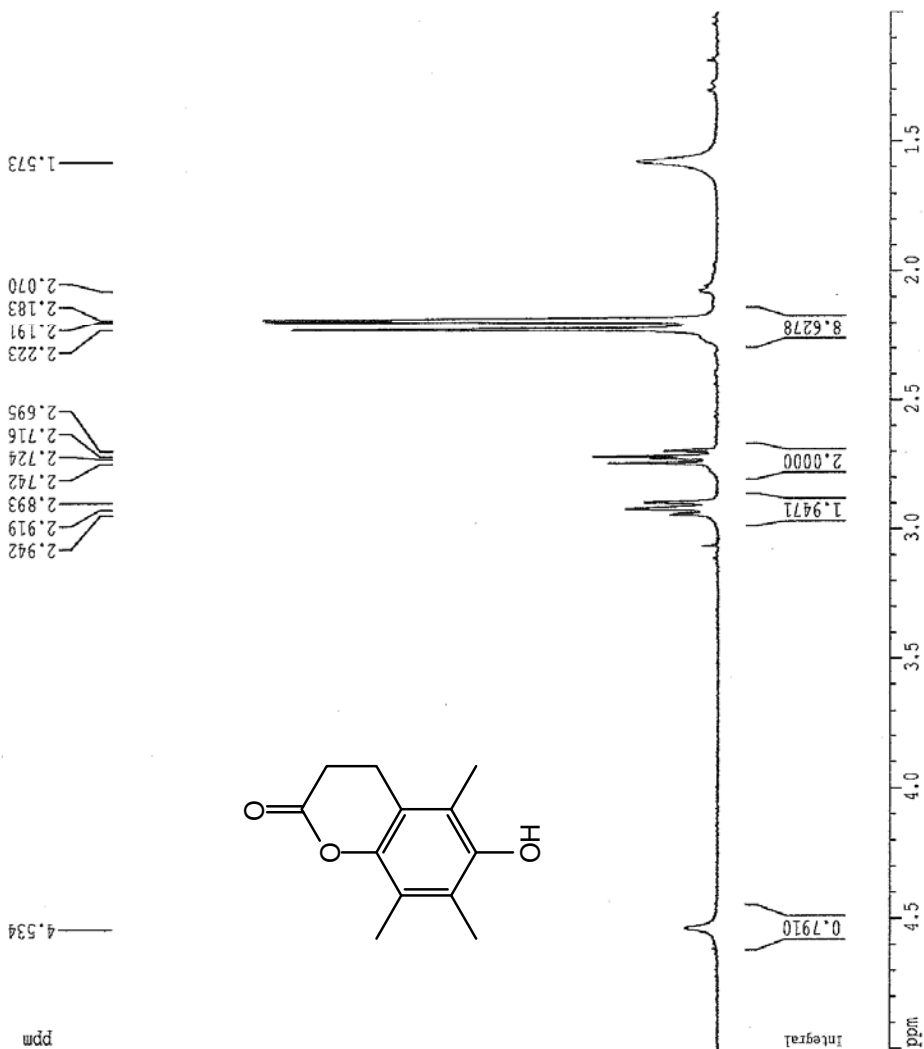
Date_ 20061019
 Time 17.30
 INSTRUM spect
 PROBED 5 mm Multi
 PULPROG zg30
 TD 27026
 SOLVENT CDCl3
 NS 16
 DS 2
 SWH 4504.504 Hz
 FIDRES 0.166673 Hz
 AQ 2.9999361 sec
 RG 4096
 DW 111.600 usec
 DE 158.57 usec
 TE 305.0 K
 D1 2.0000000 sec
 E1 6.95 usec
 SFO1 500.1312003 MHz
 NUCLEUS 1H

F2 - Processing parameters

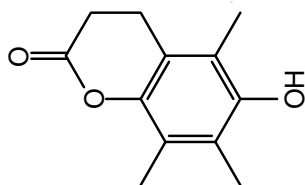
SI 65536
 SF 300.1300040 MHz
 EM
 NDW 0
 SSB 0
 LB 0.20 Hz
 GB 0
 PC 1.00

ID NMR plot parameters

CX 18.00 cm
 F1P 5.000 ppm
 F1 1500.65 Hz
 F2P 1.000 ppm
 F2 300.13 Hz
 FREQM 0.22222 ppm/cm
 HZCM 66.65356 Hz/cm



¹³C NMR Spectral Data for 3-HQ1

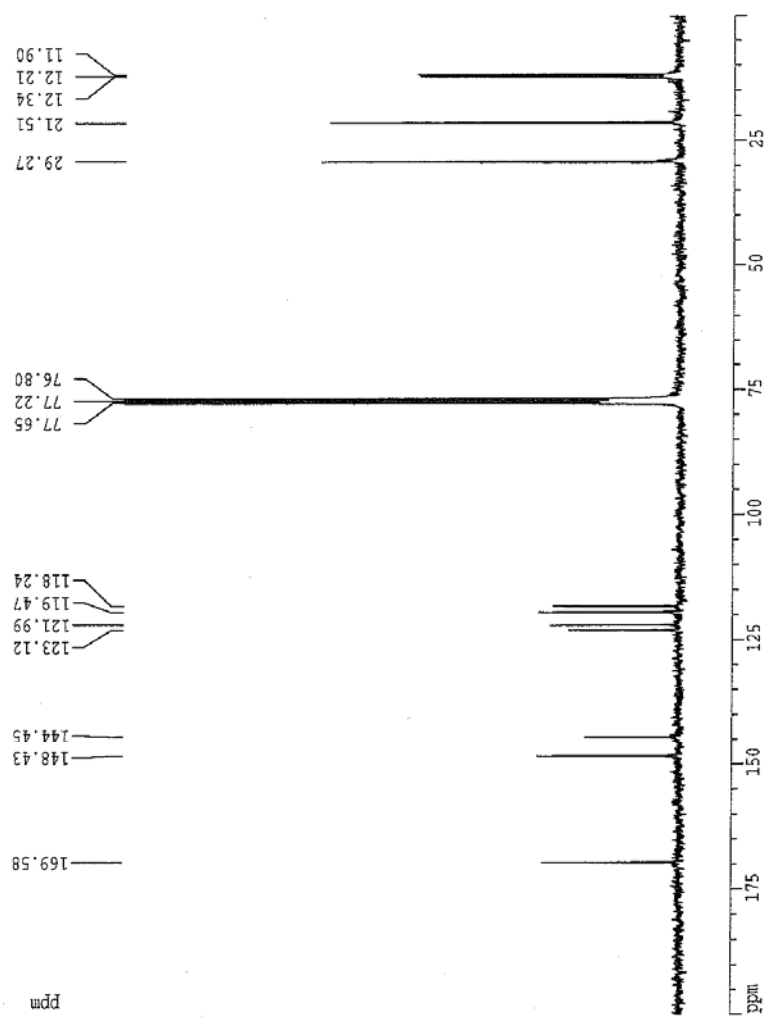


Current Data Parameters
 NAME Q1C-lactone
 EXNO 2
 PROCNO 1

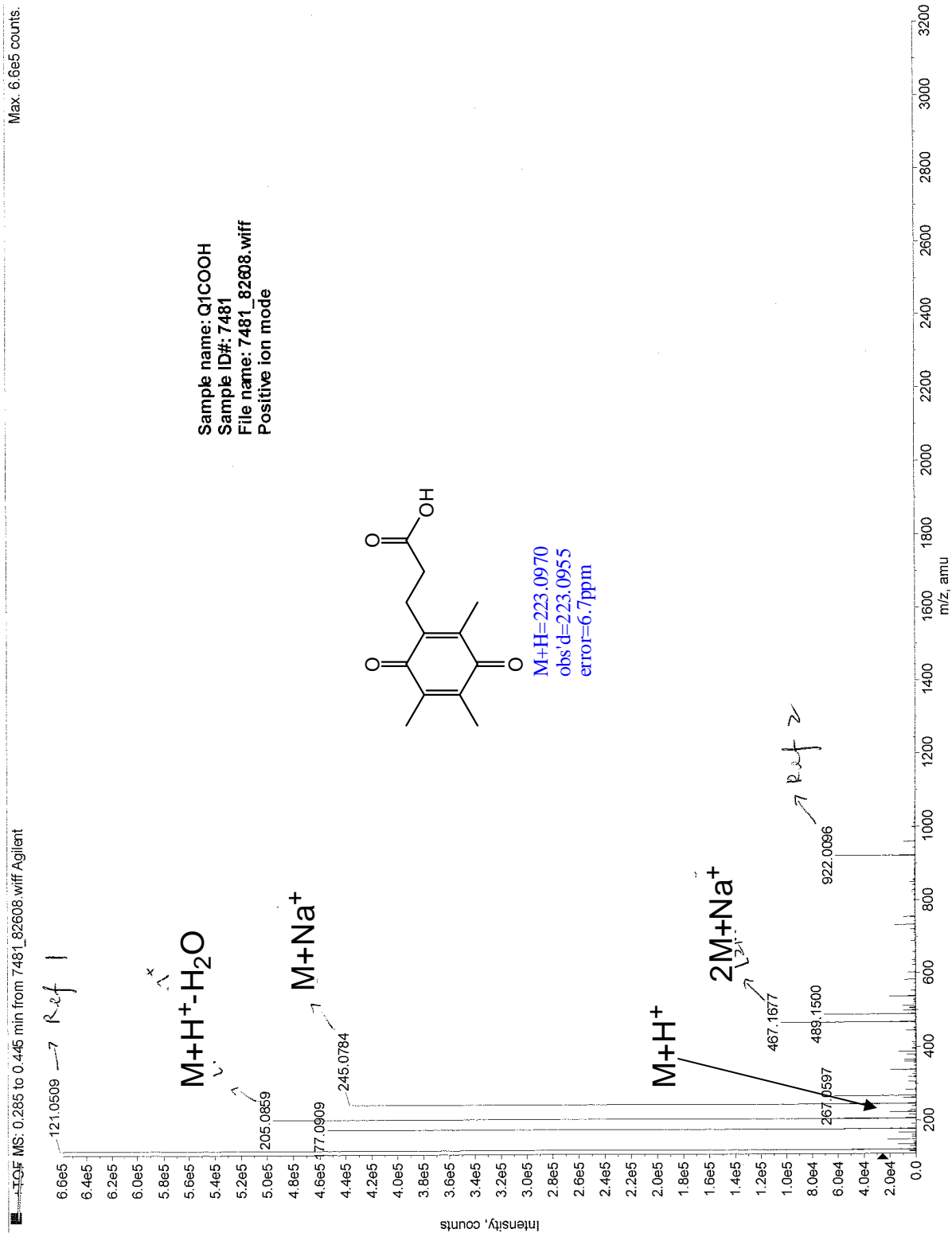
F2 - Acquisition Parameters
 Date 20061218
 Time 18.21
 INSTRUM spect
 PROCNO 5 mm Multi
 PULPROG zgpg30
 TD 16384
 SOLVENT CDCl3
 NS 14000
 DS 2
 SWH 22727.273 Hz
 FIDRES 1.387163 Hz
 AQ 0.3604980 sec
 RG 32768
 DW 22.000 usec
 DE 31.43 usec
 TE 300.0 K
 D12 6.00002000 sec
 D16 23.00 dB
 D1 2.00000000 sec
 CPLEPRG waltz16
 P31 86.00 usec
 D11 0.03000000 sec
 D15 23.00 dB
 P1 5.80 usec
 SFO1 75.4751777 MHz
 NUC13C

F2 - Processing parameters
 SI 16384
 SF 75.4677347 MHz
 WDW EM
 SSB 0
 LB 3.00 Hz
 GB 0
 PC 1.40

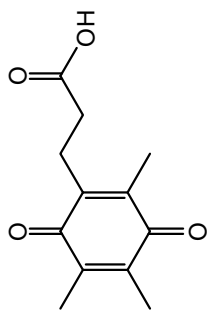
1D NMR plot parameters
 CX 18.00 cm
 F1F 200.000 ppm
 F1 15093.55 Hz
 F2F 0.000 ppm
 F2 0.00 Hz
 FPCN 11.1111 ppm/cm
 HZCN 838.53933 Hz/cm



HR-ESI-ToF-MS Data for 4-Q1



¹H NMR Spectral Data for 4-Q1

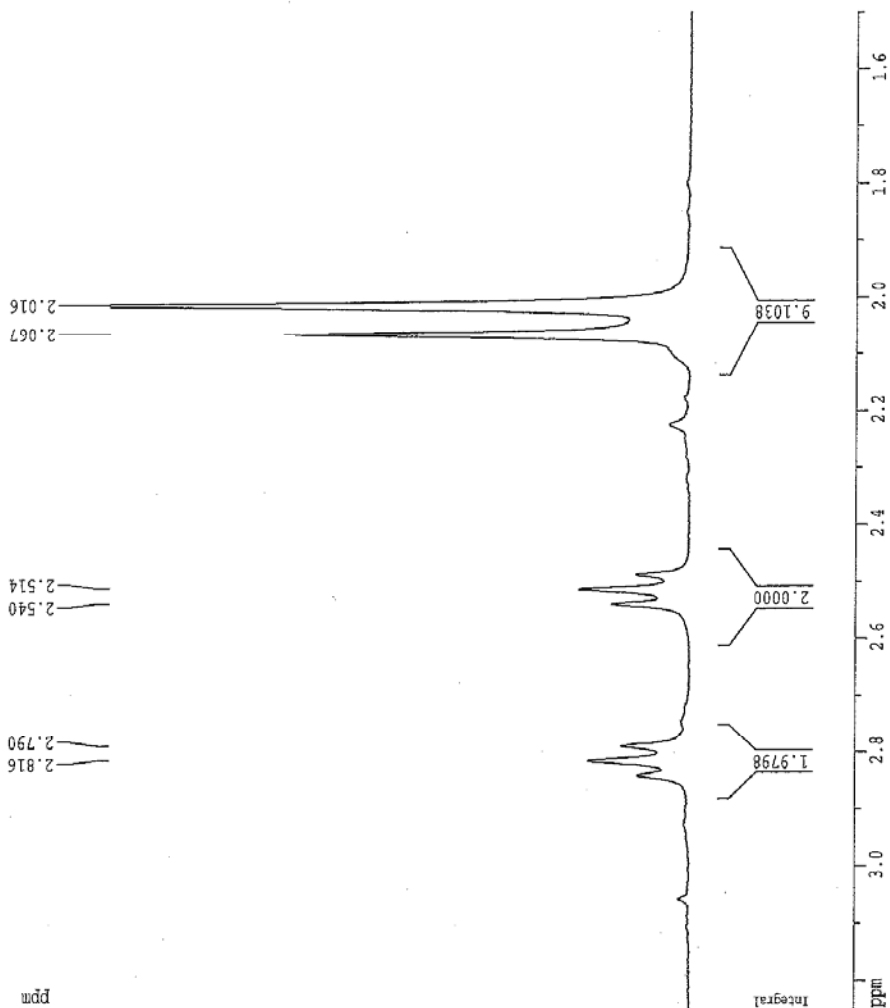


Current Data Parameters
 NAME Q1C-COOH
 EXNO 1
 PROCNO 1

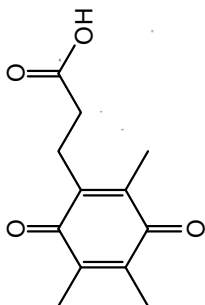
F2 - Acquisition Parameters
 Date 20070313
 Time 13.23
 INSTRUM spect
 PROBD 5 mm Nulti
 PULPROG zg30
 TD 27026
 SOLVENT CDCl3
 NS 16
 DS 2
 SWH 4504.504 Hz
 FIDRES 0.166673 Hz
 AQ 2.9999361 sec
 RG 2048
 DW 111.000 usec
 DE 158.57 usec
 TE 305.0 K
 D1 2.0000000 sec
 P1 6.95 usec
 SFO1 300.1312005 MHz
 NUCLEUS 1H

F2 - Processing parameters
 SI 65536
 SF 300.1300048 MHz
 EQN EM
 SSB 0
 LB 0.20 Hz
 GB 0
 PC 1.00

1D NMR plot parameters
 CX 18.00 cm
 P1P 3.250 ppm
 F1 975.42 Hz
 F2P 1.500 ppm
 F2 459.20 Hz
 PPM2CM 0.09722 ppm/cm
 HZCM 29.17831 Hz/cm



¹³C NMR Spectral Data for 4-Q1

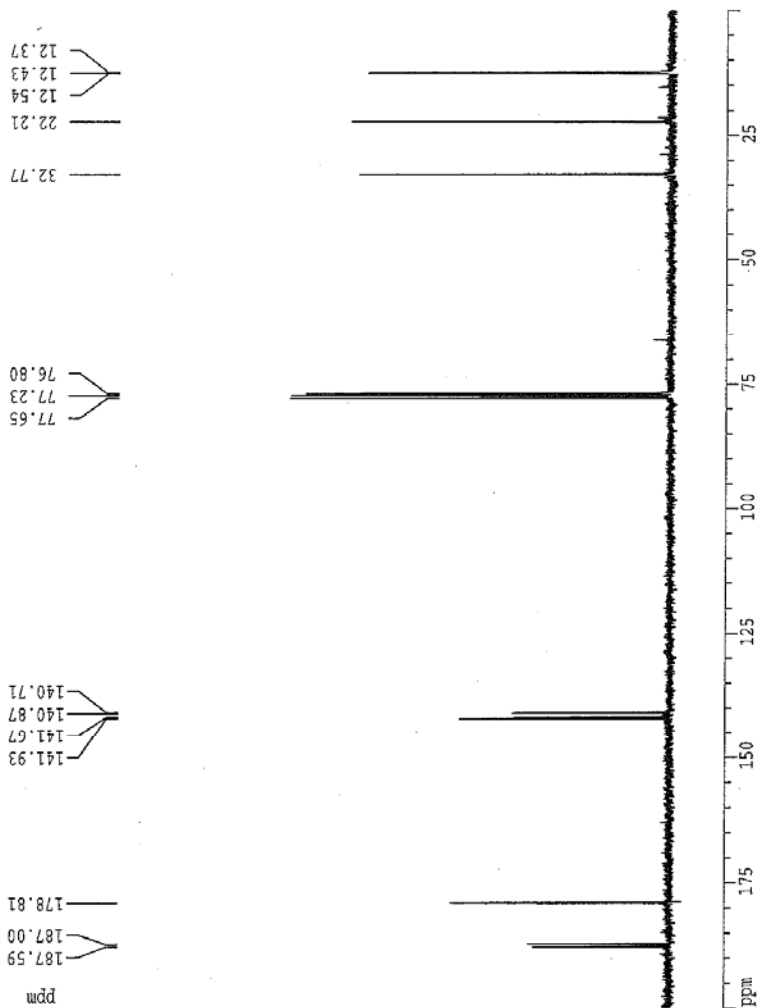


Current Data Parameters
 NAME Q1C-COOH
 EXNO 2
 PROCNO 1

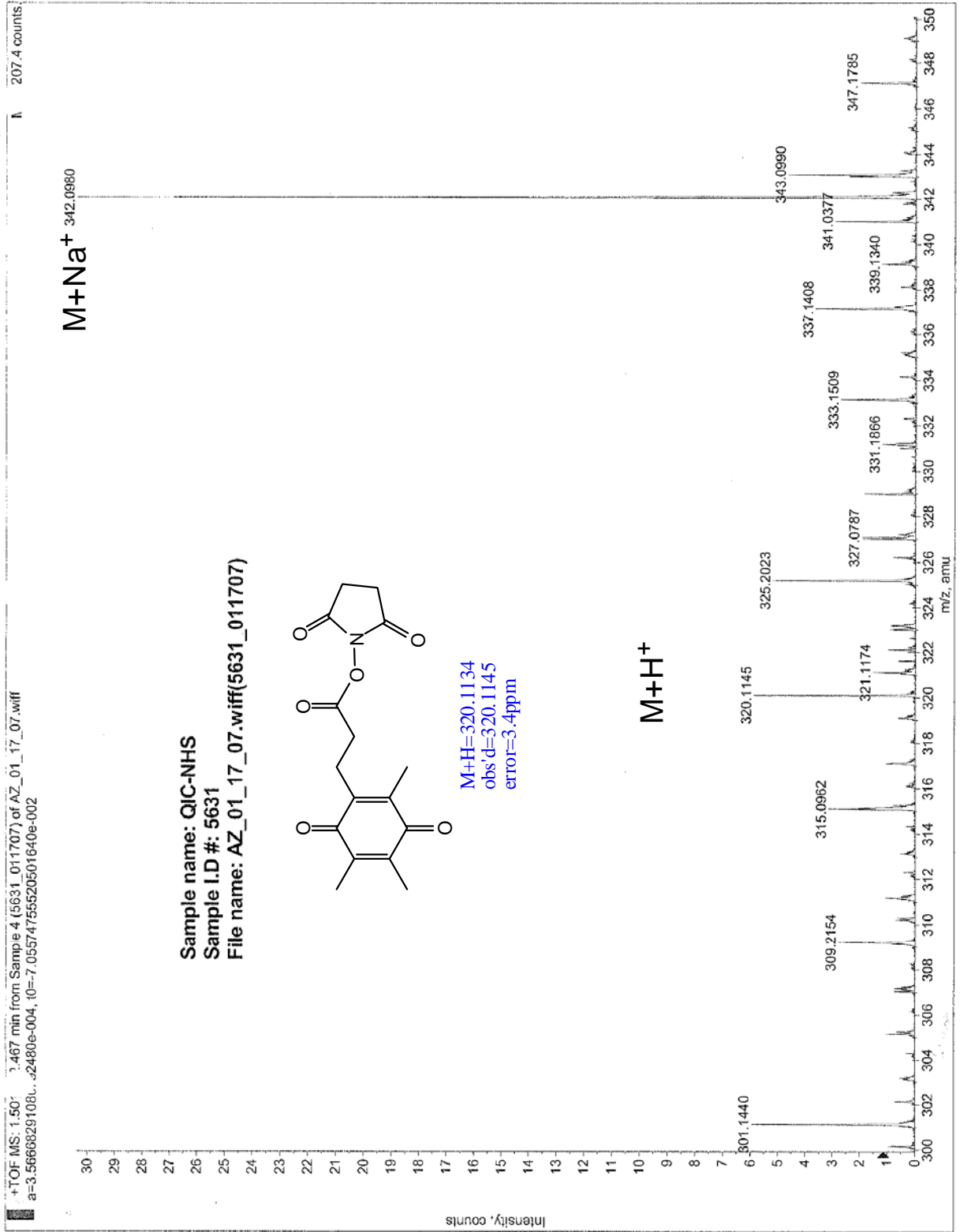
F2 - Acquisition Parameters
 Date 20070313
 Time 14.18
 INSTRUM spect
 PROBRD 5 mm Multi
 PULPROG zgpg30
 TD 16384
 FIDRES 0.35604990 sec
 AQ 32768
 RG 22.000 usec
 DE 31.43 usec
 TE 300.0 K
 D12 0.0002000 sec
 DL6 23.00 dB
 D1 2.0000000 sec
 CPDPRG waltz16
 P31 86.00 usec
 D11 0.03000000 sec
 DL5 23.00 dB
 P1 9.80 usec
 SF01 75.475177 MHz
 NUCLEUS ¹³C

F2 - Processing parameters
 SI 16384
 SF 75.4677375 MHz
 MVM EX
 SSB 0
 LB 1.00 Hz
 GB 0
 PC 1.40

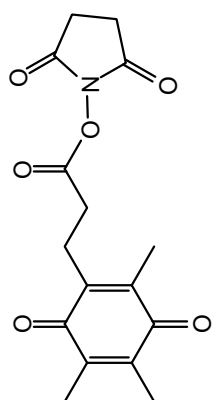
1D NMR Plot parameters
 CX 18.00 cm
 F1P 200.000 ppm
 F1 15093.55 Hz
 F2P 0.000 ppm
 F2 0.00 Hz
 PPMCM 11.1111 ppm/cm
 HZCM 838.53033 Hz/cm



HR-ESI-ToF-MS Data for 5-Q1



¹H NMR Spectral Data for 5-Q1

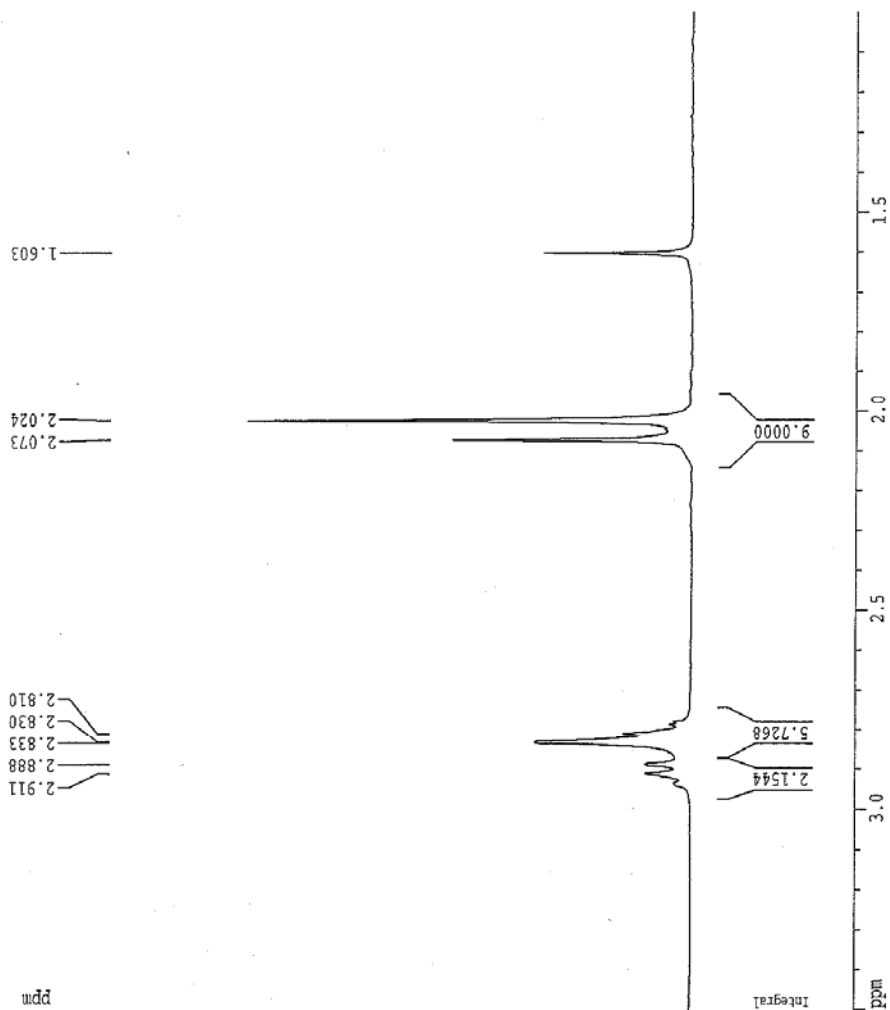


Current Data Parameters
 NAME Q1C-NHS
 EXPNO 1
 PROCNO 1

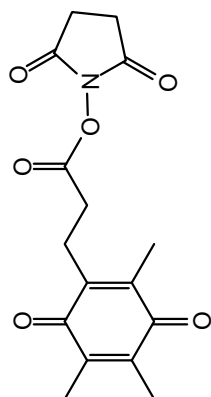
F2 - Acquisition Parameters
 Date 2607011
 Time 13.38
 INSTRUM spect
 PROBRD 5 mm Mult1
 PULPROG zgpg30
 TD 27026
 SOLVENT CDCl3
 NS 16
 DS 2
 SMH 4504.504 Hz
 FIDRES 0.166673 Hz
 AQ 2.9989361 sec
 RG 2048
 DN 111.000 usec
 DE 158.57 usec
 TE 305.0 K
 D1 2.0000000 sec
 P1 6.95 usec
 SFO1 300.1312005 MHz
 NUCLEUS 1H

F2 - Processing parameters
 SI 65536
 SF 300.1300041 MHz
 MDW 0
 SSB 0
 LB 0.20 Hz
 GB 0
 PC 1.00

1D NMR plot parameters
 CX 18.00 cm.
 P1P 3.500 ppm
 F1 1050.46 Hz
 F2P 1.000 ppm
 F2 300.13 Hz
 PPMCM 0.13869 ppm/cm
 HZCM 41.66472 Hz/cm



¹³C NMR Spectral Data for 5-Q1

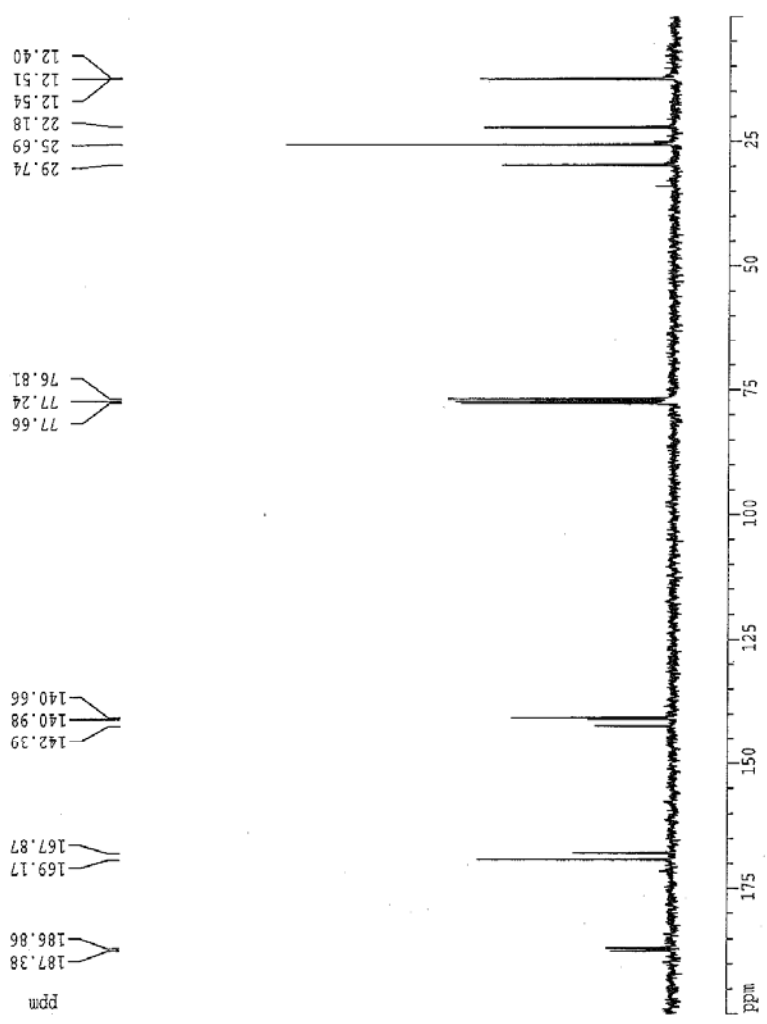


Current Data Parameters
 NAME Q1C-NHS
 EXNO 2
 PROCNO 1

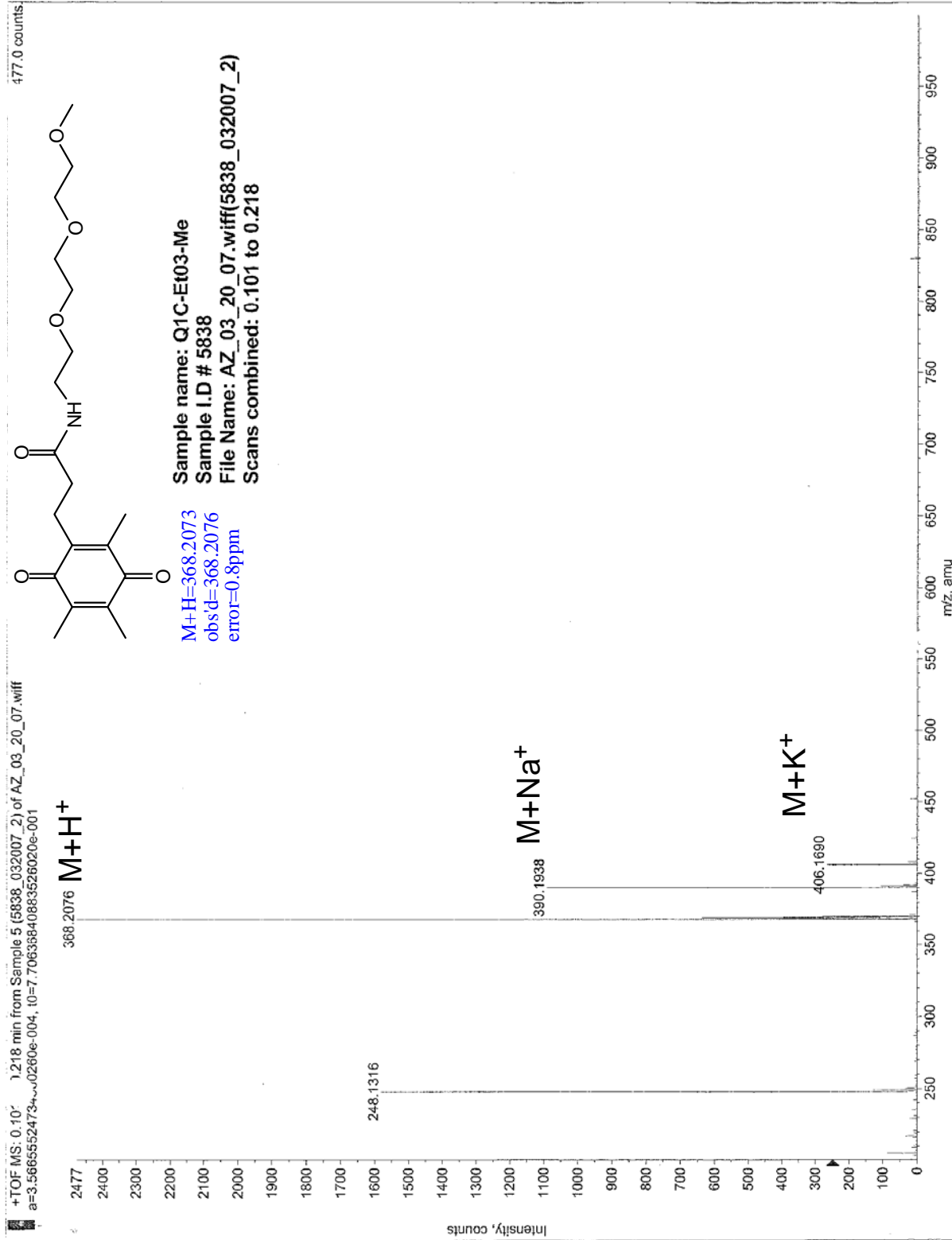
F2 - Acquisition Parameters
 Date 20070313
 Time 15.10
 INSTRUM spect
 PROBRD 5 mm Multi
 PULPROG zgpg30
 TD 65536
 ID 16384
 SOLVENT CDCl3
 NS 424
 DS 2
 SWH 22727.273 Hz
 FIDRES 1.387163 Hz
 AQ 0.3664980 sec
 RG 32768
 DW 22.000 usec
 DE 31.43 usec
 TE 300.0 K
 D12 0.0002000 sec
 DLS 23.00 dB
 DI 2.0000000 sec
 CPDPRG waltz16
 P11 86.00 usec
 D11 0.0300000 sec
 DMS 23.00 dB
 P1 9.80 usec
 SFC1 75.4751273 MHz
 NUCLEUS ¹³C

F2 - Processing parameters
 SI 16384
 SF 75.4577389 MHz
 WDM EM
 SSB 0
 LB 3.00 Hz
 GB 0
 PC 1.40

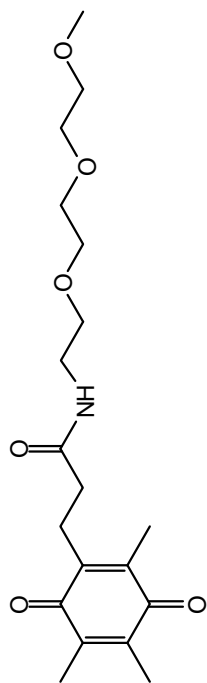
ID NMR Plot Parameters
 CK 18.00 cm
 FIP 200.000 ppm
 F1 15093.55 Hz
 F2P 0.000 ppm
 F2 0.00 Hz
 PPMCM 11.1111 ppm/cm
 HZCM 838.53033 Hz/cm



HR-ESI-ToF-MS Data for 2-Q1



¹H NMR Spectral Data for 2-Q1



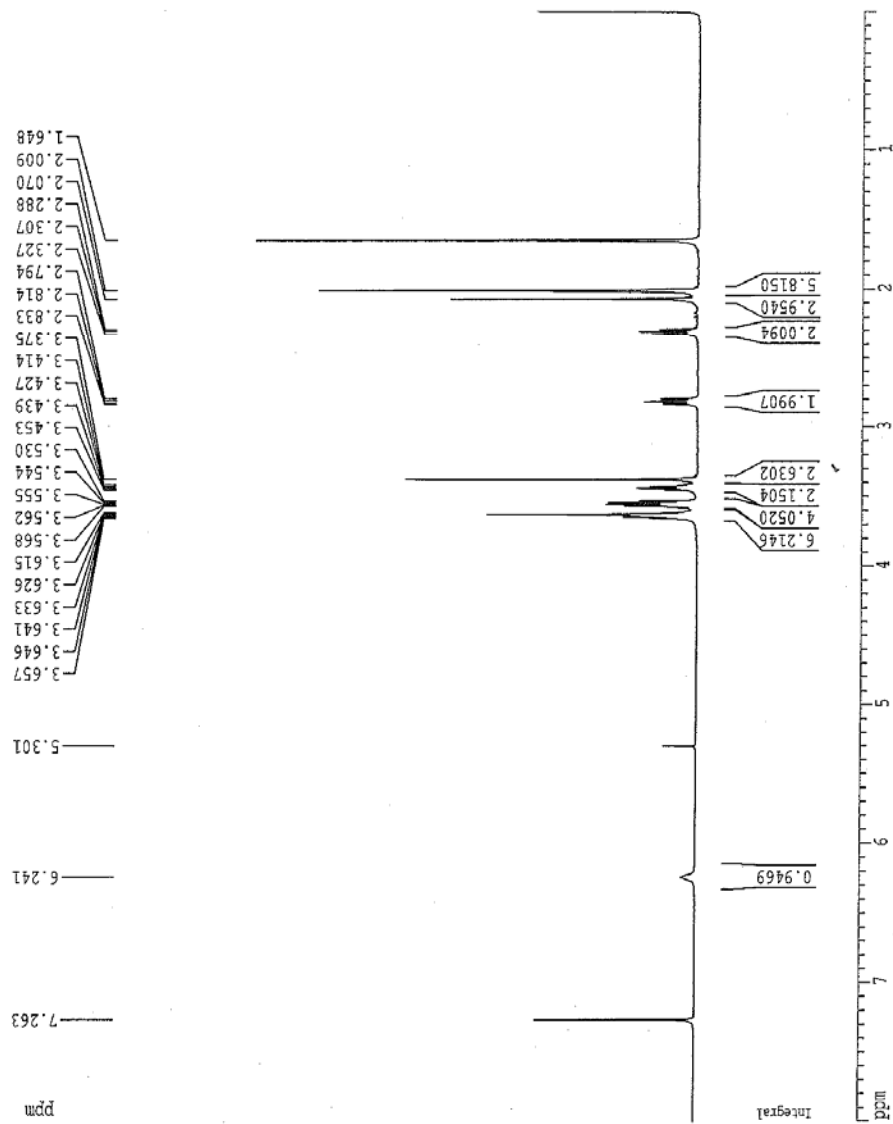
Current Data Parameters
 NAME Q1C-2503-Me
 EXNO 1
 PROCN 1

F2 - Acquisition Parameters
 Date 20061107
 Time 18.32
 INSTRUM spect
 PROBEID 5 mm Multinu
 PULPROG zg
 TD 35970
 SOLVENT CDCl3
 NS 16
 DS 2
 SMH 5995.204 Hz
 FIDRES 0.166672 Hz
 AQ 2.9999490 sec
 RG 256
 DM 83.500 usec
 DE 8.00 usec
 TE 298.0 K
 D1 2.00000000 Sec

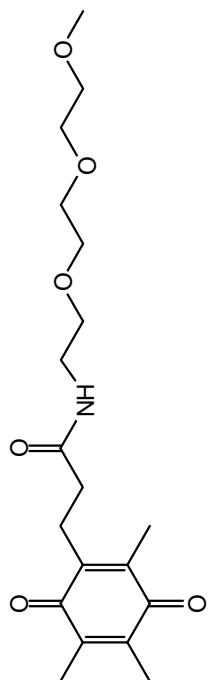
***** CHANNEL f1 *****
 NUC1 1H
 P1 8.00 usec
 PL1 1.00 dB
 SFO1 400.1324508 MHz

F2 - Processing parameters
 SI 65536
 SF 400.1300080 MHz
 MDW EM
 SSB 0
 LB 0.30 Hz
 GB 0
 PC 1.00

1D NMR plot parameters
 CX 20.00 cm
 FIP 8.000 ppm
 F1 3201.04 Hz
 FZP 0.000 ppm
 F2 0.00 Hz
 PPKM 0.40000 ppm/cm
 HZCN 160.05200 Hz/cm



¹³C NMR Spectral Data for 2-Q1

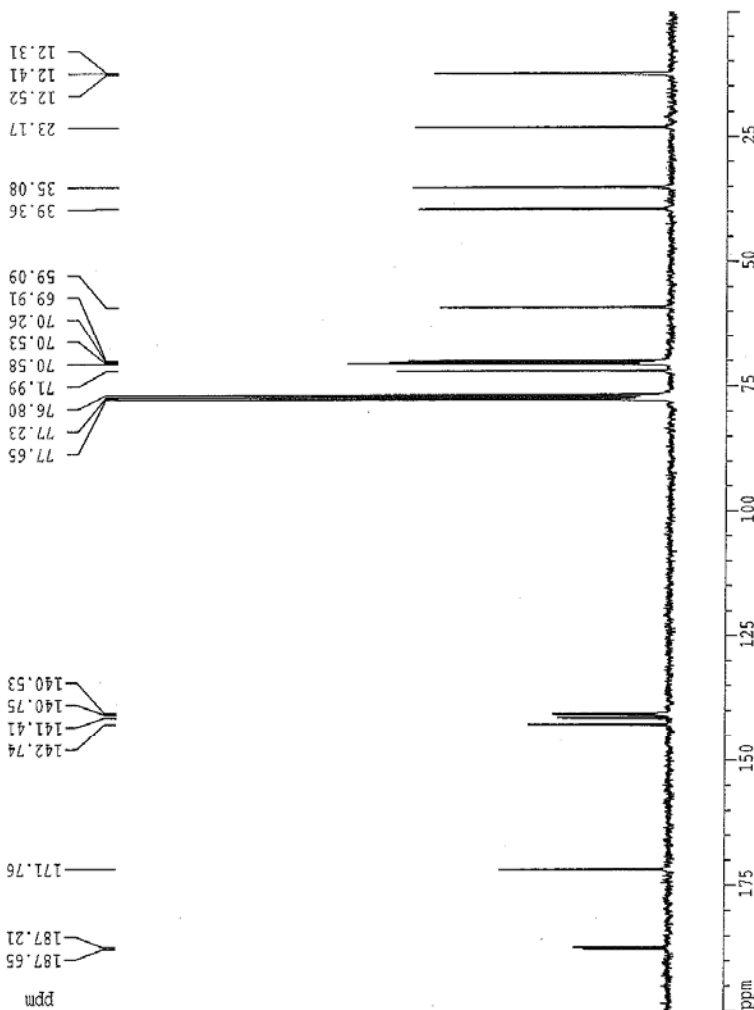


Current Data Parameters
 NAME Q1C-8C03-M6
 EXPNO 2
 PROCNO 1

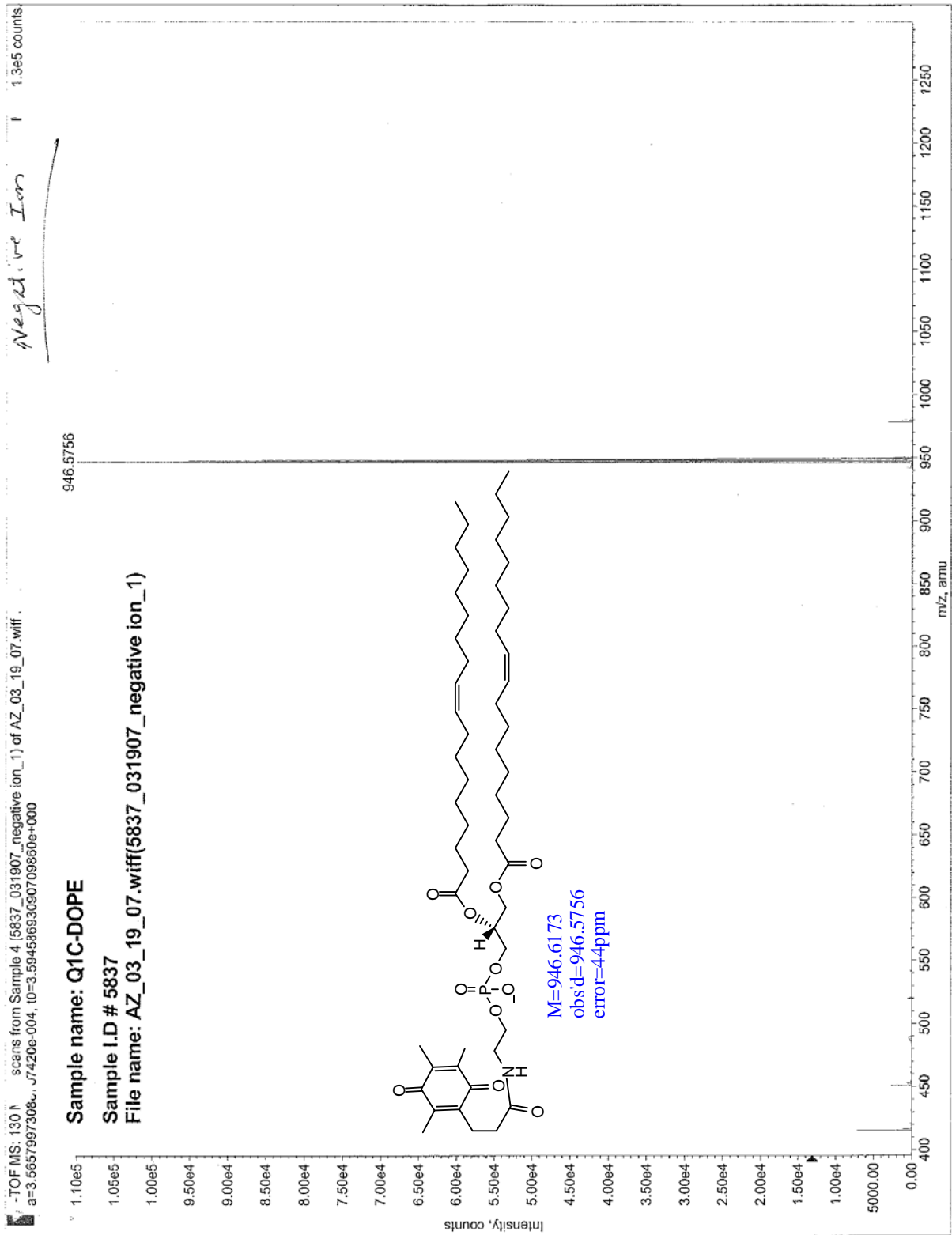
F2 - Acquisition Parameters
 Date 20070108
 Time 16.12
 INSTRUM spect
 PROBD 5 mm Waltz
 PULPROG zgpg30
 TD 16384
 SOLVENT CFC13
 NS 4146
 DS 2
 SFO1 22727.273 Hz
 SFE 1.387163 Hz
 FIDRES 0.3604980 sec
 AQ 32768
 DM 22.000 usec
 DE 31.43 usec
 TE 300.0 K
 D12 0.0002000 sec
 DL6 23.00 dB
 D1 2.0000000 sec
 CPDPRG waltz16
 P31 86.00 usec
 D11 0.03000000 sec
 DL5 23.00 dB
 P1 9.80 usec
 SFO1 75.4751777 MHz
 NUCLEUS 13C

F2 - Processing Parameters
 SI 16384
 SF 75.4677389 MHz
 NDM 0
 SSB 0
 LB 3.00 Hz
 GB 0
 PC 1.40

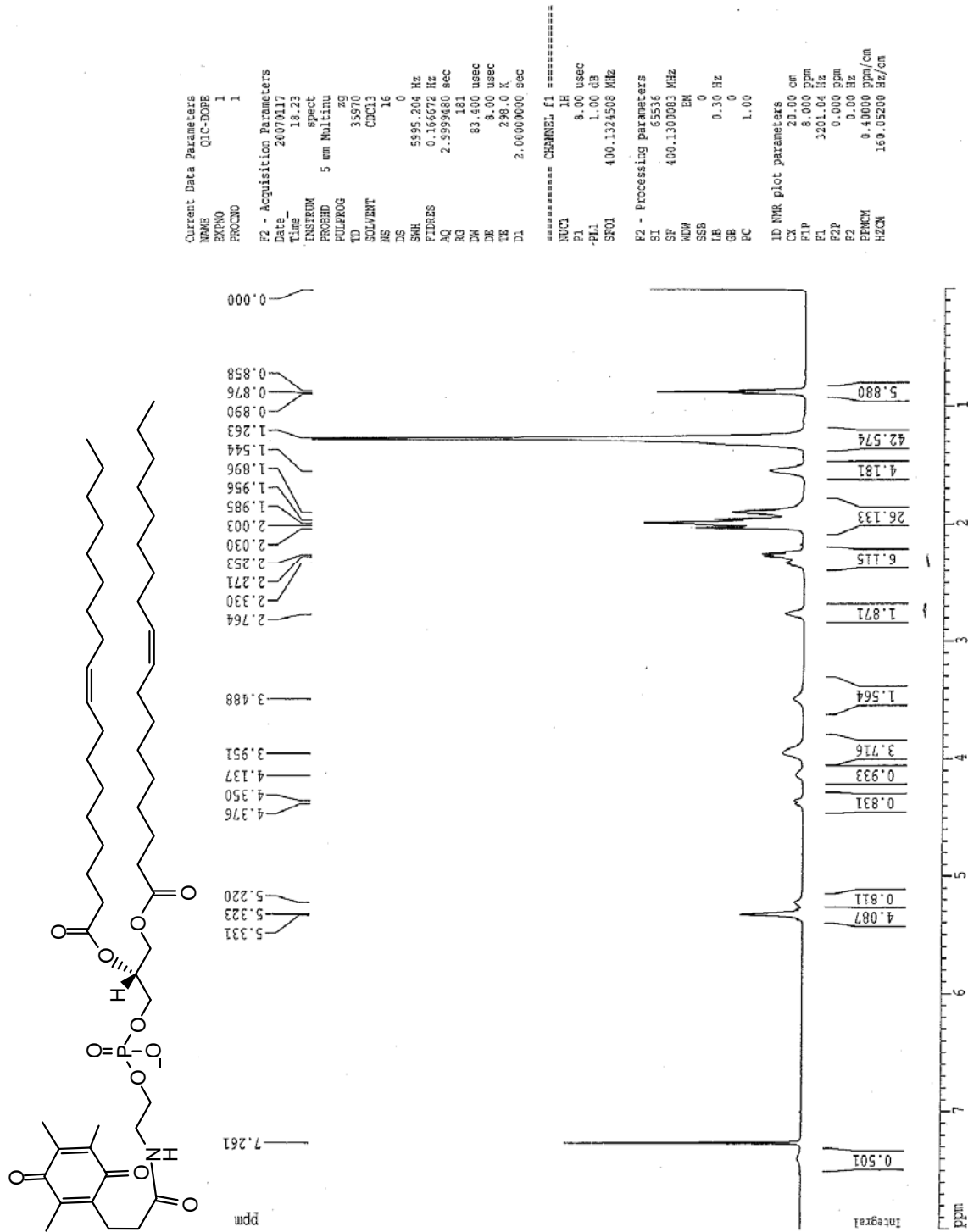
1D NMR plot parameters
 CX 18.00 cm
 FIP 200.000 ppm
 F1 15093.55 Hz
 P2P 0.000 ppm
 F2 0.00 Hz
 PPKCM 11.1111 ppm/cm
 HZCM 838.53033 Hz/cm



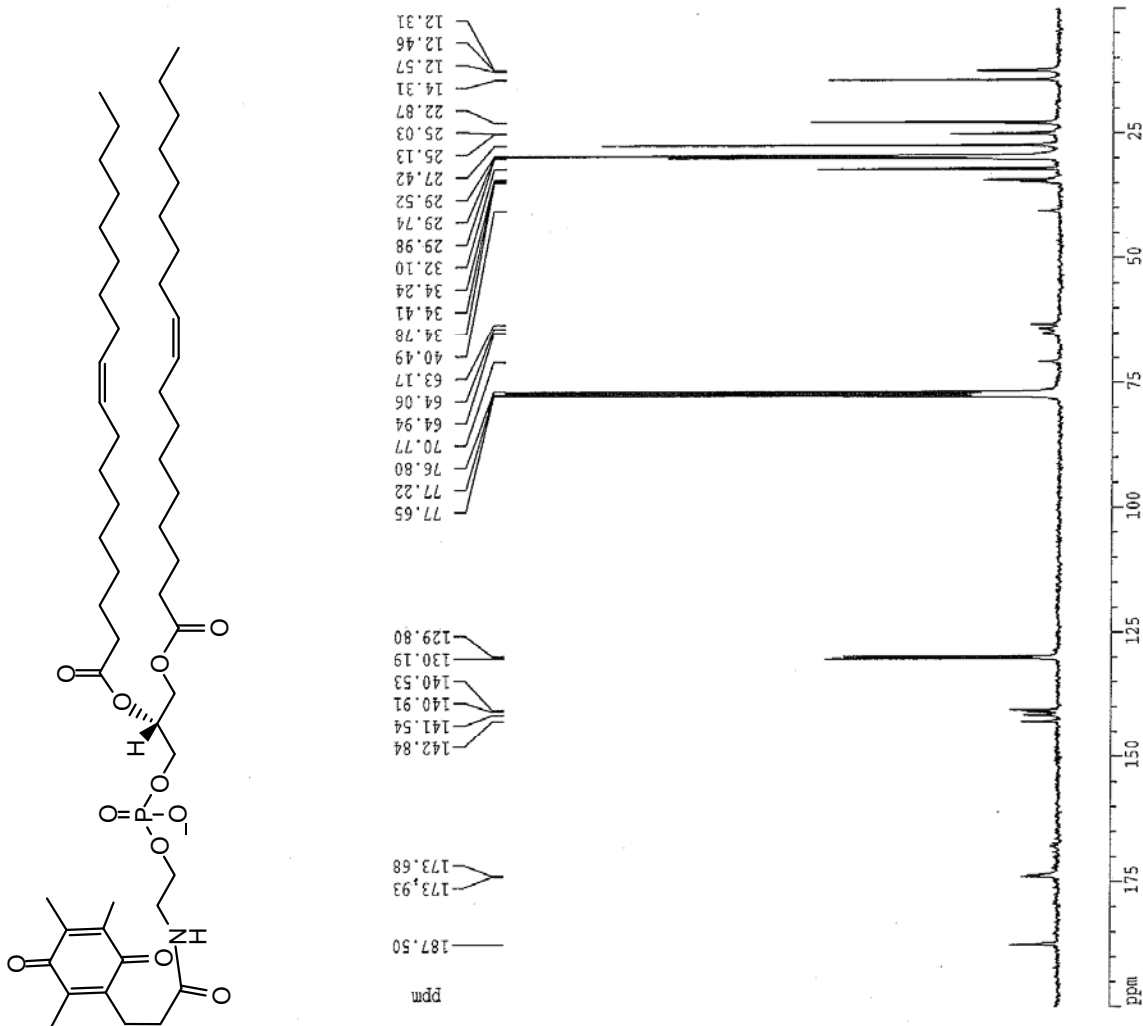
HR-ESI-ToF-MS Data for 1-Q1



¹H NMR Spectral Data for 1-Q1



¹³C NMR Spectral Data for 1-Q1



Current Data Parameters
 NAME Q1C-DOPE
 EXNO 2
 PROCNO 1

F2 - Acquisition Parameters
 Date 20070313
 Time 18.25
 INSTRUM spect
 PROCNO 5 mm Multi
 PULPROG zgpg30
 TD 16384
 SOLVENT Aceton
 NS 20000
 DS 2
 SWE 22727.273 Hz
 FIDRES 1.387163 Hz
 AQ 0.3604980 sec
 RG 32768
 DW 22.000 usec
 DE 31.43 usec
 TR 300.0 X
 D12 0.00002000 sec
 DL4 23.00 dB
 D1 2.00000000 sec
 CPEPRG maltz16
 F31 86.00 usec
 DL1 0.03000000 sec
 DL5 23.00 dB
 F1 9.80 usec
 SF01 75.4751777 MHz
 NUCLEUS 13C

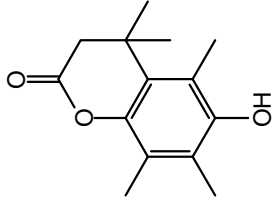
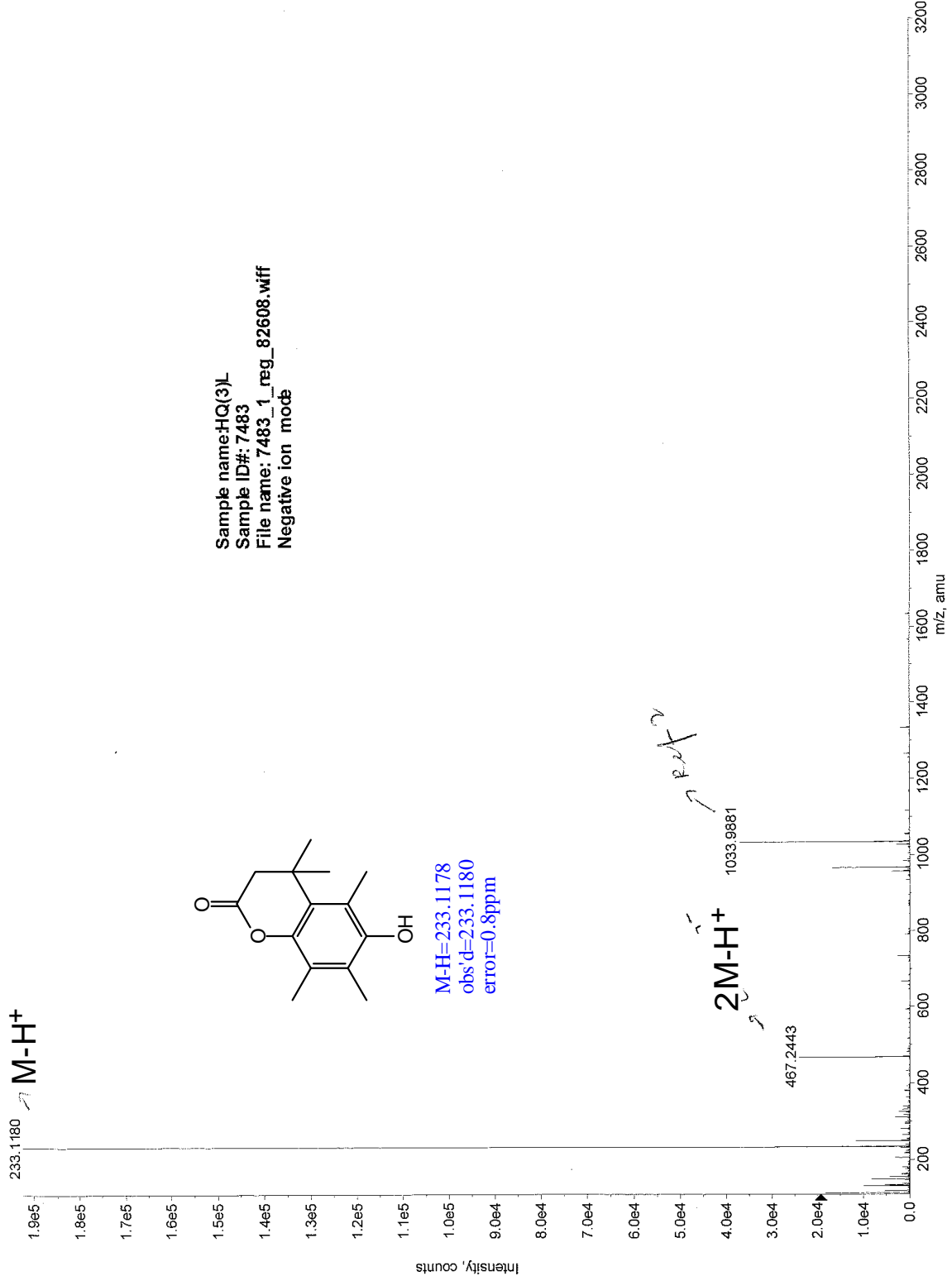
F2 - Processing parameters
 SI 16384
 SF 75.4677347 MHz
 EM
 SSB 0
 LB 5.00 Hz
 GB 0
 PC 1.40

1D NMR plot parameters
 CX 16.00 cm
 FLP 200.000 ppm
 F1 15093.55 Hz
 F2P 0.000 ppm
 F2 0.00 Hz
 FREQM 11.1111 ppm/cm
 HZCM 838.53033 Hz/cm

HR-ESI-ToF-MS Data for 3-HQ3

Max: 1.9e5 counts

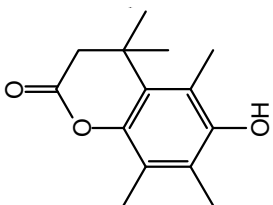
TOF MS: 0.262 to 0.440 min from 7483_1_neg_82608.wiff Agilent



M-H=233.1178
obs'd=233.1180
error=0.8ppm

Sample name: HQ(3)L
Sample ID#: 7483
File name: 7483_1_neg_82608.wiff
Negative ion mode

¹H NMR Spectral Data for 3-HQ3



```

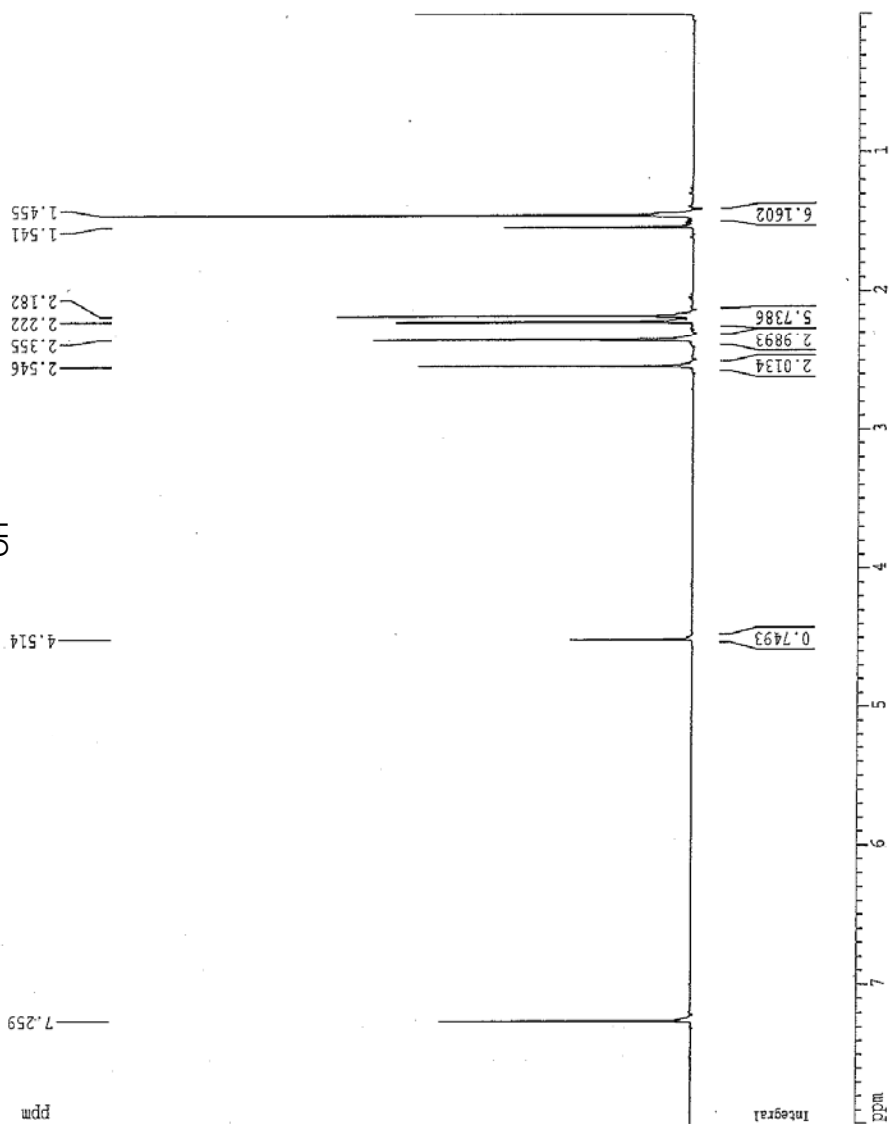
Current Data Parameters
NAME      Q3-lactone
EXPNO     1
PROCNO    1

F2 - Acquisition Parameters
Date_     20040908
Time      19.37
INSTRUM   spect
PROBHD    5 mm Multina
PULPROG   zg30
TD         35970
SOLVENT   D2O
NS         16
DS         0
SMH        5995.204 Hz
FIDRES     0.166672 Hz
AQ         2.9999480 sec
RG         362
DW         83.400 usec
DE         8.00 usec
TE         298.0 K
D1         2.0000000 sec

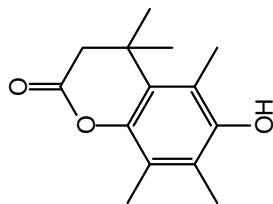
===== CHANNEL f1 =====
NUC1      1H
P1         8.00 usec
PL1        1.00 dB
SFO1      400.1324903 MHz

F2 - Processing parameters
SI         65536
SF         400.1300099 MHz
WDW        EM
SSB        0
LB         0.30 Hz
GB         0
PC         1.00

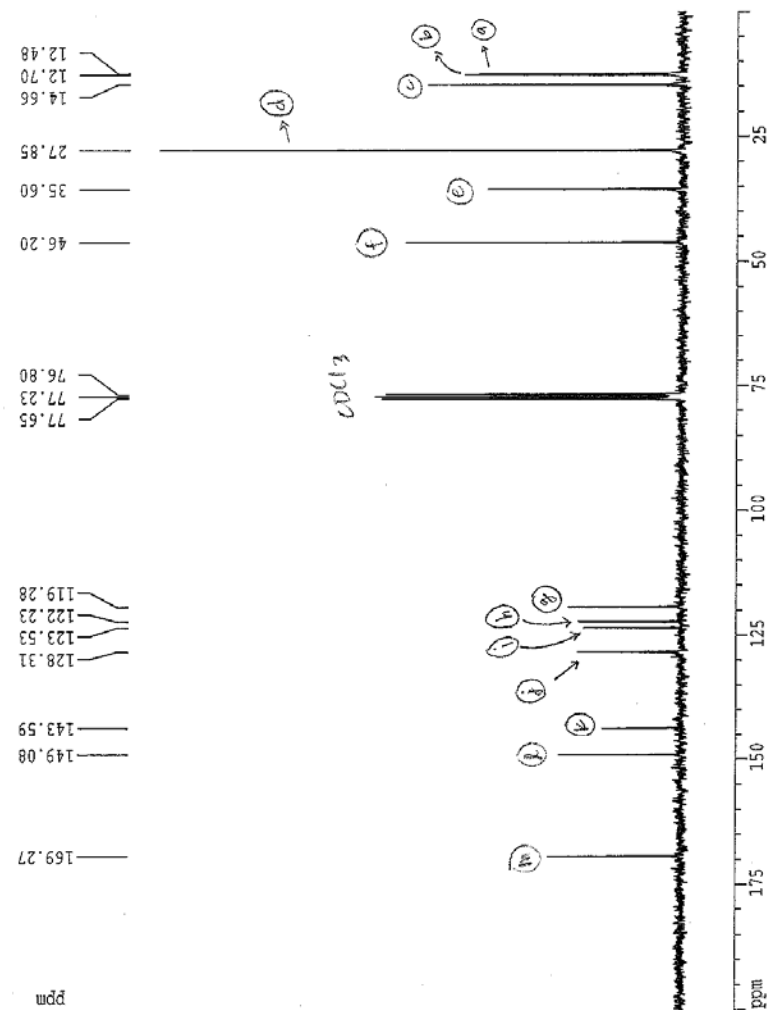
LD NMR plot parameters
CX         20.00 cm
FLP        8.000 ppm
F1         3201.04 Hz
F2P        0.000 ppm
F2         0.00 Hz
P0/M0/M1  0.40000 ppm/cm
HEC4       160.05200 Hz/cm
    
```



¹³C NMR Spectral Data for 3-HQ3



product from a 10 g scale starting material (triMe Quinone)



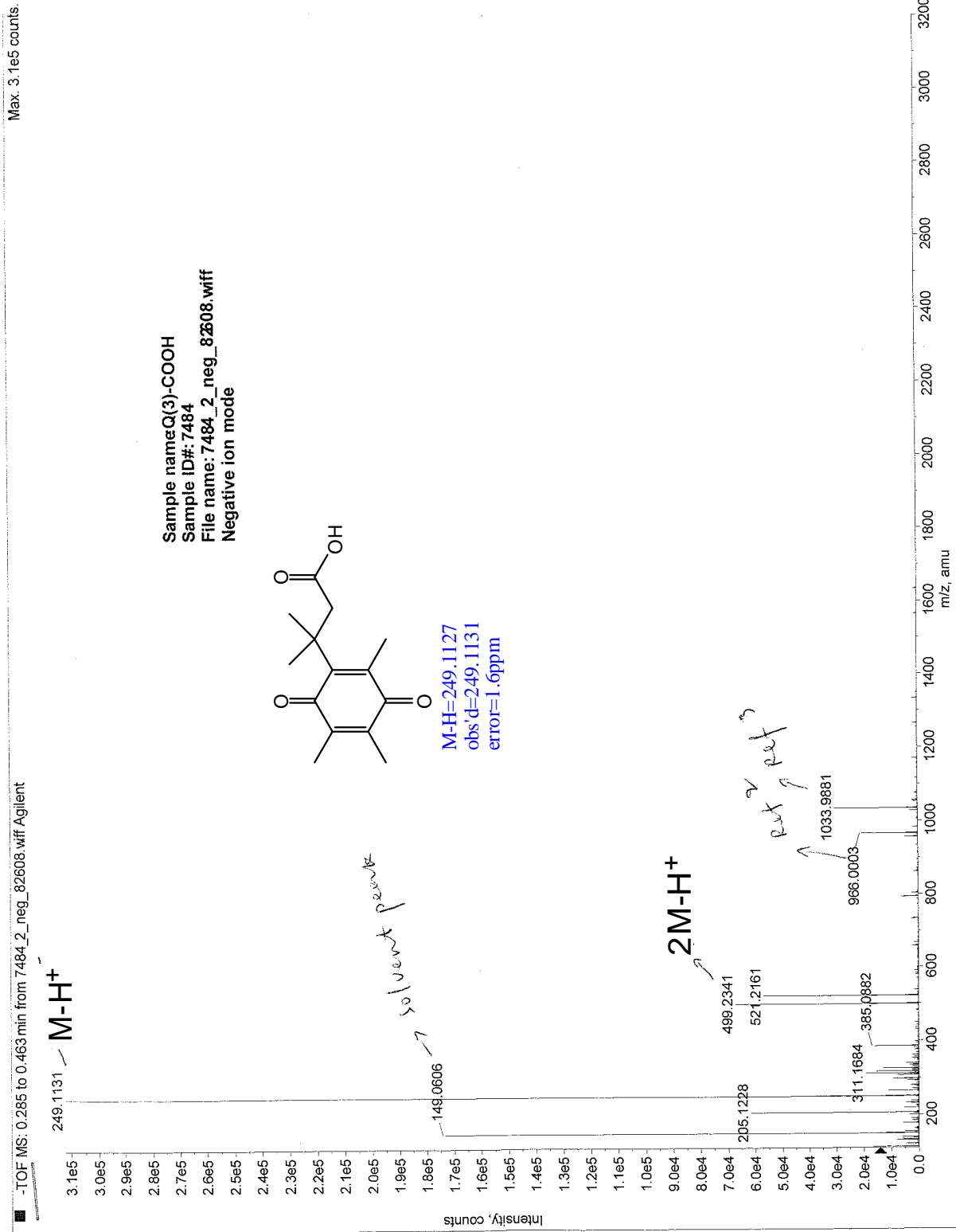
Current Data Parameters
 NAME G3-lactone
 EXPNO 3
 PROCNO 1

F2 - Acquisition Parameters
 Date_ 20040928
 Time 11.15
 INSTRUM spect
 PROBRD 5 mm Multinu
 PULPROG zgpg30
 TD 65536
 FIDRES 16384
 SOLVENT CDCl3
 NS 742
 DS 2
 SWH 22727.273 Hz
 FIDRES 1.387163 Hz
 AQ 0.3604980 sec
 RG 32768
 DW 22.000 usec
 DE 31.43 usec
 TE 300.0 K
 D12 0.000200 sec
 DL6 23.00 dB
 D1 2.00000000 sec
 CDEPRG waltz16
 P11 85.00 usec
 D11 0.0300000 sec
 DL5 23.00 dB
 P1 9.80 usec
 SFO1 75.4751777 MHz
 NUCLEUS 13C

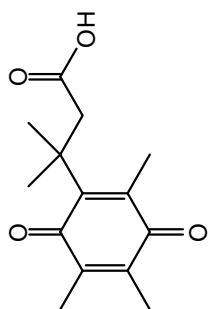
F2 - Processing parameters
 SI 16384
 SF 75.4677389 MHz
 NDW EM
 SSB 0
 LB 3.00 Hz
 CB 0
 PC 1.40

1D NMR plot parameters
 CX 18.00 cm
 F1P 200.000 ppm
 F1 15083.55 Hz
 F2P 0.000 ppm
 F2 0.00 Hz
 PPGW 11.1111 ppm/cm
 HCN 838.53033 Hz/cm

HR-ESI-ToF-MS Data for 4-Q3



¹H NMR Spectral Data for 4-Q3



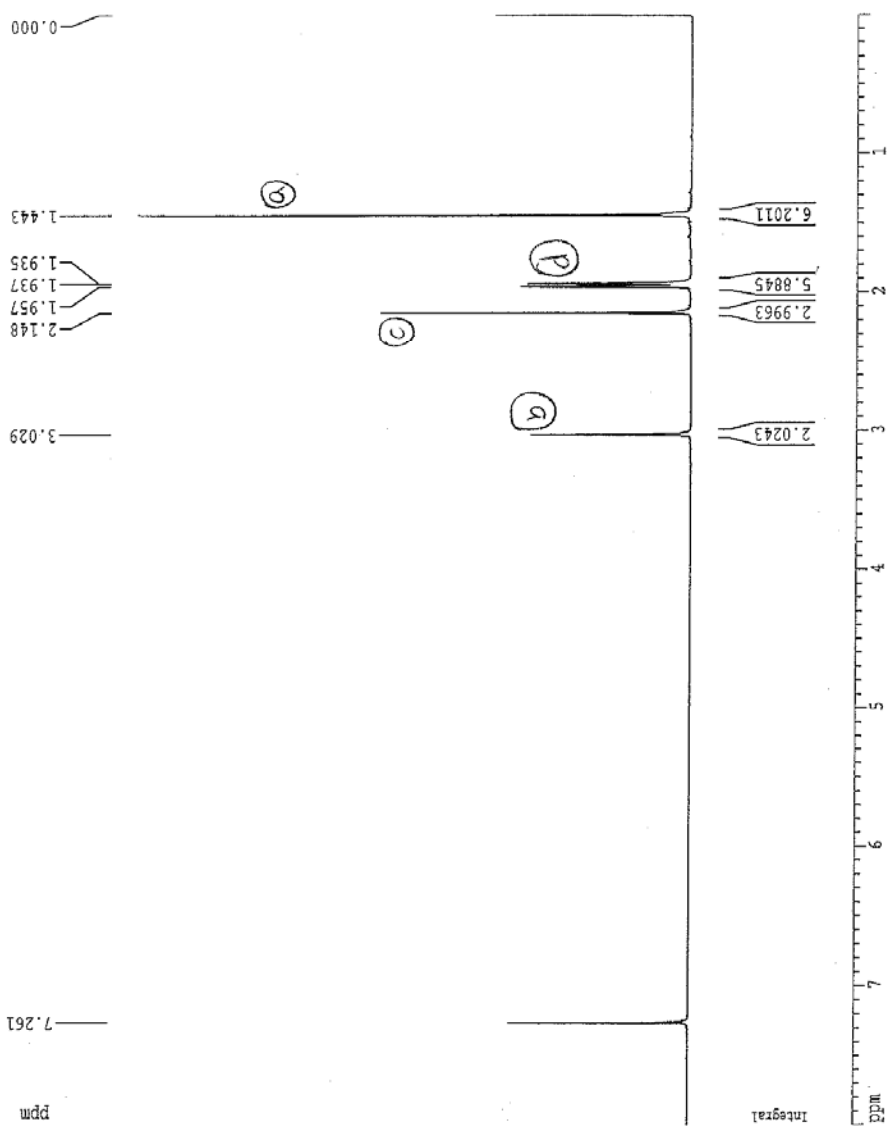
Current Data Parameters
 NAME Q3-COOH
 EXNO 1
 PROCNO 1

F2 - Acquisition Parameters
 Date 20040908
 Time 19.30
 INSTRUM spect
 PROCNO 5 mm Multinu
 PULPROG zg
 TD 35970
 SOLVENT CDCl3
 NS 16
 DS 0
 SWE 5995.204 Hz
 FIDRES 0.166672 Hz
 AQ 2.9998480 sec
 RG 912.3
 DW 83.400 usec
 DB 8.00 usec
 TE 298.0 K
 D1 2.0000000 sec

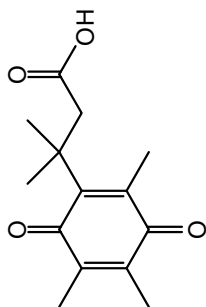
***** CHANNEL 1 *****
 NUC1 1H
 P1 8.00 usec
 PL3 1.00 dB
 SFO1 400.1124508 MHz

F2 - Processing parameters
 SI 65516
 SF 400.1130094 MHz
 WDW EM
 SSB 0
 LB 0.30 Hz
 GB 0
 PC 1.00

1D NMR plot parameters
 CX 20.00 cm
 PIP 8.000 ppm
 F1 3201.04 Hz
 F2 0.000 ppm
 PPMCM 0.46000 ppm/cm
 KZON 160.05200 Hz/cm



¹³C NMR Spectral Data for 4-Q3

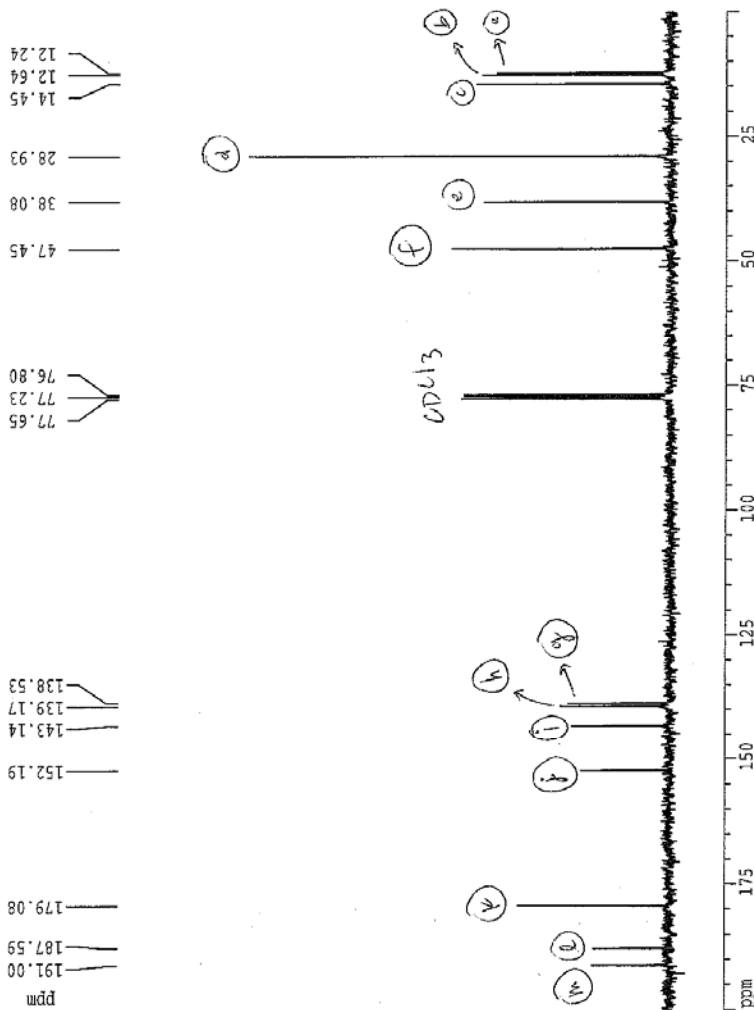


Current Data Parameters
 NAME Q3-COOH
 EXPNO 2
 PROCNO 1

F2 - Acquisition Parameters
 Date 20041018
 Time 19.45
 INSTRUM spect
 PROBRD 5 mm WCL1
 PULPROG zgpg30
 ID 16384
 SOLVENT CDCl3
 NS 253
 DS 2
 SWH 22727.273 Hz
 FIDRES 1.387163 Hz
 AQ 0.3604980 sec
 RG 32768
 DW 22.000 usec
 DE 31.43 usec
 TE 300.0 K
 D12 0.0000200 sec
 DL6 23.00 dB
 D1 2.00000000 sec
 CPDPRG waltz16
 P31 86.00 usec
 D11 0.0300000 sec
 DL5 23.00 dB
 P1 9.00 usec
 SFCL 75.4751222 MHz
 NUC13C

F2 - Processing parameters
 SI 16384
 SF 75.4677361 MHz
 MDK EM
 SSB 0
 LB 3.00 Hz
 GB 0
 PC 1.40

LD RMK plot parameters
 CX 18.00 cm
 FIF 200.000 ppm
 F1 15093.55 Hz
 F2F 0.000 ppm
 F2 0.00 Hz
 PERCM 11.1111 ppm/cm
 HZCM 836.53033 Hz/cm

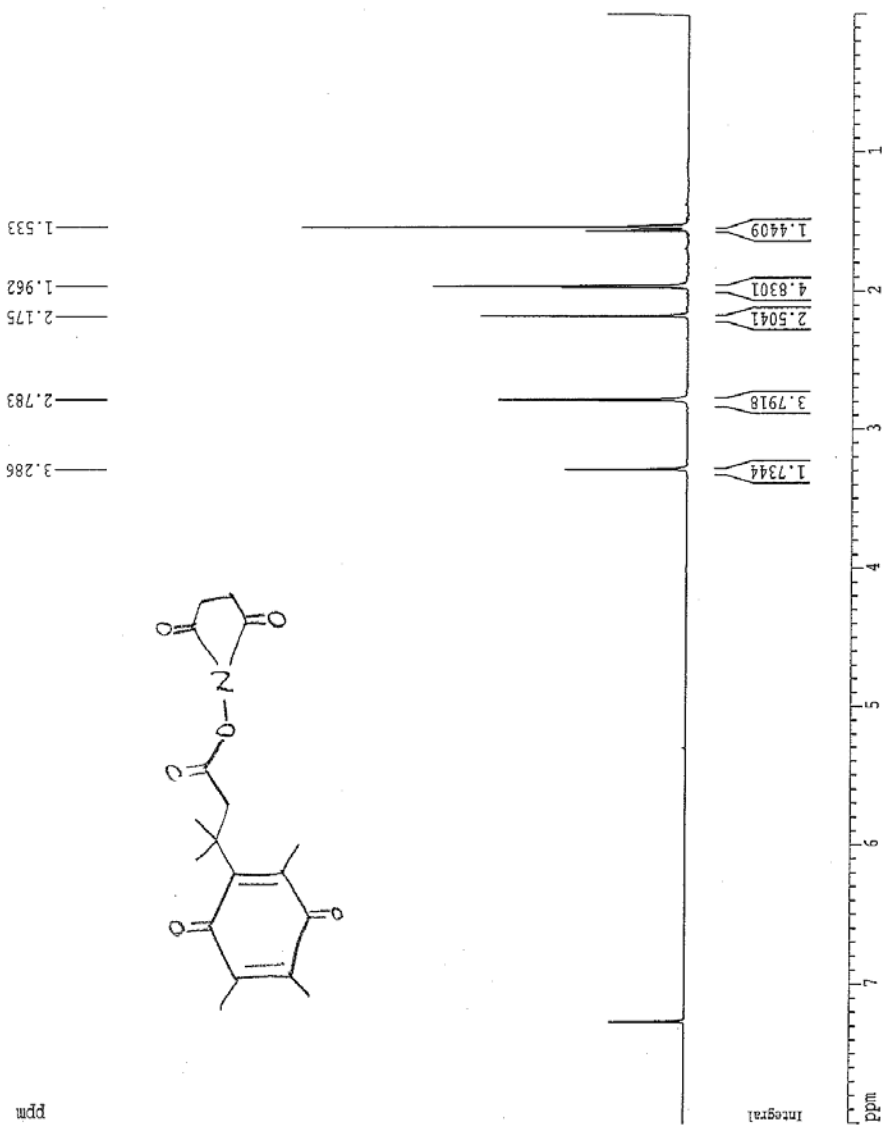


¹H NMR Spectral Data for 5-Q3

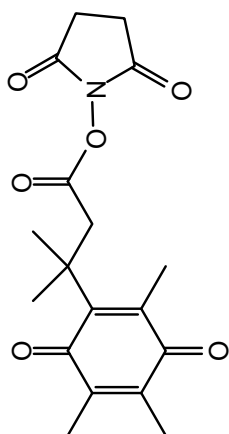
Current Data Parameters
 NAME Q3-NHS
 EXNO 1
 PROCNO 1

F2 - Acquisition Parameters
 Date 20041115
 Time 11.44
 INSTRUM spect
 PROCNO 5
 PULPROG zgpg30
 TD 32768
 SOLVENT DMSO
 NS 16
 DS 0
 SWH 5995.204 Hz
 FIDRES 0.166672 Hz
 AQ 2.9999480 sec
 RG 143.7
 DM 83.400 usec
 DE 8.00 usec
 TE 298.0 K
 D1 2.0000000 sec

***** CHANNEL *****
 NUC1 1H
 P1 8.00 usec
 PL1 1.00 dB
 SFO1 400.1324508 MHz
 F2 - Processing parameters
 SI 65536
 SF 400.1300083 MHz
 MDW EM
 SSB 0
 LB 0.30 Hz
 GB 0
 PC 1.00
 LD NMR plot parameters
 CK 20.00 cm
 FLP 8.000 ppm
 F1 3201.04 Hz
 F2 0.000 ppm
 FZ 0.00 Hz
 PEAKM 0.46000 ppm/cm
 HZCM 160.05200 Hz/cm



¹³C NMR Spectral Data for 5-Q3

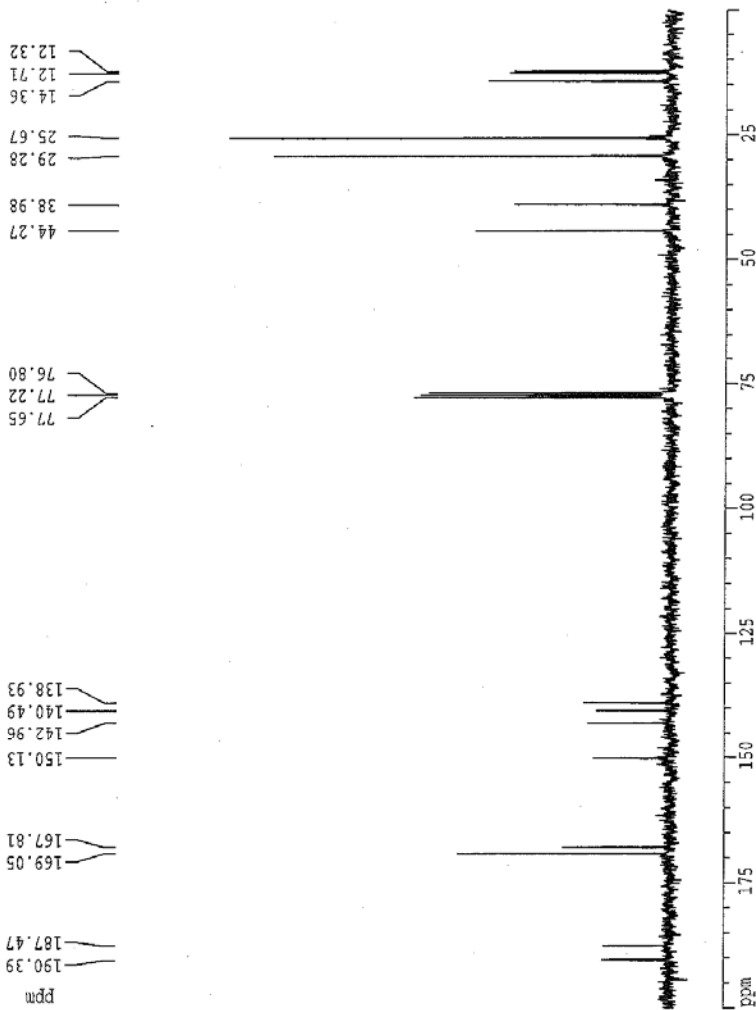


Current Data Parameters
 NAME Q3-NES
 EXPRD 2
 PROCNO 1

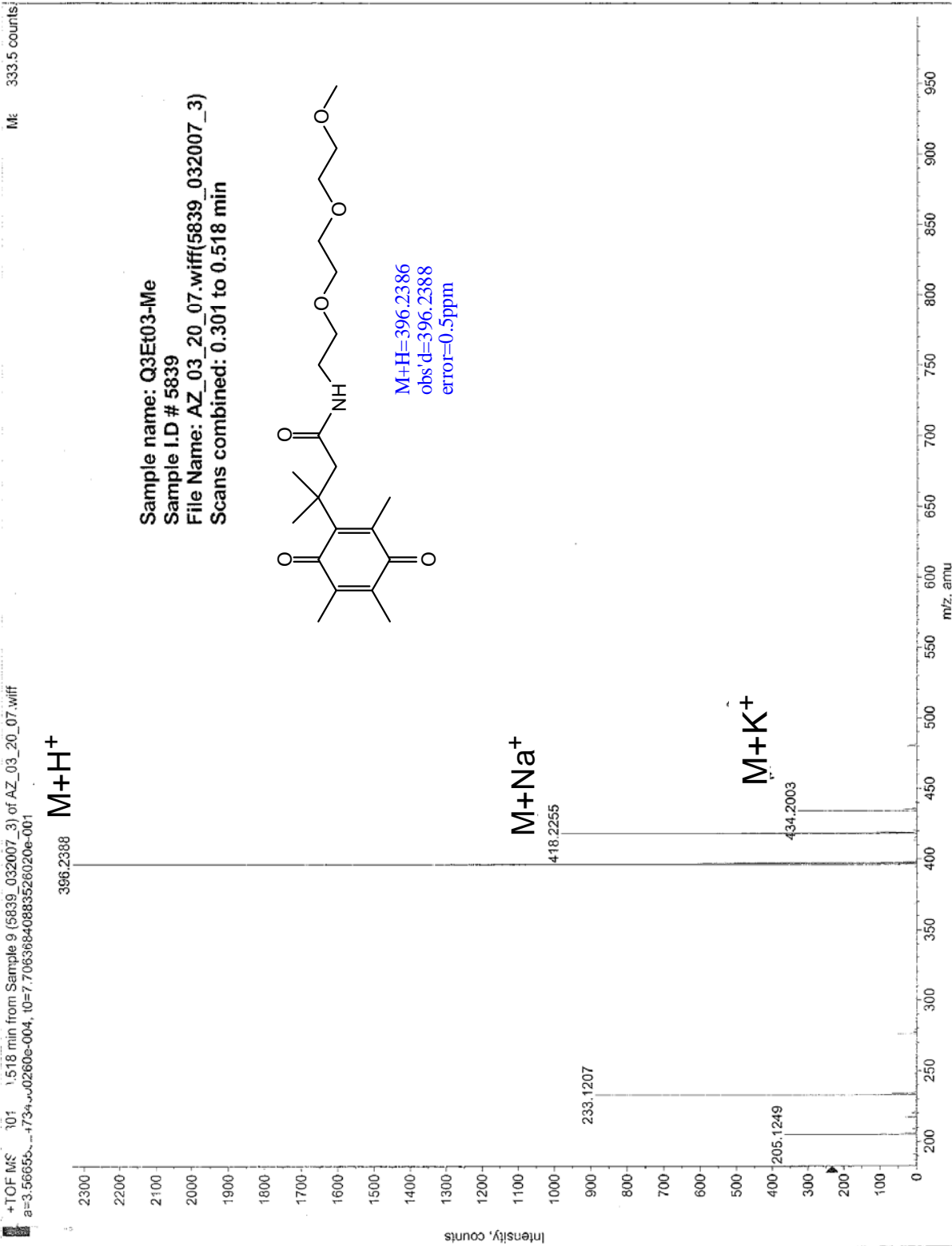
F2 - Acquisition Parameters
 Date 20041018
 Time 19.25
 INSTRUM spect
 PULPROG zgpg30
 TD 16384
 SOLVENT CCl3
 NS 313
 DS 2
 SMC 22727.273 Hz
 F1RES 1.387163 Hz
 AQ 0.3604980 sec
 RG 32768
 DM 22.000 usec
 DE 31.43 usec
 TE 300.0 K
 D12 0.0000200 sec
 Dd6 23.00 dB
 D1 2.0000000 sec
 CPMPRG waltz16
 P31 86.00 usec
 D11 0.0300000 sec
 D15 23.00 dB
 P1 9.80 usec
 SFO1 75.4751722 MHz
 NUC13 13C

F2 - Processing parameters
 SI 16384
 SF 75.4677389 MHz
 WDW EM
 SSB 0
 LB 3.00 Hz
 GB 0
 PC 1.40

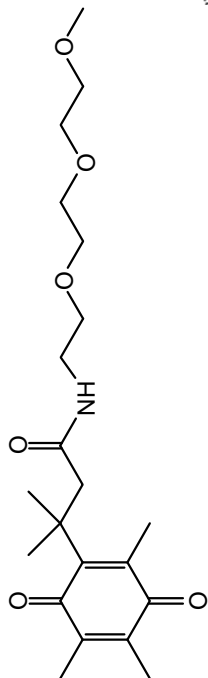
1D NMR plot parameters
 CX 18.00 cm
 FAP 200.000 ppm
 F1 15093.55 Hz
 F2P 0.000 ppm
 F2 0.00 Hz
 PPKCM 11.1111 ppm/cm
 HECM 636.53033 Hz/cm



HR-ESI-ToF-MS Data for 2-Q3



^1H NMR Spectral Data for 2-Q3

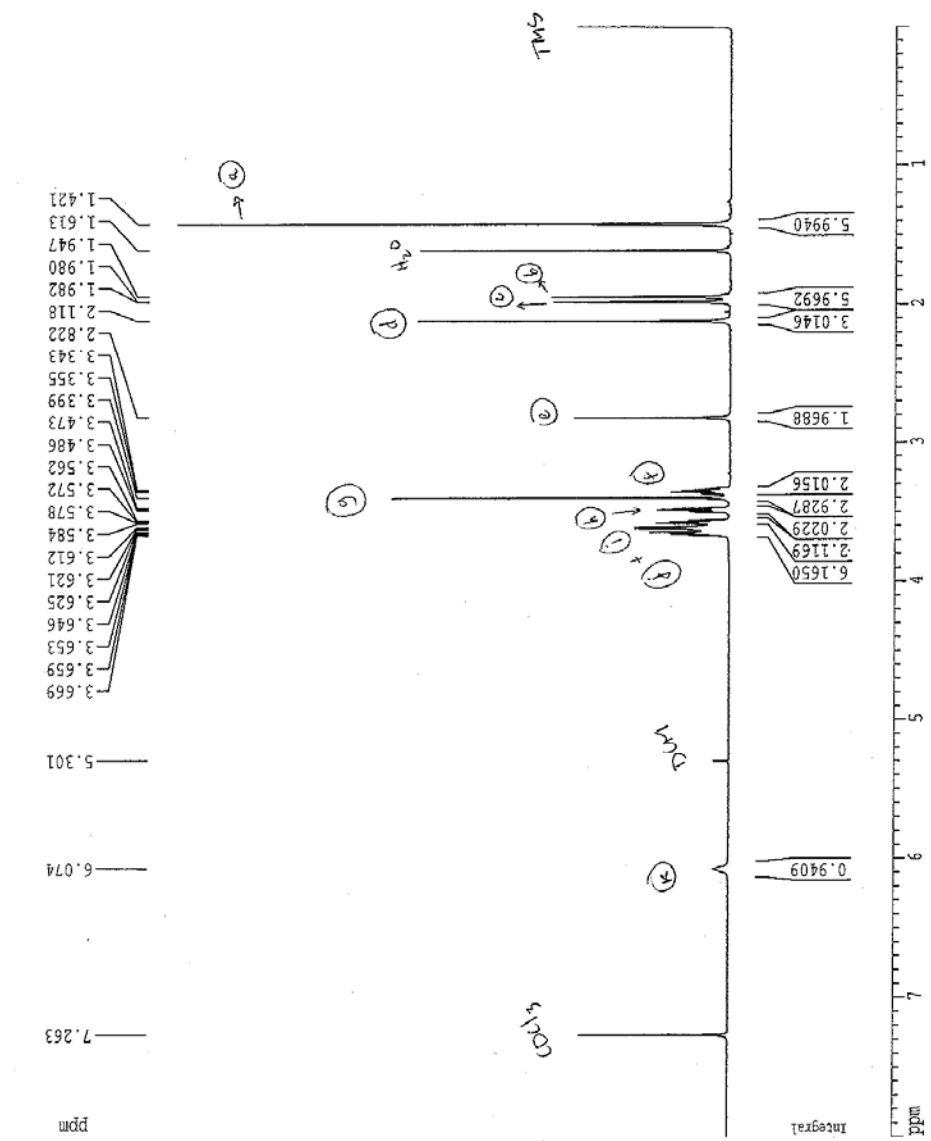


SOLVENT: DMF

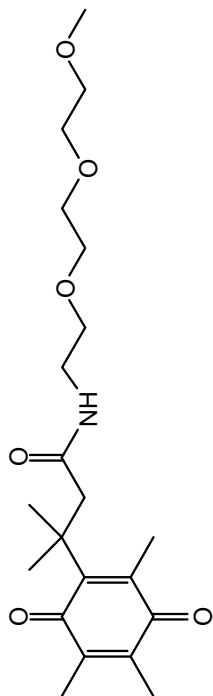
EQ03

NAME: Q3-NH-EQ03-Me
 EXPNO: 1
 PROCNO: 1
 Date: 20030628
 Time: 13.15
 INSTRUM: spect
 PROCNO: 5 mm Multinu
 PULPROG: zg
 ID: 23960
 SOLVENT: MeOH
 NS: 16
 DS: 0
 SWH: 5995.204 Hz
 FIDRES: 0.250008 Hz
 AQ: 1.9599820 sec
 RG: 1024
 DM: 83.400 ussec
 DE: 8.00 ussec
 TE: 298.0 K
 D1: 2.0000000 sec

***** CHANNEL f1 *****
 NUC1: 1H
 P1: 8.00 ussec
 PL1: 1.00 dB
 SFO1: 400.1324508 MHz
 F2 - Processing parameters
 SI: 65536
 SF: 400.1300080 MHz
 WDW: EM
 SSB: 0
 LB: 0.30 Hz
 GB: 0
 PC: 1.00
 LD NMR plot parameters
 CX: 20.00 cm
 F1: 8.000 ppr
 FL: 3201.04 Hz
 F2: 0.000 ppm
 FZ: 0.00 Hz
 PPMCM: 0.40000 ppm/cm
 HZCM: 160.05200 Hz/cm



¹³C NMR Spectral Data for 2-Q3

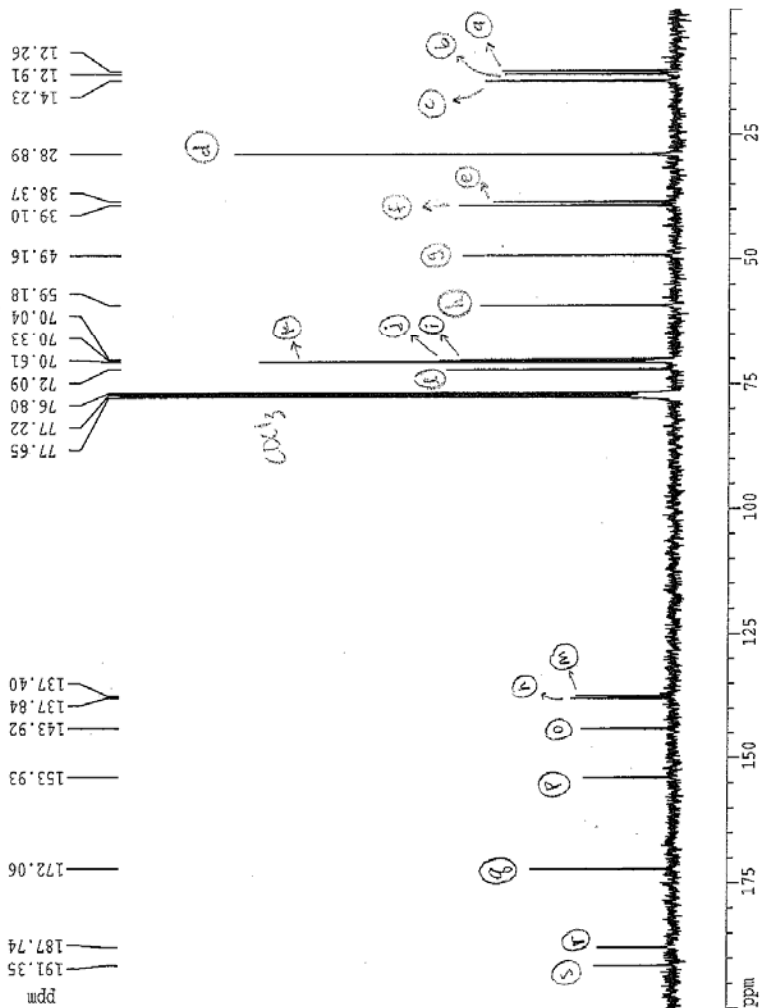


Current Data Parameters
 NAME Q3-NH-FL03Me
 EXNO 2
 PROCNO 1

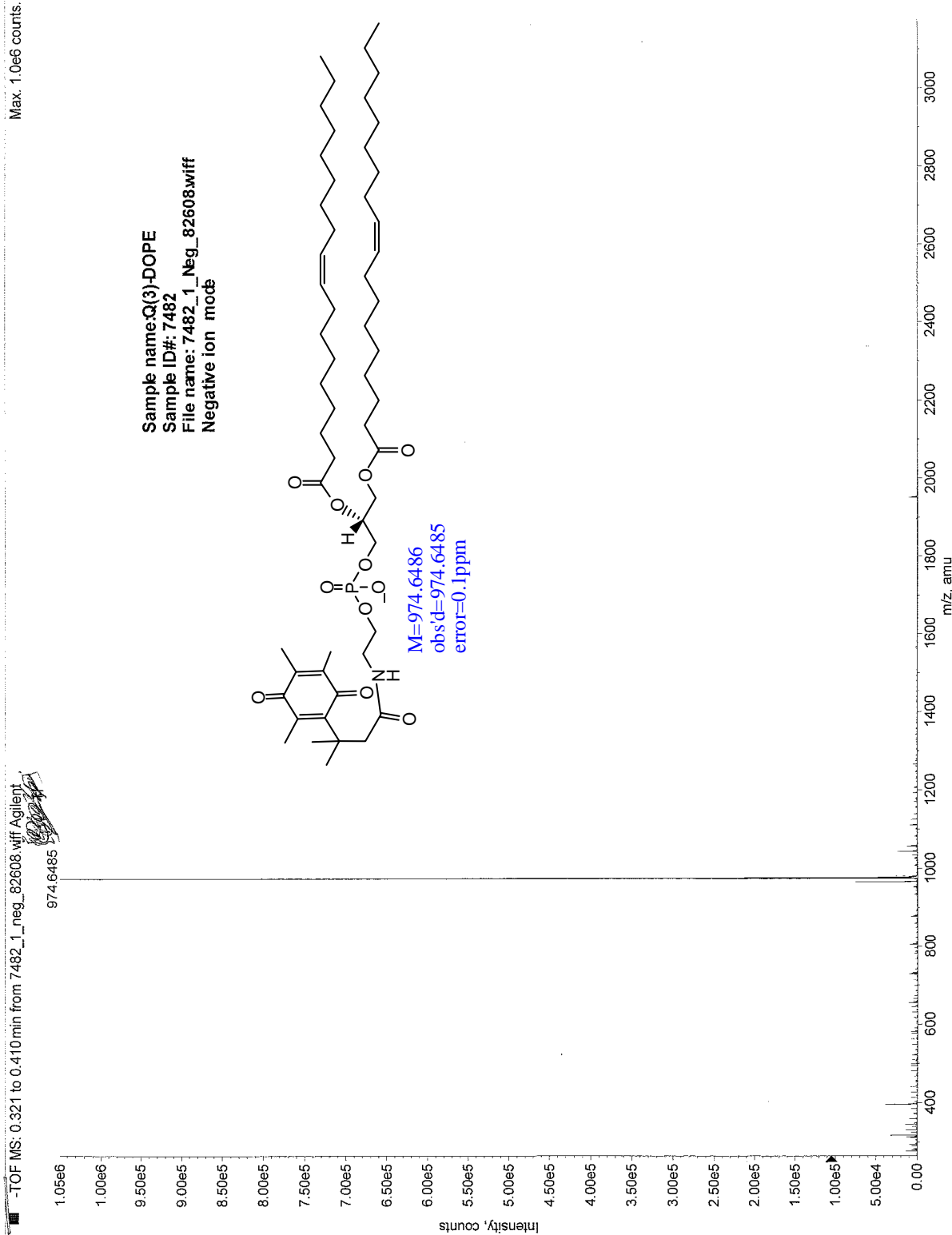
F2 - Acquisition Parameters
 Date_ 20050715
 Time 15.22
 INSTRUM spect
 PROCNO 5 mm Multi
 PULPROG zgpg30
 ID 16384
 CCCL3
 SOLVENT 20000
 NS 2
 DS 2
 SMH 22727.273 Hz
 FIDRES 1.387763 Hz
 AQ 0.3664680 sec
 RG 32768
 DM 22.400 usec
 DE 11.43 usec
 TE 300.0 K
 D12 0.0000200 sec
 DL6 23.00 GB
 D1 2.0000000 sec
 CTEPRG waltz16
 P31 86.00 usec
 D11 0.0300000 sec
 D15 23.00 dB
 P1 9.80 usec
 SFO1 75.4751777 MHz
 NUCLEUS ¹³C

F2 - Processing parameters
 SI 16384
 SF 75.4677361 MHz
 WDN 0
 SSB 0
 LB 3.00 Hz
 GB 0
 PC 1.40

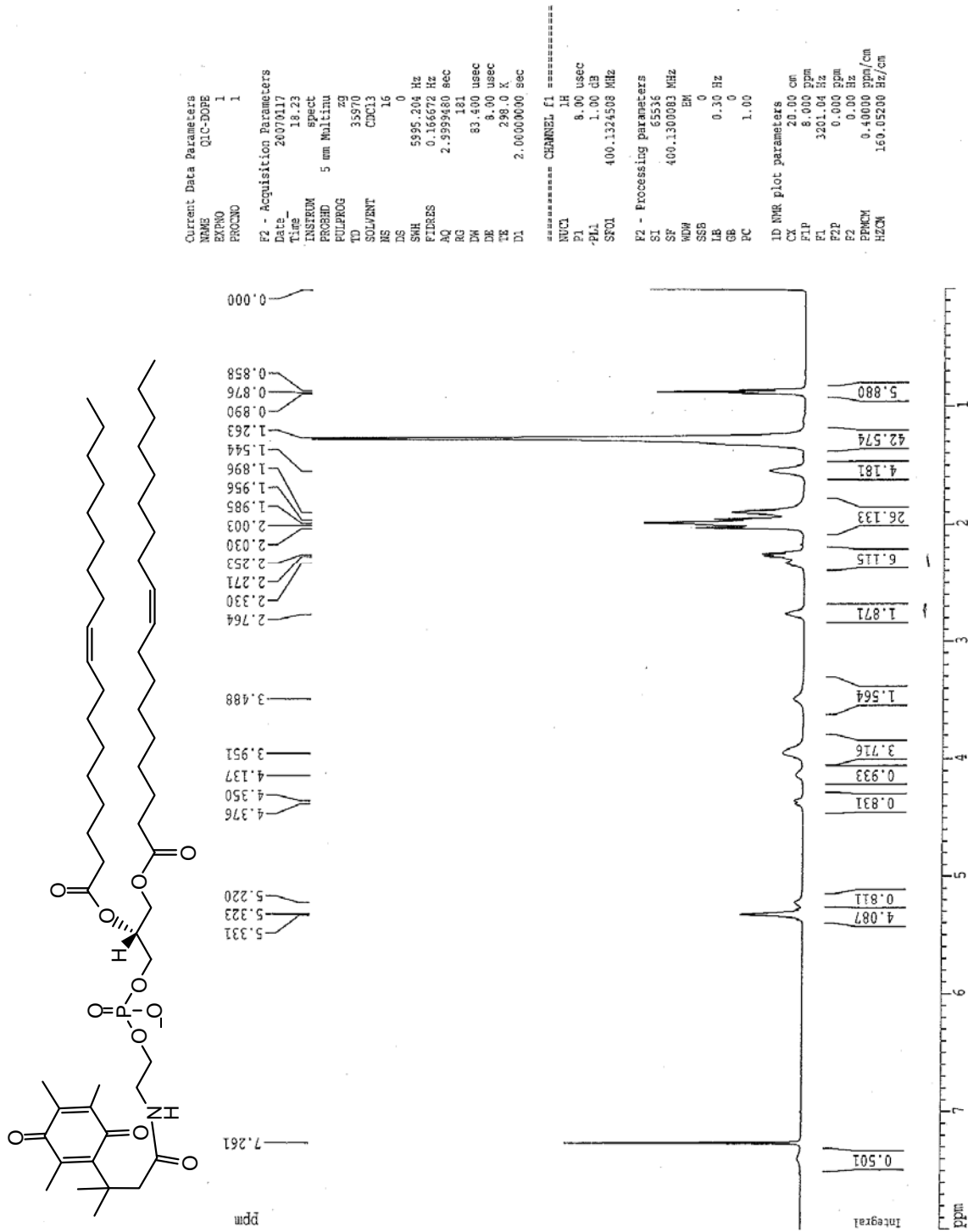
1D NMR plot parameters
 CX 18.00 cm
 F1F 200.000 ppm
 F1 15093.55 Hz
 F2F 0.000 ppm
 F2 0.00 Hz
 PRGM 11.11111 ppm/cm
 HZCN 838.53033 Hz/cm



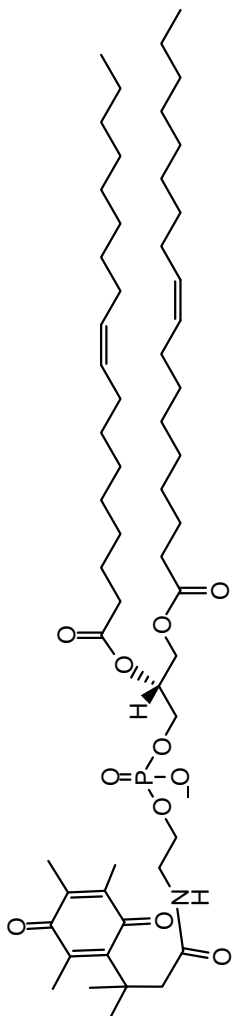
HR-ESI-ToF-MS Data for 1-Q3



¹H NMR Spectral Data for 1-Q3



¹³C NMR Spectral Data for 1-Q3



Current Data Parameters
 NAME Q3-D0PE
 EXNO 3
 PROCNO 1

F2 - Acquisition Parameters
 Date 20060215
 Time 18:52
 INSTRUM spect
 PROCNO 5 mm Multi
 PULPROG zgpg30
 TD 65536
 SFO1 125.761 MHz
 SOLVENT CDCl3
 NS 19500
 DS 2
 SWH 22727.273 Hz
 FIDRES 1.387163 Hz
 AQ 0.3604980 sec
 RG 32768
 DW 22.000 usec
 DE 11.43 usec
 TE 300.0 K
 D12 0.000200 sec
 D16 23.00 dB
 D1 2.0000000 sec
 CPDPRG waltz16
 P11 86.00 usec
 D11 0.0300000 sec
 D15 23.00 dB
 P1 9.80 usec
 SFO1 75.4751727 MHz
 NUCLEUS ¹³C

F2 - Processing parameters
 SI 15384
 SF 75.4677347 MHz
 WDM EM
 SSB 0
 LB 5.00 Hz
 GB 0
 FC 1.40

1D NMR plot parameters
 CX 18.00 cm
 F1P 200.000 ppm
 F1 15093.55 Hz
 F2P 0.000 ppm
 F2 0.00 Hz
 PPM0W 11.1111 ppm/cm
 HZCM 838.53033 Hz/cm

