

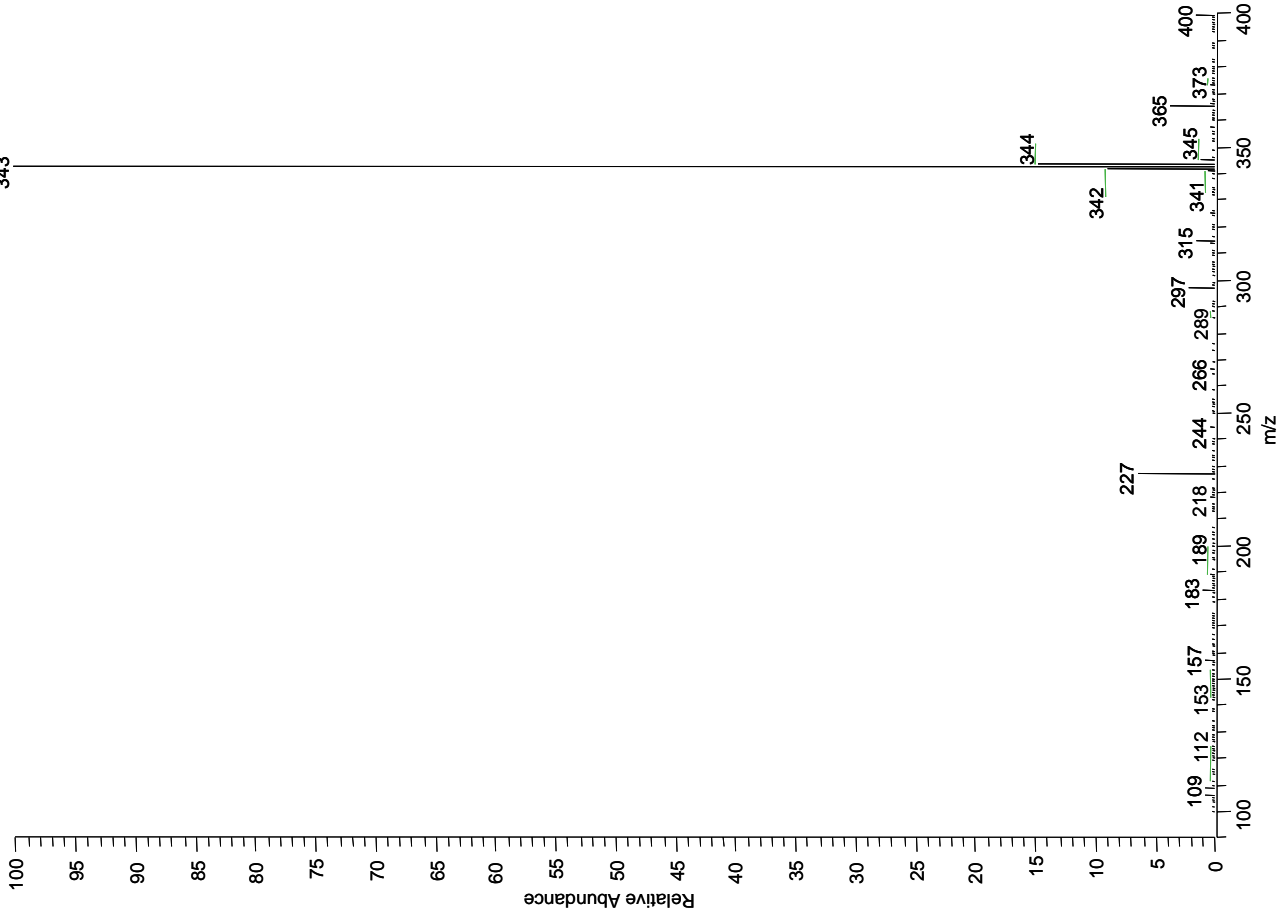
Supporting Information

Fig 1S. Mass spectrum of [$^{15}\text{N}_5$]Cro-dG. A, Full scan mass spectrum. B, MS/MS spectrum of parent ion of [$^{15}\text{N}_5$]Cro-dG (m/z 343)

Table 1S. Levels of Cro-dGuo in DNA from human liver and lung.

A

F: + c ESI Full ms [100.00-800.00]

**B**

F: + c ESI Full ms2 343.00@30.00 [90.00-350.00]

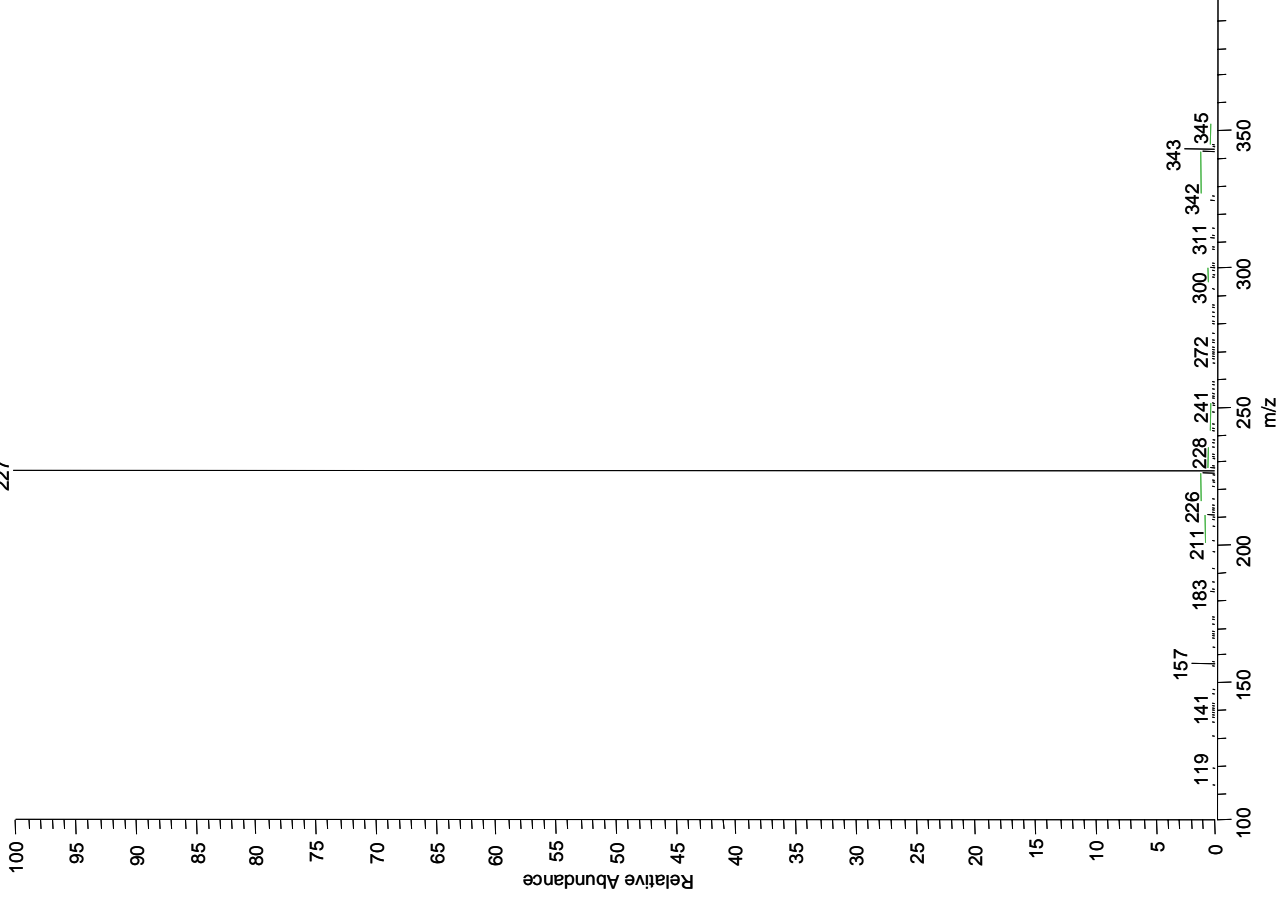


Table 1S.

Tissue	No. of samples analyzed	No. of samples in which Cro-dGuo were detected	MS area ratio ^a		Cro-dGuo levels ^b		Amount of DNA analyzed ^c (mg)
			(6S, 8S)-2	(6R, 8R)-2	(6S, 8S)-2	(6R, 8R)-2	
Liver	23	4	0.08	0.17	6.50	14.1	0.48
			0.03	0.03	3.52	3.83	0.32
			0.09	0.08	6.19	5.69	0.58
			0.23	0.17	10.6	7.84	0.89
			Mean ± SD	6.70 ± 2.92	7.87 ± 4.47		
Lung	45	16	0.17	0.18	10.1	11.0	0.73
			0.04	0.07	3.14	5.69	0.56
			0.06	0.10	5.24	9.41	0.46
			0.04	0.08	17.1	30.4	0.11
			0.09	0.15	10.5	17.8	0.34
			0.12	0.18	7.18	10.6	0.69
			0.08	0.15	7.79	15.3	0.39
			0.23	0.38	5.73	9.57	1.61
			0.12	0.22	3.61	6.51	1.37
			0.03	0.07	7.87	16.9	0.18
			0.11	0.17	13.0	21.3	0.32
			0.06	0.15	9.27	23.0	0.26
			0.07	0.21	4.47	13.3	0.64
			0.24	0.27	6.40	7.79	1.45
			0.03	0.04	1.65	2.93	0.60
		0.05	0.07	1.99	3.30	0.92	
			Mean ± SD	7.19 ± 4.14	12.8 ± 7.6		
Blood	11	0		NA ^d	NA		

^a Cro-dGuo peaks with MS area ratio equal to or over 0.05 are over LOQ. Cro-dGuo peaks with MS area ratio below 0.05 may be lower than LOQ, but still detectable (S/N greater than 3).

^b Not including those samples in which Cro-dGuo was not detected. Each value was from single measurement.

^c Determined by amount of dGuo released from enzymatic hydrolysis.

^d NA, not applicable.