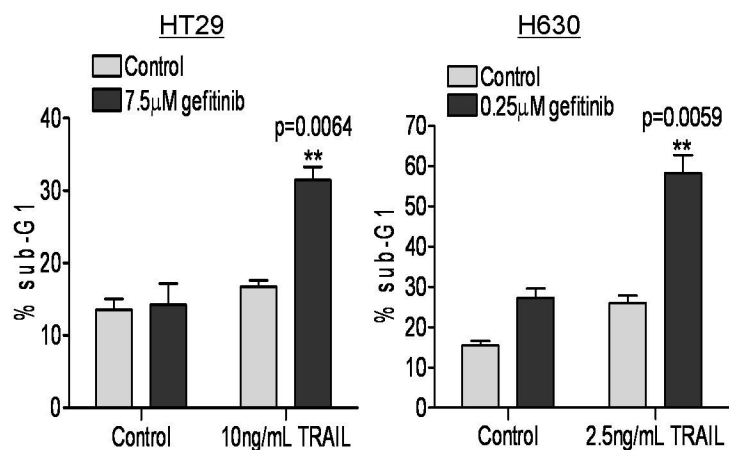
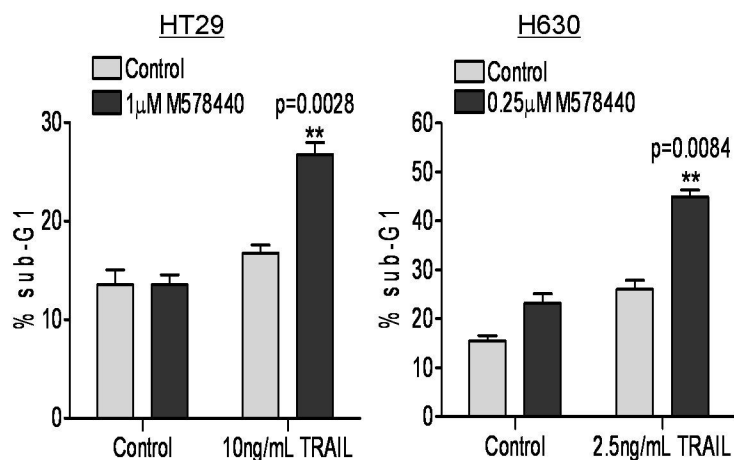


Supplementary Figure 1.

A.



B.



SFig. 1 Effect of gefitinib and M578440 on rhTRAIL-induced apoptosis in H630 and HT29 CRC cell lines. Determination of apoptosis in H630 and HT-29 CRC cells treated with the combination of gefitinib (A) or M578440 (B) with rhTRAIL. Cells were pre-incubated with gefitinib or M578440 for 24 hours followed by rhTRAIL for 24 hours. The cell cycle status of the cells was monitored by flow cytometry after propidium iodide staining. Percentages of cells in sub-G1 phase are given.