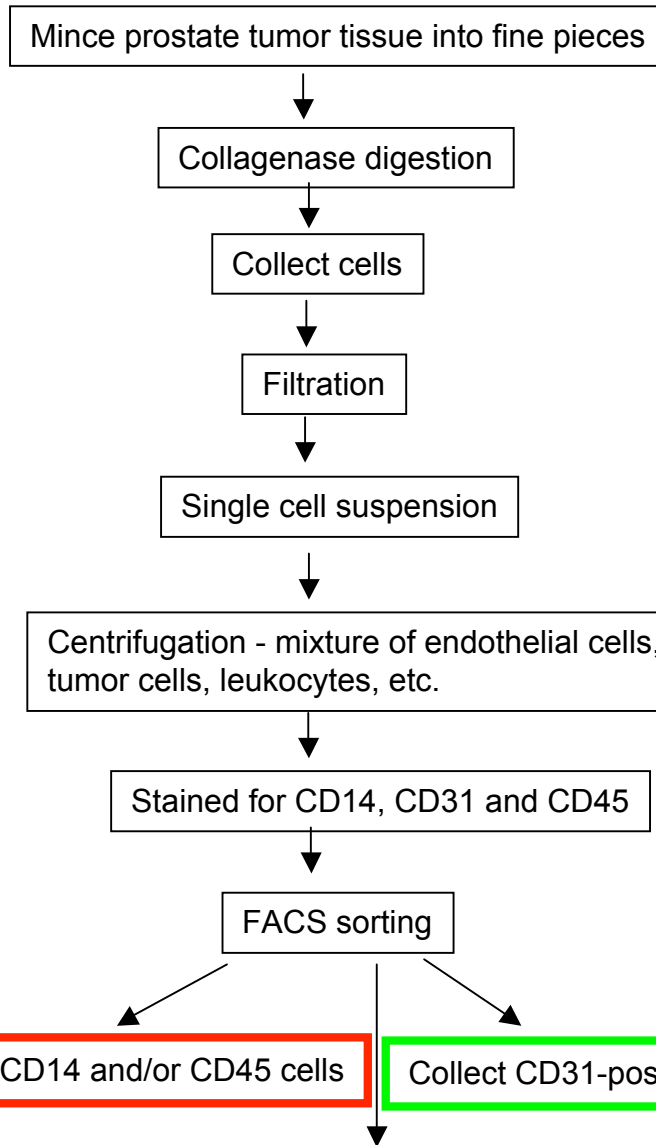
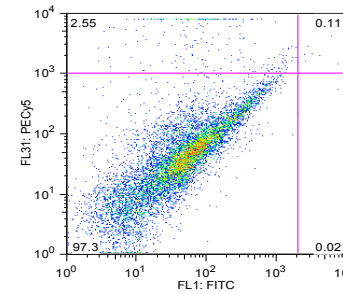


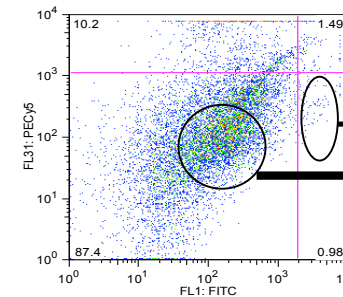
Jeewon Kim, Supplemental Figure 1



Cells stained with control antibodies



Cells stained with anti-cd45 Cy5PE and anti-CD31-FITC



Tumor endothelial cells
Tumor cells

Discard cells positive for CD14 and/or CD45 cells

Collect CD31-positive cells : "tumor endothelial cells"

Collect cells triple negative for CD14, CD31 and CD45 : "tumor epithelial cells"