

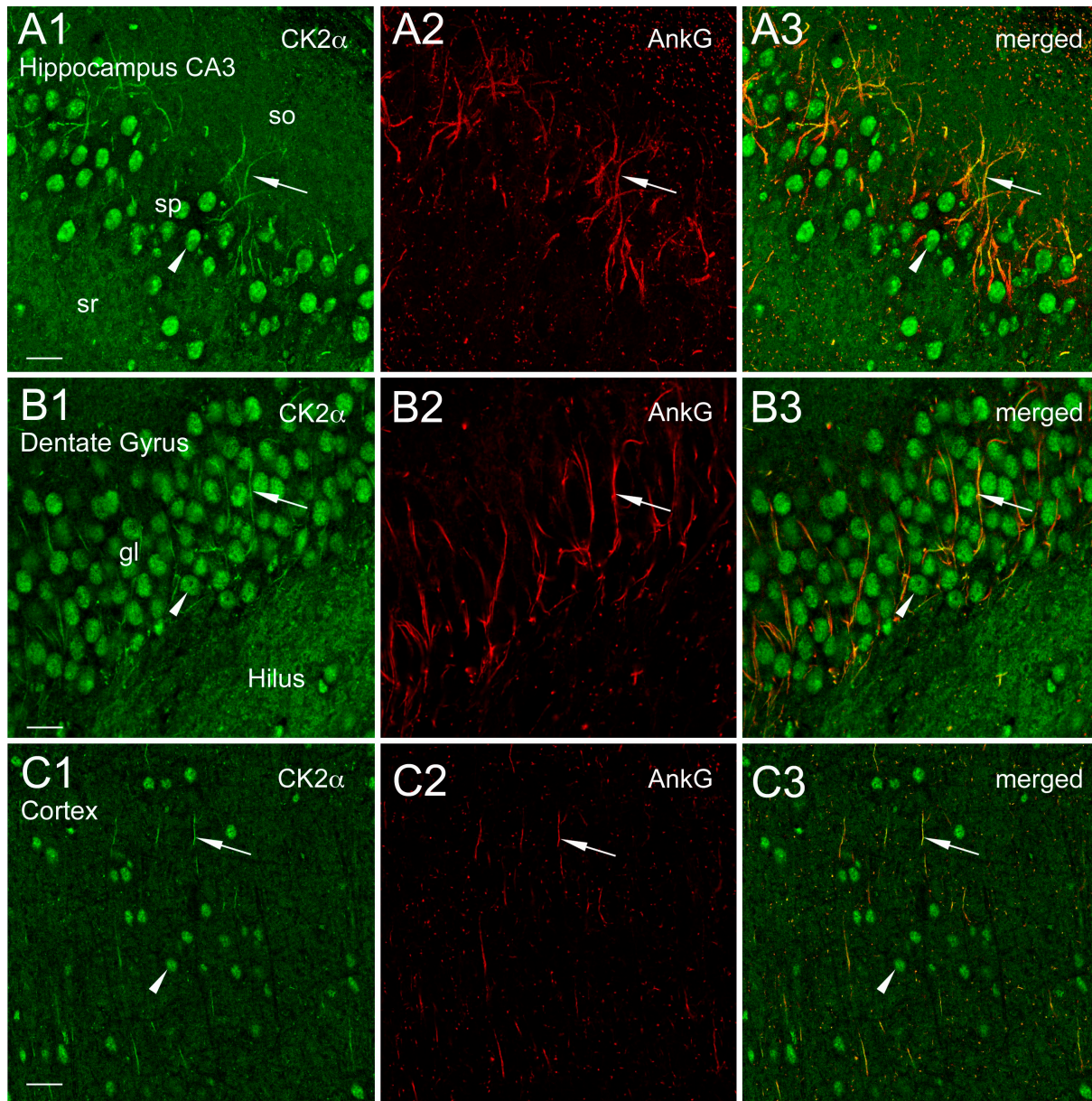
Brechet et al., <http://www.jcb.org/cgi/content/full/jcb.200805169/DC1>

Figure S1. **CK2 α is concentrated at axonal initial segments in different rat brain regions.** (A and B) Confocal views showing CK2 α immunoreactivity within initial segments (arrows) and nuclei (arrowhead) of neurons in the CA3 area of hippocampus (A1–A3), dentate gyrus (B1–B3), and cortex (layers 4–6, C1–C3). Note that diffuse and light CK2 α labeling is visible throughout the neuropil. gl, granular layer; so, stratum; sp, stratum pyramidale; sr, stratum radiatum. Bars: (A) 10 μ m; (B) 26.8 μ m; (C) 11.37 μ m.