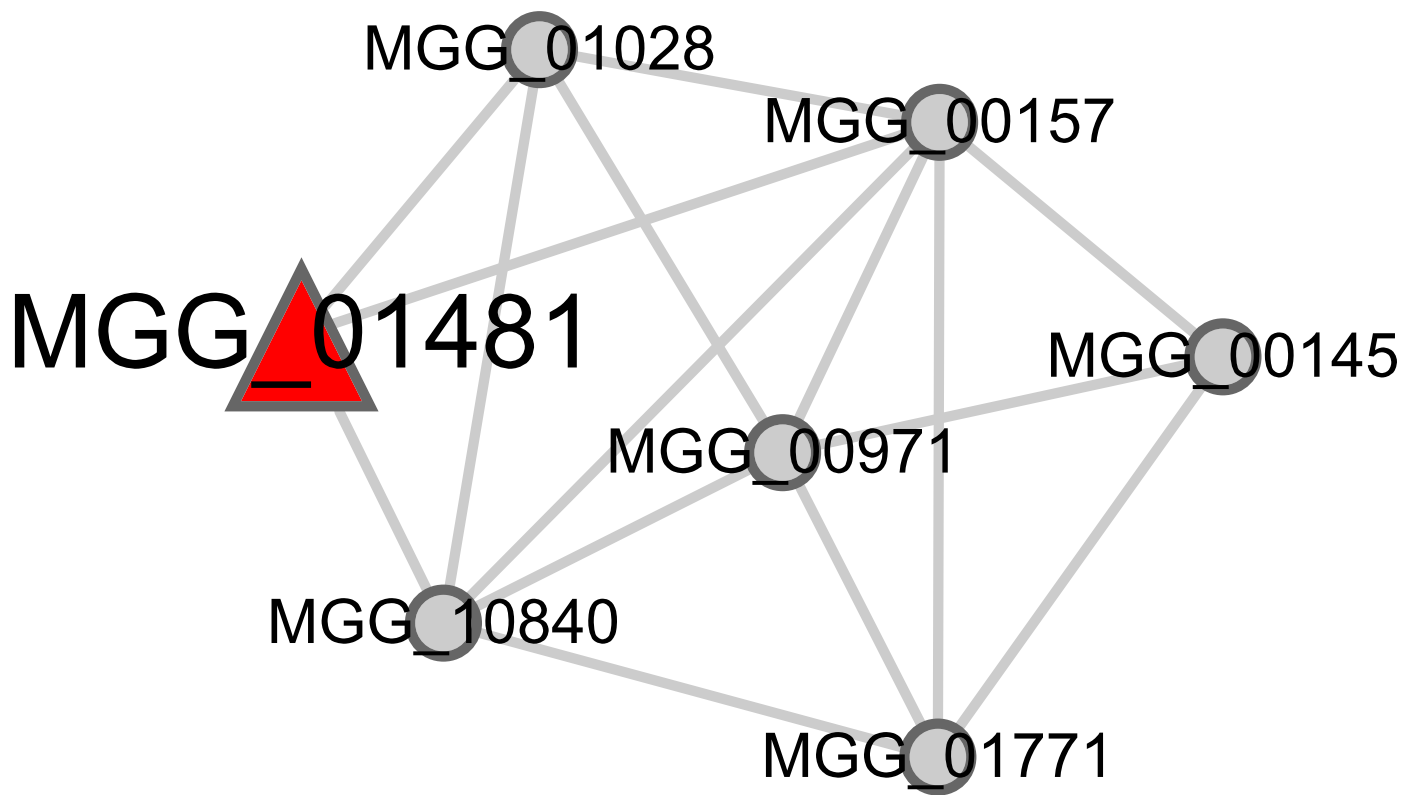


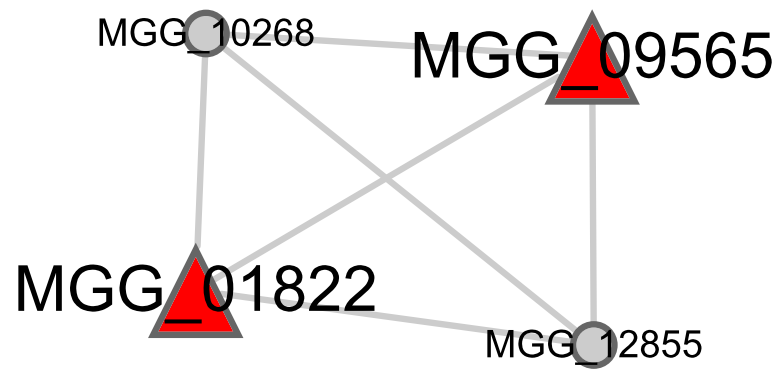
Additional file 3. Clusters or communities containing pathogenicity genes (proteins).

Those nodes represented by red triangles are pathogenicity genes. The description alongside each cluster is the enriched GO terms identified by Fisher exact test followed by FDR correction. The corresponding corrected p -value is also listed. This figure can be zoomed in to view the corresponding BROAD accession number of each node.

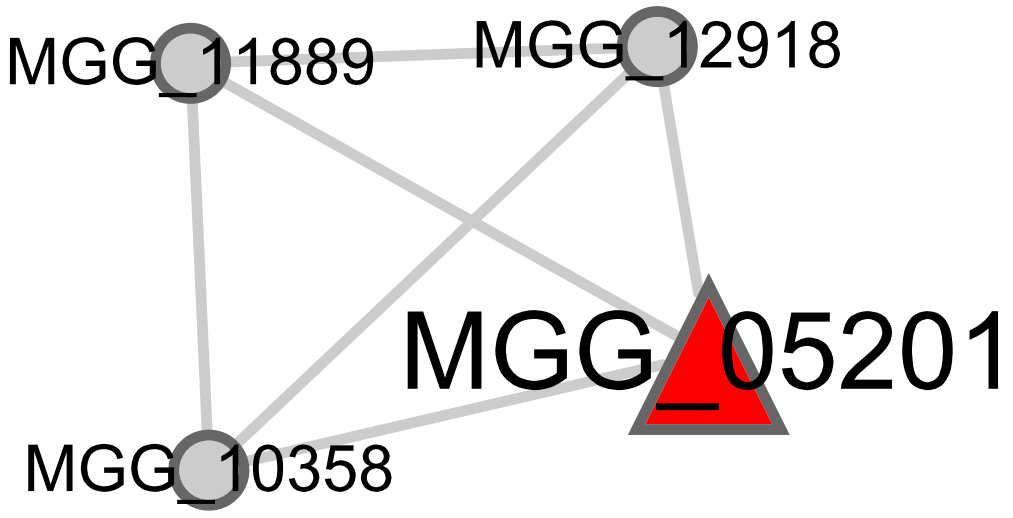
Protein transport
 1.47×10^{-2}



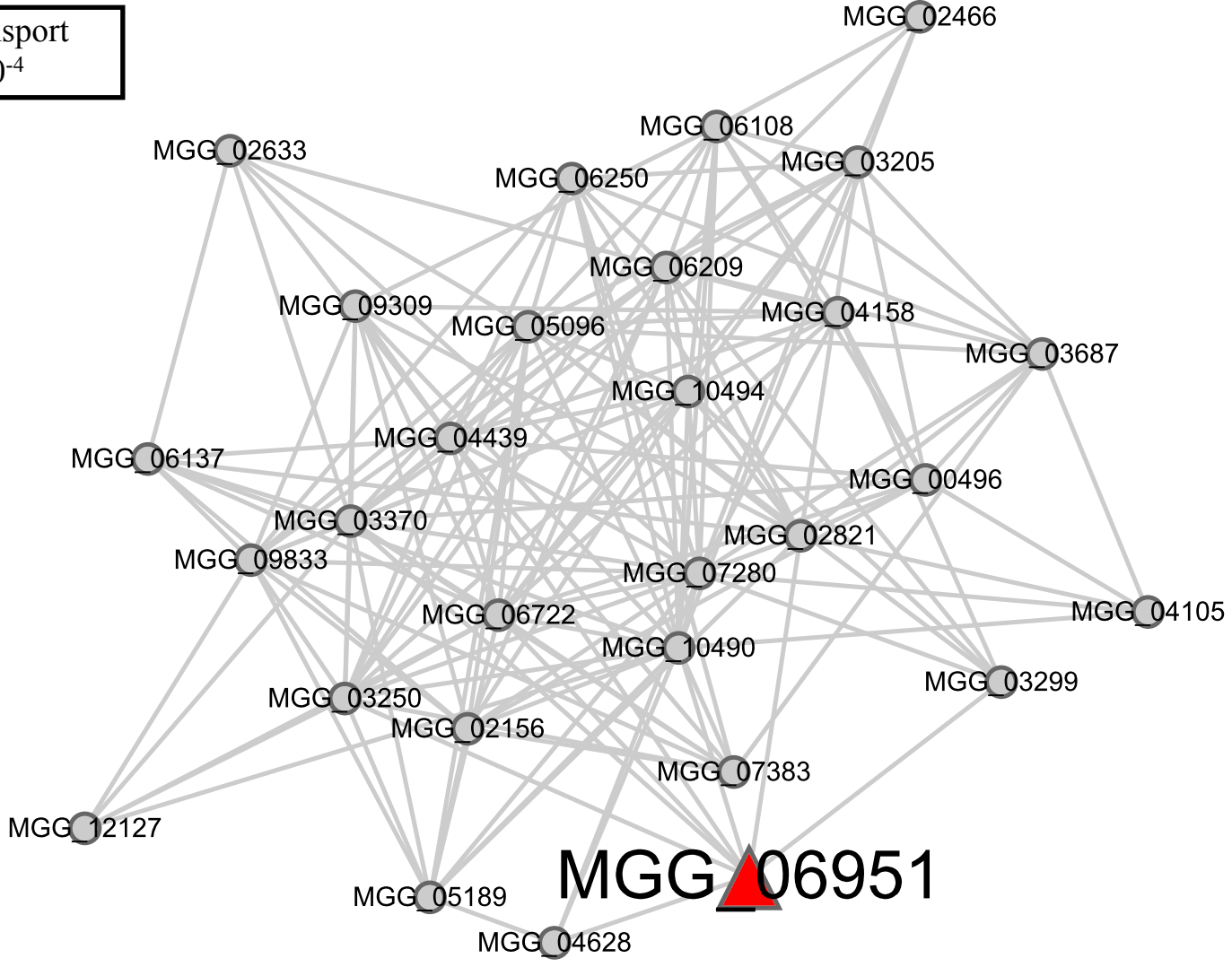
Phosphorus metabolic process
 2.58×10^{-7}



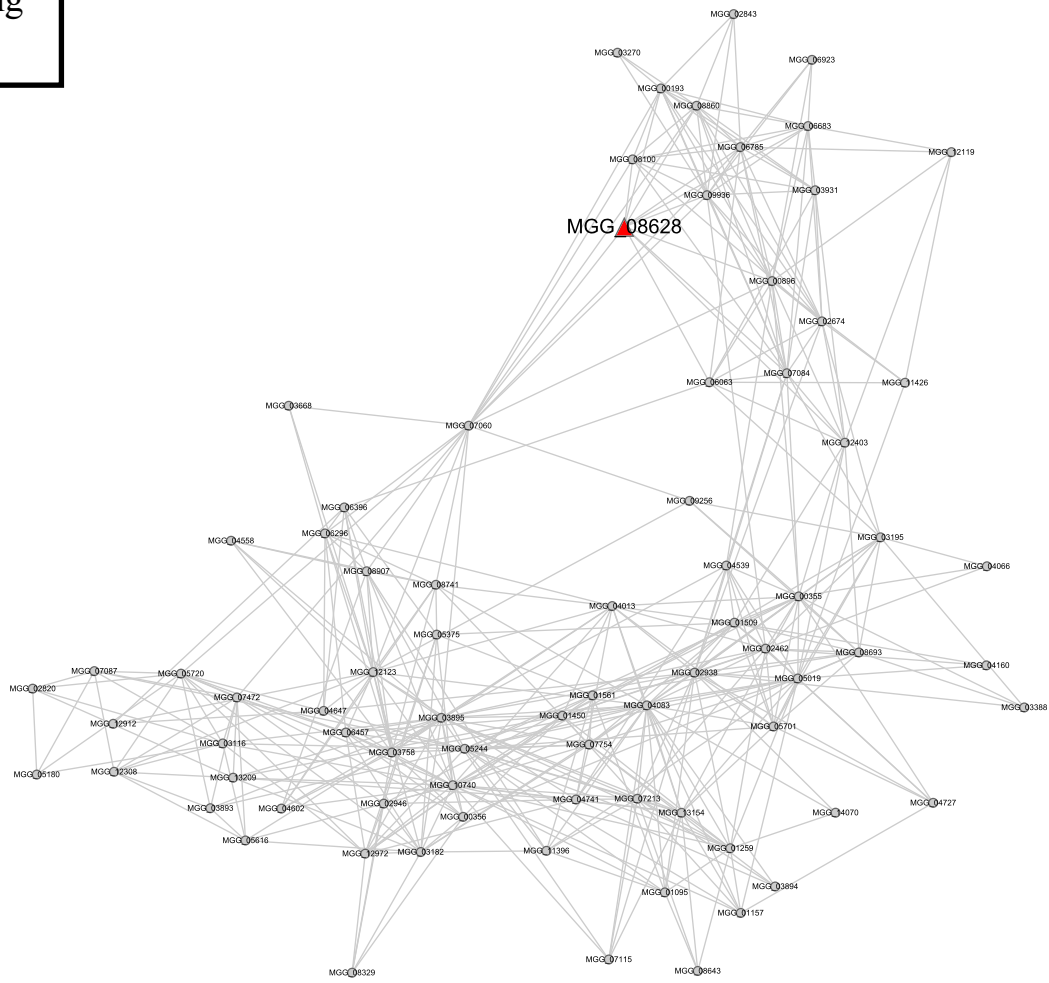
Neurological system process
 1.98×10^{-3}



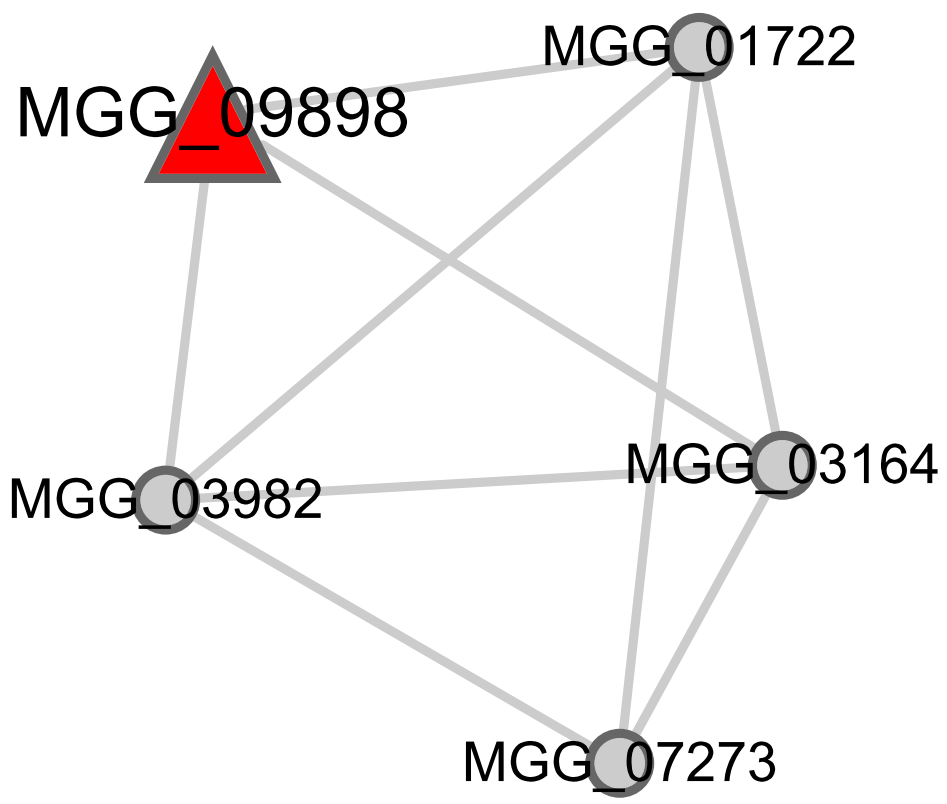
Ion transport
 7.83×10^{-4}



RNA processing
 3.15×10^{-29}



Symbiosis, encompassing mutualism through parasitism
 1.75×10^{-2}



Chromatin silencing
 7.82×10^{-3}

