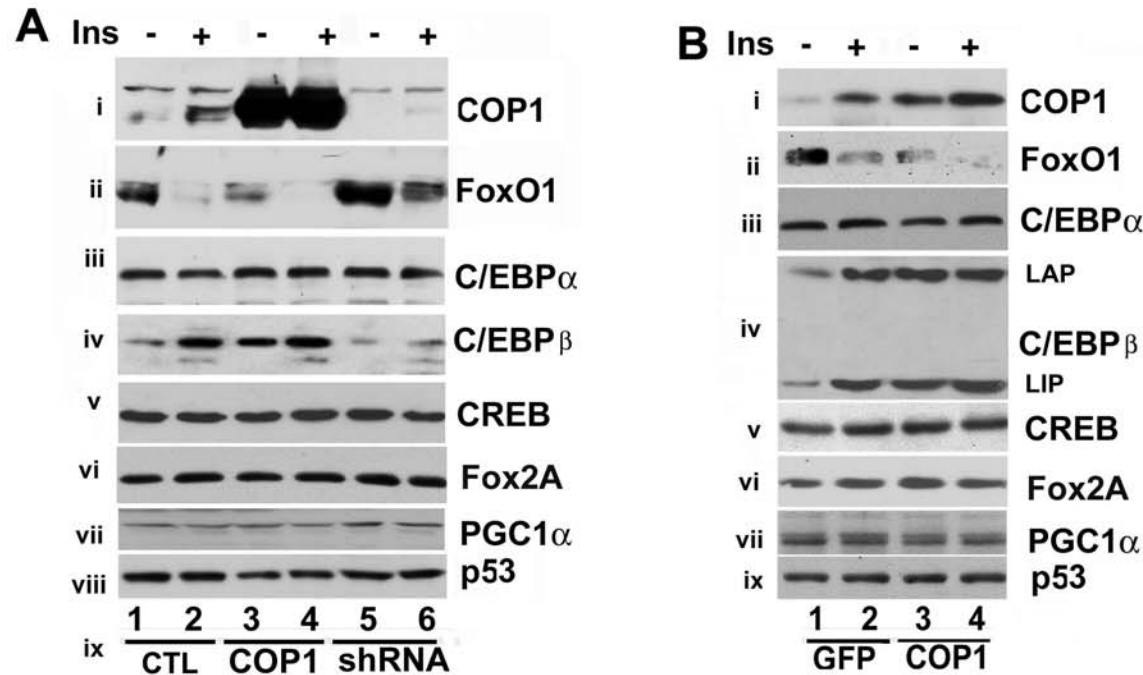
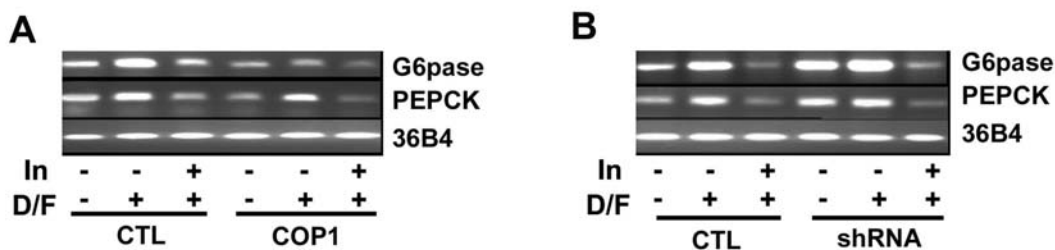


Supplementary Figure 1



Supplementary Figure 1 A. COP1 suppresses FoxO1 protein expression in Fao hepatoma cells. Fao cells were transduced with GFP (-), COP1 (WT) and COP1 shRNA adenoviruses, respectively. 24 hours post-transduction, the cells were serum-deprived for overnight followed by 4 hours of 100nM insulin treatment. Total cell lysates were prepared for western blot with anti-COP1 (i), anti-FoxO1 (ii) anti C/EBP α (iii), anti-C/EBP β (iv), anti-CREB (v) anti-FoxA2 (vi), anti-PGC-1 α (vii) and anti-p53 (viii) antibodies, respectively. **B.** The experiments were carried essentially as in A except pMigR-1 retroviruses were used. LAP: Liver-Enriched activating protein. LIP: Liver inhibitory protein.

Supplementary Figure 2



Supplementary Figure 2. Modulation of G6pase and PEPCK gene expression. Fao cells were infected with GFP (Control:CTL), COP1 or (COP1) COP1-shRNA (shRNA) expressing adenoviruses. 30 hrs post-infection, the cells were serum-starved overnight followed by 4 hrs of treatment with either DMSO, Dexamethasone (D) (0.5uM)/Forskolin (F) (2.5uM) and Dexamethasone (0.5uM) / Forskolin (2.5uM)/ insulin (100nM) (In), respectively. Total RNA was prepared from cells using RNeasy kit (Qiagen Inc. Valencia, CA), according to the manufacturer's instructions. RT-PCR reactions were carried out using a kit (Ambion, Austin TX) according to the manufacturer's instructions. The primers used for PCR were: PEPCK: forward: 5'-TGGTCTGGACTTCTTGACAAG-3', reverse: 5'-ACCGTCTTGCTTTTCGATCCTGG-3'. G6Pase: forward: 5'-TGTCTTG GTGTCTG TGATCGCTG-3', reverse: 5'-AA GTGAGCC GCAAGGTAGATCC-3'. 36B4, forward: 5-ATGATTATCCAAAATG CTTTATTG-3 and reverse 5-AACAGC AT ATCCCGAATCTCA-3. COP1: forward: 5'-AGAATACAGCCAACCTCCAG-3 and reverse: 5'-TCCACTGCATCC TGGATGAC-3'. The PCR cycles are, 94oC, 45sec, 54oC, 30sec, and 72oC 45sec for 24 cycles. PCR products were visualized by electrophoresis on 2% agarose gels containing ethidium bromide.