

SUPPLEMENTARY MATERIAL

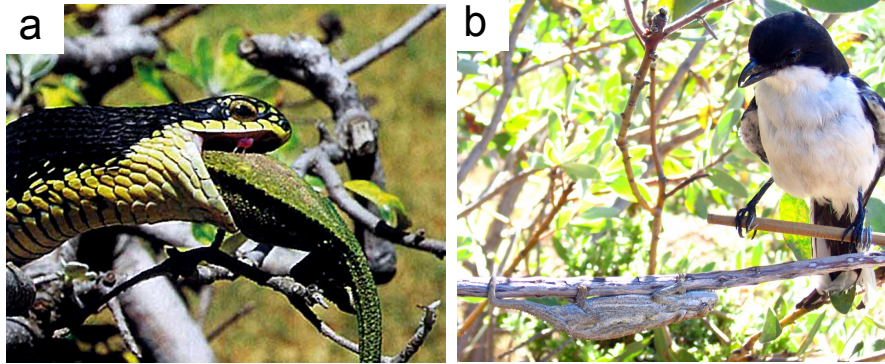


Figure S1.

Chameleon predators a) the boomslang is a major predator of dwarf chameleons (photo depicts a boomslang eating a male Cape dwarf chameleon, *Bradypodion pumilum*. Photo courtesy of William R. Branch, Bayworld, Port Elisabeth, South Africa); b) the stuffed fiscal shrike used in experiments elicits the typical anti-predator behavior of dorso-lateral flattening and flipping to the opposite side of the branch. The chameleons show background matching rather than other forms of camouflage such as disruptive camouflage.



Figure S2.

An adult male *Bradypodion taeniabronchum* camouflaged via background matching.

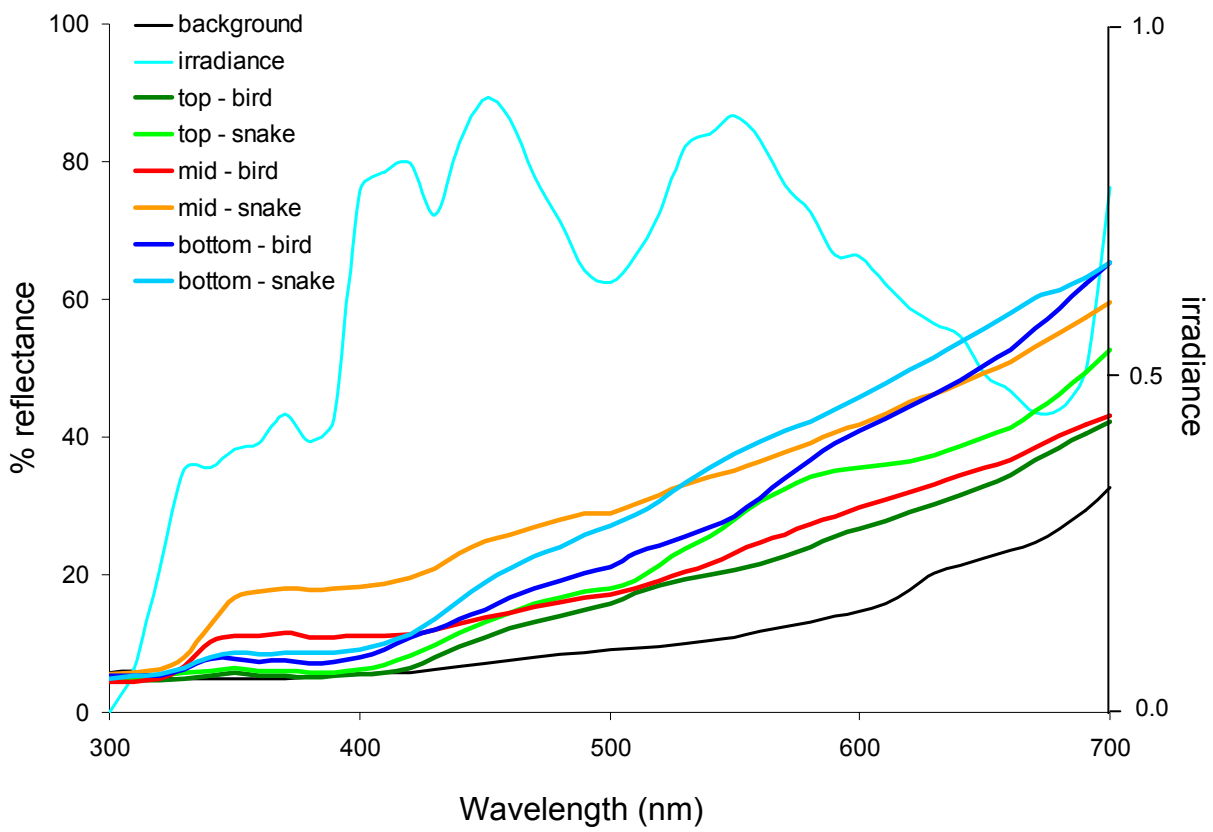


Figure S3.

Median reflectance of predator response colours (top = top flank, mid = mid flank, bottom = bottom flank) and background as well as irradiance (right axis).