

### **Supplemental Figure legend 1**

**Figure 1** GDNF activates Akt in IM-PEN similar to primary enteric neuronal cultures.

Cell lysates obtained from IM-PEN were treated with vehicle or GDNF for 30 min and

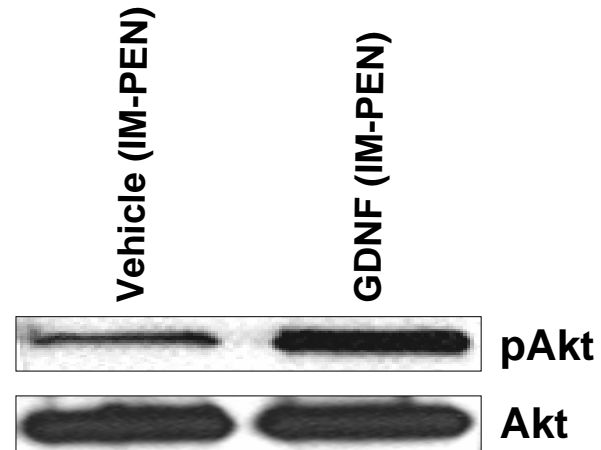
Western blot was performed. GDNF significantly increased the phosphorylation of Akt

compared to vehicle similar to the primary enteric neurons. Total Akt was used as a

loading control. Results are ratio (pAkt/Akt)  $\pm$  S.E., n=3, \*\*\* = p<0.001.

# Supplemental Figure 1

**a**



**b**

