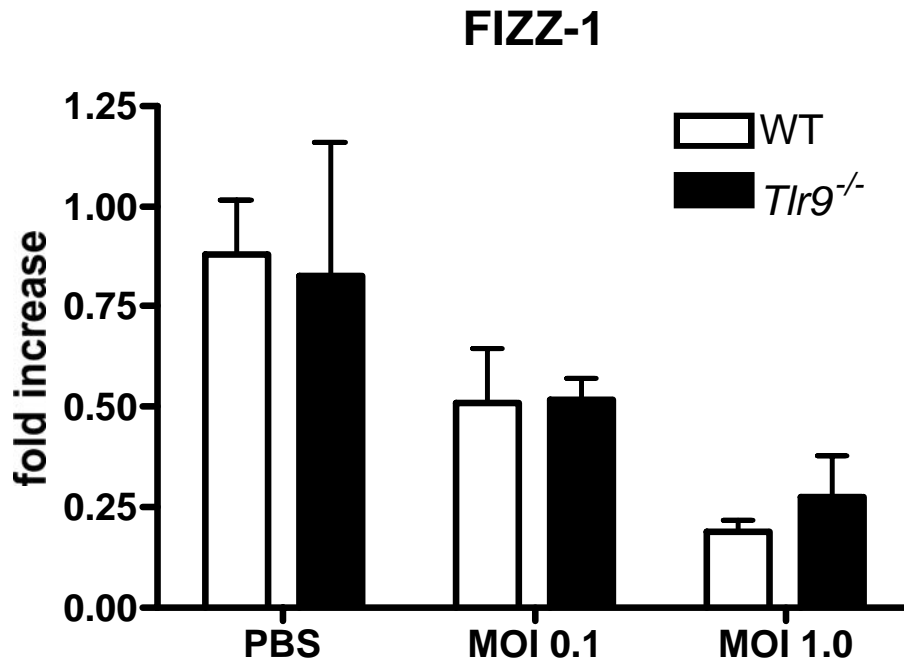
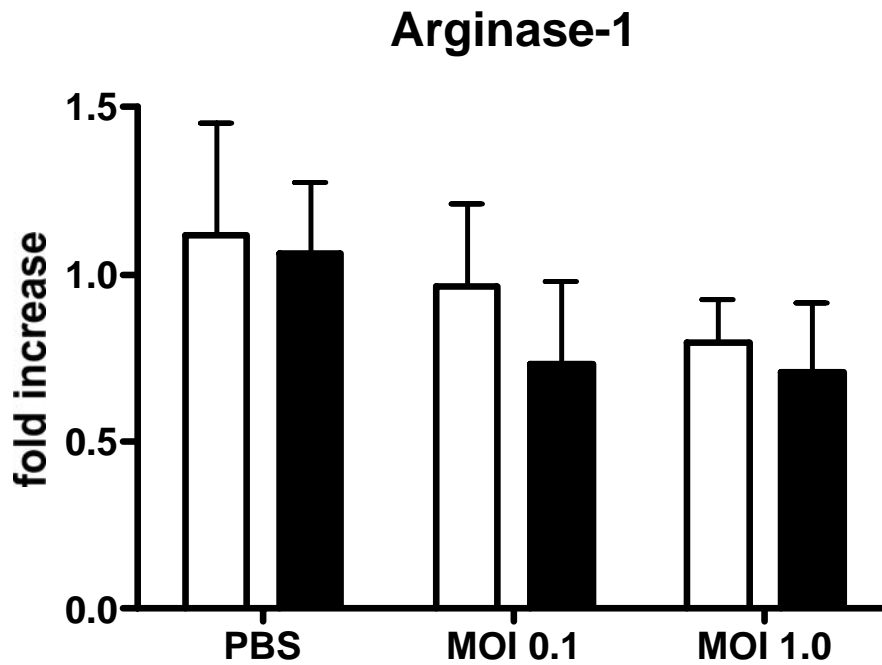


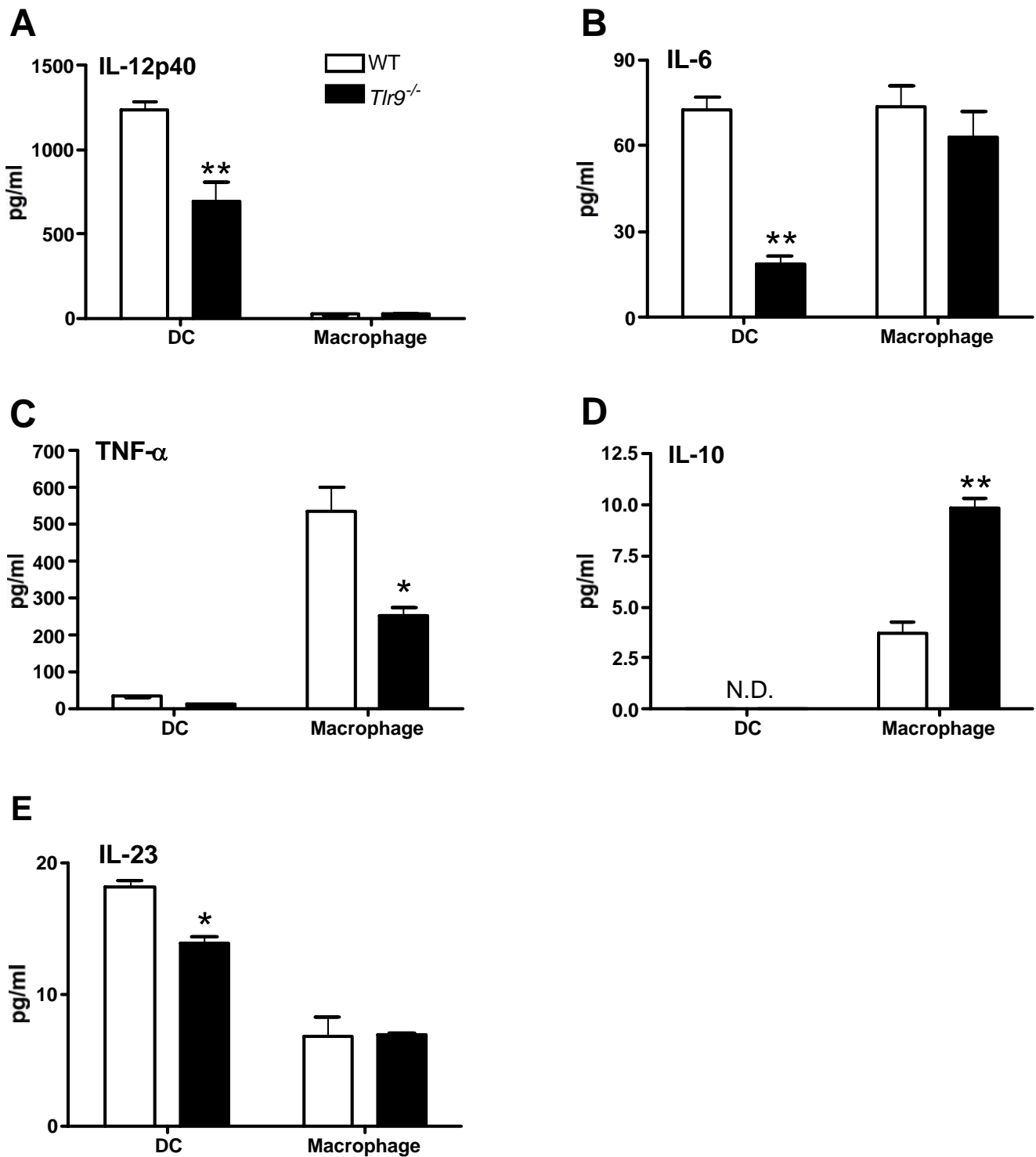
**Figure S1. Impaired Th17-related cytokine protein level in *Tlr9*<sup>-/-</sup> mice during granuloma formation.**

Protein levels of IL-6 (A), IL-23 (B), TGF-β (C), and TNF-α (D) were measured in whole lungs using a luminex system or ELISA assay. \* $P < 0.05$ ; \*\* $P < 0.02$ . Data shown are the mean  $\pm$  SEM and are from a representative experiment of four independent experiments. Each time point had at least 4-6 mice per group.

**A****B**

**Figure S2. BM-derived macrophages from both WT and *Tlr9*<sup>-/-</sup> mice did not show an alternatively-activated macrophage phenotype.**

BM-derived macrophages from both WT and *Tlr9*<sup>-/-</sup> mice were stimulated with BCG (MOI=0, 0.1, or 1.0) for 6 h, and then quantitative real-time PCR was performed to assess mRNA expression for FIZZ-1 (A) and Arginase-1 (B). No significant differences were detected in this study.



**Figure S3. BM-derived DCs and BM-derived macrophages after BCG stimulation have different cytokine phenotypes.**

BM-derived DCs and BM-derived macrophages from WT or *Tlr9*<sup>-/-</sup> mice were stimulated with BCG (MOI = 1) for 24 hours and cytokine levels in cell supernatants were measured using bioplex proteomic assays. IL-12p40 (A), IL-6 (B), TNF-α (C), IL-10 (D), and IL-23 (E) production after BCG stimulation in BM-derived DCs and macrophages from WT or *Tlr9*<sup>-/-</sup> mice. \*\**P* < 0.01 \**P* < 0.05 compared to WT mice. Error bars represent mean ± SEM for four mice per group. Experiments were performed three times with similar results. N.D. = not detected.