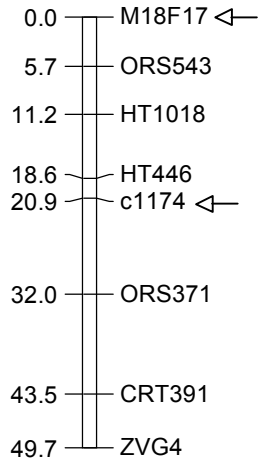
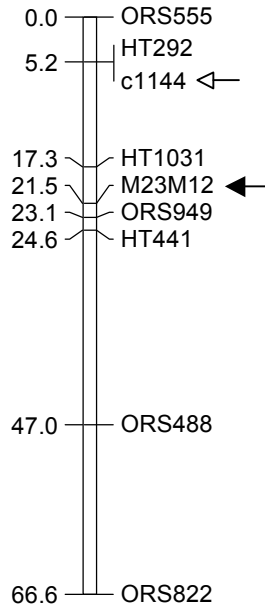


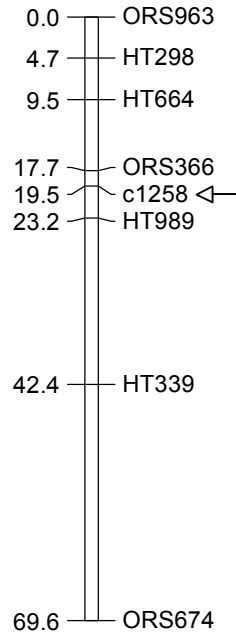
1



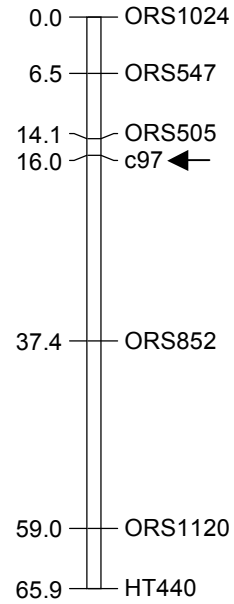
3



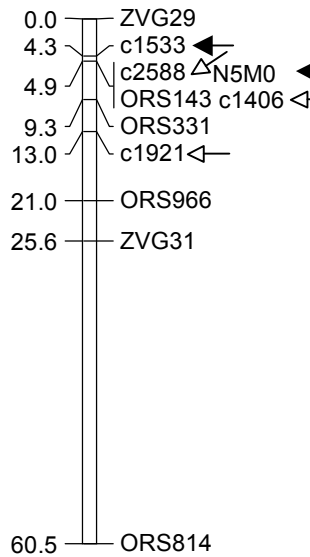
4



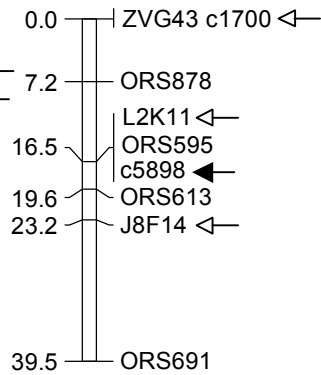
5



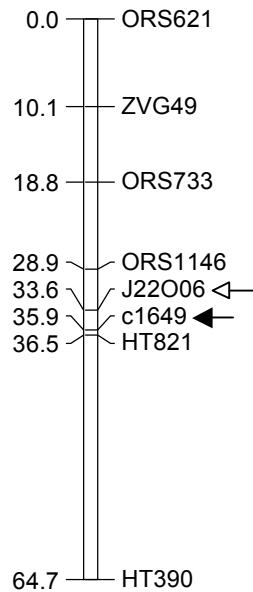
7

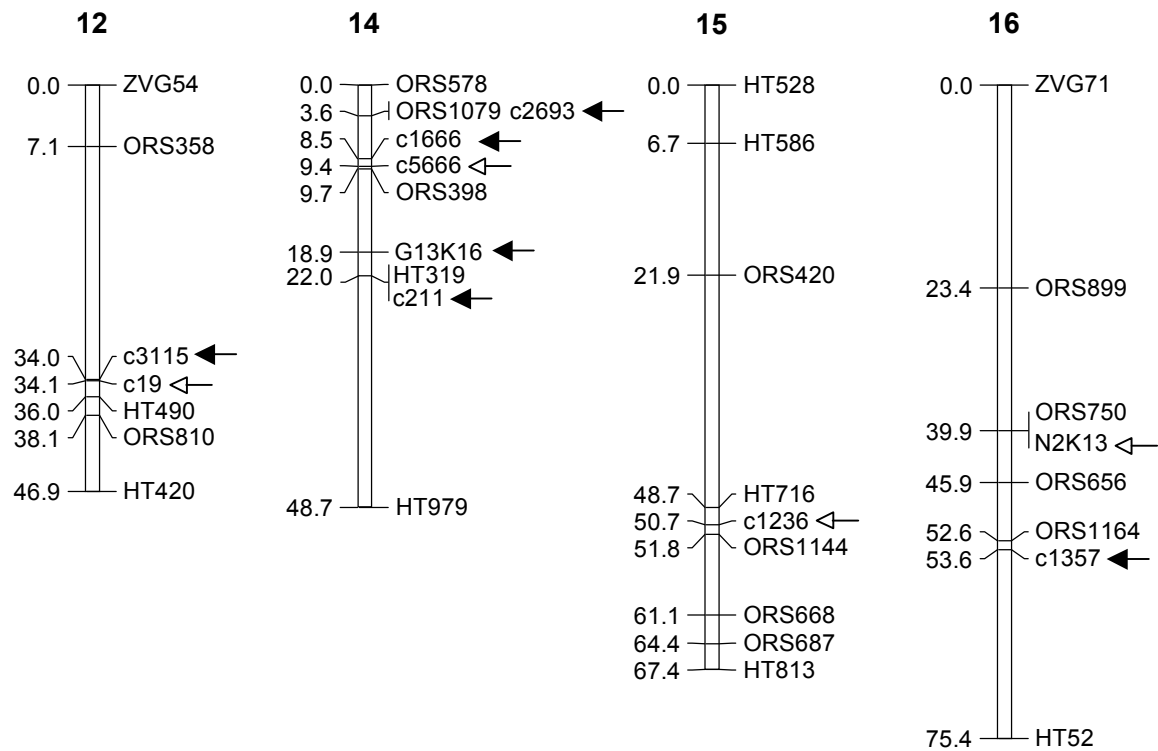


10



11





Supplemental figure 1 - Genetic map positions of 12 domestication-related loci (solid arrows) and 15 improvement-related loci (open arrows) in a wild x improved sunflower RIL population.

Supplemental Table 1 - Primers sequences

Genome Walking		walk primer 1	walk primer 2	
c1700	5' walk	CTTGTTCAAGCGTCACAAAAAG	TAACCGTCTTCAGAGCACAATC	
c2150	5' walk	AATGGTCAAAAACGCAGAGATT	CCGTGTATCAAAGCCCTAAGAG	
c1236	5' walk	TCCTCAGACATTATTGTCAACAGAG	CACTCTAATTCTACCACCCTCCA	
c1236	5' walk 2	GCTCGATCTGACTCGAAGTTTT	AACTGGCTCGTTTAAGTTCGAG	
c1921	5' walk	GGTATAGCACAAACCCAATACG	GGGTAGAACGGCATAGGAAAG	
J22006	5' walk	AAATGAAGAGTGCAAGGACCAT	AGAATAGGCCCAGAACACCATA	
J22006	3' walk	ATGGTCCTTGCACCTTTCATTT	TATGGTGTCTGGGCCTATTCT	
H4B03	5' walk	AAAGTGGACGTGTTGTGTTGAC	TTGTCAAAAATGAACTCGGTTG	
PCR-RFLP		Enzyme	Fwd Primer	Rev Primer
c1666		<i>SspI</i>	as SSR	as SSR
c1357		<i>AluI</i>	AAAGAACCGTCTTCCAAATGAA	ACAATCTGCCTTCCAACATTCT
c2963		<i>DdeI</i>	as SSR	as SSR
c1700		<i>AluI</i>	GCCAGCCCAAATTACTGAATTA	CCCCAAAAACACAATCAAAAAT
c1774		<i>PstI</i>	ATTCTGCTAAAAAGCCACCAG	ACGGAATAACATATGGCAAAGC
c1921		<i>PstI</i>	CGAGAAACCCGTTGATAAAGAA	CTTTGTCTTCGCTTTTGGATT
J22006		<i>TaqI</i>	CGATGGTTTTTCATATGGGTTTT	AAAGAATTCTCCTGCAAATGGA
SSCP		Fwd Primer	Rev Primer	
G13K16		ACTGCCATTCCATTTGTCAGG	AATCATGAAACGCACGTAAAAA	
c1236		as SSR	GGCTCTATGGTTCGACTCGTAT	
Sequencing		Timing	Fwd Primer	Rev Primer
c1666	domestication	GGAGCCGGTTTCTGAATATG	GGTGCCTGTGTTTCTTCCTC	
c4973	domestication	ACSGTSAGGACAAGAACAA	GCCACTTTGTTCAAGTTTAGGG	
c5898	domestication	TGCTTCAATGGAGTTTAATTCG	CACAAGAACATGAGGATAAAGTGC	
c1236	improvement	TGGACAAAATAAGGTTTGTGG	TCCTCAGACATTATTGTCAACAGAG	
c1406	improvement	ACTCAATTGGAATACCCGAATG	TCGTTTTGATCTAGGAGGTGTG	
c1921	improvement	CTGACCGAGAAACCCGTTGATA	CTTTGTCTTCGCTTTTGGATT	
c2016	(neutral)	GGTTGGCGGAGTTTGTAAAG	GTCATCCCCTTTTTCTTCC	
c1351	(neutral)	CCTTCATGGTACACTGCTGGT	CAAACACCACTTGCCAAAAA	
c1111	(neutral)	CGCAGATGAAACACAGGAAACT	AATATAAATGGACCTCCGCTTGA	
c2307	(neutral)	TGCTCTGATGTTTCGTCCAC	TCAAGCCTTTACACAGTTTAGACA	
c25	(neutral)	GCATATCCTTACACGGGGAAA	CAAATAACAGATGTTTTTGCCATT	
c5369	(neutral)	GAACCGTTGTCCGTCTTTGT	AAAGCAACAGAAGATAGATTTCCA	
c5456	(neutral)	ATGGATGGCCAGAAGATCAC	AATATGCCCAAAGGATGCAG	

Supplemental Table 2 - Individuals employed in the sequence analysis

Name	Status	Collection Locale	Plant ID
Ames 14400	Wild	Arizona	PI 649851
Ann-1114	Wild	Arkansas	PI 613727
A-1473	Wild	Kansas	PI 413027
A-1572	Wild	Mexico-Mayo	PI 413123
A-1455	Wild	Missouri	PI 413011
Ames 23238	Wild	Ohio	PI 649853
Ames 23940	Wild	South Dakota	PI 649854
Ann-646	Wild	Tennessee	PI 435552
Havasupai	Primitive		PI 369358
Hidatsa	Primitive		PI 600721
Hopi	Primitive		PI 432504
Maiz Negro	Primitive		PI 650761
Mandan	Primitive		PI 600717
Seneca	Primitive		PI 369360
RHA280	Improved		PI 552943
RHA801	Improved		PI 599768
cmsHA89	Improved		PI 650572
Mennonite	Improved		PI 650650
Pervenets	Improved		PI 483077
VNIIMK 1646	Improved		PI 650385
<i>H. petiolaris</i>	Outgroup	Texas	PI 435829