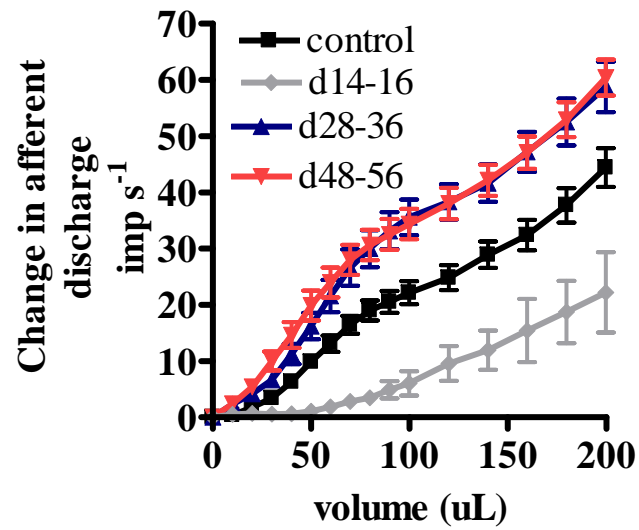
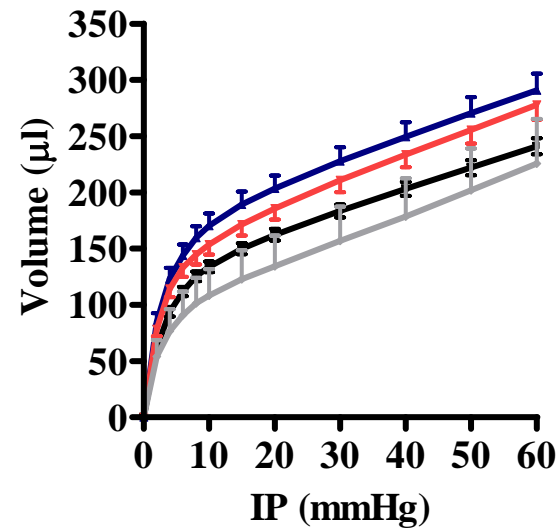


Supplementary figure

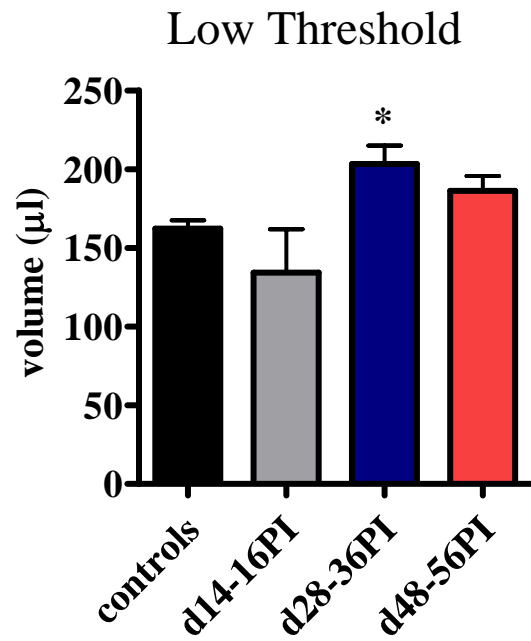
A)



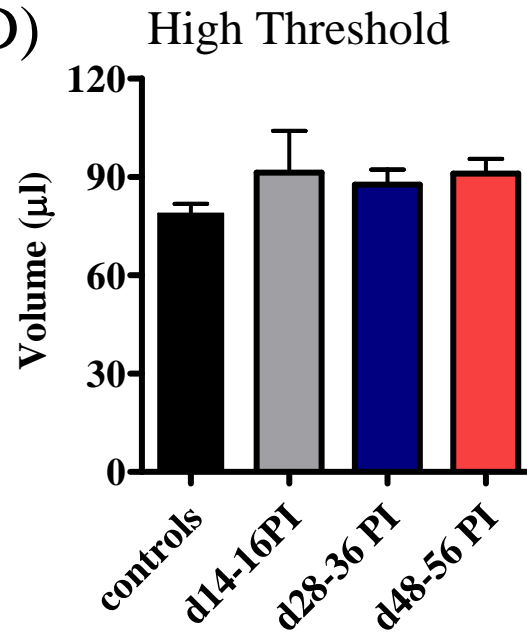
B)



C)



D)



Supplementary Figure.

A). Volume-response profiles of multi-unit activity from 43 control and 54 post-infected preparations. The volume-response profile was significantly attenuated at d14-16 PI compared to controls ($p < 0.0001$, $n=8$), but was significantly augmented at d28-36 PI, ($p < 0.0001$, $n=24$) and at d48-56 PI ($p < 0.0001$, $n=22$). Significant differences from control were detected above 60 μl for all three time points analysed ($p \leq 0.05$ Bonferroni *post-hoc* analysis). B). Pressure-volume profiles showing that the compliance of jejunal segments is altered post infection. C) and D) Comparison of the distension volumes required to obtain low threshold (0-20 mmHg) and high threshold (20-60 mmHg) distension levels in control and PI preparations. There was a significant increase in the volume required to attain LT distension levels at d28-36 PI only (*, $p < 0.01$; One-way ANOVA). However, there is no significant difference in the intraluminal volumes required to attain HT distension levels.