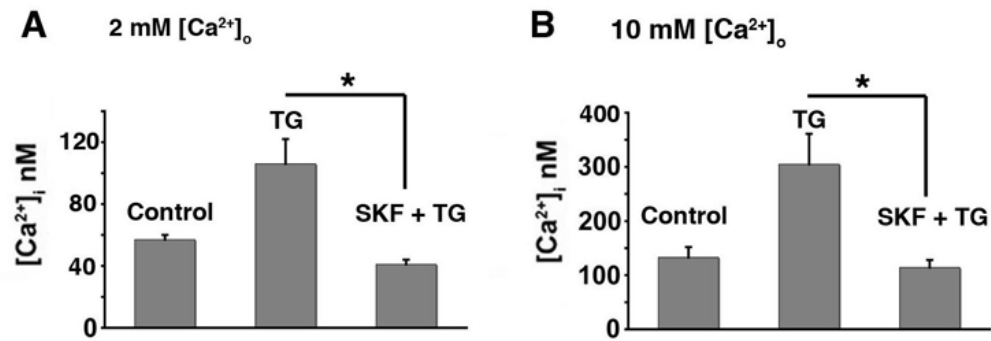


Supplemental Fig. 1



Thapsigargin-induced elevation of baseline $[Ca^{2+}]_i$ is blocked by SKF 96365. (A) Rod IS baseline $[Ca^{2+}]_i$ in 2 mM $[Ca^{2+}]_o$ is elevated following superfusion with 1 μ M thapsigargin. The elevation is blocked by co-application of 5 μ M SKF 96365 (n=4, $P < 0.05$) (B) Same experiment in the presence of 10 mM $[Ca^{2+}]_o$ (n=4, $P < 0.05$).