

Human Serum Antibody Response against *Streptococcus mutans* Antigens

MICHAEL J. PUCCI, JOHN G. TEW, AND FRANCIS L. MACRINA*

Department of Microbiology and Immunology, Virginia Commonwealth University, Richmond, Virginia 23298

Received 3 September 1985/Accepted 8 November 1985

Antigens from *Streptococcus mutans* were examined to identify specific polypeptides that may have stimulated antibody responses and possibly play some role in caries immunity. A group of 10 adult human subjects was screened for serum antibodies reactive with antigens from *S. mutans*. Extracellular and cellular protein preparations from *S. mutans* LM7 (Bratthall serotype e) and V403 (biotype c) were subjected to sodium dodecyl sulfate-polyacrylamide gel electrophoresis followed by Western electrophoretic transfer and immunoblotting analysis. Antibodies reactive with polypeptides ranging from 34 to 400 kilodaltons in apparent molecular mass were detected by these means. Radioimmunoassay competition experiments revealed that the cellular and extracellular antigens did not compete with each other for serum antibodies. Preabsorption of sera with extracellular proteins from other oral streptococcal species prior to immunoblotting indicated that the antigens unique to *S. mutans* have molecular masses greater than 100 kilodaltons, and each individual produced antibodies against different antigens of high molecular mass. Examination of sera from young children also indicated heterogeneous responses against *S. mutans* LM7 antigens.

Dental caries continues to be a major health problem in the world today (8). Animal models have implicated *Streptococcus mutans* as the primary etiological agent (5, 6, 11). Since more than 99% of individuals in western nations develop caries, innate immune mechanisms are apparently ineffective. Though dental caries is prevalent in children, most adult humans have low incidences of dental caries. This suggests that some type of immunity might be acquired by early adulthood. Significant antibody titers in saliva and serum are present in most adult humans and have been shown to be induced by oral immunization with *S. mutans* (7, 17). Animal model systems have been used extensively to investigate the immunogenicity of *S. mutans*. For example, oral immunization with killed *S. mutans* has been shown to induce secretory immunoglobulin A (IgA) and caries immunity in rodents (18). Serum antibodies (IgG, IgM, and IgA classes) have also been demonstrated in response to whole cells, crude cell wall preparations, and extracellular proteins including glucosyltransferase in monkeys and rats (14, 21, 24). In some instances, these elevations in antibody titers have been associated with effective immunity (19, 23). Specific surface antigens which have been associated with immunity in animals include the *spaA* protein (R. Curtiss III, R. Goldschmidt, J. Barret, W. Jacobs, R. Pastian, M. Lyons, S. M. Michalek, and J. Mestecky, in *S. Hamada, L. Menaker, H. Kiyono, J. R. McGhee, and S. M. Michalek, ed., Cellular, Molecular, and Clinical Aspects of Streptococcus mutans*, in press) and antigen A (R. R. B. Russell, E. Abdulla, M. L. Gilpin, and K. Smith, in Hamada et al., ed., *Cellular, Molecular, and Clinical Aspects of Streptococcus mutans*, in press).

The purpose of this study was to identify specific antigens from *S. mutans* which have stimulated a potentially protective antibody response in the sera of an adult human population. We were able to detect antibodies to cellular and extracellular antigens of *S. mutans* by Western blot analyses. These antigens were checked for shared immunodeterminants with extracellular proteins from other

oral streptococci. We contrasted early antibody responses in humans by using the sera of young children to compare with profiles of adults. The results described here indicate heterogeneity in the immune responses of both young children and adults.

MATERIALS AND METHODS

Antisera. Human sera were obtained by venipuncture from nine adults with a normal array of carious lesions and from one caries-free adult. Two adult New Zealand White rabbits were inoculated intramuscularly with 800 µg of *S. mutans* LM7 extracellular protein emulsified in an equal volume of Freund complete adjuvant. The rabbits were boosted 1 month later with the same amount of protein without adjuvant and bled 2 weeks after the booster.

Bacterial strains and medium. *S. mutans* LM7 (Bratthall serotype e) and V403 (serotype c) and *S. sanguis* V288 have been previously described (20). *S. mitis* I18 and *S. salivarius* I1 were clinical isolates obtained from D. LeBlanc (9). *S. faecalis* JH2-2 was obtained from D. Clewell. Streptococci were grown in chemically defined FMC medium (25).

Preparation of streptococcal protein fractions. Streptococcal protein fractions were obtained as previously described (20). Strains were grown aerobically for 24 to 36 h at 37°C in 1 liter of chemically defined medium (25; glucose was the carbon source) supplemented with 10 mM sodium bicarbonate. Cells were harvested by centrifugation at 9,000 × g for 20 min in an Ivan Sorvall, Inc. (Norwalk, Conn.) GSA rotor. The washed cells were suspended in 10 ml of 10 mM sodium phosphate buffer (pH 6.5) and mechanically broken in a Bead-Beater (Biospec Products, Inc., Bartlesville, Okla.). This was followed by centrifugation of unbroken cells and cell debris at 300 × g and retention of the supernatants. These constituted the cellular fractions. The extracellular fractions consisted of ammonium sulfate (60% saturated) precipitations of the 1-liter culture supernatants at 4°C. The precipitates were suspended in 10 ml of 10 mM sodium phosphate buffer (pH 6.5) and dialyzed against the same buffer. Further concentration was achieved by lyophilization and suspension in 1 ml of sodium phosphate buffer. Protein

* Corresponding author.

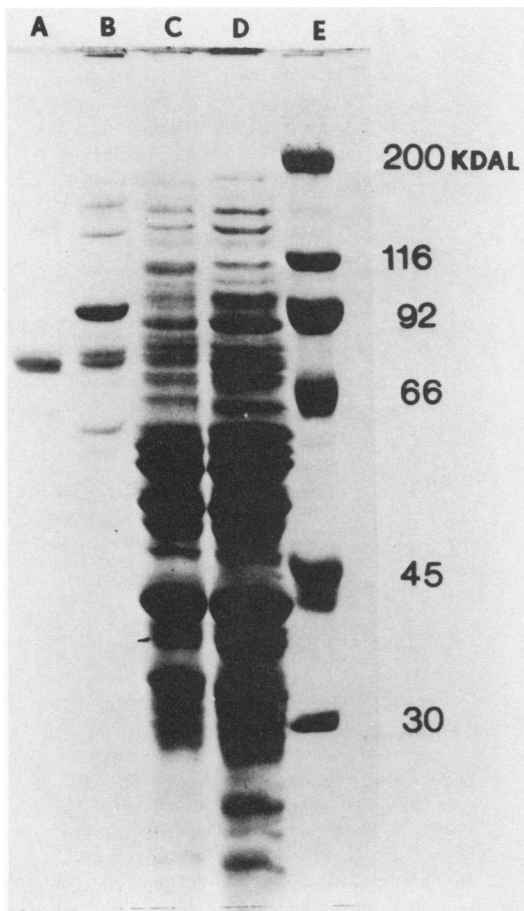


FIG. 1. *S. mutans* protein profiles. Proteins were subjected to SDS-PAGE with a 10% acrylamide slab gel and stained with Coomassie blue. Lanes: A, *S. mutans* V403 extracellular proteins; B, *S. mutans* LM7 extracellular proteins; C, *S. mutans* V403 cellular proteins; D, *S. mutans* LM7 cellular proteins; E, molecular mass markers. Intracellular protein lanes represent about 200 μ g of total protein, while extracellular protein lanes represent about 30 μ g of total protein.

was estimated by the method of Lowry et al. (15). Fractions were aliquoted and stored frozen at -20°C .

SDS-PAGE. Proteins were separated by sodium dodecyl sulfate (SDS)-polyacrylamide gel electrophoresis (PAGE) (12) on a 10% polyacrylamide slab gel with a 3% stacking gel and visualized by Coomassie blue staining. Proteins were boiled for 5 min in SDS sample buffer prior to electrophoresis. Prestained molecular mass standards were purchased from Bethesda Research Laboratories, Gaithersburg, Md.

Immunoblotting. Samples were run on SDS-PAGE gels as described above. Separated proteins were then electrophoretically transferred to nitrocellulose paper (28) overnight at 90 mA in a Transphor TE50 apparatus (Hoeffer Scientific Instruments, San Francisco, Calif.). After transfer, the nitrocellulose paper was preincubated in Tris-buffered saline (50 mM Tris hydrochloride, 150 mM NaCl [pH 7.5]) with 0.05% Tween 20 (TTBS) and containing 3% gelatin to block sites of nonspecific protein binding. After 1 h, the paper was transferred to a solution of TTBS containing either a 1:1,000 dilution of hyperimmune rabbit serum, a 1:1,000 dilution of preimmune rabbit serum, or a 1:100 dilution of human serum. Incubation proceeded at room temperature for 4 h.

After two washes with TTBS, the nitrocellulose paper was incubated with a 1:2,000 dilution of horseradish peroxidase-conjugated goat anti-rabbit immunoglobulin (Bio-Rad Laboratories, Richmond, Calif.) or horseradish peroxidase-conjugated goat anti-human antibody (Cooper Biomedical, Inc., Malvern, Pa.) in TTBS for 1 h. After a distilled water rinse and two TTBS washes, the paper was submerged in a color development solution consisting of 0.05% 4-chloro-1-naphthol and 0.015% hydrogen peroxide in Tris-buffered saline-methanol (5:1 [vol/vol]). Band molecular masses were estimated by comparison with prestained molecular standards (Bethesda).

Antigen competition experiments. A radioimmunoassay was used to detect and quantitate specific antibody as described previously (26). Antigen was diluted in coating buffer (0.1 M NaCO_3 [pH 9.6]) and then allowed to coat the wells of a microtiter plate. Each of the competing antigens was mixed with equivalent dilutions of human serum (1:800) and allowed to incubate overnight. The concentrations of the competing antigens are indicated on the abscissas of the plots. The antigen-antibody mixtures then were allowed to incubate in the microtiter wells containing the target antigens. After washing, ^{125}I -labeled goat anti-human IgG (F_c specific) was added at approximately 3×10^5 cpm per well and incubated overnight. Supernatants were aspirated and, after extensive washing, individual wells were counted in an LKB Instruments, Inc. (Rockville, Md.) 1282 Compugamma gamma counter to 10% or better accuracy.

Immunoblot detection of cross-reactive proteins. Human serum was incubated overnight at 4°C with extracellular proteins of *S. mutans*, *S. sanguis*, *S. mitis*, or *S. salivarius* at concentrations of approximately 10 $\mu\text{g}/\text{ml}$. The antibody-antigen mixtures then were centrifuged at $12,000 \times g$ in an Eppendorf microcentrifuge (Brinkmann Instruments, Inc., Westbury, N.Y.) for 5 min to remove immune complexes and any other insoluble material. These preadsorbed sera then were used to provide the first antibodies in immunoblot experiments as described above.

RESULTS

Identification of immunogenic *S. mutans* extracellular proteins. *S. mutans* LM7 (Bratthall serotype e) and V403 (serotype c) cellular and extracellular proteins were resolved on SDS-polyacrylamide gels. Figure 1 shows the resulting protein profiles visualized by Coomassie blue staining. Several proteins in both fractions had apparent molecular masses of greater than 100 kilodaltons. This size is in the range reported for glucosyltransferases from several *S. mutans* serotypes (3).

Extracellular proteins from *S. mutans* LM7 (Fig. 1, lane B) were used to immunize rabbits in an attempt to determine which of these antigens could elicit an antibody response. Immune serum from these rabbits was tested via immunoblotting (27). *S. mutans* LM7 extracellular proteins were subjected to SDS-PAGE and transferred by Western blotting (28) to nitrocellulose paper. The nitrocellulose paper then was immunoblotted with hyperimmune rabbit serum as the first antibody and goat anti-rabbit antibody coupled to horseradish peroxidase as the second antibody. The resulting immunoreactive antigens are displayed in Fig. 2. Owing to the sensitivity of the immunological detection system, more bands became visible than by Coomassie blue staining of the proteins. Lane A contains extracellular proteins from LM7, and approximately 25 immunoreactive bands could be detected. These ranged from about 24 to 320 kilodaltons. Lane B contains extracellular proteins from V403, and approxi-

mately 13 immunoreactive bands appeared, ranging from about 56 to 320 kilodaltons. The apparent molecular masses of the major immunoreactive proteins as determined by this method are listed under Fig. 2. Thus, several extracellular proteins of *S. mutans* appear to have the capability to function as immunogens. No immunoreactive proteins were detected with preimmune rabbit serum (data not shown).

Human serum antibody response against *S. mutans* antigens. We next were interested in the number and identity of *S. mutans* antigens to which an antibody response has been mounted in a human adult population. Human serum samples were obtained from 10 adult subjects, including 1 individual who was caries free. The 10 serum samples were screened for antibodies against *S. mutans* LM7 and V403 cellular and extracellular antigens. The *S. mutans* proteins were run on SDS-polyacrylamide gels, immobilized on nitrocellulose paper via Western transfer, and immunoblotted with serum from each of the 10 subjects. Equal dilutions of serum were used in each experiment. Figure 3 illustrates the results for six of the adult subjects. Two to 5 cellular immunoreactive polypeptides were visible in these individuals, while 5 to 17 extracellular polypeptides were recognized by serum antibodies. At least three common immunoreactive polypeptides were present among all 10 adults and for both strains. These included two cellular polypeptides of approximately 59 and 61 kilodaltons (Fig. 3, asterisks) and one extracellular polypeptide of approximately 57 kilodaltons (Fig. 3, arrow). There also appeared to be differences in immunoreactive polypeptides of higher molecular mass (>100 kilodaltons). No obvious major differences in immunoreactivity were observed between the caries-free individual (Fig. 3, panel 3) and the other nine adult subjects except in the higher-molecular-mass range.

Specificity of antigen: competition experiments. The cellular and extracellular antigens of *S. mutans* LM7 and V403 were examined to determine if there were any common immunodeterminants among these proteins. This was done by a competition experiment (Fig. 4) by which the indicated target antigen, either cellular or extracellular LM7 protein was allowed to coat wells of a microtiter plate. Each of the two potential competing antigens against either cellular or extracellular LM7 protein was mixed with equivalent amounts of human serum from a subject picked at random. Formation of antibody-antigen complexes should effectively reduce antibody available for interaction with the immobilized target antigens. LM7 cellular antigens successfully competed with immobilized LM7 cellular antigens, while LM7 extracellular antigens were unable to exhibit a comparable effect against cellular antigens (Fig. 4). In the reverse situation, in which the LM7 target antigens were extracellular, no competition was observed from LM7 cellular antigens. These data indicated that there was little cross-reactivity between the cellular and extracellular antigens of *S. mutans* LM7. Similar results were obtained with *S. mutans* V403 (data not shown).

Cross-reactivity of bacterial antigens. The immunoreactive proteins recognized by the human sera may not have been unique to *S. mutans* but might have represented immunodeterminants present in other streptococcal species. To investigate this possibility, we obtained extracellular preparations of three other oral streptococci, *S. sanguis*, *S. salivarius*, and *S. mitis*, as well as *S. faecalis*. Each of these protein preparations was incubated at various concentrations with human serum overnight. The absorbed sera were then added to the target antigens, *S. mutans* LM7 extracellular proteins, and serum antibody binding was determined

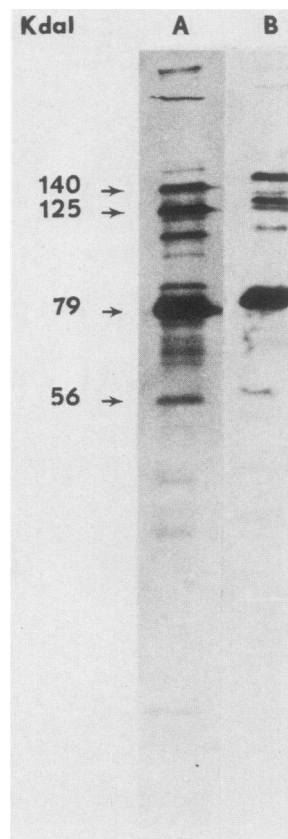


FIG. 2. Immunoreactive *S. mutans* extracellular proteins as detected by hyperimmune rabbit serum. Immunoblots of *S. mutans* LM7 extracellular proteins (lane A) and *S. mutans* V403 extracellular proteins (lane B). Each represents about 30 μ g of total protein. Proteins were subjected to SDS-PAGE with a 10% acrylamide slab gel followed by electrophoretic transfer to nitrocellulose paper. The paper was reacted with serum from a rabbit immunized with an *S. mutans* LM7 extracellular antigen preparation. Goat anti-rabbit antibody coupled to horseradish peroxidase was then added, followed by immersion in color development solution to visualize immunoreactive bands. Major bands for LM7 were 56, 79, 86, 125, 140, and 323 kilodaltons; for V403 they were 58, 82, 133, and 154 kilodaltons.

with I^{125} -labeled goat anti-human antibody. Binding of human serum antibodies to *S. mutans* LM7 extracellular antigens was affected in three ways (Fig. 5). First, there was little or no inhibition of binding, with *S. faecalis* protein (except at the high dose range) as an example. Second, there was partial inhibition of binding when *S. mitis* antigens were used in preincubation. Finally, almost total inhibition of binding could be achieved by using *S. mutans* extracellular proteins in preincubation.

The immunoblots (Fig. 6) further illustrate the cross-reactivity of certain antigens among the oral streptococci. Incubation of human serum with either *S. mutans* or *S. sanguis* extracellular proteins (lanes E and B, respectively) greatly reduced the antibody available to bind to immobilized *S. mutans* LM7 extracellular proteins. Only two immunoreactive bands remained after inoculation with *S. sanguis*; no bands remained when *S. mutans* was used. *S. salivarius* seemed to share the fewest immunodeterminants with *S. mutans* LM7, since antibody still remained available to bind to most of the *S. mutans* extracellular proteins (lane

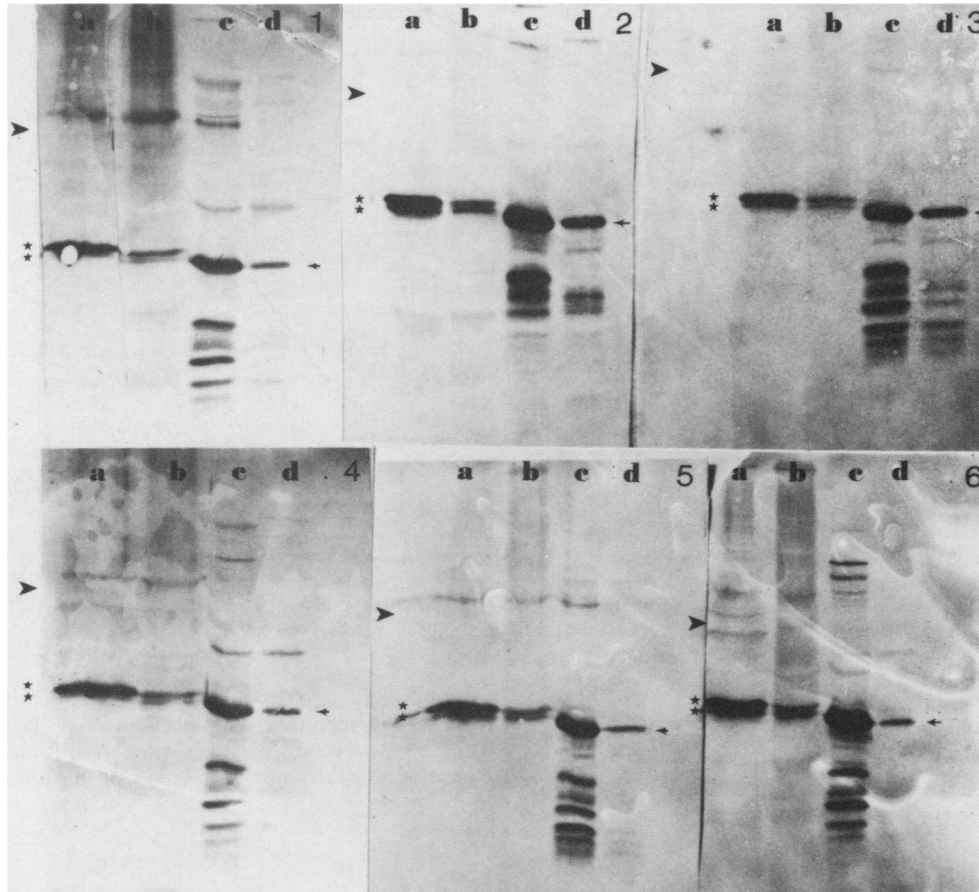


FIG. 3. Adult human serum antibody against *S. mutans* antigens. Panels represent immunoblots of adult subjects 1 to 6. Lanes: a, *S. mutans* LM7 cellular proteins; b, *S. mutans* V403 cellular proteins; c, *S. mutans* LM7 extracellular proteins; d, *S. mutans* V403 extracellular proteins. Asterisks indicate 61,000- and 59,000-dalton common intracellular proteins. Small arrows indicate common 57,000-dalton extracellular protein. Large arrowheads indicate 100,000-dalton molecular mass points. Panel 3 represents a caries-free individual. Intracellular protein lanes represent about 200 μ g of total protein, while extracellular protein lanes represent about 30 μ g of total protein.

D). Only three or four bands disappeared in the immunoblot profile. Finally, *S. mitis* appears to share some common immunodeterminants, since antibody remained available to bind to several (five or six) of the *S. mutans* LM7 proteins after preincubation with *S. mitis* extracellular proteins (lane

C). This result agrees with the partial inhibition shown by *S. mitis* in Fig. 5.

Serum antibody response against *S. mutans* antigens in young children. Serum was obtained from five young children aged 8, 10, 10, 24, and 26 months and examined for

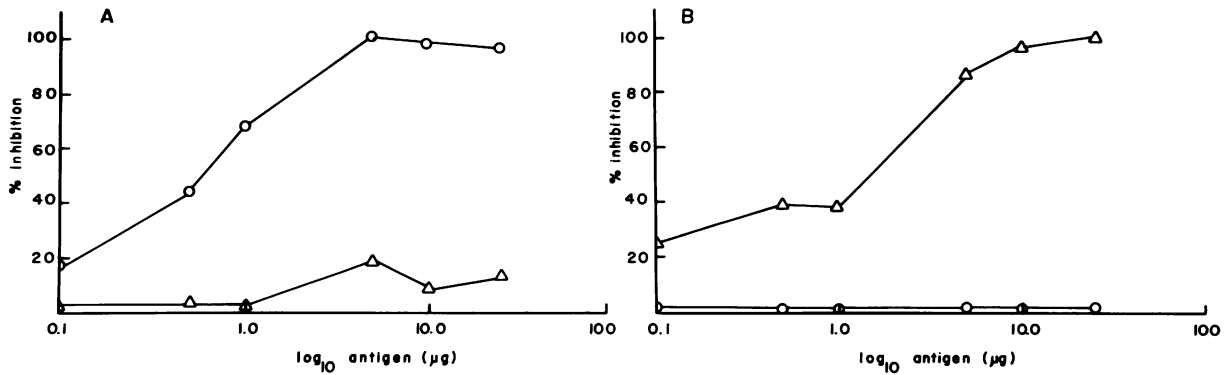


FIG. 4. Cellular versus extracellular competition assay. (A) *S. mutans* extracellular antigens were used as target antigens to coat microtiter plate wells. Each of the competing antigens was incubated with equivalent amounts of human serum and added to the coated wells. ¹²⁵I-labeled anti-human IgG then was added, bound radioactivity was determined, and percent inhibition was calculated. Competing antigens: ○, *S. mutans* LM7 extracellular; △, *S. mutans* LM7 cellular. (B) *S. mutans* LM7 cellular antigens were used as target antigens. Competing antigens: ○, *S. mutans* LM7 extracellular; △, *S. mutans* LM7 cellular.

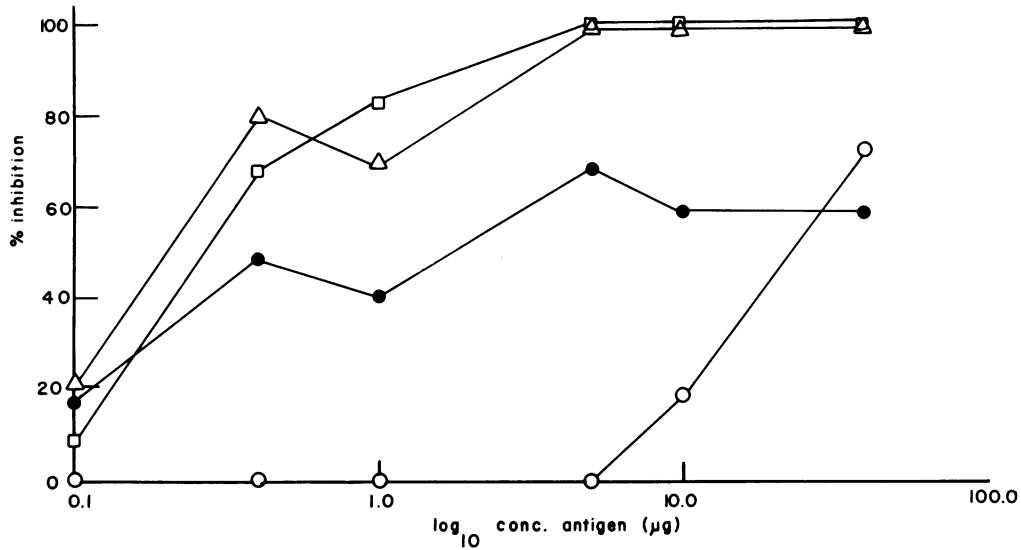


FIG. 5. Species specificity competition assay. *S. mutans* extracellular antigens were used as target antigens to coat microtiter wells. Each of the competing antigens was incubated with equivalent amounts of human serum and added to the coated wells. ¹²⁵I-labeled antihuman IgG then was added, bound radioactivity was determined, and percent inhibition was calculated. Competing antigens: □, *S. mutans* LM7 extracellular; △, *S. mutans* V403 extracellular; ●, *S. mitis* extracellular; ○, *S. faecalis* extracellular.

antibodies reactive with *S. mutans* LM7 extracellular antigens. The resulting immunoblots show differing responses among the five individuals. The 8-month-old child possessed antibodies reactive with only five *S. mutans* antigens, includ-

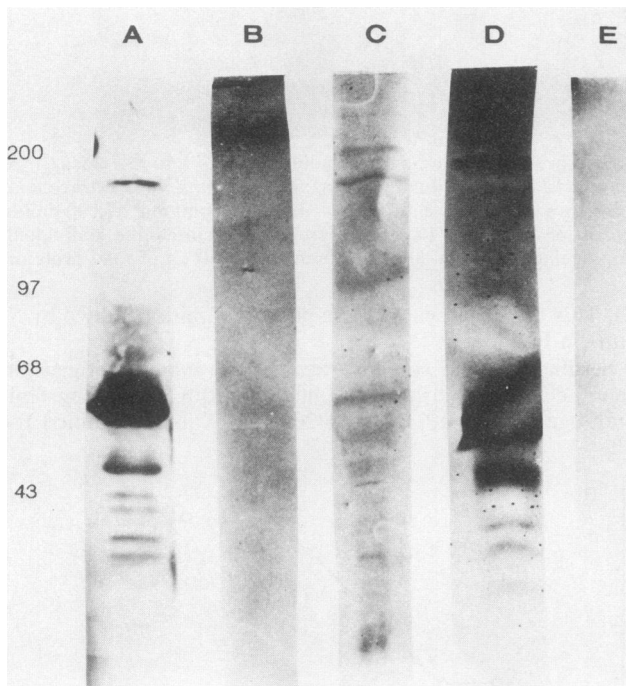


FIG. 6. Species specificity of antibodies to *S. mutans* LM7 extracellular proteins. Immunoblots of *S. mutans* LM7 extracellular proteins. Proteins were subjected to SDS-PAGE with a 10% acrylamide slab gel followed by electrophoretic transfer to nitrocellulose paper. Human serum was incubated with the following extracellular protein preparations at 10 µg/ml before incubation with the nitrocellulose paper followed by addition of goat anti-rabbit antibody coupled to horseradish peroxidase and immersion in color development solution for immunoreactive band visualization. Lanes: A, control; B, *S. sanguis*; C, *S. mitis*; D, *S. salivarius*; E, *S. mutans* LM7. Numbers at the left indicate molecular mass markers in kilodaltons. Each lane represents about 60 µg of total protein.

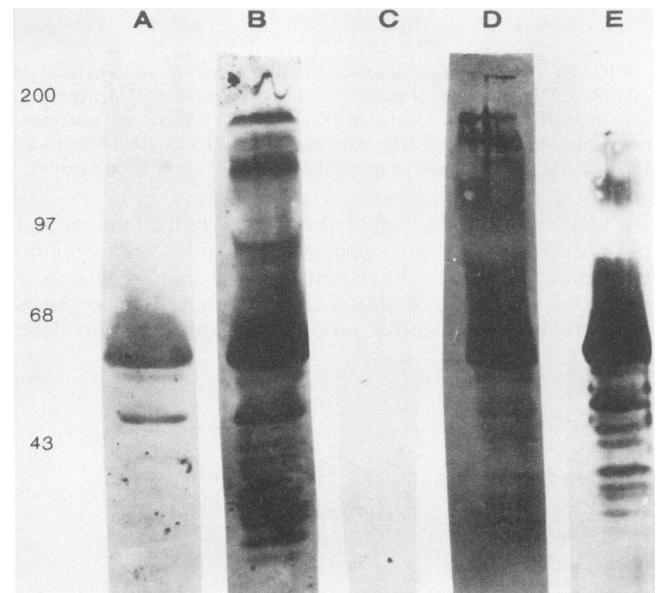


FIG. 7. Serum antibody response against *S. mutans* extracellular antigens in young children. Immunoblot of *S. mutans* LM7 extracellular proteins. Proteins were subjected to SDS-PAGE with a 10% acrylamide slab gel followed by electrophoretic transfer to nitrocellulose paper. Serum from children of the following ages were incubated with the nitrocellulose paper followed by addition of goat anti-rabbit antibody coupled to horseradish peroxidase and immersion in color development solution for immunoreactive band visualization. Lanes: A, 8 months; B, 10 months; C, 10 months; D, 24 months; E, 26 months. Numbers at the left indicate molecular mass markers in kilodaltons. Each lane represents about 60 µg of total protein.

ing the major 57-kilodalton extracellular protein (Fig. 7, lane A). One 10-month-old displayed antibodies reactive with at least 16 *S. mutans* antigens (lane B), while another 10-month-old appeared to have no detectable antibodies reactive with these antigens. The 24- and 26-month-old children (lanes D and E) also possessed antibodies reactive with many *S. mutans* extracellular antigens. All except the 10-month-old (lane C) had antibodies against antigens of greater than 100,000 daltons molecular mass.

DISCUSSION

The work described here indicates that there are a variety of *S. mutans* antigens to which serum antibodies are produced in humans. The humoral immune system is probably exposed to *S. mutans* antigens through minor cuts and abrasions in gingival tissue which can occur during dental procedures and probably during routine brushing and cleaning of teeth. At least three antigens appeared to be common in each of the 10 adult subjects in this study. These included cellular antigens of 59,000 and 61,000 daltons and an extracellular antigen of about 57,000 daltons. The cellular antigens are in the size range of the natural antigen recently reported (Russell et al., in press) as a wall protein which cross-reacts with other oral bacteria besides *S. mutans*. Although the predominant antibodies were directed against similar-molecular-mass antigens below 100,000 daltons in each of the adult serum samples examined, differences appeared in responses to antigens greater than 100,000 daltons in molecular mass. This latter observation may have significance in caries development, since most of the glucosyltransferases studied thus far have molecular masses above 100,000 daltons (3), and it has been demonstrated in animals that antibodies against glucosyltransferases can confer protection against the development of dental caries. The caries-free adult subject showed no obvious differences in the immunoblot profiles except in the area above 100,000 kilodaltons molecular mass, where individuals appear to display immunoreactivity against a variety of polypeptides (Fig. 3).

There seem to be immunologically distinct antibodies against extracellular and cellular antigens of *S. mutans* in human serum, as competition experiments indicated (Fig. 4). If shared immunodeterminants were present and equally accessible, serum antibodies would be titrated out and unable to bind to the target antigens. This did not occur with either *S. mutans* LM7 or V403 when extracellular antigens were mixed with serum and then added to cellular target antigens or in the reverse situation, in which cellular antigens were mixed with serum and then added to extracellular target antigens.

The use of sera from rabbits which had been immunized with *S. mutans* LM7 extracellular proteins suggested the potential immunogenicity of many of these proteins. Figure 2 illustrates that there are at least 25 detectable immunoreactive polypeptides from LM7, ranging from approximately 24,000 to 320,000 daltons. *S. mutans* V403 had 13 detectable immunoreactive polypeptides when screened with antisera to LM7 extracellular antigens, which ranged from about 40,000 to 360,000 daltons. These presumably represent antigens cross-reactive with those of LM7. We believe that these data show that there are several proteins of *S. mutans* which can be potentially immunogenic and that at least a few seem to be strongly immunoreactive or cross *S. mutans* serotypes or both, at least in this rabbit system.

Figures 5 and 6 indicate that some of the antigens of *S. mutans* are similar immunologically to those of some other

oral streptococci. *S. salivarius* seems to share the fewest common determinants, with *S. sanguis* sharing the most immunodeterminants. *S. mitis* seems to lie somewhere between these two. These results were not surprising, since cross-reactive antigens have been reported among the oral streptococci (22). Figure 6 indicates that the least cross-reactivity lies in the high-molecular-mass region above 100,000 daltons. These data do not prove that these antigens are unique to *S. mutans*, since there are many other microorganisms to consider, but the number of antigens which do share determinants are probably not protective and can be ruled out as prime vaccine candidates.

Since caries occurs far less frequently in adults, it is possible that caries immunity is eventually acquired over a long time. The sera of five young children 8 to 26 months old were examined for antibodies against *S. mutans* extracellular antigens. The results indicated some similarities in the immunoblot profiles below about 60,000 daltons as early 10 months old. However, as in adults, differences in reactivity to the high-molecular-mass antigens were seen, and one child appeared to have few, if any, antibodies to *S. mutans* extracellular proteins. It is interesting that antibodies reactive with *S. mutans* antigens are present as early as 8 months of age in some individuals, which is not long after initial tooth eruption and subsequent *S. mutans* colonization (13). Since almost all young children eventually acquire carious lesions, these early immunoreactive antigens are presumably not protective.

The human antibodies described in this paper are of the IgG class, since goat anti-human IgG antibody was used as the second antibody in the immunoblot assays. We have made no attempt to determine which antibody classes other than IgG are present in human serum against *S. mutans* antigens. We have also not looked at secretory IgA responses against specific *S. mutans* proteins. Some studies have demonstrated significant secretory IgA response against *S. mutans* (16, 17), and this may be a major immune response to this pathogen. However, other work has suggested that serum IgG antibodies can move into saliva via crevicular fluid and provide protection (1, 2, 14).

We believe that the work described here can have implications for development of vaccine against this organism in humans. First, it is evident that humans develop antibodies against many *S. mutans* proteins from an early age and that these antibodies do not seem to effect immunity, since more than 99% of the population eventually develop caries. Therefore, any of these proteins probably would not be vaccine candidates. Also, many of these *S. mutans* proteins cross-react immunologically with proteins of other oral streptococci. These proteins also would not make good vaccine candidates, since they are shared by other normal oral flora. We suggest using pools of adult human sera absorbed with a mixture of proteins from other oral streptococci when searching for immunogenic *S. mutans* proteins. Antigens detected by these serum pools then should be checked for reactivity with a pool of sera from young children. Antigens which react with the pooled adult sera but not with the pooled child sera should be further studied. Finally, there appeared to be several *S. mutans* extracellular proteins to which antibody was produced in the immunized rabbit but not in the human subjects. This many indicate that some *S. mutans* proteins are poor immunogens under normal circumstances but can be good immunogens if appropriate doses are used during immunization. Some of these are high-molecular-mass proteins over 100,000 in molecular mass.

We have begun to clone immunoreactive proteins of *S.*

mutans LM7 which are reactive to either human serum or hyperimmune rabbit serum. This is presently being done with a genomic library consisting of *Escherichia coli* cells containing the plasmid pOP203 (A₂⁺) with *S. mutans* chromosomal DNA inserts (20). We are also screening bacteriophage lambda libraries with each type of serum. The cloned immunoreactive proteins will be further examined individually as potential immunogens for vaccines against *S. mutans*. Since *S. mutans* antigen(s) appears to be cross-reactive with human heart tissue (4, 10), each of the cloned proteins can be screened for this property also. This approach may also aid in identifying proteins which have thus far not been cloned successfully from this organism (i.e., some glucosyltransferases). Such molecular genetic approaches should eventually allow the production of a safe and efficacious vaccine against dental caries.

ACKNOWLEDGMENTS

We thank D. LeBlanc and D. Clewell for providing bacterial strains used in this work. We acknowledge the excellent technical assistance of D. Marshall and M. Cline. Finally, we thank V. Goodall for assistance in the preparation of the manuscript.

This work was supported by Public Health Service grant DE 04224 from the National Institute for Dental Research. M.J.P. was the recipient of National Research Service award DE 05371 from the National Institute of Dental Research.

LITERATURE CITED

- Challacombe, S. J. 1980. Serum and salivary antibodies to *Streptococcus mutans* in relation to the development and treatment of human dental caries. *Arch. Oral Biol.* **25**:495-502.
- Challacombe, S. J., M. W. Russell, J. E. Hawkes, L. A. Bergmeier, and T. Lehner. 1978. Passage of immunoglobulins from plasma to the oral cavity in rhesus monkeys. *Immunology* **35**:923-931.
- Ciardi, J. E. 1983. Purification and properties of glucosyltransferases from *Streptococcus mutans*: a review, p. 51-64. In R. J. Doyle and J. E. Ciardi (ed.), *Proceedings on glucosyltransferases, glucans, sucrose, and dental caries* (Special supplement to *Chemical Senses*).
- Ferretti, J. J., C. Shea, and M. W. Humphrey. 1980. Cross-reactivity of *Streptococcus mutans* antigens and human heart tissue. *Infect. Immun.* **30**:69-73.
- Fitzgerald, R. J., and P. H. Keyes. 1960. Demonstration of the etiological role of streptococci in experimental caries in the hamsters. *J. Am. Dent. Assoc.* **61**:9-19.
- Gibbons, R. J., and J. van Houte. 1975. Dental caries. *Annu. Rev. Med.* **26**:121-136.
- Gregory, R. L., S. M. Michalek, S. J. Filler, J. Mestecky, and J. R. McGhee. 1985. Prevention of *Streptococcus mutans* colonization by salivary IgA antibodies. *J. Clin. Immunol.* **5**:55-62.
- Hamada, S., and H. D. Slade. 1980. Biology, immunology, and cariogenicity of *Streptococcus mutans*. *Microbiol. Rev.* **44**:331-384.
- Hartley, D. L., K. R. Jones, J. A. Tobian, D. J. LeBlanc, and F. L. Macrina. 1984. Disseminated tetracycline resistance in oral streptococci: implication of a conjugative transposon. *Infect. Immun.* **45**:13-17.
- Hughes, M., S. M. Machardy, A. J. Sheppard, and N. C. Woods. 1980. Evidence for an immunological relationship between *Streptococcus mutans* and human cardiac tissue. *Infect. Immun.* **27**:576-588.
- Krasse, B. 1965. Human streptococci and experimental caries in hamsters. *Arch. Oral Biol.* **11**:429-436.
- Laemmli, U. K., and M. Favre. 1973. Maturation of the head of bacteriophage T4. I. DNA packaging events. *J. Mol. Biol.* **80**:575-599.
- Lehner, T., J. J. Murray, G. B. Winter, and J. Caldwell. 1978. Antibodies to *Streptococcus mutans* and immunoglobulin levels in children with dental caries. *Arch. Oral Biol.* **23**:1061-1067.
- Lehner, T., M. W. Russell, J. Caldwell, and R. Smith. 1981. Immunization with purified protein antigens from *Streptococcus mutans* against dental caries in rhesus monkeys. *Infect. Immun.* **34**:407-415.
- Lowry, O. H., N. J. Rosebrough, A. C. Farr, and R. J. Randall. 1951. Protein measurement with the Folin phenol reagent. *J. Biol. Chem.* **193**:265-275.
- McGhee, J. R., J. Mestecky, R. R. Arnold, S. M. Michalek, S. J. Prine, and J. L. Babb. 1978. Induction of secretory antibodies in humans following ingestion of *Streptococcus mutans*. *Adv. Exp. Med. Biol.* **107**:261-269.
- McGhee, J. R., and S. M. Michalek. 1981. Immunobiology of dental caries: microbial aspects and local immunity. *Annu. Rev. Microbiol.* **35**:595-639.
- Michalek, S. M., J. R. McGhee, R. R. Arnold, and J. Mestecky. 1978. Effective immunity to dental caries: selective induction of secretory immunity by oral administration of *Streptococcus mutans* in rodents. *Adv. Exp. Med. Biol.* **107**:261-269.
- Michalek, S. M., I. Morisaki, C. C. Harmon, S. Hamada, and J. R. McGhee. 1983. Effective immunity to dental caries: gastric intubation of *Streptococcus mutans* whole cells or cell walls induces protective immunity in gnotobiotic rats. *Infect. Immun.* **39**:645-654.
- Pucci, M. J., and F. L. Macrina. 1985. Cloned *gtfA* gene of *Streptococcus mutans* LM7 alters glucan synthesis in *Streptococcus sanguis*. *Infect. Immun.* **48**:704-712.
- Russell, M. W., S. J. Challacombe, and T. Lehner. 1980. Specificity of antibodies induced by *Streptococcus mutans* during immunization against dental caries. *Immunology* **40**:97-106.
- Schöller, M., J. P. Klein, P. Sommer, and R. Frank. 1983. Common antigens of streptococcal and nonstreptococcal oral bacteria: characterization of wall-associated protein and comparison with extracellular protein antigen. *Infect. Immun.* **40**:1186-1191.
- Smith, D. J., M. A. Taubman, and J. L. Ebersole. 1979. Effect of oral administration of glucosyltransferase antigens on experimental dental caries. *Infect. Immun.* **26**:82-89.
- Taubman, M. A., and D. J. Smith. 1977. Effects of local immunization with glucosyltransferase fractions from *Streptococcus mutans* on dental caries in rats and hamsters. *J. Immunol.* **118**:710-720.
- Terleckyj, B., N. P. Willett, and G. D. Shockman. 1975. Growth of several cariogenic strains of oral streptococci in chemically defined medium. *Infect. Immun.* **11**:649-655.
- Tew, J. G., D. R. Marshall, W. E. C. Moore, A. M. Best, K. G. Palcanis, and R. R. Ranney. 1985. Serum antibody reactive with predominant organisms in the subgingival flora of young adults with generalized severe periodontitis. *Infect. Immun.* **48**:303-311.
- Towbin, H., and J. Gordon. 1984. Immunoblotting and dot immunobinding—current status and outlook. *J. Immunol. Methods* **72**:313-340.
- Towbin, H., T. Stachelin, and J. Gordon. 1979. Electrophoretic transfer of proteins from polyacrylamide gels to nitrocellulose sheets: procedure and some applications. *Proc. Natl. Acad. Sci. USA* **76**:4350-4354.