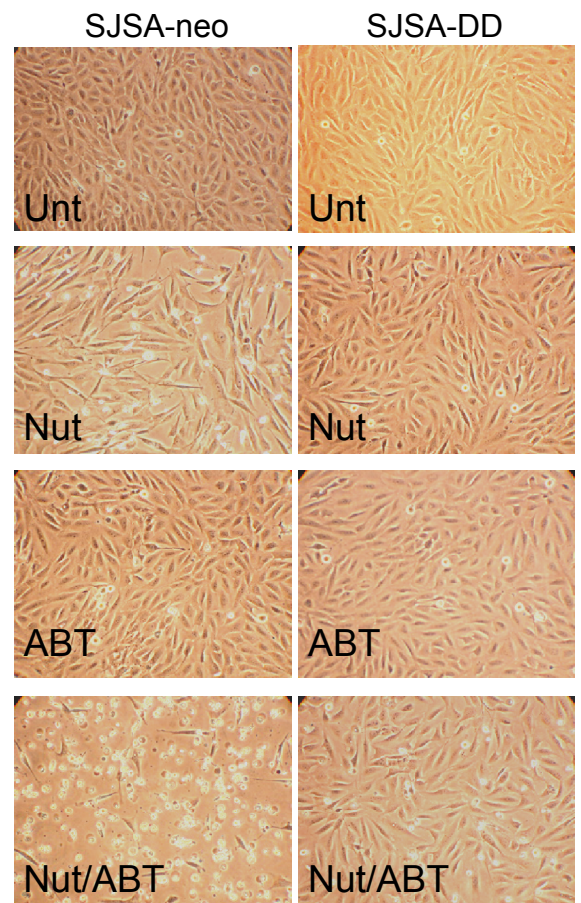
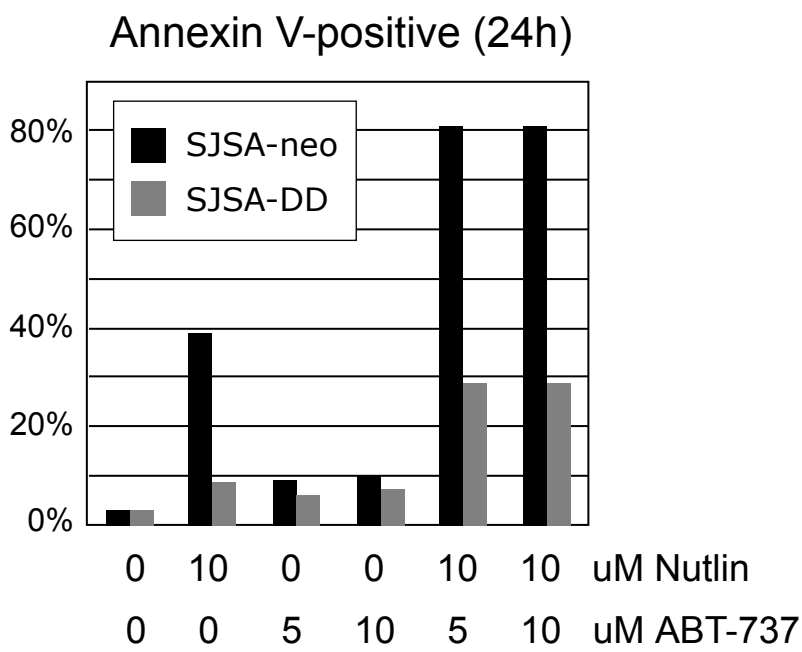
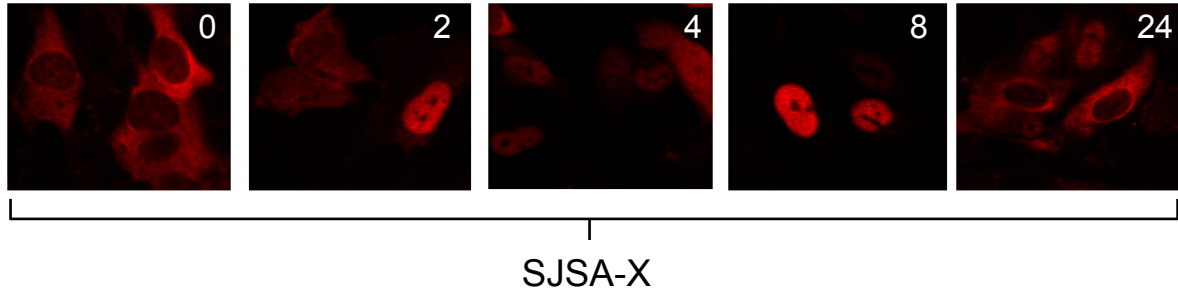


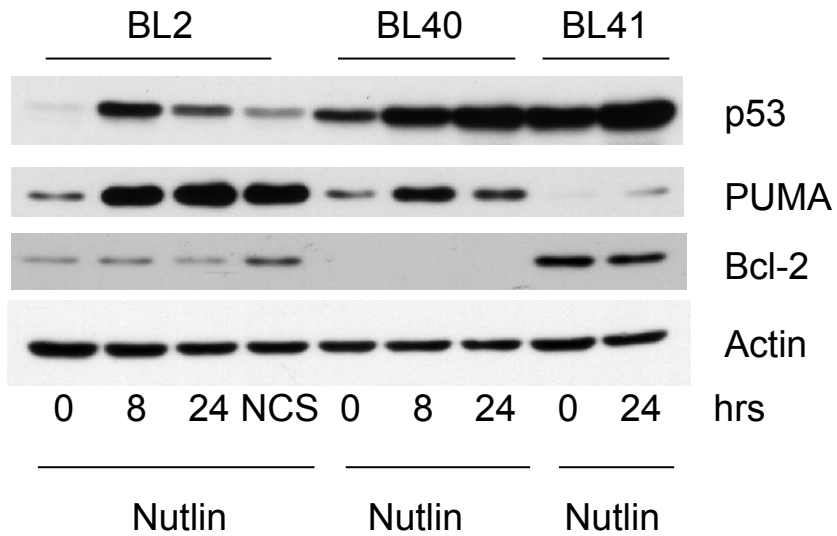
Wade et al  
Supplementary Figure 1 Caspase 3 expression in BL cells



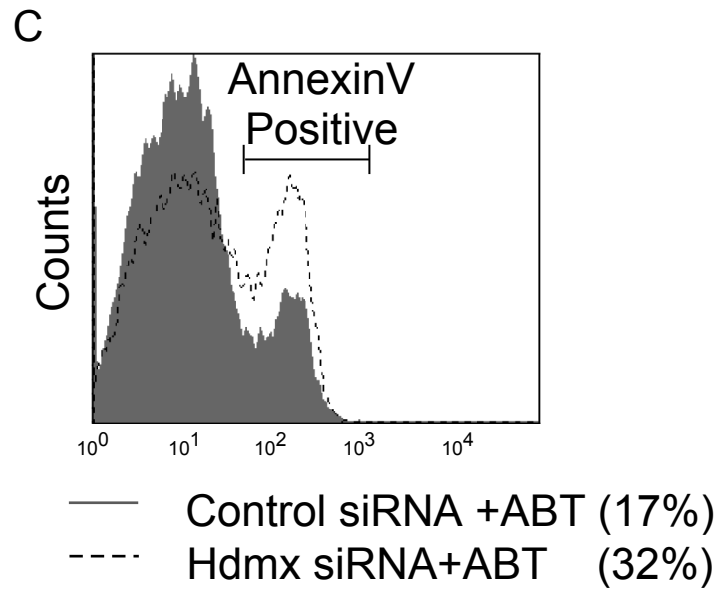
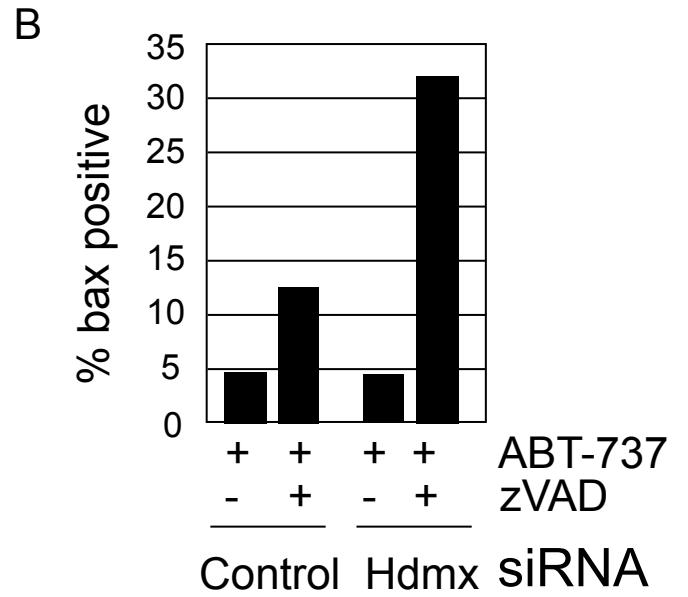
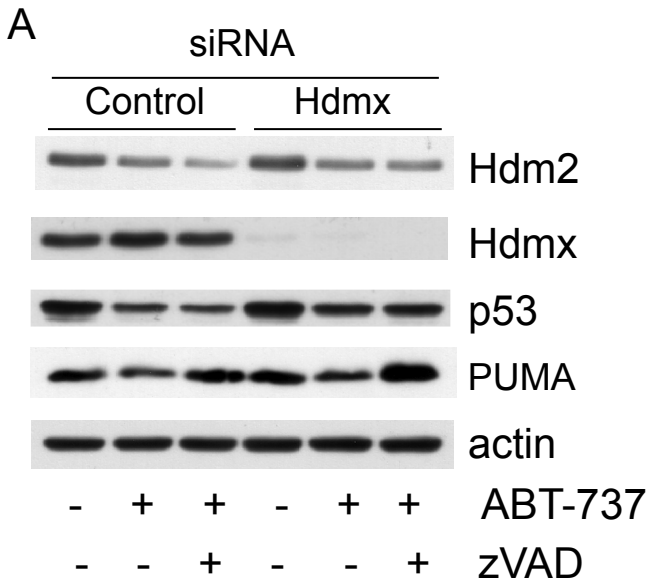
Wade et al  
Supplementary Figure 2 p53 dependence of Nutlin/ABT co-operation



Wade et al  
 Supplementary Figure 3 Nuclear translocation of Hdmx in SJSA cells



Wade et al  
 Supplementary Figure 4 Molecular Profiling of BL cells following Nutlin treatment



**Supplementary Table 1: Sequences of primers used in qRT-PCR**

<b>Gene Name</b>	<b>Sequence for Forward</b>	<b>Sequence for Reverse</b>
FDXR	GTACAACGGGCTTCCTGAGAAC	CCCCAGAATCACGGCTGT
PIG3	AAATTCACCAAAGGTGCTGGAGT	TCCGCCTATGCAGTCTAGAATAAGA
P53DINP1	AATGAGAAAGAAGATGATGAATGGATT	TGCTGAGAAACCAGTGCAAGTATC
DR5	TGTCGCCGCGGTCCT	TGGGTGATCAGAGCAGACTCAG
FAS	GGGCATCTGGACCCTCCTAC	GATAATCTAGCAACAGACGTAAGAACCA
GADD45A	ATTCTCGGCTGGAGAGCAGA	GCATCCCCCACCTTATCCAT
PUMA (BBC3)	ACGACCTCAACGCACAGTACG	TCCCATGATGAGATTGTACAGGAC
P21 (CDK1N1A)	CTGGAGACTCTCAGGGTTCGAAA	GATTAGGGCTTCCTCTTGGAGAA
MDM2	GGCGATTGGAGGGTAGACCT	CACATTTGCCTGGATCAGCA

**Supplementary Table 2: Quantification of G1 and G2/M phases of cell cycle from FACS profiles in Fig.6**

<b>WS1</b>	<b>G1</b>	<b>G2/M</b>
<b>Unt</b>	78%	15%
<b>Nut</b>	64%	23%
<b>ABT 1</b>	75%	13%
<b>ABT 10</b>	74%	11%
<b>Nut/ABT 1</b>	63%	24%
<b>Nut/ABT 10</b>	63%	22%
<b>MCF7</b>	<b>G1</b>	<b>G2/M</b>
<b>Unt</b>	62%	23%
<b>Nut</b>	70%	14%
<b>ABT 1</b>	62%	22%
<b>ABT 10</b>	67%	10%
<b>Nut/ABT 1</b>	61%	10%
<b>Nut/ABT 10</b>	38%	7%